

## **Isle of Wight Council**

# **Education and Inclusion Service**

**Policy for access to education for school age children and young people  
with medical needs**

**'Every child should have the best possible start in life through a high-quality education, which allows them to achieve their full potential. A child who has health needs should have the same opportunities as their peer group, including a broad and balanced curriculum' DFE 2014**

**Published: August 2020**

## Contents

<b>1 Introduction.....</b>	<b>3</b>
<b>2 Premise.....</b>	<b>3</b>
<b>3 Responsibility, Legislation and Guidance .....</b>	<b>4</b>
<b>4 Identification .....</b>	<b>5</b>
<b>5 Role of the Isle of Wight Local Authority .....</b>	<b>6</b>
<b>6 Funding and other school responsibilities .....</b>	<b>6</b>
<b>7 Identification of children who need provision .....</b>	<b>6</b>
<b>8 Intervention: Persistent or long-term illness affecting ability to engage in education .....</b>	<b>8</b>
<b>9 Recovery, Reintegration and Partnership Working .....</b>	<b>8</b>
<b>10 Complaints and Review.....</b>	<b>9</b>

# 1 Introduction

- 1.1 This policy sets out how the Isle of Wight Council (IWC) will comply with its statutory duty to arrange suitable full-time (or part time when appropriate for the child's<sup>1</sup> needs) education for children of compulsory school age (5 – 16) who, because of illness, would otherwise not receive suitable education.
- 1.2 This statutory duty applies to all children of compulsory school age, permanently living on the Isle of Wight, who would normally attend mainstream schools or special schools, including academies, free schools and independent schools, or where a child is not on roll of a school.
- 1.3 This policy does not apply to children who are electively home educated. Where a young person is on roll of a post-16 institution, either a school or college it is their responsibility to ensure support for education.

# 2 Premise

- 2.1 IWC believe school is the best environment in which to educate a child; schools provide a broad and balanced curriculum alongside opportunities for social and emotional development.
- 2.2 IWC's intention is that all children, regardless of circumstances or education setting, should receive a good education to enable them to shape their own futures. Therefore, alternative provision for children medically unfit to attend school and the framework surrounding it should offer good quality education. This support should meet the child's individual needs, including social and emotional needs and enable them to thrive and prosper in the education system.
- 2.3 The provision for children who are medically unfit to attend school will ensure that:
  - Children make good progress in their education
  - Disruption to learning is minimised and there is a continuity of education provision within the school curriculum
  - Children are able to obtain qualifications as appropriate to their age and abilities

---

<sup>1</sup> **Note: Within this document any reference to child or children refers to a pupil of statutory school age**

- Children are able to reintegrate successfully back into school and that this takes place as soon as their health permits
  - Children feel fully part of their school community and are able to stay in contact with classmates
- 2.4 IWC is committed to providing a recovery-focused model that embraces inclusive principles with a clear focus on an appropriate and timely return to school-based learning.
- 2.5 Where the Island Learning Centre is accessed to meet need, the child's home school and the Education Centre should collaborate with parents/carers and all relevant health services to ensure the delivery of effective education for children with additional health needs.

### 3 Responsibility, Legislation and Guidance

- 3.1 The moral and legal mandate for schools is to ensure that they are supporting children with medical needs to the best of their ability and that each school has policies and processes in place to ensure this happens. There was a major shift in the legal responsibilities of schools when Section 100 of the Children and Families Act 2014 placed a legal duty on schools, academies and PRUs to make arrangements for supporting pupils with medical conditions at their school.
- 3.2 Sometimes children or young people become too unwell and are unable to attend school for a significant period of time. At these times the LA can in partnership with the school make suitable arrangements for that child's continuing education that takes into account their age, aptitude, ability and SEN needs and their health condition.
- 3.3 There is an expectation that schools will make reasonable adjustments to meet the need of the child if they are able to attend school with adjustments. There is an expectation that schools will be creative and flexible in meeting needs. It is, however, left to the school's discretion as to how they meet the needs. Schools will need to demonstrate how they are meeting educational need. This includes meeting the needs of children who can attend school part-time and intermittently, particularly when there are known medical needs, and these can be planned for. Pupils meeting the threshold of 15 days absence due to illness where reasonable adjustments are made will be reported to the Local Authority each half-term on the alternative provision spreadsheet.
- 3.4 There is an expectation that most children will make a full or partial recovery from their illness. At this point it is important that the children's needs for education continue to be appropriately met; most children will transition back to full time mainstream education.
- 3.5 Schools retain the responsibility to provide a suitable education for all its pupils and must be able to make reasonable adjustments according to identified needs. Occasionally a joint package of support may be arranged for the child between the school and IWC through commissioning the Island Learning Centre. The child will remain on the school roll (see 'Intervention' below).

- 3.6 Education Support for Medical Absence is part of the commissioning arrangements with the Island Learning Centre and aims to provide support for Isle of Wight residents of statutory school age who are temporarily unable to attend their school or programme of support due to the impact of their medical condition.
- 3.7 Education Support for Medical Absence is underpinned by the following Government documents:
- Children and Families Act, 2014, section 100
  - Education Act 1996 (Section 19)
  - Equality Act 2010
  - Statutory Guidance for Local Authorities, January 2013
  - Out of School Out of Mind, 2011
  - Ofsted Subsidiary Guidance, 2012
  - Alternative Provision Statutory Guidance, January 2013
  - SEND Code of Practice, January 2015
  - Supporting pupils at school with medical conditions, December 2015

This policy has been developed with regard to the above guidance.

## 4 Identification

- 4.1 Most unwell children continue to have their need for education appropriately met by their own school. This support can be sensitively arranged between the school, the parents or primary carers, a primary health care provider (most often the GP) and the child themselves.
- 4.2 Before considering a referral to the local authority for advice and guidance a school must satisfy itself that a child's absence is due to ill-health and that there are no other factors influencing non-attendance.
- 4.3 Schools should consider liaison with other agencies that may be in contact with the child and/or their family. This could, for example, be children's social care, CAMHS, school nursing service or the G.P.
- 4.4 When ill health persists beyond 15 consecutive or non-consecutive school days the school should, where reasonable adjustment can be made, ensure they notify the LA through the Alternative Provision / Reduced hours spreadsheet (submitted to the LA on a half-termly basis).
- 4.5 If reasonable adjustments are not achievable / sufficient to meet a child's educational needs then advice and guidance should be sought from the LA Officer responsible for medical absence and where appropriate a referral completed for LA support.

## 5 Role of the Isle of Wight Local Authority

- 5.1 Local authorities are responsible for ensuring that there is a named senior officer with responsibility for education provision for children with health needs and parents should know who that person is. The named officer for IWC is Dave Harvey, Inclusion Support Service Manager, [dave.harvey@hants.gov.uk](mailto:dave.harvey@hants.gov.uk).
- 5.2 IWC's SEN Casework team will work with schools to review any changing needs of a child with an Education Health and Care Plan (EHCP), who is unable to attend school because of their medical needs. The EHCP will link the long-term educational needs associated with the child's medical condition to the most appropriate teaching and learning provision.
- 5.3 The LA Lead Officer for children with medical needs can provide advice on children receiving alternative education provision. This team works closely with colleagues within the local authority, schools and partner agencies to reduce the length of time that children are on reduced timetables, which may be due to their medical needs. This is monitored, and schools are held to account through internal systems.

## 6 Funding and other school responsibilities

- 6.1 Schools retain the Age Weighted Pupil Unit (AWPU) funding for children during the period of IWC commissioned supported provision and will be charged according to the agreed formula based on the daily AWPU rate for educational provision.
- 6.2 The home school will also be responsible for:
  - Driving the agreed action plan for the child and informing all relevant parties of any changes
  - Providing or loaning specialist resource materials, where possible (such materials to be itemised and returned to the school at the end of the period of ILC provision)
  - Making examination arrangements (e.g. GCSE, SATs, etc.)
  - Examination entry fees
  - Any offsite activity (if appropriate)
  - Schools should be consistently seeking an early return to school-based education
  - Learning in line with the premise set out earlier in this document.

## 7 Identification of children who need provision

- 7.1 All referrals, both primary and secondary, to IWC will be received via a single point of access – this being the LA Lead Officer. This ensures:
  - (a) that all referrals are treated in an equitable manner
  - (b) that effective monitoring can take place.

## 7.2 The triage system will take account of:

- Medical evidence, which should be verified in writing by a consultant paediatrician or specialist consultant psychiatrist from Child and Mental Health Adolescent Services (CAMHS); where this is not possible alternative enquiries should be made to G.P.'s and/or others. This should indicate:
  - That at the time of writing the child is not well enough to attend school
  - The impact the illness is having on education
  - The current plans and provision in place to support the child's education
  - The age and stage of the child e.g. KS1 – KS4
  - How the school has made every reasonable adjustment to include the child in education and whether there are any reasonable adjustments the school could make to enable the child to attend school
  - Any other available evidence
  
- Schools should authorise absences due to illness unless they have genuine concern about the veracity of an illness. Where this is the case the Headteacher should, where they have an SLA with the E&I service, discuss with their allocated officer or where there is no SLA contact the LA Lead Officer for bespoke advice.
  
- Where parents are unable to provide evidence, further enquiries should be made to the General Practitioner (GP) or other health professionals or agencies especially around mental health issues.

7.3 Whilst unable to attend their home school it is important that child continues to engage in education. The provision offered will take account of age, aptitude and ability alongside other individual characteristics such as social and emotional needs, special educational needs and any disability. It is recognised and accepted that the capacity of the individual child to engage in learning may change over time. It is important, therefore, to ensure that the provision is regularly reviewed and that it continues to be both flexible and sensitive to individual need. All provision will maintain a focus on returning the child to school-based learning as soon as is reasonably possible.

7.4 Following a referral resulting in LA intervention, the Island Learning Centre will be commissioned and the Headteacher will respond to the school to make suitable arrangements. If in-reach / outreach threshold is not met the LA responsible Officer will respond with advice and guidance which could include signposting to appropriate services or agencies, strategies for reintegration alongside advice for additional support or intervention.

7.5 The child's progress will be reviewed regularly, in consultation with the parent/carer, the home school and other relevant services. Reviews may be made more frequently according to need. It should be recognised that a child's educational needs and ability to access education may change depending on their health and that the programme may need to be flexible to accommodate this.

7.6 See Appendix 1 for a flow diagram overview.

## 8 Intervention: Persistent or long-term illness affecting ability to engage in education

- 8.1 The Headteacher of the Island Learning Centre *with* the child's home school will:
- Undertake a thorough evaluation of all the circumstances affecting the child's ability to engage in learning
  - Work closely with the family and all agencies/professionals working with the child and their family
  - Initiate a multi-agency Education Planning Meeting (EPM)
  - Develop an ongoing education support for medical absence programme including an Individual Health Care Plan (IHCP), see Appendix 3
  - Monitor and review the effectiveness of the programme
  - Ensure a timely return to school-based education

## 9 Recovery, Reintegration and Partnership Working

- 9.1 Many children recover and make a positive transition back into school. Depending on the age and stage of the child this may, however, not be the most appropriate course of action e.g. children in Y11 who are approaching the end of KS4. In this circumstance it is expected that they would be supported in their onward transition to education, employment or training by the community-based intervention services.
- 9.2 Parents and carers have a key role to play in their child's education and are to be involved in planning and on-going review. In the case of a looked after child, IWC and primary carers will fulfil this role. Children should also be involved in decisions to ensure they are engaged as much as possible in this process.
- 9.3 Relevant services including Special Educational Needs (SEN), Child and Adolescent Mental Health Services (CAMHS), Education and Inclusion Service, Hampshire Inspection and Advisory Service, educational psychologists, and school nurses all have responsibilities to work together to support children who are medically unfit to attend school
- 9.4 Schools and the Island Learning Centre will make arrangements to reintegrate child at the earliest opportunity and as soon as they are well enough. Each child should have an individually tailored reintegration plan. Under Equalities legislation, schools must consider whether they need to make any reasonable adjustments to provide suitable access for the child as part of their reintegration.
- 9.5 Plans for longer term outcomes and the next steps will be agreed at the start of the commissioned support, intervention or provision, according to the statutory guidance for Alternative Provision (2013);



<https://www.gov.uk/government/publications/education-for-children-with-health-needs-who-cannot-attend-school>

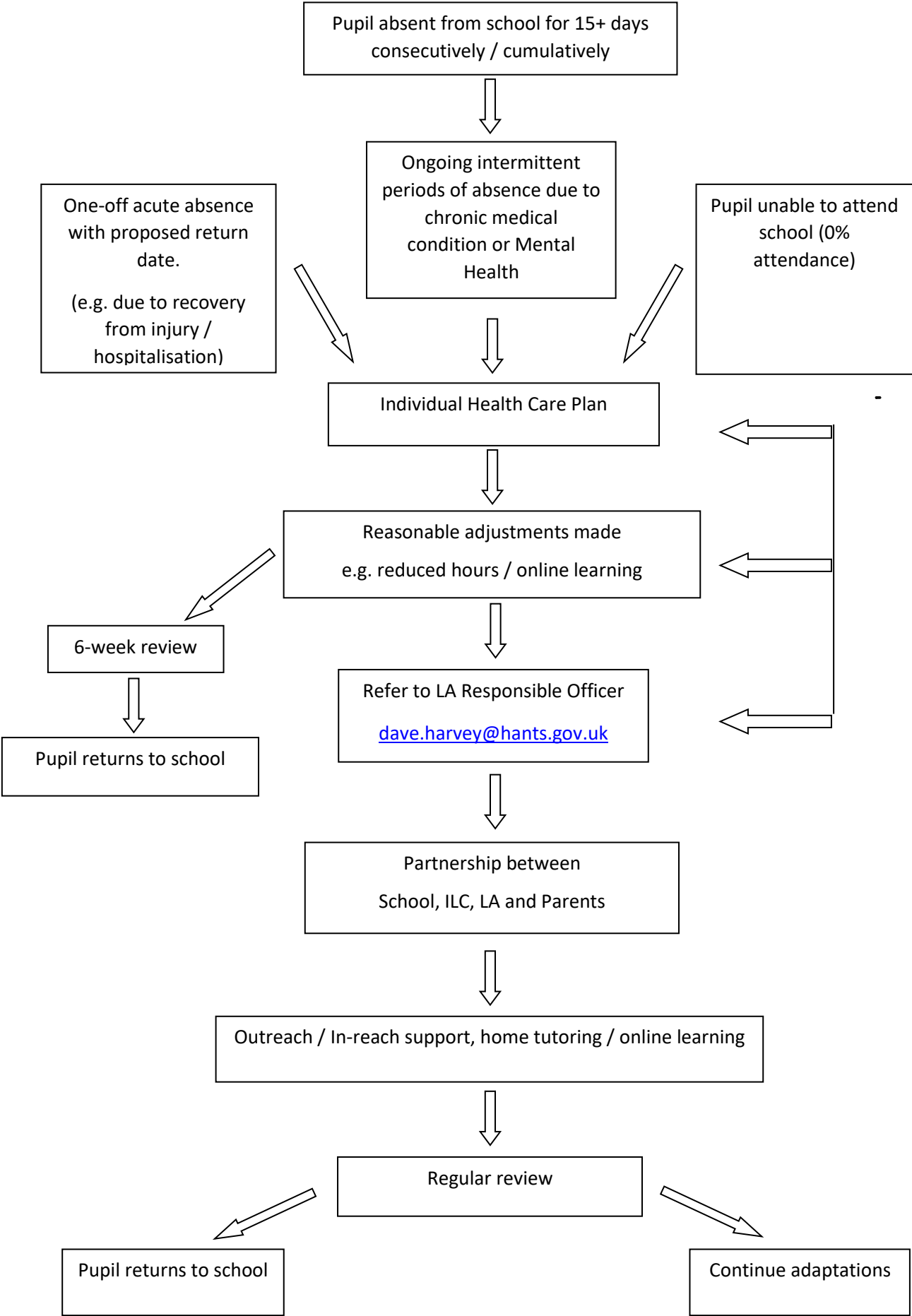
- 9.6 In all cases the children must have an Individual Health Care Plan (see Appendix 3) that can be reviewed and amended as appropriate.
- 9.7 Both the home school and the Island Learning Centre will support children to sit public examinations. Awarding bodies will make special arrangements for children with permanent or long-standing disabilities when they are taking public examinations.

## 10 Complaints and Review

- 10.1 Complaints about provision for children who are medically unfit to attend school should be made to the child's home school in the first instance. Complaints can be made using the corporate complaints procedures. The council will only intervene if it has reason to believe that the education provision is unsuitable or insufficient.

<https://www.iow.gov.uk/council/OtherServices/Childrens-Complaints/A-guide-to-Childrens-Services-Complaints>

- 10.2 This policy will be reviewed every two years or in line with any changes made to statutory guidelines



Individual Health Care Plan

Name of School	
Child's Name	
Date of Birth	
Child's address	
Medical diagnosis / condition	
Date of Plan	
Review Date	

**Family Contact Information**

Name	
Relationship to Child	
Phone no's	
Name	
Relationship to Child	
Phone no's	

**Clinic / Hospital Contact**

Name	
Phone Number	
Name	
Phone Number	

**GP Information**

Name	
Address	
Phone no	

Describe medical needs and give details of child's symptoms, triggers, signs, treatments, facilities, equipment or devices, environmental issues etc

Name of medication, dose, method of administration, when to be taken, side effects, contra-indications, administered by/self-administered with/without supervision

Daily care requirements

Specific support for the pupil's educational, social and emotional needs

Arrangements for school visits/trips etc

Other information

Describe what constitutes an emergency, and the action to take if this occurs

Who is responsible in an emergency (*state if different for off-site activities*)

Plan developed with

Staff training needed/undertaken – who, what, when

--

Form copied to:

--

**Signed:** .....

**Date:** .....