

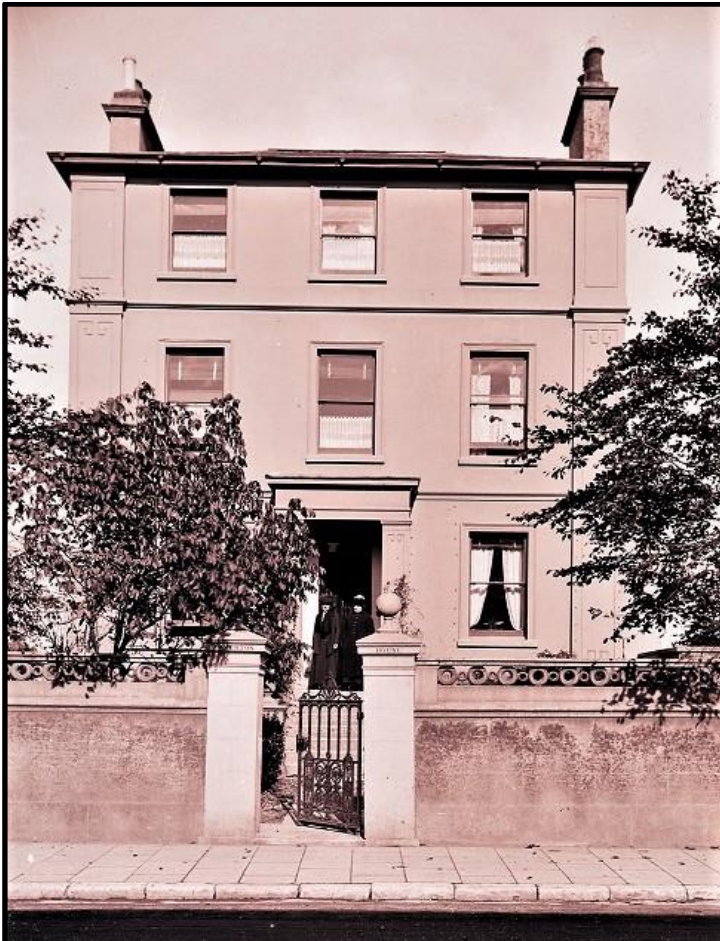
# Ryde Houses



IWCMS:2009.360

## Richmond House and Sandford House – The Strand

This building was constructed in the 1820s, it has three storeys and a basement. Photograph was taken Circa. 1920s.



IWCMS:2009.361

## Claverton House

Claverton House is situated on The Strand.

It is a three-storey building with a semi basement. A flight of steps leads up to the front entrance.

Today the building is self-catering apartments.

Circa. 1920s.



IWCMS:2009.367

The sitting room in an unidentified house. Possibly Sandringham House on The Strand. The two photographic portraits on the piano may be the residents. Circa. 1920s.



IWCMS:2009.356

### **3 Marine Terrace**

3 Marine Terrace is situated on Castle Street, Ryde.

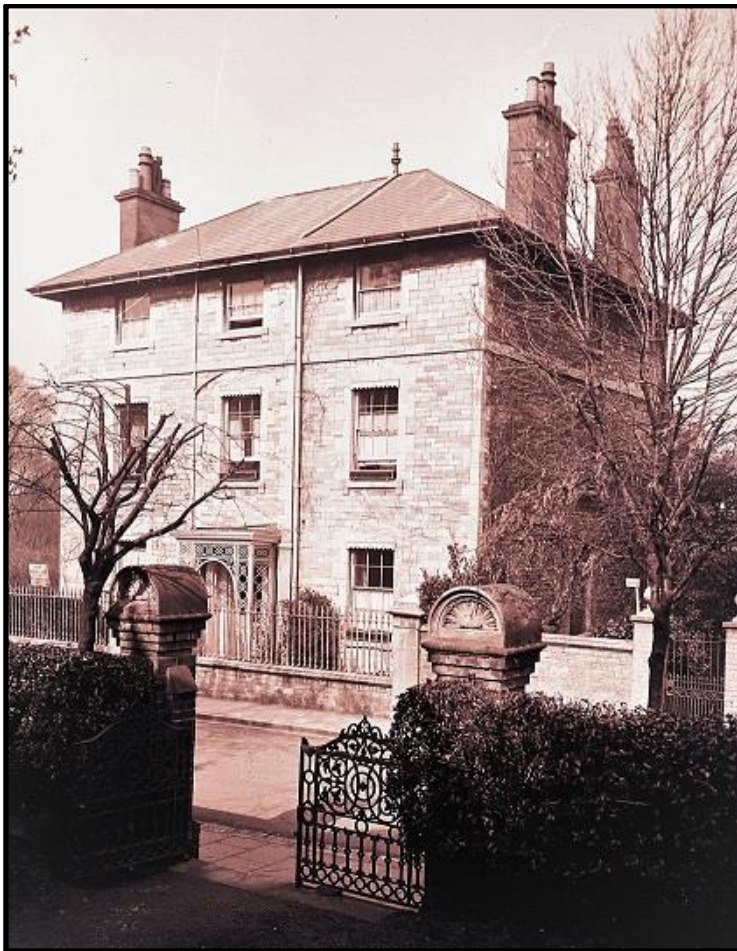
Circa. 1920s.



IWCMS:2009.373

## Spencer Lodge

In the early 1970s Spencer Lodge in Spencer Road was demolished. It had been the home of *Colonel John Fane Charles Hamilton* of the 38th Regiment. Circa. 1920s.



IWCMS:2009.379

## Althorp House

Althorp house in Spencer Road is a three storey building. The facade is faced with stone cut to imitate brickwork.

Spencer Road was named after the *2nd Earl Spencer* (1758 - 1834). He built the first house in the area in 1811.

The sign shows the property is being advertised through Wallis, Riddett of Town Hall Chambers.

Circa. 1920s.



IWCMS:2009.379

An unidentified house with a rounded end that may be an extension to the original. Circa. 1920s.