

# Ryde hotels and shops



IWCMS:2009.382



IWCMS:2009.381

## The Mentone Apartments

The Mentone Apartments, on the Esplanade. The views show both sides of Union Street, named after the 1801 Act of Union joining Britain and Ireland. Circa. 1920s.



IWCMS:2009.389

## Yelf's Hotel

Yelf's Hotel in Union Street dates to 1784 (it was altered in 1805 and again in the mid-19th century). Built by John Cooper, a brewer in the town, it was renamed Yelf's after Cooper sold it to Robert Yelf. Circa. 1920s.



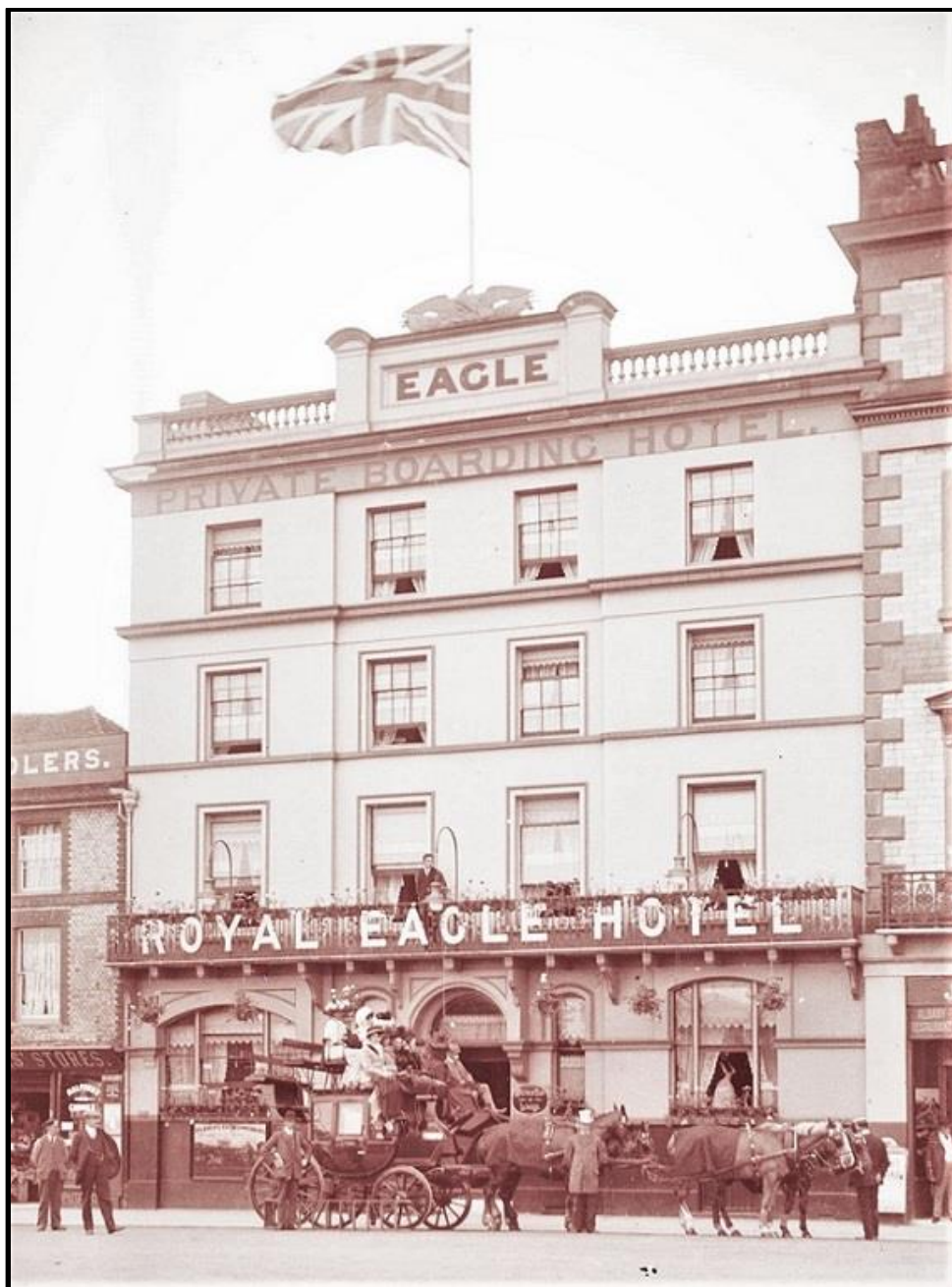
IWCMS:2009.383

## Colman & Sons shop

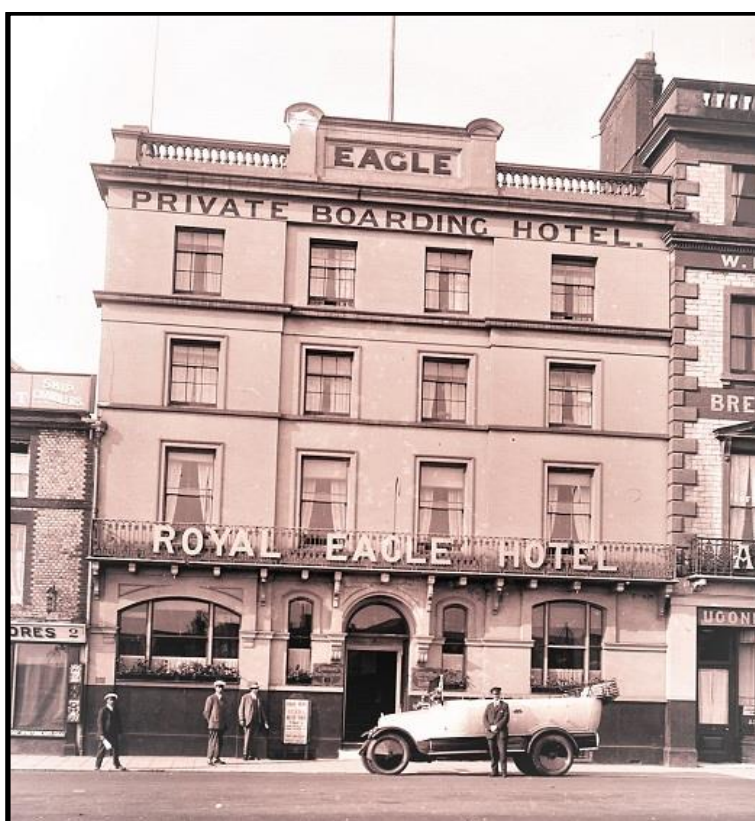
View of Colman's Boot Shop, 59 Union Street.

The building was built circa. 1830/40.

Circa. 1920s.



IWCMS:2009.386



IWCMS:2009.388

## The Royal Eagle Hotel

Situated on the Esplanade the Royal Eagle Hotel faced the pier and railway station.

Circa. 1910/20s.



IWCMS:2009.380

## Royal Esplanade Hotel

The "Esplanade Hotel" was built by a local builder called *Parsons and Saunders* and opened in 1867.

In the mid-1890s the hotel was sold and renamed the "Royal Esplanade Hotel" by the new owner Mr W. Bowland Cross.

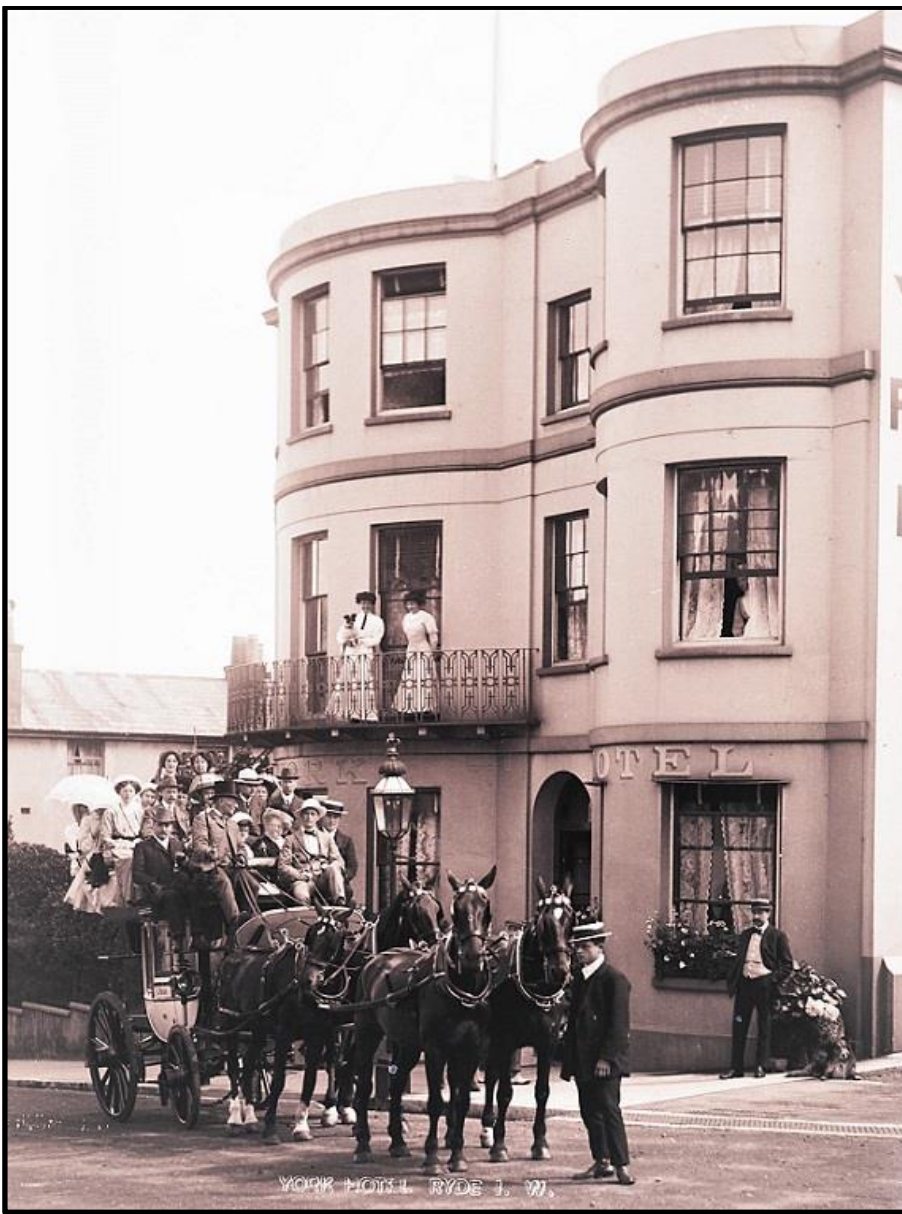
During WW II, part of the hotel was used as a naval supply office.

Circa. 1920s.



IWCMS:2009.384

The 1911 Kelly's Directory lists the Refuge Assurance Co as being located at 84 George Street. Circa. 1920s.



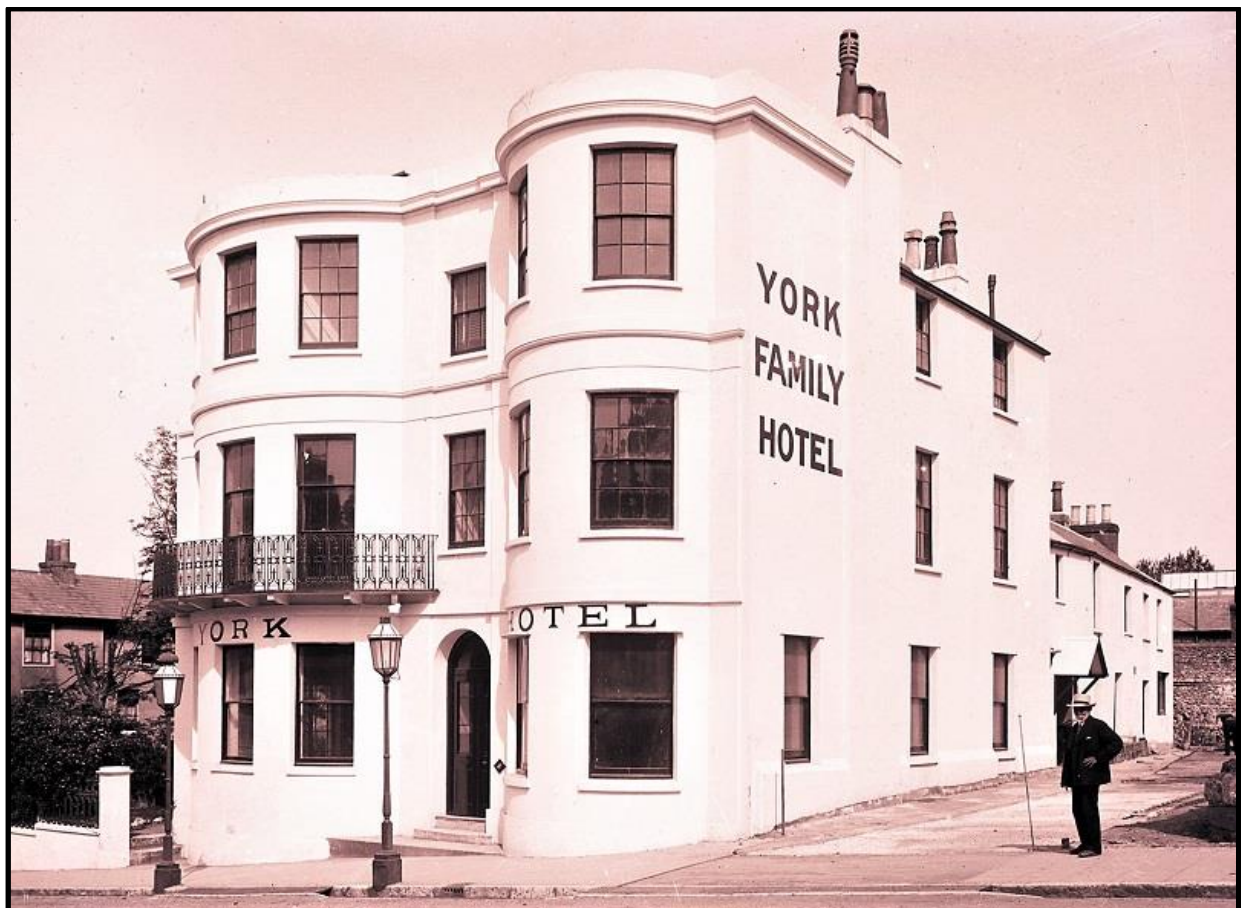
IWCMS:2009.392

## York Family Hotel

Around 1812 the York Hotel was built in George Street.

On 8 September 1870, the *Empress Eugene*, wife of *Napoleon III*, Emperor of France, spent a night in the York Hotel. She had left France to escape the rioting citizens who were demanding a Republic.

Circa. ➡ 1910s ⚡ 1920s



IWCMS:2009.385