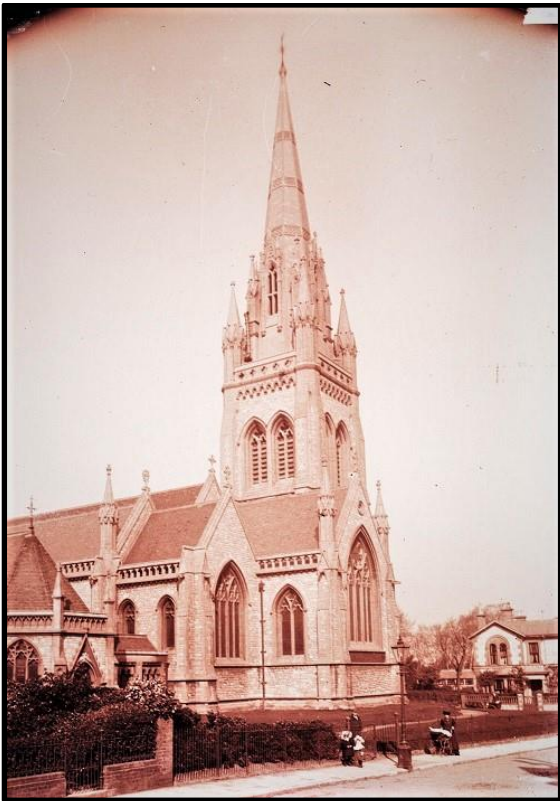
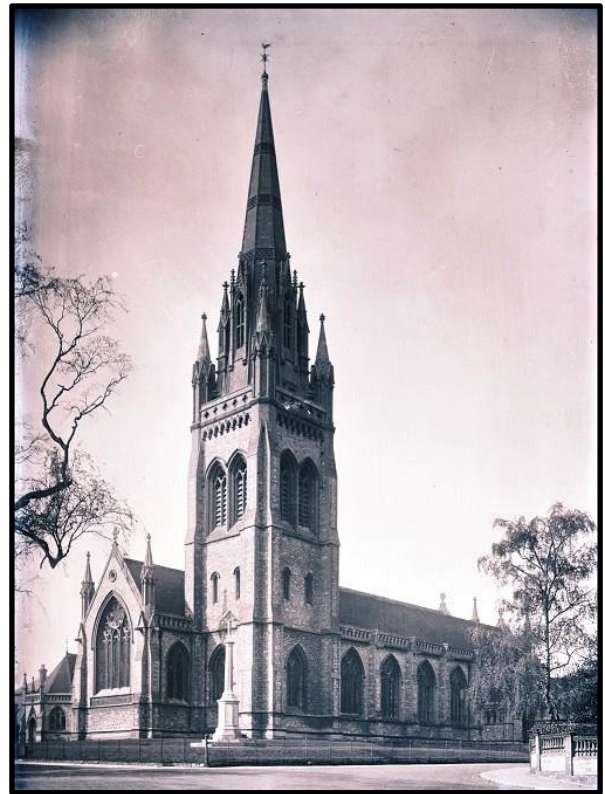


# Ryde Churches

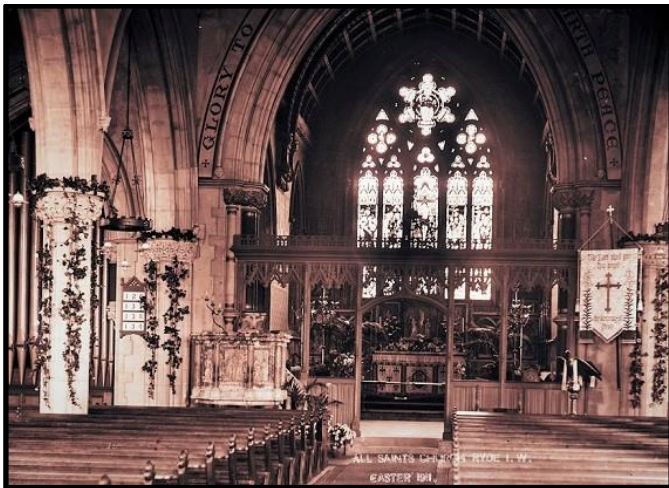


IWCMS:2009.272



IWCMS:2009.270

**All Saints' Church.** The building is an Island landmark visible from the mainland. It is sometimes referred to as the "Cathedral of the Island". The church was built between 1868 and 1872 by the architect George Gilbert Scott, with the 186 feet (56.7m) spire being added in 1881/82.

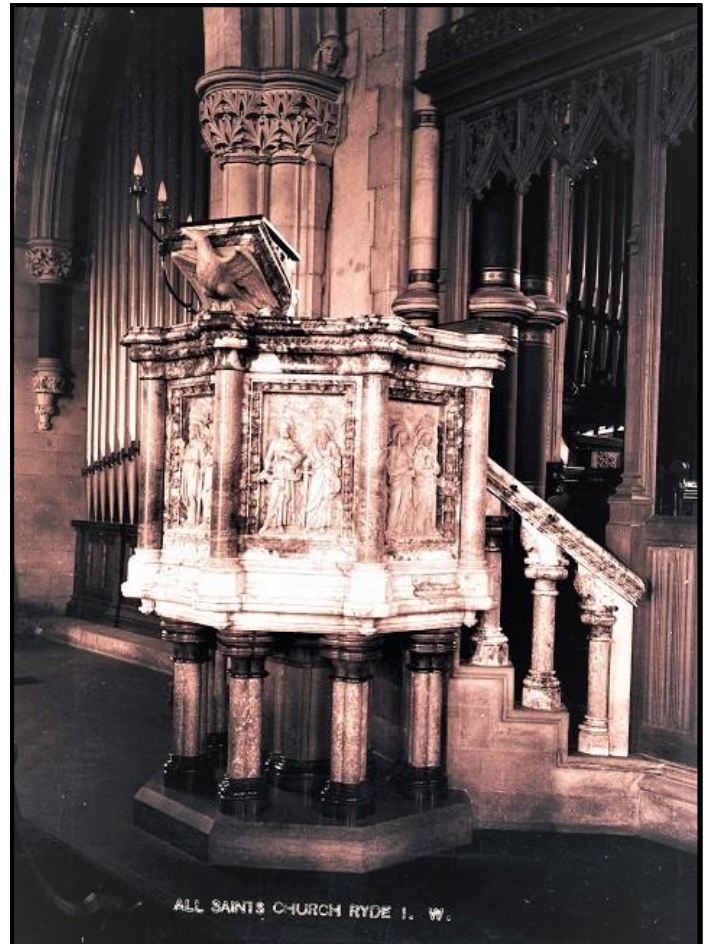


IWCMS:2009.256

*The nave, Easter 1911.*

The pulpit is made of Derbyshire alabaster on polished marble columns.

It was displayed in The Great Exhibition of 1851, winning 1st prize in its class.

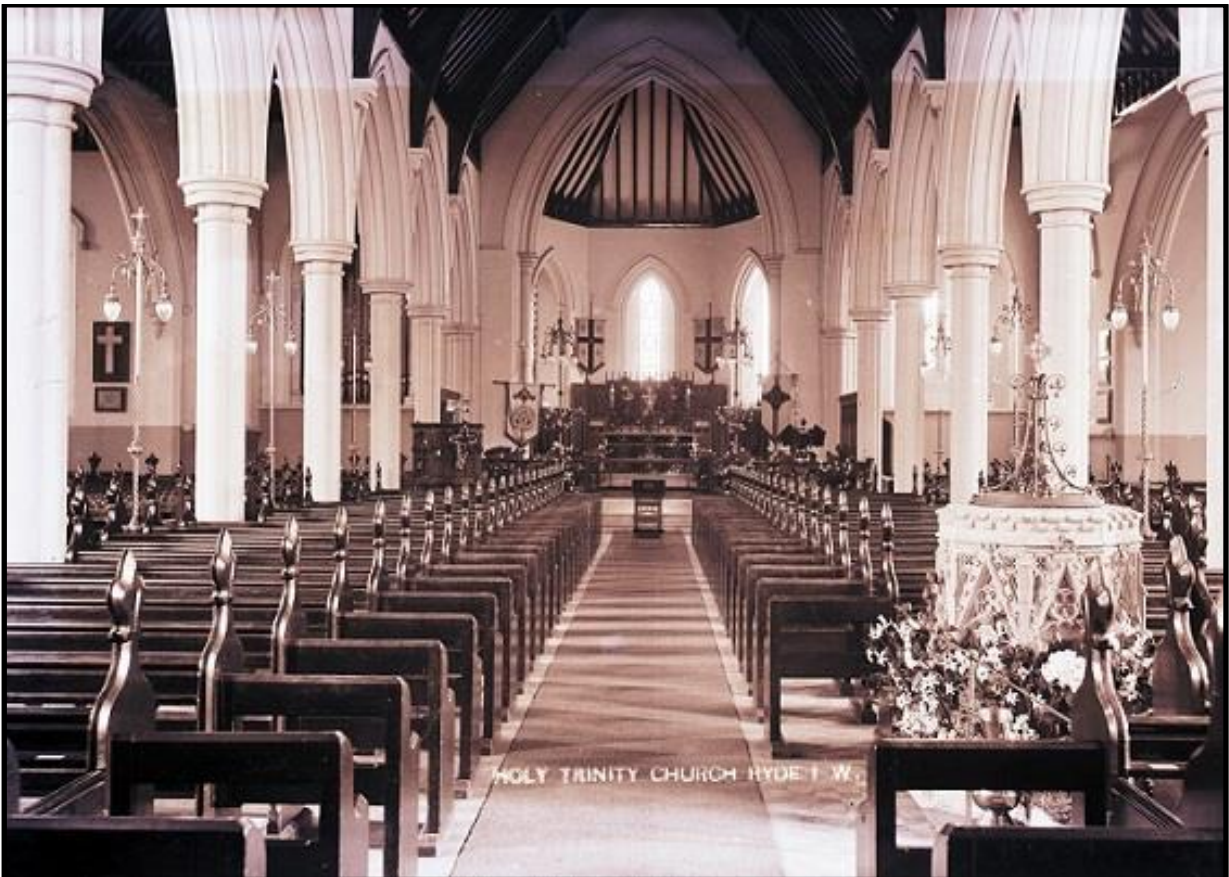


IWCMS:2009.254





IWCMS:2009.281



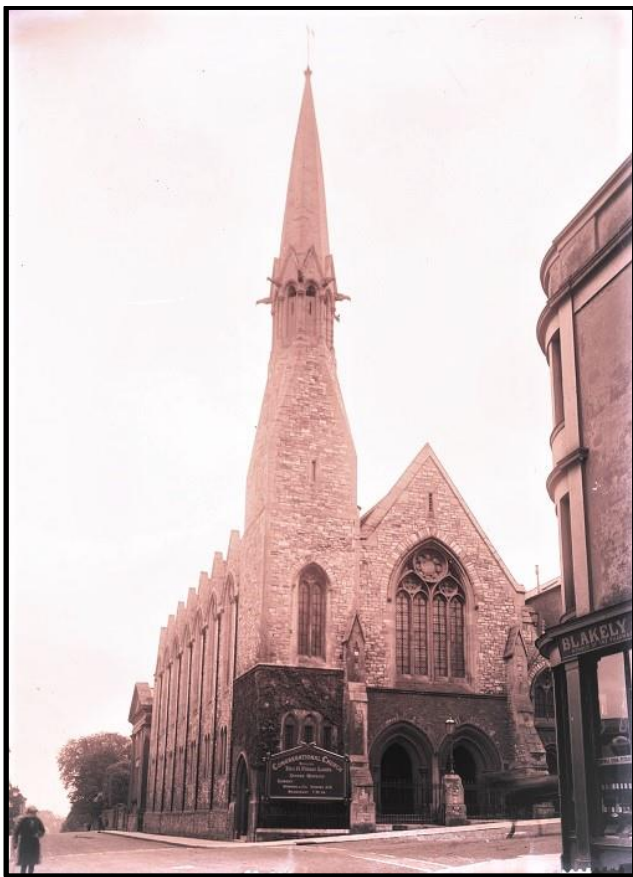
IWCMS:2009.283

## Holy Trinity Church

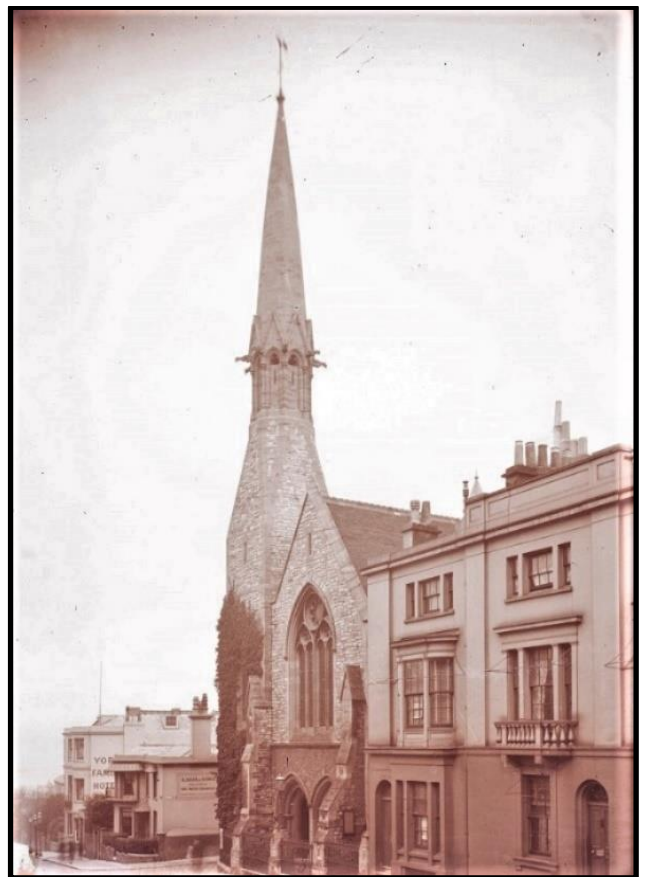
Holy Trinity Church is a former Church of England parish church that opened in 1845. The spire stands 134 feet (41 m) spire high.

The building has been used as a community centre since it closed for worship in 2014.





IWCMS:2009.313



IWCMS:2009.312



IWCMS:2009.314

*View of the interior of the Congregational Church from the balcony.*

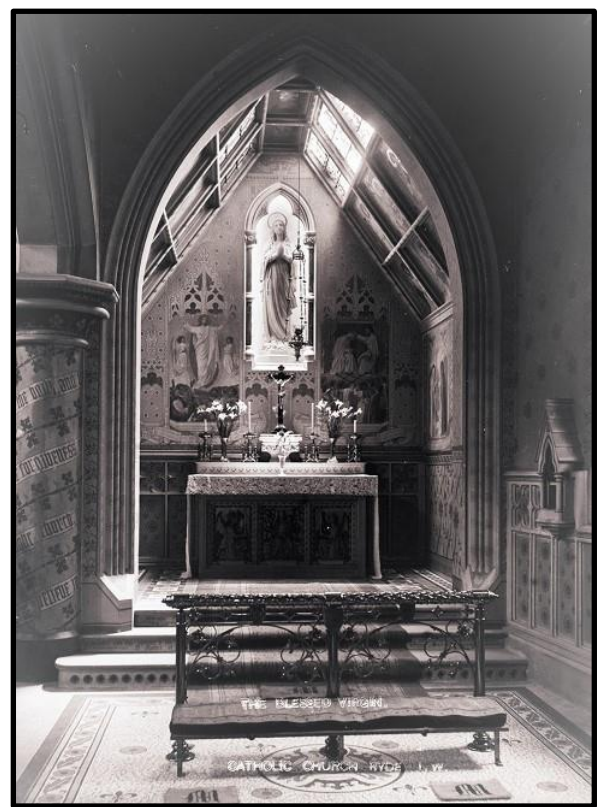
## **Ryde Congregational Church**

Built to replace an original church that had been destroyed by fire, the Congregational Church opened in 1872. Situated in George Street, it was closed in 1974 and then demolished. A store now stands on the site.

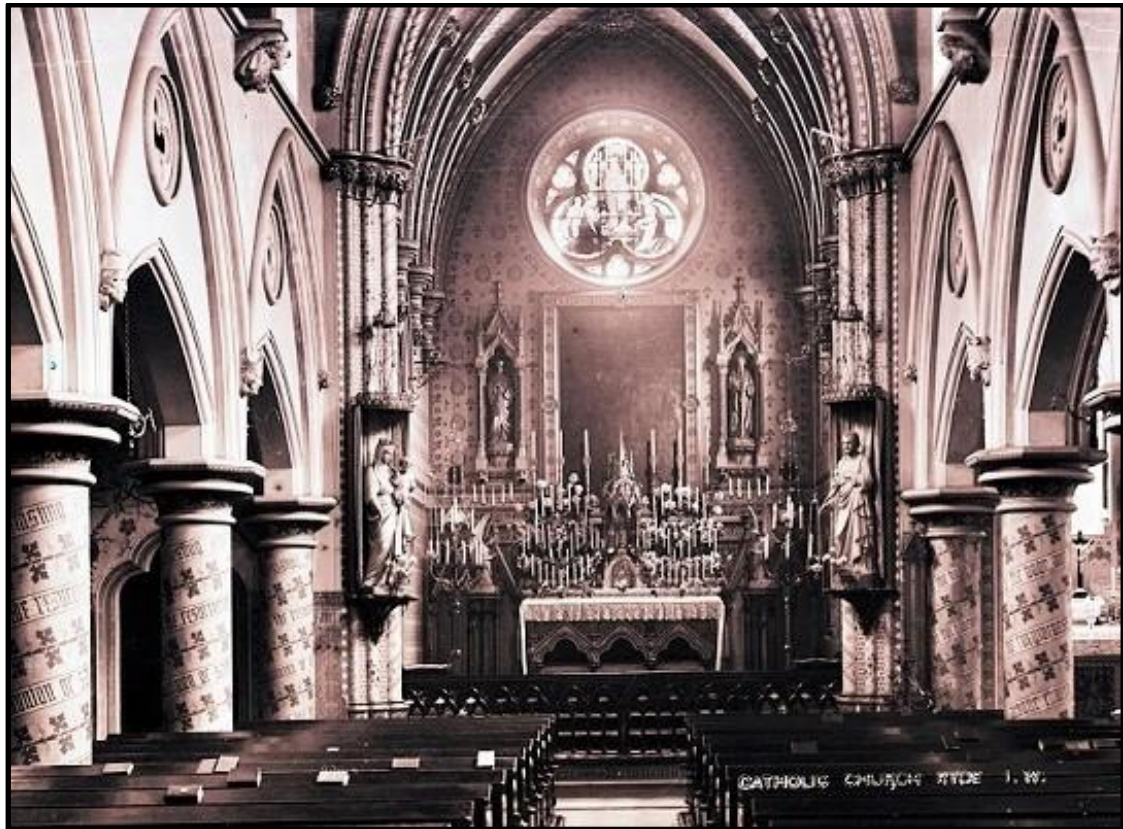




IWCMS:2009.291



IWCMS:2009.298



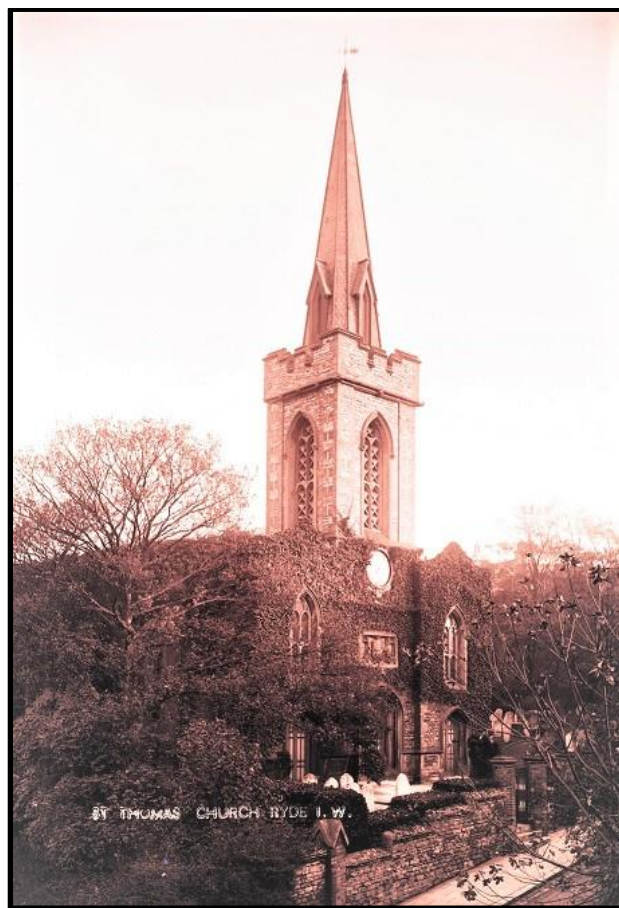
IWCMS:2009.293

## St. Mary's Church

Built in 1846, St Mary's was one of the finest early Victorian Catholic churches. Its actual dedication is the *Church of the Sorrowful and Immaculate Heart of Mary*; the first church in England to bear this title.

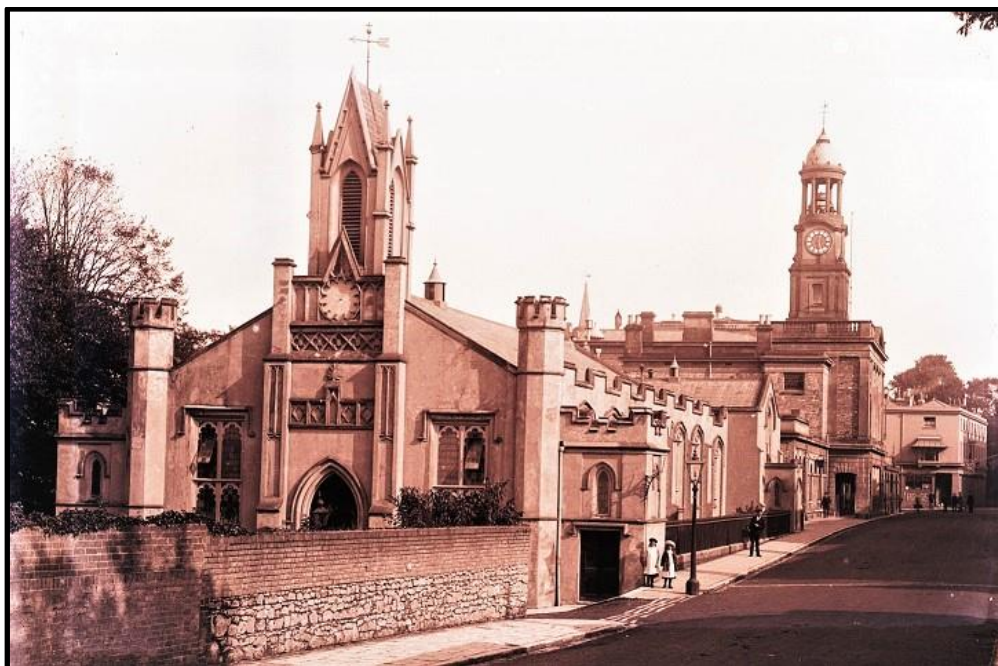
The Lady Chapel and Shrine of Our Lady (above right) were built in 1893. The shrine's altar was designed by Augustus Welby Pugin.





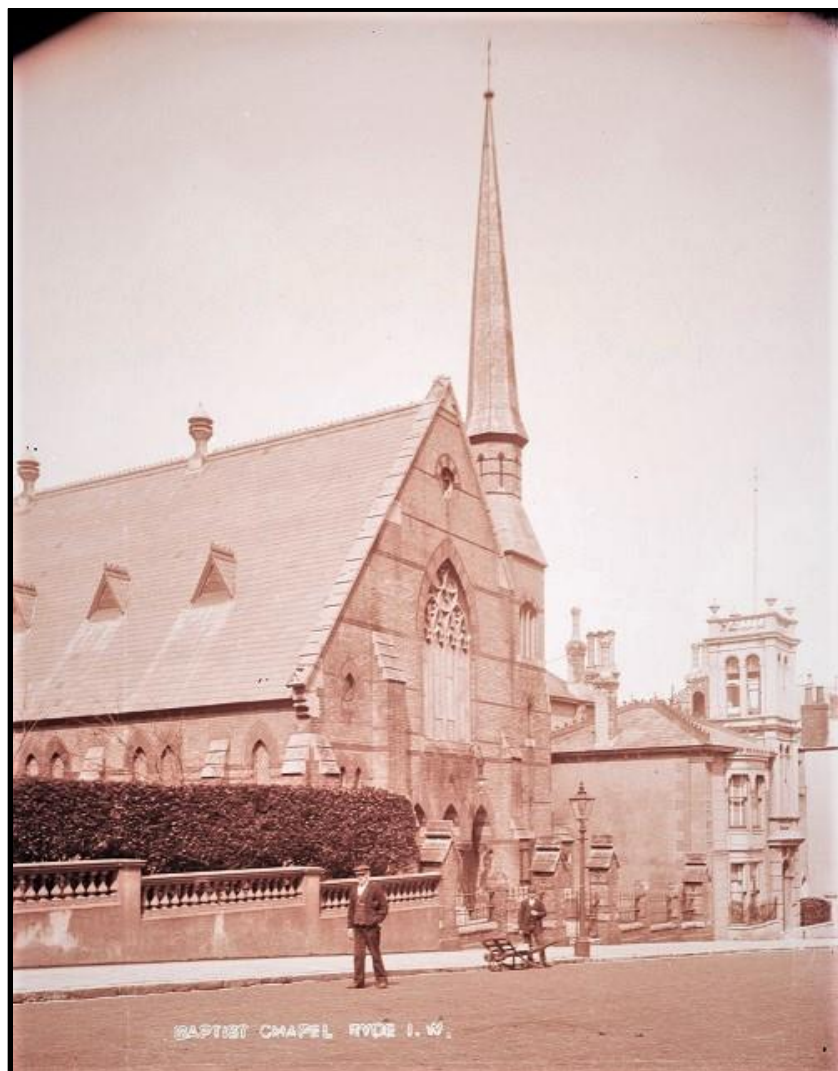
IWCMS:2009.288

**St Thomas Church** was built in the Early English style. It was designed by James Sanderson, who also designed the nearby Brigstocke Terrace. It remained in the ownership of the Brigstocke family until 1956 when George Robert Brigstocke, the last in his line, passed away. Services continued at the church until Sunday 28 June 1959, when doors closed for the last time.



IWCMS:2009.290

**St James' Church** in Lind Street, Ryde, a Proprietary Chapel was built in the Gothic style. It first opened its doors on 1 July 1827. The church was restored in the late 1960s.



IWCMS:2009.311



IWCMS:2009.310

**Ryde Baptist Church** in George Street was built in 1862. The building was damaged by a fire in 1995. Renovation work began on the church in 2003 and the following year the new George Street Centre, home of Ryde Baptist Church, opened.





IWCMS:2009.279



IWCMS:2009.280

**Ryde Methodist Church** in Garfield Road was built in 1883 as a Wesleyan chapel. John Wesley visited the Island in 1781 and opened the former Town Lane Chapel in Newport.