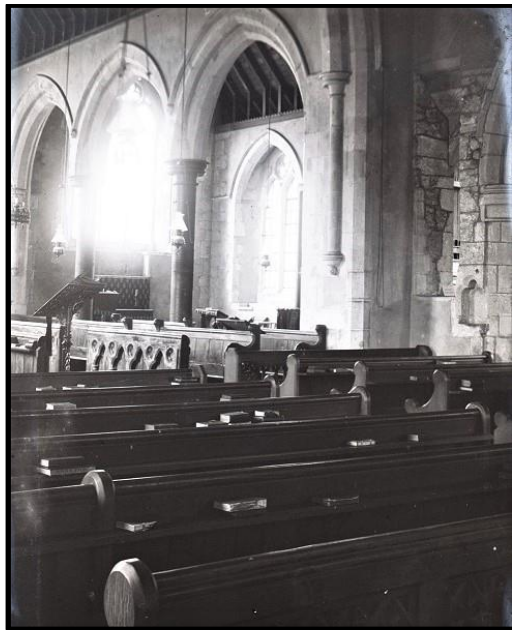


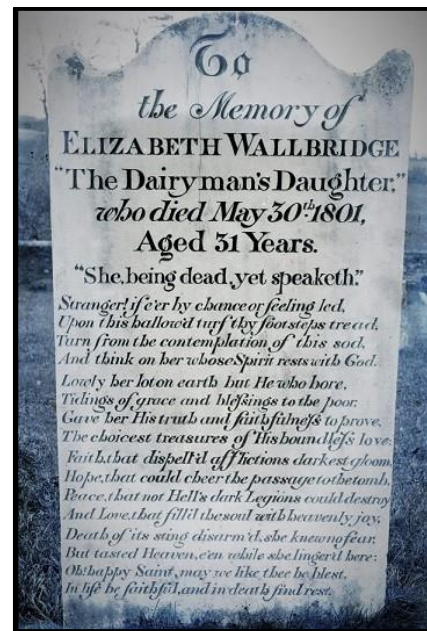
Island Churches



IWCMS:2009.451



IWCMS:2009.445

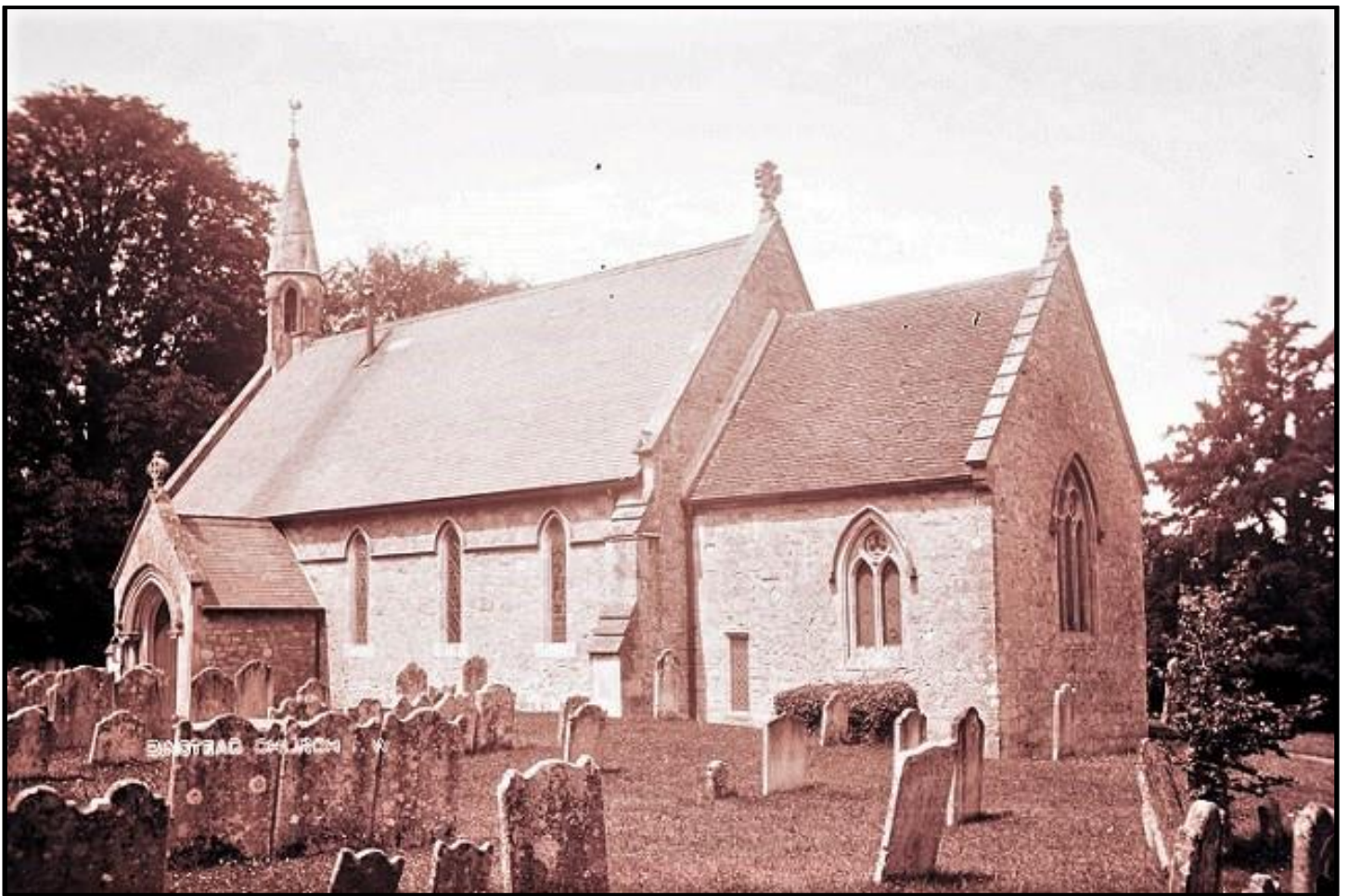


IWCMS:2009.450

Arreton, St George's Church

The church building dates to the late Saxon period, with the earliest parts thought to have been built in the 10th-century. The body of the church may be late Saxon and early Norman. Around 1200 a north aisle was added, and shortly after a south aisle enlarged the building still further.

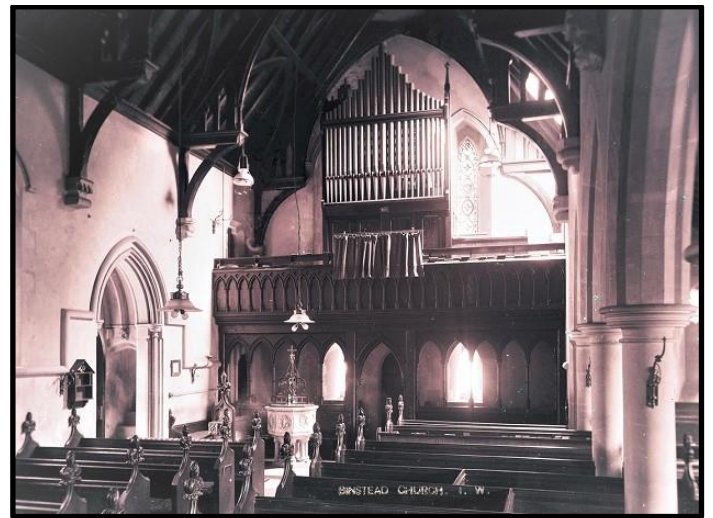
The memorial of *Elizabeth Wallbridge the Dairyman's Daughter* (above right) can be found in the graveyard. Chronicling her conversion to Methodism, "*The Dairyman's Daughter*" was written by *The Revd. Legh Richmond*, curate of Brading. The book influenced writers from *Charlotte Bronte* to *Charles Dickens* and sold over 10 million copies.



IWCMS:2009.343



IWCMS:2009.348



IWCMS:2009.347

Binstead, Holy Cross Church

Built of local stone, the church dates to the 11th and 13th centuries. It was probably built for the use of the local quarry workers.

Most of the chancel is of herringbone masonry. The original nave was replaced in 1844 and enlarged in 1875 with the addition of a north aisle.

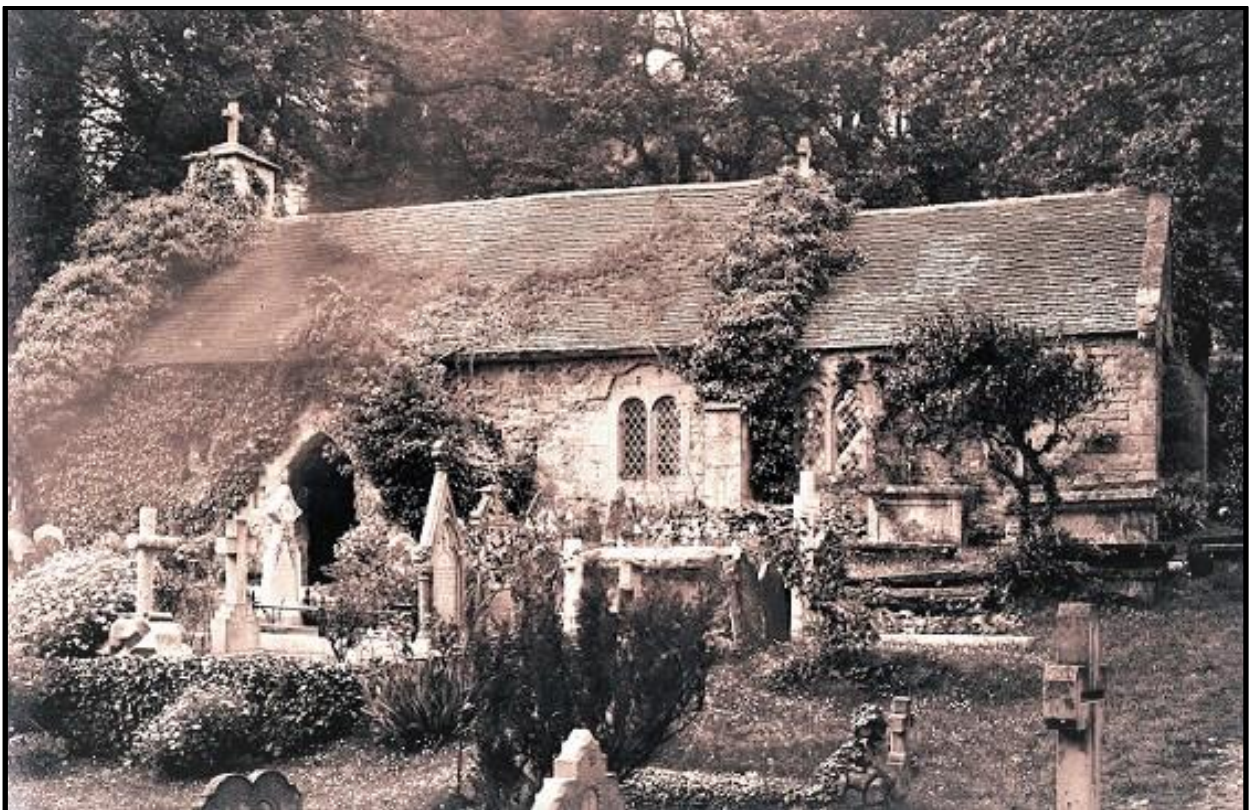
The bellcote (a small framework and shelter for one or more bells) dates from 1925 and contains a pre-reformation bell believed to have come from the original abbey at Quarr.



IWCMS:2009.342

Binstead, Wesleyan Chapel

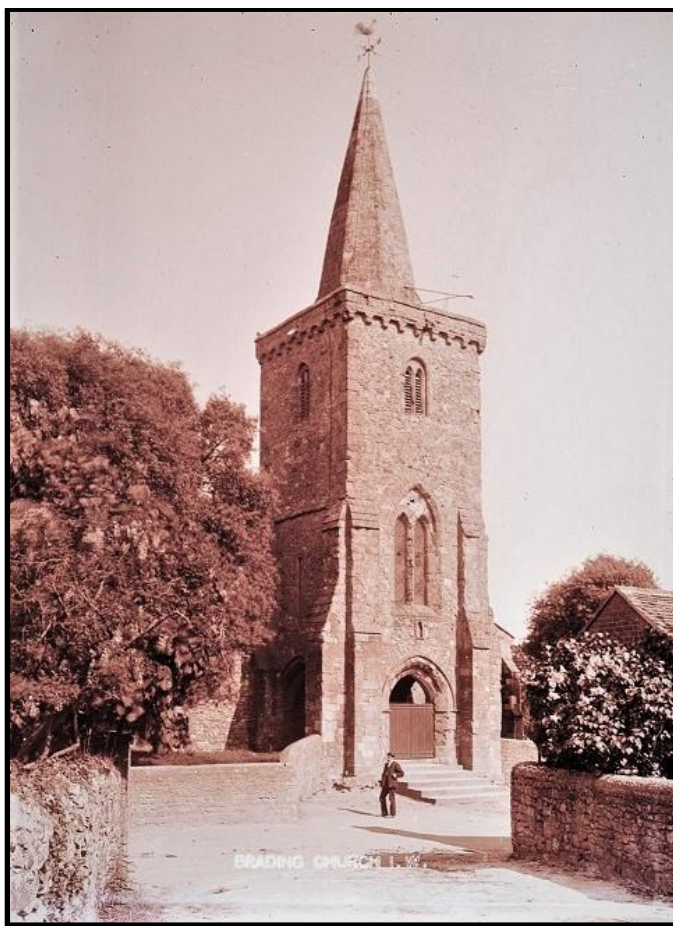
Binstead Methodist Church was built in 1889 to replace the original chapel of 1866, which is now the church hall.



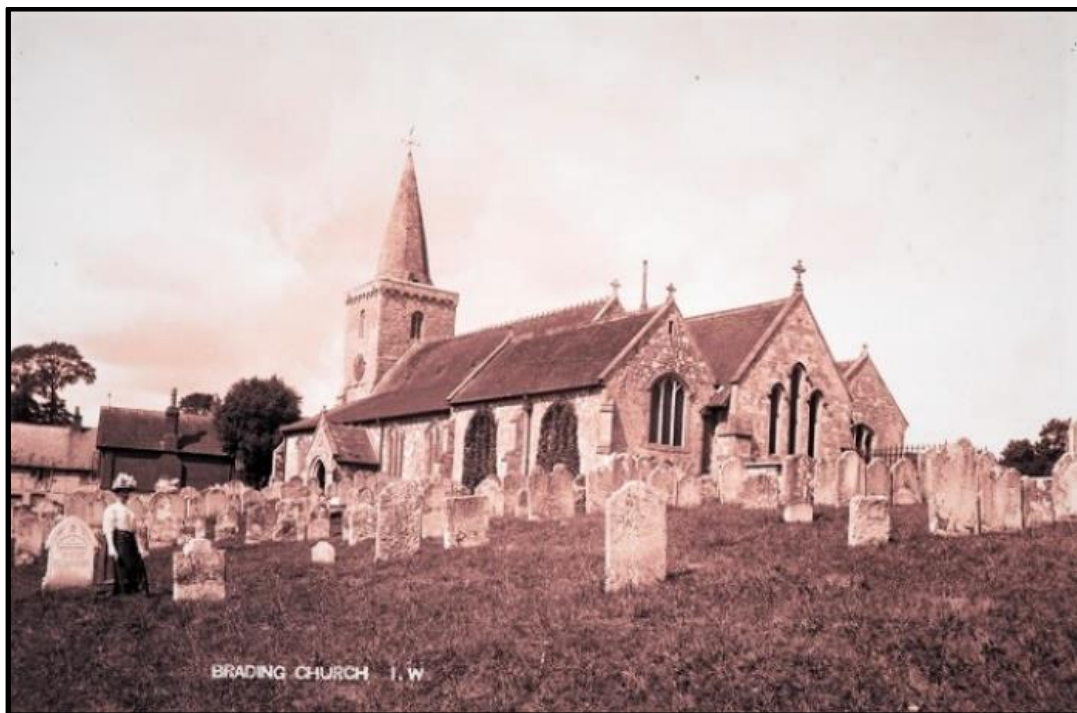
IWCMS:2009.351

Bonchurch, St. Boniface Old Church

The small structure of St Boniface Old Church is of Norman origin. It is one of the few medieval churches in England dedicated to this Saxon monk who died in 755AD.



IWCMS:2009.333



IWCMS:2009.334

Brading, St. Mary's Church

This medieval church dates to the twelfth century. The 13th-century tower is built on four piers at the entrance to the church. The tower contains 8 bells, the oldest being cast in 1594.

At this church the *Rev. Legh Richmond* (see Arreton above) is thought to have originated the now popular idea of using boards with movable numerals to indicate the hymn numbers.



IWCMS:2009.335

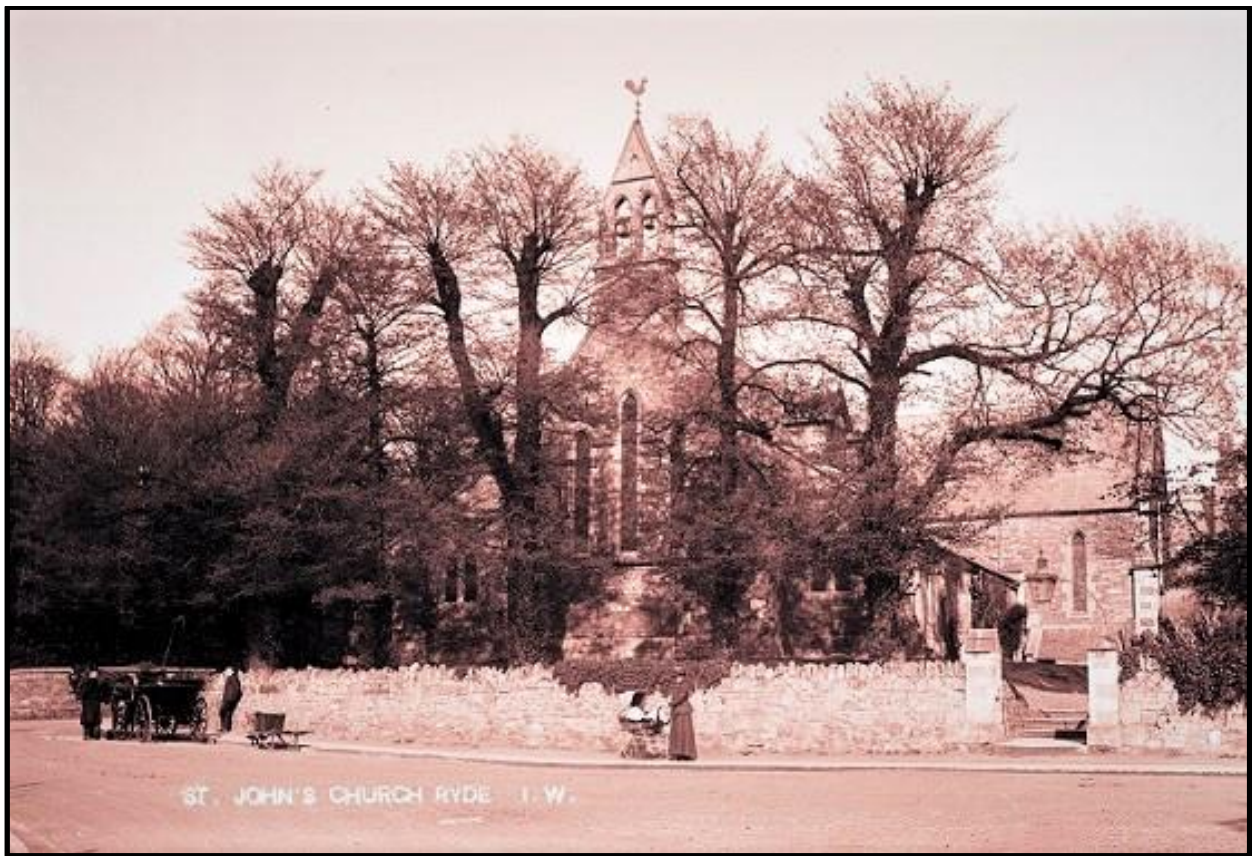


IWCMS:2009.341

Havenstreet, St. Peter's Church

The Parish Church of St Peter was built by *Thomas Hellyer* of Ryde in 1852. The building was constructed of rough local limestone rubble with stone dressings and steeply pitched red tile roofs.

The rood screen with open tracery was set up in memory of the Rev. H.N. Thompson (1897-1909).



IWCMS:2009.301

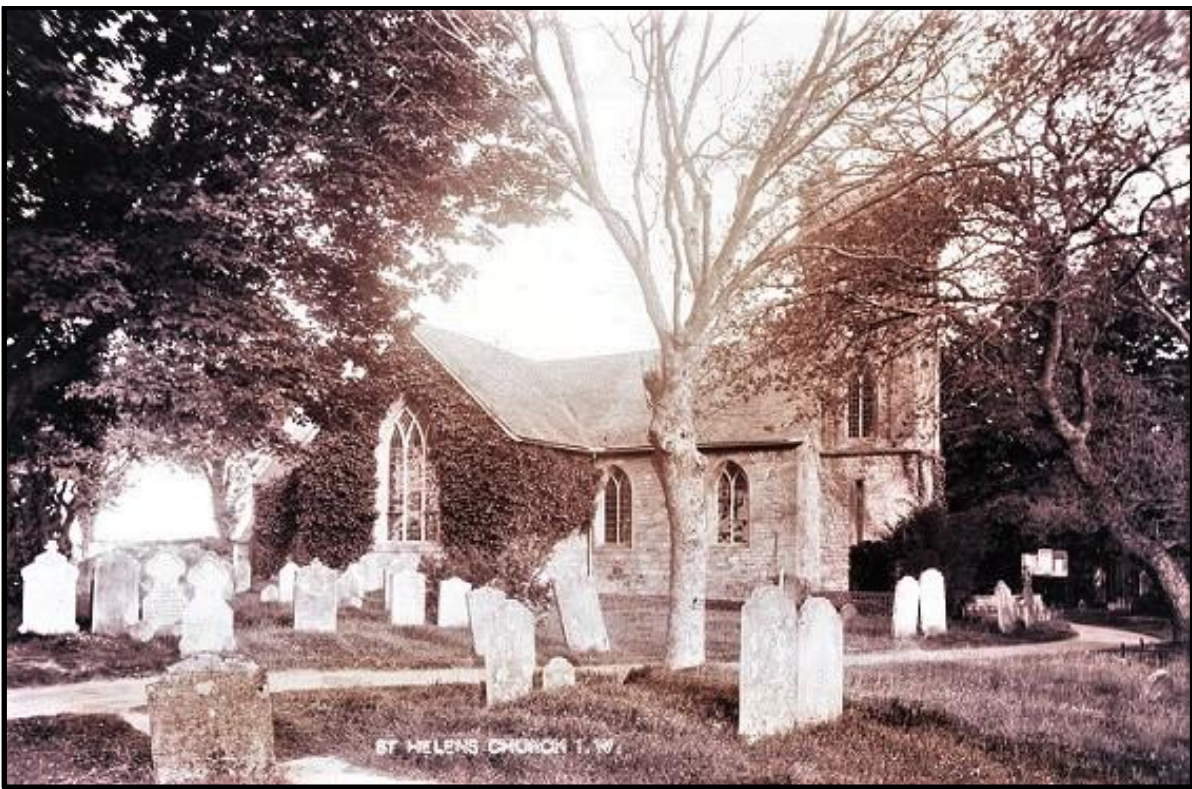


IWCMS:2009.307

Oakfield, St. John the Baptist Church

The first plans for a church on the present site in Oakfield (near Ryde) were produced in 1841. The Church was consecrated on 18 July 1843 by the Bishop of Winchester.

With the increasing numbers of worshippers during the mid-1860s, the North Aisle was built to match the South.



IWCMS:2009.350

St. Helen's, St. Helens Church

Dedicated to St Helena, the church on this site was built in 1717 to replace an earlier one that had fallen into a ruinous state. The tower of the old church still stands by the sea wall. In 1831 the present church was rebuilt.



IWCMS:2009.349

Yarmouth, St. James Church

The foundations are medieval, but little remains.

Destroyed by the French in their raid of 1377, it is said to have been rebuilt on the present site only to be again reduced to a ruin in 1543.

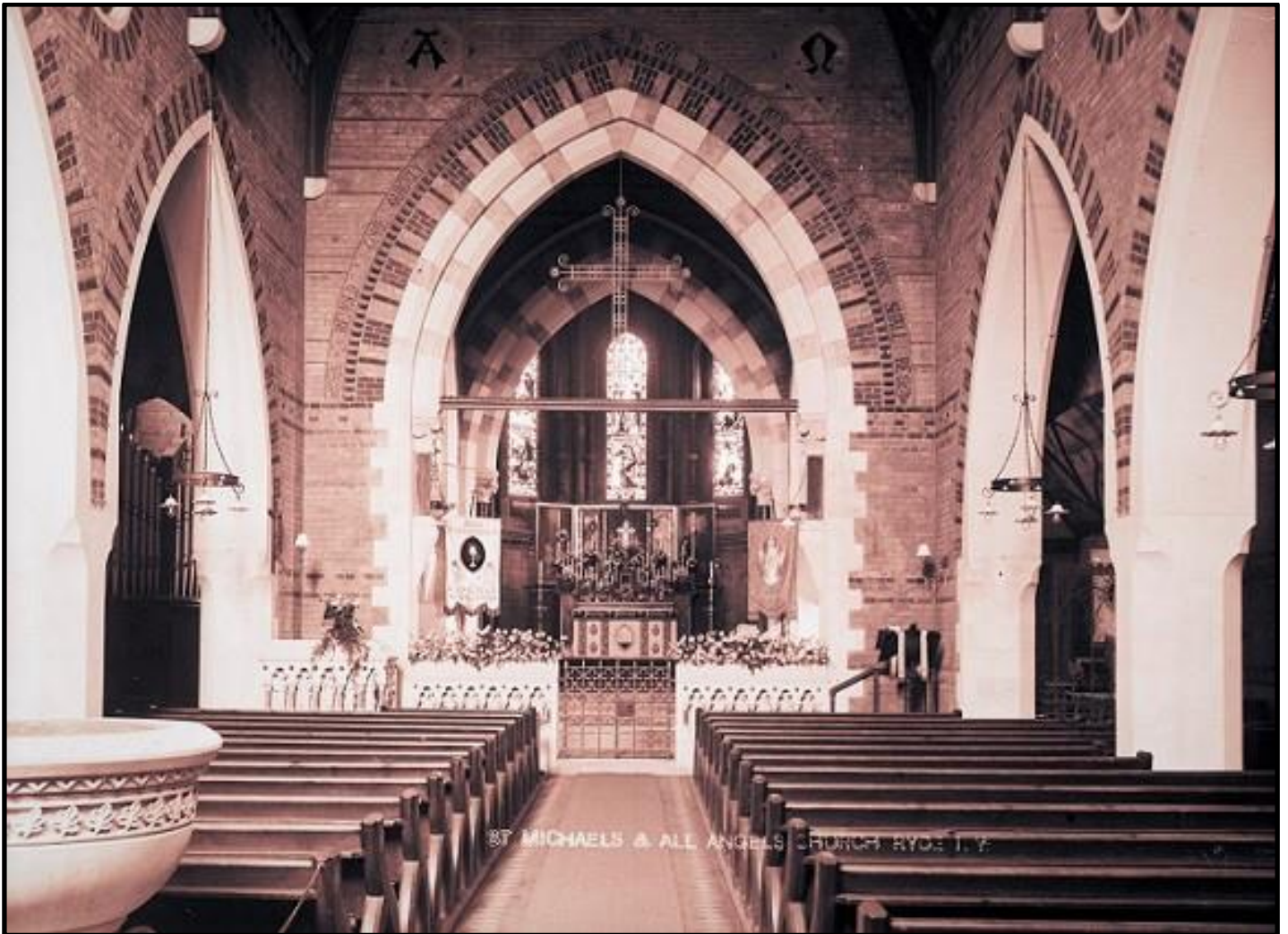
Construction of the present church began in 1635.



IWCMS:2009.316



IWCMS:2009.318



IWCMS:2009.327

Swanmore, St Michael and All Angels Church

The Parish Church of Swanmore (near Ryde), was built in the Medieval French style by the architect R. J. Jones and consecrated by the Bishop of Winchester in 1863.

The Church is cruciform in shape. The central square tower is nearly 90 feet (27m) high with three bells hung on the second level.