

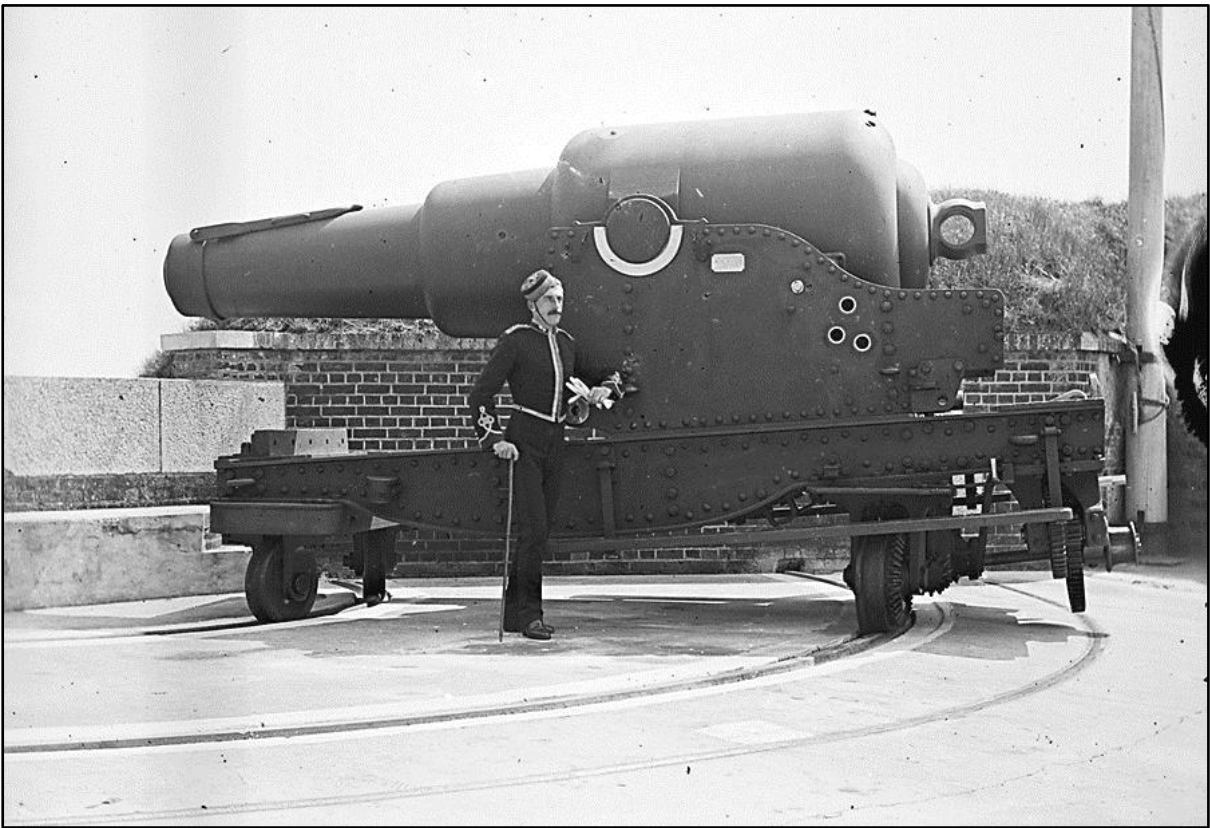
Military life



Doubling 18-Ton Gun. An 18 ton gun being transported along Culver Parade from Sandown Fort. Circa. 1890-1914 IWCMS.2012.88



18 Ton Gun - Through the Street. An 18 ton gun being hauled through the streets of Sandown. Circa. 1890-1914 IWCMS.1995.532



A Woolwich Infant. A Woolwich Infantry soldier poses with an 11 inch rifled muzzle loading gun at Puckpool barracks. Circa. 1890-1914

IWCMS.1995.529



IOW Yeomanry on the March. Yeomanry officers on horseback ride through the streets. Circa. 1890-1914

IWCMS.1995.538



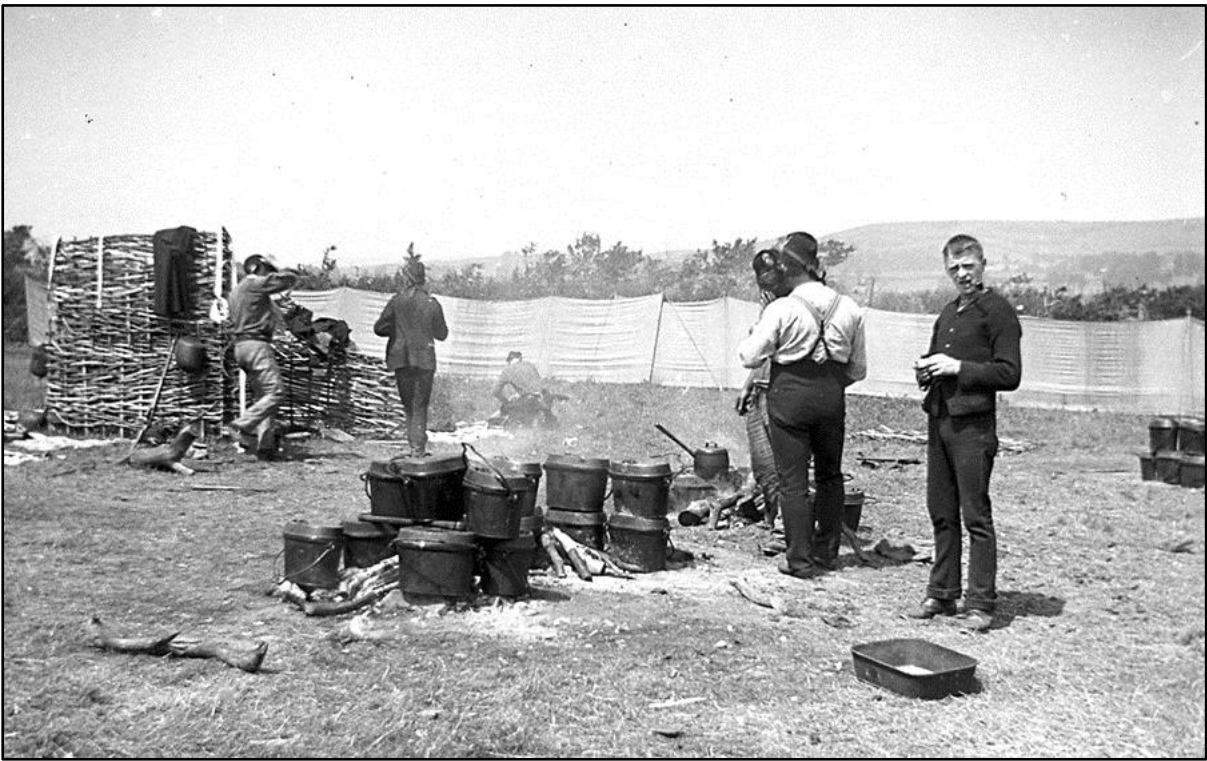
IOW Fusiliers - Between the lines. Rows of tents and weapons belonging to the Royal Fusiliers camped at Sandown. Circa. 1880-1914

IWCMS.1995.534



A group of Royal Fusiliers camped at Sandown. Circa. 1900

IWCMS.1995.535



Fusiliers - The Camp Kitchen. The Royal Fusiliers camp kitchen at Sandown. Circa. 1880-1914

IWCMS.2012.71



Fusiliers – A Barbarous Lot. Members of the Royal Fusiliers waiting to have their hair cut outside one of the Island's forts. Circa. 1900

IWCMS.2012.78

Before the outbreak of the First World War the 4th Battalion, The Royal Fusiliers (City of London Regiment) were based in Parkhurst Barracks and manned the Island's forts.



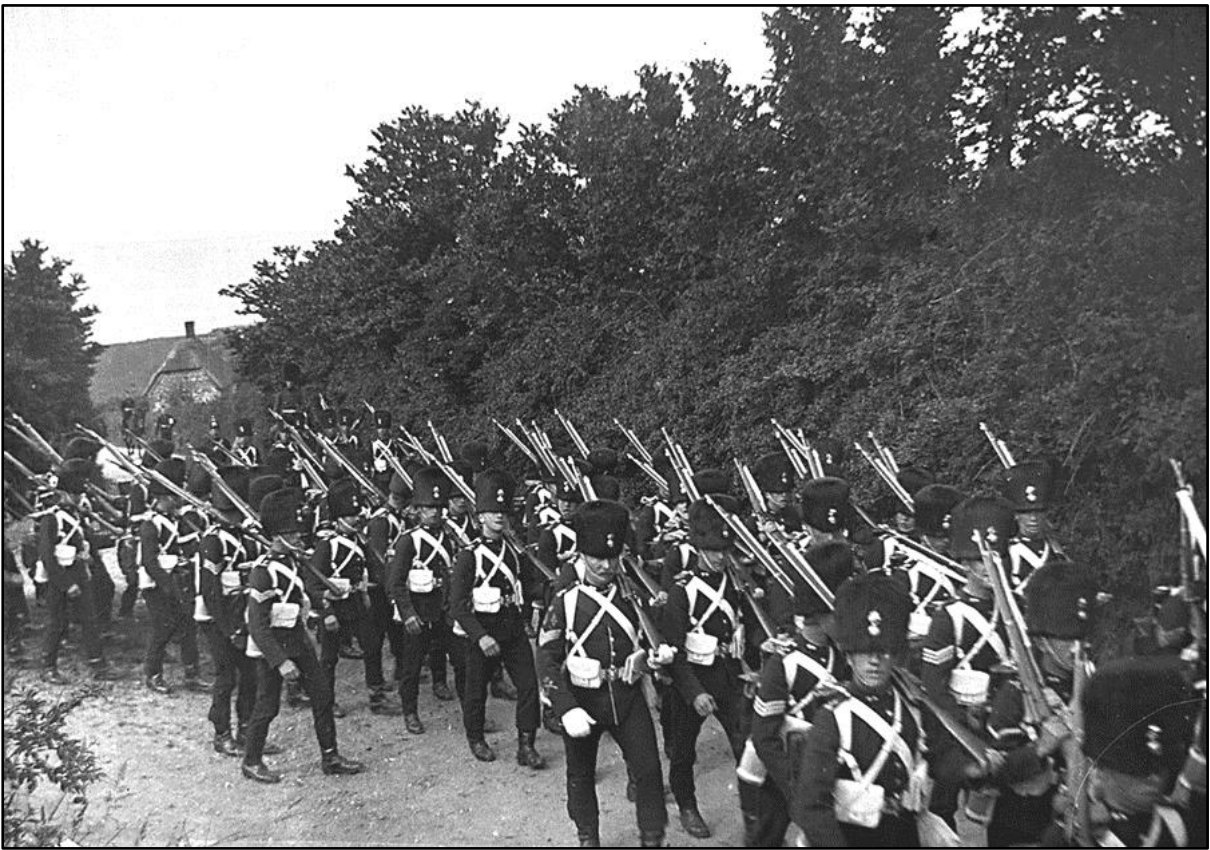
Fusiliers 'under cover' on Esplanade. Royal Fusiliers carrying out a training exercise on Sandown Esplanade. Circa. 1900

IWCMS.2012.63



Fusiliers - In Marching Order. Members of the Royal Fusiliers band preparing to march from their Sandown camp. Circa. 1880-1914

IWCMS.2012.95



Fusiliers - The Departure. Members of the Royal Fusiliers marching down an Island lane. Circa. 1900

IWCMS.2012.93



I.W. Rifle Vol. - Prince Henry and Staff. Prince Henry of Battenberg in his role as Honorary Colonel of the 'Isle of Wight Rifles' along with his staff. The picture dates to pre-November 1895 when Prince Henry left to fight in West Africa. Circa. 1880-1895

IWCMS.2012.64



IOW Rifle Volunteers off to Camp. The 'Isle of Wight Rifles' volunteers march through Sandown on their way to camp. The Railway Hotel is visible on the right and in the centre is WW Joliffe, Estate Agents. Circa. 1890-1914

IWCMS.1995.537



I.W. Rifle Vol. Defending the Shore. 'The Isle of Wight Rifles' volunteers shooting practice on Sandown promenade. Used cartridges can be seen on the pavement. Circa. 1900

IWCMS.1995.536

At the start of World War One the 'The Isle of Wight Rifles' volunteers, took over the running of the Island's forts when the professional 'Royal Fusiliers' (City of London Regiment) were sent to France with the BEF (British Expeditionary Force), landing at Le Harve on the 13 August 1914.



The Freshwater branch of the 'Army Temperance Association' at the Egypt Tea Lawns, Cowes. August 1911

IWCMS.1995.4347