

Lifeboats and Coastguards



Atherfield lifeboat crew. The Atherfield lifeboat, *Catherine Swift*, with her crew. *David, Frank* and (coxswain) *Rufus Cotton* are in the boat. Circa. 1890-1903 From the J B Williamson Collection. IWCMS.2009.58



Lifeboat practise. The Bembridge lifeboat, *Queen Victoria*, is being pulled from the lifeboat house. Circa. 1888-1902 From the J B Williamson Collection. IWCMS.2009.165

The "*Queen Victoria*" lifeboat was on service at Bembridge, Isle of Wight, from 1887 to 1902.

On completion of her operational life, she was sold to one of the lifeboat crew, and eventually became the first houseboat in Bembridge Harbour.

Abandoned, and in a derelict condition, she was purchased in 1989 and restored back to her original condition by 1998.



Stuck in the sand (lifeboat practise). The Bembridge lifeboat, *Queen Victoria*, is being wheeled down to the water's edge during lifeboat practise. Circa. 1888-1902 From the J B Williamson Collection.

IWCMS.2009.123



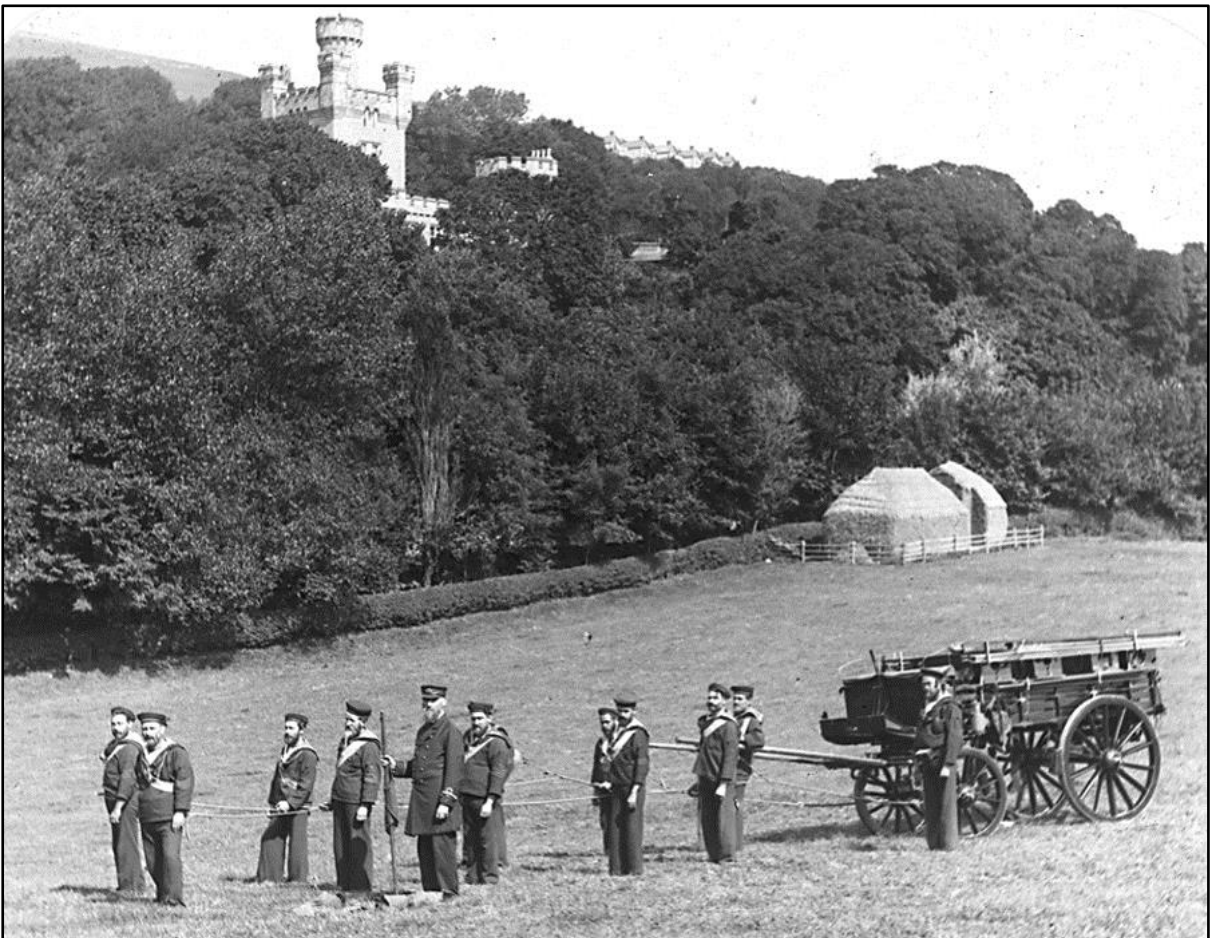
Lifeboat practise. The Bembridge lifeboat, *Queen Victoria*, coming back ashore after lifeboat practise. Circa. 1888-1902

From the J B Williamson Collection.

IWCMS.2009.125



Lifeboat practise - hauling the Boat up. The Bembridge lifeboat, Queen Victoria, being hauled up the beach after lifeboat practise. Circa. 1888-1902 From the J B Williamson Collection. IWCMS.2009.127



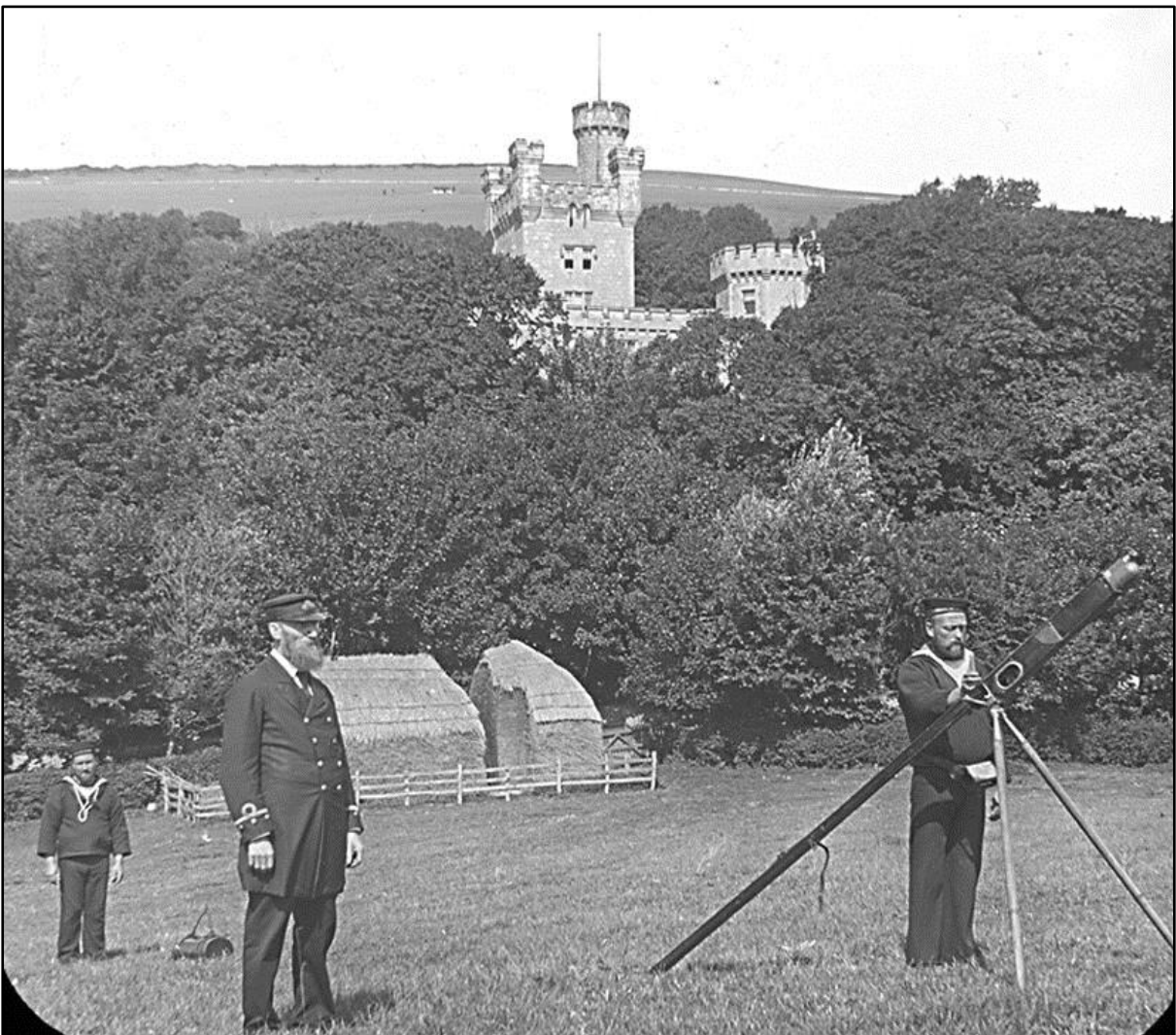
An Island coastguard team with their equipment in a field below Steephill Castle. Circa. 1880-1915

IWCMS.2009.146



Rocket life saving practise - making up gear. Coastguards with their cart and equipment. Circa. 1880-1915

IWCMS.2012.352



Rocket drill - Ready to fire. Coastguards preparing to fire a rocket. Steephill Castle can be seen in the background. Circa. 1880-1915

IWCMS.2012.350



Coastguards training session with their rocket life saving apparatus. Circa. 1880-1914

IWCMS.1995.586

During an inshore sea rescue one of the most useful devices is something that can get a rope to a ship. The coastguards would fire a rocket with a rope attached to a vessel allowing crew and passengers to be hauled to land.



Double long rope drill 1913. Coastguard lifesaving practise with two ropes, a man is on one and a woman on the other. 1913

IWCMS.2009.147