

# James Dore 1854-1925

## Photographer

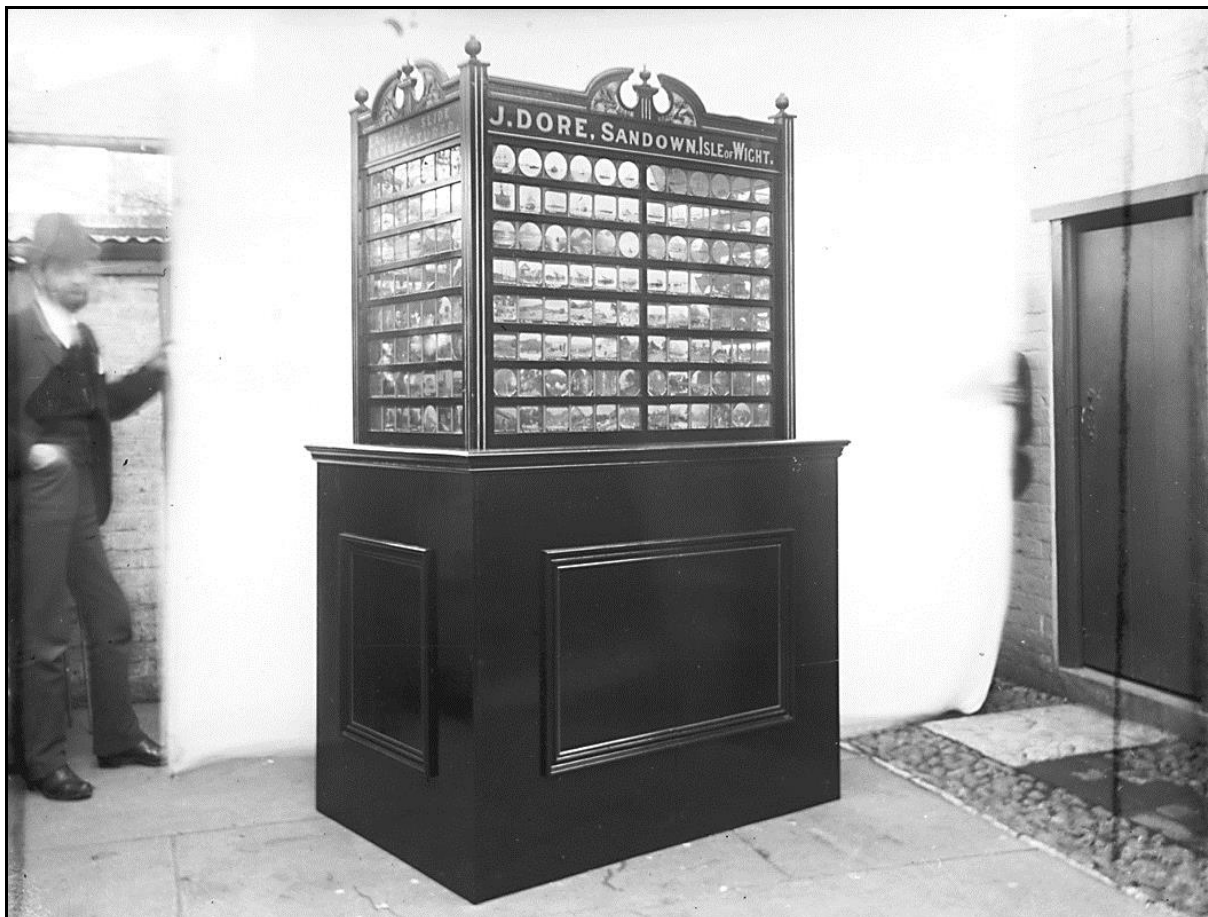
James Dore was born in Sandown in 1854 and was educated at the local church-schools.

He was apprenticed to his brother-in-law, a watchmaker and jeweller. In 1874 he took over the business.

Dore was numbered among the tradesmen of Sandown for over half a century.

Dore ran his jewellery business at 27, High Street, Sandown. He built up the shop's photographic department and practised the art, achieving a high standard.

He exhibited at the Royal Photographic Society and took a medal and diploma for his lantern slides at the World's Fair, Chicago in 1893.



J. Dore, Photographer's shop, High Street, Sandown. The lantern slide display case that James Dore exhibited at the World's Fair, Chicago in 1893. Circa. 1893



**The lantern slide display case that was exhibited at the World's Fair, Chicago in 1893 (detail showing the slides).**

IWCMS.1995.570

**Dore was a County Councillor for Sandown for over 20 years. He became a Justice of the Peace in 1910.**

**He was an original member of the town's Fire Brigade, joining in 1879 and rising to the position of Chief Officer.**



**Sandown Fire Brigade. Sandown Fire crew on a horse drawn engine outside Sandown Town Hall. (detail) (It is not known if James Dore is among the crew).**

IWCMS.1995.558



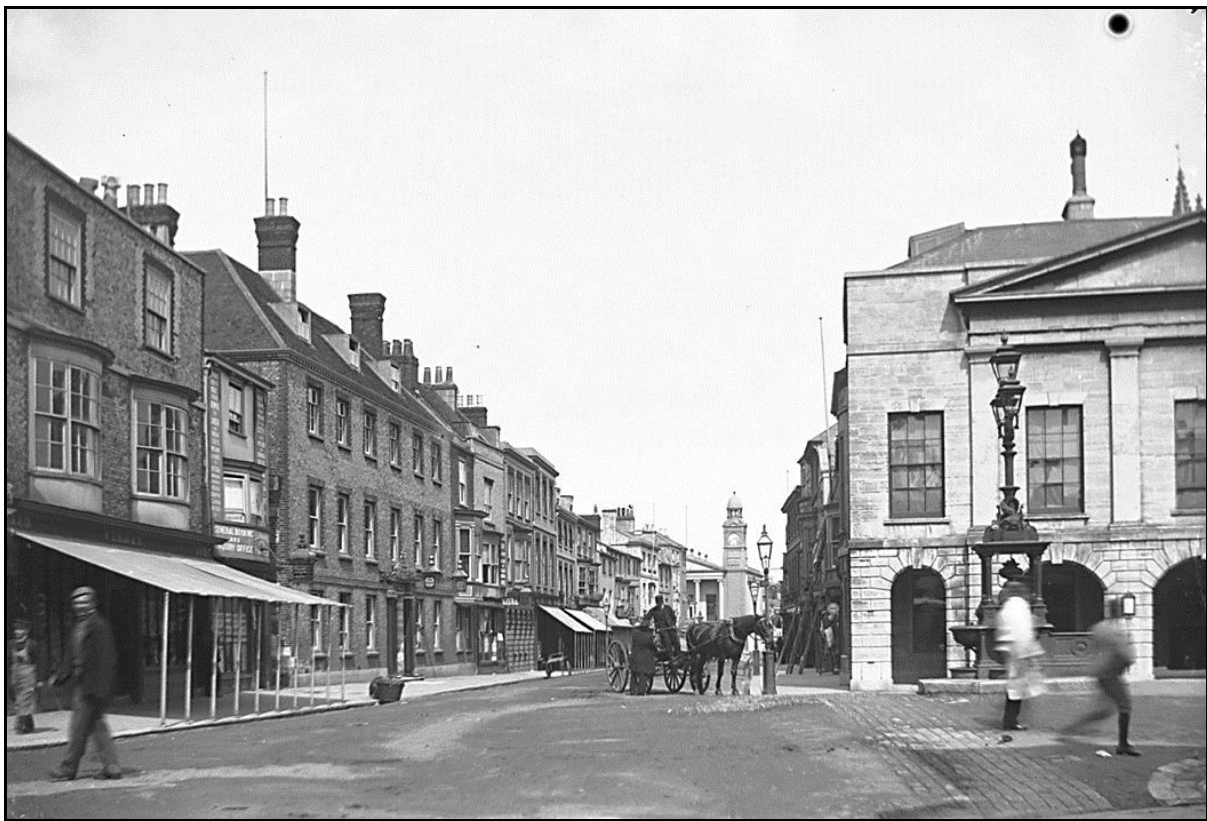
**Fire at Branstone 1912. The remains of a building after a fire at Branstone. Two men stand within the ruins. 1912**

IWCMS.2012.735



**Old Friends and Scenes. An Island cottage scene. An elderly woman gathers water from a stream with a pail as an elderly man looks on. Circa. 1890-1914**

IWCMS.1995.576



***Newport - The High Street. A view from St. James Square, Newport, looking towards the Guildhall. The Isle of Wight Institute is on the right. Circa 1887-1903***

IWCMS.1995.564



***The Sandown Hotel. Children can be seen at the water fountain. Circa. 1890-1914***

IWCMS.2012.48