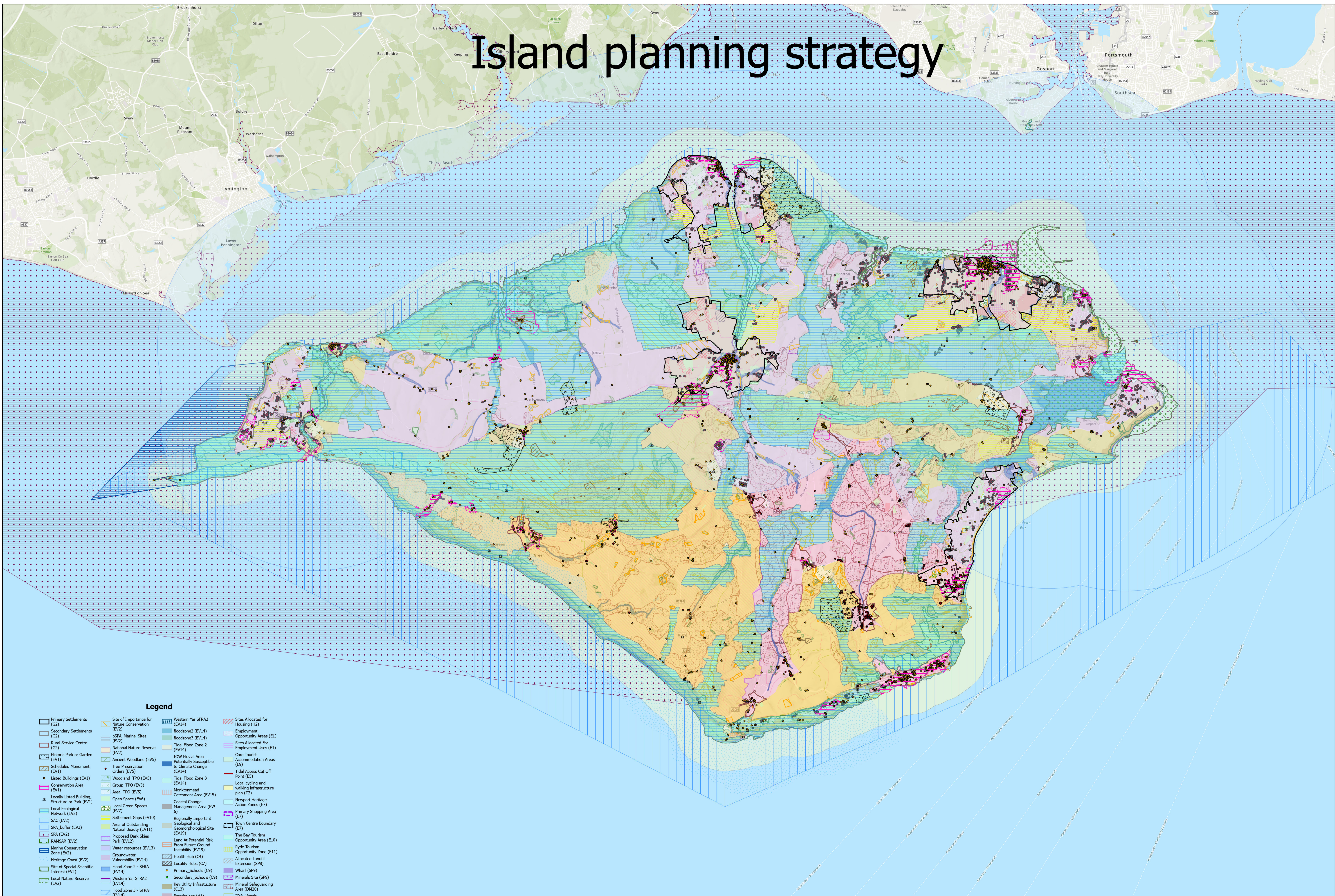


Island planning strategy



Legend

- | | | | |
|--|--|--|--|
| <ul style="list-style-type: none"> Primary Settlements (G2) Secondary Settlements (G2) Rural Service Centre (G2) Historic Park or Garden (EV1) Scheduled Monument (EV1) Listed Buildings (EV1) Conservation Area (EV1) Locally Listed Building, Structure or Park (EV1) Local Ecological Network (EV2) SAC (EV2) SPA Buffer (EV3) SPA (EV2) RAMSAR (EV2) Marine Conservation Zone (EV2) Heritage Coast (EV2) Site of Special Scientific Interest (EV2) Local Nature Reserve (EV2) | <ul style="list-style-type: none"> Site of Importance for Nature Conservation (EV2) gSPN_Marine_Sites (EV2) National Nature Reserve (EV2) Ancient Woodland (EV5) Tree Preservation Orders (EV3) Woodland_TPO (EV5) Group_TPO (EV5) Area_TPO (EV5) Open Space (EV6) Local Green Spaces (EV7) Settlement Gaps (EV10) Area of Outstanding Natural Beauty (EV11) Proposed Dark Skies Park (EV12) Water resources (EV13) Groundwater Vulnerability (EV14) Site of Special Scientific Interest (EV2) Local Nature Reserve (EV2) | <ul style="list-style-type: none"> Western Yar SFRA3 (EV14) floodzone2 (EV14) floodzone3 (EV14) Tidal Flood Zone 2 (EV14) IOW Fluvial Area Potentially Susceptible to Climate Change (EV14) Tidal Flood Zone 3 (EV14) Monktonmead Catchment Area (EV15) Coastal Change Management Area (EV16) Regionally Important Geological and Geomorphological Site (EV19) Land At Potential Risk From Future Ground Instability (EV19) Health Hub (C4) Locality Hubs (C7) Primary_Schools (C9) Secondary_Schools (C9) Key Utility Infrastructure (C13) Permissions (H1) | <ul style="list-style-type: none"> Sites Allocated For Housing (H2) Employment Opportunity Areas (E1) Sites Allocated For Employment Uses (E1) Core Tourist Accommodation Areas (E9) Tidal Access Cut Off Point (E5) Local cycling and walking infrastructure plan (T2) Newport Heritage Action Zones (E7) Primary Shopping Area (E7) Town Centre Boundary (E7) The Bay Tourism Opportunity Area (E10) Ryde Tourism Opportunity Zone (E11) Allocated Landfill Extension (SP8) Wharf (SP9) Minerals Site (SP9) Mineral Safeguarding Area (DM20) IOW_Wards |
|--|--|--|--|