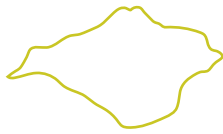




ISLE OF WIGHT



Local Nature Recovery Strategy

STATEMENT OF BIODIVERSITY PRIORITIES

Part 3: Priority Species and Assemblages



www.islandnature.org

Contents

1. Species list – Organised Alphabetically by Common Name	4
1.1. Champion Species.....	6
1.2. Priority Species Listed Alphabetically by Common Name	24
2. Species list – Organised by Assemblage.....	72
2.1. Assemblages	73
2.2. Priority Species Grouped Within Assemblages	88
2.2.1. Trees and Woodland Assemblage.....	88
2.2.2. Chalk Assemblage	93
2.2.3. Heath and Acid Grassland Assemblage.....	97
2.2.4. Lowland Meadows Assemblage.....	100
2.2.5. Bogs Assemblage.....	102
2.2.6. Floodplain Assemblage	104
2.2.7. Rivers Assemblage	108
2.2.8. Farm Mosaic Assemblage	109
2.2.9. Maritime Soft Cliffs Assemblage	112
2.2.10. Beaches, Seafronts and Seashores Assemblage.....	117
2.2.11. Saltmarsh Assemblage.....	121
2.2.12. Lagoons Assemblage	124
2.2.13. Dune and Shingle Assemblage.....	126
2.2.14. Urban Assemblage.....	128



Species, Habitats and Heritage across our 33 parishes. Illustration by Carim Nahaboo.

1. Species list – Organised Alphabetically by Common Name

The list of priority species, and the 14 habitat assemblages presented here are the result of 6 months of data collation and review, working with the IW Local Records Centre, the IW County Recorder network, amateur and professional experts in their fields, and through consultation with national recorder organizations such as the British Lichen Society, the British Mycological Society, the Dipterists Forum and the Marine Life Information Network.

The process of prioritisation has been led by statutory guidance and by local expertise, but it has also sought to recognise and properly consider the opinions and preferences expressed by the general Island public who have engaged with the LNRS process online, in forums and at public events throughout 2024 and 2025. What is evident or used as evidence is not just a matter of science and knowledge but also a matter of the way we see and approach things. This pragmatic approach has been adopted throughout the LNRS process, seeking to effectively balance stakeholder preference and opinion with biological records and landscape ecology.

The purpose of the species list is to refine the definition of priority habitat types by ensuring that different sub-types, communities and transitions are properly represented via key taxa, and that the range of measures proposed for nature recovery are comprehensive and fit for purpose.

The species lists provide two essential additional services to the LNRS. The first is as a monitoring tool, giving projects and programmes, and the LNRS process itself, a menu of indicators with which to chart progress through the first iteration of the strategy and begin to shape the next. The second is as a means of communication, a way of making real the technical ecological content of the strategy through the life of Island wildlife. To help with the latter, each assemblage has within it nominated ‘champions’ that can best carry the key messages about needs and requirements for the rest.

The final list comprises 500 priority species with 167 nominated as ‘Champions’.

Table 1 lists the champion species where there are corresponding priorities and measures.

Table 2 lists all priority species.

Image below: The Needles chalk stacks and lighthouse. Photography by Daneen Cowling.



1.1. Champion Species

Table 1: Champion Species with relevant priorities and measures

Champion Species	Relevant Priorities	Relevant Measure Code(s)
Adder	Enhance and recover calcareous and acid grassland and heath (conservation grasslands)	LGH1.1
Adonis Blue	Enhance and recover calcareous and acid grassland and heath (conservation grasslands)	LGH1.3
Alcathoe Bat	Retain, improve, and extend the network of Island woodland mosaics	TW1.6
Alfken's Mini-miner	Enhance and recover calcareous and acid grassland and heath (conservation grasslands)	LGH1.2
Annual Knewel	Enhance and recover calcareous and acid grassland and heath (conservation grasslands)	LGH1.1
Barn Owl	Apply the Lawton Principles of Bigger, Better, More, Joined-up to the Island	LP1.6
	Retain, improve, and extend the network of Island woodland mosaics	TW1.5
Bastard Toadflax	Enhance and recover calcareous and acid grassland and heath (conservation grasslands)	LGH1.4
Bechstein's bat	Retain, improve, and extend the network of Island woodland mosaics	TW1.1
		TW1.6
		TW1.8

Champion Species	Relevant Priorities	Relevant Measure Code(s)
Bilberry	Recover lost sites in plantations and wooded matrix	LGH3.1
Bitter Vetch	Retain, improve, and extend the network of Island woodland mosaics	TW1.4
Bittern	Improve ecological function, quality and resilience of rivers and their floodplain mosaics	CR1.3
Black-tailed Godwit	Improve the ecological function, resilience and quality of Estuary, Harbour, Transitional Water mosaics	EHT1.3
Black Tooth Fungus	Retain, improve, and extend the network of Island woodland mosaics	TW1.1
Blistered Jelly Lichen	Protect, conserve, and supplement soft cliff habitats	SC1.1
Blue Fleabane	Enhance and recover calcareous and acid grassland and heath (conservation grasslands)	LGH1.7
Bog Pimpernel	Improve soil and water quality	LGH2.2
Bottle Sedge	Improve ecological function, quality and resilience of rivers and their floodplain mosaics	CR1.2
Brackish Water-crowfoot	Protect, manage and conserve scarce coastal habitats with very limited scope for natural spread or replacement	LDS1.1
Dark-bellied Brent Goose	Reduce the impacts of recreational and commercial disturbance to priority habitats and species	EHT2.1

Champion Species	Relevant Priorities	Relevant Measure Code(s)
Bristle Bent	Improve soil and water quality	LGH2.1
Brook Lamprey	Improve ecological function, quality and resilience of rivers and their floodplain mosaics	CR1.4
Brown Hare	Retain, improve, and extend the network of Island woodland mosaics	TW1.9
Bullfinch	Enhance ecological quality and function in urban green, blue and grey infrastructure	UGG1.3
Bullhead	Protect and ensure equitable sharing of water resources between people and wildlife	CR2.1
Bur Chervil	Support vulnerable habitats that have nowhere to go	LDS2.1
Buttoned Snout	Enhance ecological quality and function in urban green and grey infrastructure	UGG1.4
Cat Mint	Apply the Lawton Principles of Bigger, Better, More, Joined-up to the Island	LP1.8
Chaffweed	Enhance and recover calcareous and acid grassland and heath (conservation grasslands)	LGH1.2
Chalkhill Blue	Enhance and recover calcareous and acid grassland and heath (conservation grasslands)	LGH1.1
Chamomile	Restore, improve the condition of, and connect priority lowland meadows sites and fragments	LGH4.1

Champion Species	Relevant Priorities	Relevant Measure Code(s)
Chestnut Click Beetle	Protect, conserve, and supplement soft cliff habitats	SC1.1
Cliff Tiger Beetle	Protect, conserve, and supplement soft cliff habitats	SC1.1
Common Frog	Protect and expand the coverage of the Island's pond network and associated foraging, commuting, shelter and hibernation habitats.	CR6.1
Common Lizard	Enhance ecological quality and function in urban green, blue and grey infrastructure	UGG1.2
Common Scurvy Grass	Improve the ecological function, resilience and quality of Estuary, Harbour, Transitional Water mosaics	EHT1.2
Common Toad	Protect and expand the coverage of the Island's pond network and associated foraging, commuting, shelter and hibernation habitats.	CR6.1
Corn Bunting	Apply the Lawton Principles of Bigger, Better, More, Joined-up to the Island	LP1.4
Cornflower	Apply the Lawton Principles of Bigger, Better, More, Joined-up to the Island	LP1.7
Creeping Forget-me-not	Improve ecological function, quality and resilience of rivers and their floodplain mosaics	CR1.2
Curlew	Improve the ecological function, resilience and quality of Estuary, Harbour, Transitional Water mosaics.	EHT1.2

Champion Species	Relevant Priorities	Relevant Measure Code(s)
Dark Green Fritillary	Recover lost sites in plantations and wooded matrix	LGH3.1
Deadly Nightshade	Apply the Lawton Principles of Bigger, Better, More, Joined-up to the Island	LP1.8
Dodder	Enhance and recover calcareous and acid grassland and heath (conservation grasslands)	LGH1.6
Dormouse	Apply the Lawton Principles of Bigger, Better, More, Joined-up to the Island	LP1.5
		LP1.8
	Retain, improve, and extend the network of Island woodland mosaics	TW1.2
		TW1.1
		TW1.8
Dropwort	Enhance and recover calcareous and acid grassland and heath (conservation grasslands)	LGH1.5
Duncock	Enhance ecological quality and function in urban green and grey infrastructure	UGG1.1
Dusky Cockroach	Protect, conserve, and supplement soft cliff habitats	SC1.1
Dwarf Eelgrass	Protect, conserve, and extend intertidal nursery habitats	BSS2.1
Dwarf Sedge	Improve soil and water quality	LGH2.2
Eelgrass	Protect, conserve, and extend intertidal nursery habitats	BSS2.1

Champion Species	Relevant Priorities	Relevant Measure Code(s)
Early Gentian	Enhance and recover calcareous and acid grassland and heath (conservation grasslands)	LGH1.4
European Eel (part of Anadromous 4)	Improve ecological function, quality and resilience of rivers and their floodplain mosaics	CR1.4
European Flat Oyster	Integrate habitat creation on hard infrastructure to support species threatened by coastal squeeze	BSS3.1
	Improve the ecological function, resilience and quality of Estuary, Harbour, Transitional Water mosaics	EHT1.1
European Sting Ray	Protect, conserve, and extend intertidal nursery habitats	BSS2.1
Field Cow-wheat	Apply the Lawton Principles of Bigger, Better, More, Joined-up to the Island	LP1.6
Field Hornwort	Apply the Lawton Principles of Bigger, Better, More, Joined-up to the Island	LP1.4
Floerke's Phacelia	Apply the Lawton Principles of Bigger, Better, More, Joined-up to the Island	LP1.7
Frog Orchid	Enhance and recover calcareous and acid grassland and heath (conservation grasslands)	LGH1.1
		LGH1.4
Garden Tiger	Enhance ecological quality and function in urban green, blue and grey infrastructure	UGG1.3

Champion Species	Relevant Priorities	Relevant Measure Code(s)
Gilded Bolete	Retain, improve, and extend the network of Island woodland mosaics	TW1.1
Glanville Fritillary	Protect, conserve, and supplement soft cliff habitats	SC1.1
Glow Worm	Restore, improve the condition of, and connect priority lowland meadow sites and fragments	LGH4.2
Golden-ringed Dragonfly	Protect and ensure equitable sharing of water resources between people and wildlife	CR2.1
Grass Snake	Enhance ecological quality and function in urban green, blue and grey infrastructure	UGG1.3
Grayling	Enhance and recover calcareous and acid grassland and heath (conservation grasslands)	LGH1.1
Great-crested Newt	Protect and expand the coverage of the Island's pond network and associated foraging, commuting, shelter and hibernation habitats.	CR6.1
Greater Horseshoe Bat	Retain, improve, and extend the network of Island woodland mosaics	TW1.6
Greenfinch	Enhance ecological quality and function in urban green, blue and grey infrastructure	UGG1.3
Greenweed Pygmy Moth	Restore, improve the condition of, and connect priority lowland meadow sites and fragments	LGH4.2

Champion Species	Relevant Priorities	Relevant Measure Code(s)
Grey Long-eared Bat	Enhance ecological quality and function in urban green and grey infrastructure	UGG1.4
	Retain, improve, and extend the network of Island woodland mosaics	TW1.6
Grey Tooth Fungus	Retain, improve, and extend the network of Island woodland mosaics	TW1.1
Grey Partridge	Apply the Lawton Principles of Bigger, Better, More, Joined-up to the Island	LP1.4
Grizzled Skipper	Enhance and recover calcareous and acid grassland and heath (conservation grasslands)	LGH1.4
Hairy Dragonfly	Enhance ecological quality and function in urban green, blue and grey infrastructure	UGG1.1
Hairy Rockcress	Enhance and recover calcareous and acid grassland and heath (conservation grasslands)	LGH1.5
Harvest Mouse	Apply the Lawton Principles of Bigger, Better, More, Joined-up to the Island	LP1.5
Heath Dog Violet	Enhance ecological quality and function in urban green, blue and grey infrastructure	UGG1.7
Henbane	Protect, manage and conserve scarce coastal habitats with very limited scope for natural spread or replacement	LDS1.1
Hobby	Retain, improve, and extend the network of Island woodland mosaics	TW1.10

Champion Species	Relevant Priorities	Relevant Measure Code(s)
House Martin	Enhance ecological quality and function in urban green, blue and grey infrastructure	UGG1.6
House Sparrow	Enhance ecological quality and function in urban green, blue and grey infrastructure	UGG1.6
Ivy-leaved Bellflower	Protect, conserve and manage deep peat reserves and their big habitats and headwater stream environments	CR5.1
Isle of Wight Hopper	Support vulnerable habitats that have nowhere to go	LDS2.1
Juniper	Increase the number of ecologically useful trees outside woodland settings	TW2.1
Kingfisher	Improve ecological function, quality and resilience of rivers and their floodplain mosaics	CR1.5
Leisler's Bat	Retain, improve, and extend the network of Island woodland mosaics	TW1.2 TW1.6
Linnet	Apply the Lawton Principles of Bigger, Better, More, Joined-up to the Island	LP1.4
Little Grebe	Improve the ecological function, resilience and quality of Estuary, Harbour, Transitional Water mosaics	EHT1.3
Little Ringed Plover	Improve ecological function, quality and resilience of rivers and their floodplain mosaics	CR1.1

Champion Species	Relevant Priorities	Relevant Measure Code(s)
Looping Snail	Improve the ecological function, resilience and quality of Estuary, Harbour, Transitional Water mosaics	EHT1.2
Lousewort	Enhance ecological quality and function in urban green, blue and grey infrastructure	UGG1.7
Marsh Arrowgrass	Improve ecological function, quality and resilience of rivers and their floodplain mosaics	CR1.2
Marsh Cinquefoil	Improve ecological function, quality and resilience of rivers and their floodplain mosaics	CR1.1
Marsh Fern	Improve ecological function, quality and resilience of rivers and their floodplain mosaics	CR1.3
Marsh Harrier	Improve ecological function, quality and resilience of rivers and their floodplain mosaics	CR1.3
Meadow Thistle	Recover lost sites in plantations and wooded matrix	LGH3.1
	Retain, improve, and extend the network of Island woodland mosaics	TW1.9
Mistle Thrush	Increase the number of ecologically useful trees outside woodland settings	TW2.2
Mottled Grasshopper	Enhance and recover calcareous and acid grassland and heath (conservation grasslands)	LGH1.6

Champion Species	Relevant Priorities	Relevant Measure Code(s)
Mousetail	Apply the Lawton Principles of Bigger, Better, More, Joined-up to the Island	LP1.7
Narrow-leaved Lungwort	Retain, improve, and extend the network of Island woodland mosaics	TW1.1
Nathusius's Pipistrelle	Retain, improve, and extend the network of Island woodland mosaics	TW1.6
Nightingale	Retain, improve, and extend the network of Island woodland mosaics	TW1.1 TW1.10
Nightjar	Retain, improve, and extend the network of Island woodland mosaics	TW1.10
Nit Grass	Enhance and recover calcareous and acid grassland and heath (conservation grasslands)	LGH1.6
Oldrose Bolete	Retain, improve, and extend the network of Island woodland mosaics	TW1.1
Olive Earthtongue	Restore, improve the condition of, and connect priority lowland meadows sites and fragments	LGH4.1
Oystercatcher	Improve the ecological function, resilience and quality of Estuary, Harbour, Transitional Water mosaics	EHT1.1
Pale Butterwort	Protect, conserve and manage deep peat reserves and their big habitats and headwater stream environments	CR5.1
Peacock's Tail	Integrate habitat creation on hard infrastructure to support species threatened by coastal squeeze	BSS3.1

Champion Species	Relevant Priorities	Relevant Measure Code(s)
Pearl-bordered Fritillary	Retain, improve, and extend the network of Island woodland mosaics	TW1.10
Pillwort	Enhance and recover calcareous and acid grassland and heath (conservation grasslands) Recover lost sites in plantations and wooded matrix	LGH1.6 LGH3.1
Pink Ballerina	Restore, improve the condition of, and connect priority lowland meadows sites and fragments	LGH4.1
Potter Flower Bee	Enhance and recover calcareous and acid grassland and heath (conservation grasslands)	LGH1.1
Red Bog Moss	Protect, conserve and manage deep peat reserves and their big habitats and headwater stream environments	CR5.1
Reddish Buff	Retain, improve, and extend the network of Island woodland mosaics Retain, improve, and extend the network of Island woodland mosaics	TW1.10 TW1.2
Redshank	Improve catchment water quality	CR3.1
Red Squirrel	Retain, improve, and extend the network of Island woodland mosaics	TW1.1 TW1.8

Champion Species	Relevant Priorities	Relevant Measure Code(s)
Ringed Plover	Protect and conserve species vulnerable to recreational disturbance	BSS1.1
		BSS1.2
	Reduce the impacts of recreational and commercial disturbance to priority habitats and species	EHT2.1
River Lamprey (part of Anadromous 4)	Improve ecological function, quality and resilience of rivers and their floodplain mosaics	CR1.6
Round-leaved Sundew	Protect, conserve and manage deep peat reserves and their big habitats and headwater stream environments	CR5.1
Rosy Wave	Improve the ecological function, resilience and quality of Estuary, Harbour, Transitional Water mosaics	EHT1.2
Rough Poppy	Apply the Lawton Principles of Bigger, Better, More, Joined-up to the Island	LP1.6
Ruddy Carpet	Improve soil and water quality	LGH2.1
Sanderling	Protect and conserve species vulnerable to recreational disturbance	BSS1.1
		BSS1.2
Sandwich Tern	Protect and conserve species vulnerable to recreational disturbance	BSS1.2
Satan's Bolete	Retain, improve, and extend the network of Island woodland mosaics	TW1.1
Scarce Blue-tailed Damselfly	Protect, conserve, and supplement soft cliff habitats	SC1.1

Champion Species	Relevant Priorities	Relevant Measure Code(s)
Scarce Knapweed Fly	Enhance and recover calcareous and acid grassland and heath (conservation grasslands)	LGH1.6
Sea Heath	Improve the ecological function, resilience and quality of Estuary, Harbour, Transitional Water mosaics	EHT1.2
Sea Lamprey (part of Anadromous 4)	Improve ecological function, quality and resilience of rivers and their floodplain mosaics	CR1.5
Sea Trout (part of Anadromous 4)	Improve ecological function, quality and resilience of rivers and their floodplain mosaics	CR1.7
	Protecting and enhancing the health of chalk streams	CR4.1
Serotine	Retain, improve, and extend the network of Island woodland mosaics	TW1.6
	Increase the number of ecologically useful trees outside woodland settings	TW2.2
	Enhance ecological quality and function in urban green, blue and grey infrastructure	UGG1.6
Shaggy Mouse-ear Hawkweed	Enhance and recover calcareous and acid grassland and heath (conservation grasslands)	LGH1.2
Short-snouted Seahorse	Protect, conserve, and extend intertidal nursery habitats	BSS2.1

Champion Species	Relevant Priorities	Relevant Measure Code(s)
Slate Bolete	Retain, improve, and extend the network of Island woodland mosaics	TW1.1
Skylark	Apply the Lawton Principles of Bigger, Better, More, Joined-up to the Island	LP1.4
	Retain, improve, and extend the network of Island woodland mosaics	TW1.9
Slender Hares-ear	Improve the ecological function, resilience and quality of Estuary, Harbour, Transitional Water mosaics	EHT1.2
Small Scabious Mining Bee	Enhance and recover calcareous and acid grassland and heath (conservation grasslands)	LGH1.7
Sneezewort	Retain, improve, and extend the network of Island woodland mosaics	TW1.10
Song Thrush	Enhance ecological quality and function in urban green, blue and grey infrastructure	UGG1.1
Spotted Flycatcher	Enhance ecological quality and function in urban green, blue and grey infrastructure	UGG1.1
Spreading Hedge Parsley	Apply the Lawton Principles of Bigger, Better, More, Joined-up to the Island	LP1.6
Stag Beetle	Increase the number of ecologically useful trees outside woodland settings	TW2.2
Starlet Sea Anemone	Protect, manage and conserve scarce coastal habitats with very limited scope for natural spread or replacement	LDS1.1

Champion Species	Relevant Priorities	Relevant Measure Code(s)
Starling	Enhance ecological quality and function in urban green, blue and grey infrastructure	UGG1.6
Swift	Enhance ecological quality and function in urban green, blue and grey infrastructure	UGG1.6
Tawny Cockroach	Enhance ecological quality and function in urban green, blue and grey infrastructure	UGG1.5
Teal	Improve ecological function, quality and resilience of rivers and their floodplain mosaics	CR1.1
Tentacled Lagoon Worm	Protect, manage and conserve scarce coastal habitats with very limited scope for natural spread or replacement	LDS1.1
Tiered Tooth Fungus	Retain, improve, and extend the network of Island woodland mosaics	TW1.1
Turtle Dove	Retain, improve, and extend the network of Island woodland mosaics	TW1.5
Venus's Looking-glass	Apply the Lawton Principles of Bigger, Better, More, Joined-up to the Island	LP1.7
Wall Butterfly	Enhance ecological quality and function in urban green, blue and grey infrastructure	UGG1.2
Water Dock	Improve ecological function, quality and resilience of rivers and their floodplain mosaics	CR1.1

Champion Species	Relevant Priorities	Relevant Measure Code(s)
Water Vole	Improve ecological function, quality and resilience of rivers and their floodplain mosaics	CR1.5
Waxcap fungi	Restore, improve the condition of, and connect priority lowland meadows sites and fragments	LGH4.2
West European Hedgehog	Apply the Lawton Principles of Bigger, Better, More, Joined-up to the Island	LP1.8
	Enhance ecological quality and function in urban green, blue and grey infrastructure	UGG1.1
Western Barbastelle bat	Apply the Lawton Principles of Bigger, Better, More, Joined-up to the Island	LP1.9
	Retain, improve, and extend the network of Island woodland mosaics	TW1.1
		TW1.6
		TW1.8
White Admiral	Retain, improve, and extend the network of Island woodland mosaics	TW1.1
White Helleborine	Retain, improve, and extend the network of Island woodland mosaics	TW1.1
		TW1.9
White-letter Hairstreak	Increase the number of ecologically useful trees outside woodland settings	TW2.1
Willow Warbler	Apply the Lawton Principles of Bigger, Better, More, Joined-up to the Island	LP1.8
Wood Calamint	Retain, improve, and extend the network of Island woodland mosaics	TW1.1

Champion Species	Relevant Priorities	Relevant Measure Code(s)
Wood Cricket	Retain, improve, and extend the network of Island woodland mosaics	TW1.4
Wood Horsetail	Retain, improve, and extend the network of Island woodland mosaics	TW1.3
Woodcock	Retain, improve, and extend the network of Island woodland mosaics	TW1.3
Yarrow Broomrape	Enhance ecological quality and function in urban green, blue and grey infrastructure	UGG1.2
Yellowhammer	Apply the Lawton Principles of Bigger, Better, More, Joined-up to the Island	LP1.6
	Retain, improve, and extend the network of Island woodland mosaics	TW1.9
Zoned Tooth Fungus	Retain, improve, and extend the network of Island woodland mosaics	TW1.1

Illustration: Water Vole (*Arvicola terrestris*)

1.2. Priority Species Listed Alphabetically by Common Name

Table 2: All Priority Species

Common Name	Scientific Name	Assemblage	Taxon
A Broad-nosed Weevil	<i>Cathormiocerus socius</i>	Maritime Soft Cliffs	Beetles
A Broad-nosed Weevil	<i>Otiorhynchus ligustici</i>	Maritime Soft Cliffs	Beetles
A Bryophyte	<i>Crossidium squamiferum</i>	Maritime Soft Cliffs	Mosses
A Click Beetle	<i>Agriotes sordidus</i>	Maritime Soft Cliffs	Beetles
A Cocoon Weevil	<i>Hypera ononidis</i>	Maritime Soft Cliffs	Beetles
A Crane Fly	<i>Dicranomyia goritiensis</i>	Maritime Soft Cliffs	Beetles
A Crane Fly	<i>Dicranomyia lackschewitzi</i>	Maritime Soft Cliffs	Beetles
A Demosponge	<i>Dercitus bucklandi</i>	Beaches, Seafronts and Seashores	Sponges
A Demosponge	<i>Stelletta grubii</i>	Beaches, Seafronts and Seashores	Sponges
A Dot Lichen	<i>Bacidia incompta</i>	Trees and Woodland	Lichens
A False Click Beetle	<i>Microhagus pygmaeus</i>	Trees and Woodland	Beetles
A Flower Weevil	<i>Baris analis</i>	Maritime Soft Cliffs	Beetles
A Fruit Fly	<i>Trupanea amoena</i>	Maritime Soft Cliffs	Flies
A Gold Dust Lichen	<i>Chrysothrix chrysophthalma</i>	Trees and Woodland	Lichens
A Ground Beetle	<i>Bembidion andreae</i>	Maritime Soft Cliffs	Beetles
A Ground Beetle	<i>Elaphrus uliginosus</i>	Maritime Soft Cliffs	Beetles
A Ground Beetle	<i>Ophonus cordatus</i>	Maritime Soft Cliffs	Beetles
A Ground Beetle	<i>Ophonus parallelus</i>	Maritime Soft Cliffs	Beetles

Common Name	Scientific Name	Assemblage	Taxon
A Ground Beetle	<i>Philorhizus vectensis</i>	Maritime Soft Cliffs	Beetles
A Ground Beetle	<i>Polistichus connexus</i>	Maritime Soft Cliffs	Beetles
A Ground Bug	<i>Drymus latus</i>	Heath and Acid Grassland	True Bugs
A Ground Spider	<i>Callilepis nocturna</i>	Maritime Soft Cliffs	Spiders
A Hoverfly	<i>Cheilosia barbata</i>	Trees and Woodland	Flies
A Lichen	<i>Cryptolechia carneolutea</i>	Maritime Soft Cliffs	Lichens
A Lichen	<i>Enterographa soorediata</i>	Trees and Woodland	Lichens
A Lichen	<i>Wadeana dendrographa</i>	Trees and Woodland	Lichens
A Moth	<i>Mecyna flavalis flaviculis</i>	Chalk	Moths
A Pear-shaped Weevil	<i>Apion matricela</i>	Dune Shingle	Beetles
A Plant Bug	<i>Myrmecoris gracilis</i>	Maritime Soft Cliffs	True Bugs
A Plant Bug	<i>Trigonotylus psammaecolor</i>	Dune Shingle	True Bugs
A Pollen Beetle	<i>Meligethes bidentatus</i>	Lowland Meadow	Beetles
A Ripple Bug	<i>Microvelia pygmaea</i>	Floodplain	True Bugs
A Rosette Lichen	<i>Physcia clementei</i>	Chalk	Lichens
A Rove Beetle	<i>Aleochara obscurella</i>	Saltmarsh	Beetles
A Rove Beetle	<i>Halobrecta princeps</i>	Maritime Soft Cliffs	Beetles
A Rove Beetle	<i>Medon pocifer</i>	Maritime Soft Cliffs	Beetles
A Rove Beetle	<i>Medon ripicola</i>	Dune Shingle	Beetles
A Seed Bug	<i>Heterogaster artemisiae</i>	Chalk	True Bugs
A Shield / Rim Lichen	<i>Squamarina cartilaginea</i>	Chalk	Lichens

Common Name	Scientific Name	Assemblage	Taxon
A Silken Fungus Beetle	<i>Telmatophilus brevicollis</i>	Floodplain	Beetles
A Spiny-legged Rove Beetle	<i>Bledius crassicollis</i>	Maritime Soft Cliffs	Beetles
A Spiny-legged Rove Beetle	<i>Thinobius brevipennis</i>	Maritime Soft Cliffs	Beetles
A Spiny-legged Rove Beetle	<i>Oxytelus piceus</i>	Floodplain	Beetles
A Square-headed Wasp	<i>Tachysphex unicolor sens. str.</i>	Maritime Soft Cliffs	Wasps
A Stalked Jellyfish	<i>Haliclystus auricula</i>	Beaches, Seafronts and Seashores	Jellyfish
A Stalked Jellyfish	<i>Calvadosia campanulata</i>	Beaches, Seafronts and Seashores	Jellyfish
A Stiletto Fly	<i>Thereva fulva</i>	Dune Shingle	Flies
A Typical Leafhopper	<i>Aphrodes aestuarinus</i>	Saltmarsh	True Bugs
A Typical Leafhopper	<i>Macrosteles fieberi</i>	Saltmarsh	True Bugs
A Typical Leafhopper	<i>Macrosteles sordidipennis</i>	Saltmarsh	True Bugs
A Variegated Mud-loving Beetle	<i>Heterocerus fuscus</i>	Maritime Soft Cliffs	Beetles
A Water Scavenger Beetle	<i>Paracymus aeneus</i>	Lagoons	Beetles
A Wolf Spider	<i>Aulonia albimana</i>	Lowland Meadow	Spiders
Adder	<i>Vipera berus</i>	Chalk	Reptiles
Adonis Blue	<i>Polyommatus bellargus</i>	Chalk	Butterflies
Alcathoe Bat	<i>Myotis alcathoe</i>	Trees and Woodland	Bats
Alfken's Mini-miner	<i>Andrena alfkenella</i>	Chalk	Bees
Alternate Water Milfoil	<i>Myriophyllum alterniflorum</i>	Floodplain	Flowering Plants
An Aphid Wasp	<i>Mimumesa atratina</i>	Maritime Soft Cliffs	Wasps
An Aphid Wasp	<i>Mimumesa unicolor</i>	Maritime Soft Cliffs	Wasps

Common Name	Scientific Name	Assemblage	Taxon
Annual Knawel	<i>Scleranthus annuus</i>	Heath and Acid Grassland	Flowering Plants
Autumn Squill	<i>Scilla autumnalis</i>	Dune Shingle	Flowering Plants
Barn Owl	<i>Tyto alba</i>	Farm Mosaic	Birds
Bastard Toadflax	<i>Thesium humifusum</i>	Chalk	Flowering Plants
Bastard Toadflax Rust	<i>Puccinia thesii</i>	Chalk	Fungi
Bastard-toadflax Bug	<i>Canthophorus impressus</i>	Chalk	True Bugs
Beaked Tasselweed	<i>Ruppia maritima</i>	Lagoons	Flowering Plants
Bearded Amanita	<i>Amanita ovoidea</i>	Trees and Woodland	Fungi
Bearded Fescue	<i>Vulpia ciliata subsp. ambigua</i>	Dune Shingle	Flowering Plants
Beautiful Demoiselle	<i>Calopteryx virgo</i>	Floodplain	Dragonflies and Damselflies
Bechstein's Bat	<i>Myotis bechsteinii</i>	Trees and Woodland	Bats
Beric Beard-moss	<i>Leptobarbula berica</i>	Urban	Mosses
Bilberry	<i>Vaccinium myrtillus</i>	Heath and Acid Grassland	Flowering Plants
Birds-foot Wing-moss	<i>Pterogonium gracile</i>	Maritime Soft Cliffs	Mosses
Bird's-nest Orchid	<i>Neottia nidus-avis</i>	Trees and Woodland	Flowering Plants
Bittern	<i>Botaurus stellaris</i>	Floodplain	Birds
Bitter-vetch	<i>Lathyrus linifolius</i>	Trees and Woodland	Flowering Plants
Black Mining Bee	<i>Andrena pilipes sens. str.</i>	Maritime Soft Cliffs	Bees
Black Tooth Fungus	<i>Phellodon niger</i>	Trees and Woodland	Fungi
Blackening Chanterelle	<i>Cantherellus melanoxeros</i>	Trees and Woodland	Fungi
Black-headed Gull	<i>Chroicocephalus ridibundus</i>	Beaches, Seafronts and Seashores	Birds



Common Name	Scientific Name	Assemblage	Taxon
Black-headed Mason-wasp	<i>Odynerus melanocephalus</i>	Maritime Soft Cliffs	Wasps
Black-tailed Godwit	<i>Limosa limosa</i>	Beaches, Seafronts and Seashores	Birds
Blair's Wainscot	<i>Sedina buettneri</i>	Floodplain	Moths
Blistered Jelly Lichen	<i>Collema nigrescens</i>	Maritime Soft Cliffs	Lichens
Blonde Ray	<i>Raja brachyura</i>	Beaches, Seafronts and Seashores	Sharks and Rays
Blue Fleabane	<i>Erigeron acris</i>	Heath and Acid Grassland	Flowering Plants
Blunt-fruited Water Starwort	<i>Callitriche obtusangula</i>	Floodplain	Flowering Plants
Blunt-leaved Pondweed	<i>Potamogeton obtusifolius</i>	Floodplain	Flowering Plants
Bog Apple-moss	<i>Philonotis marchica</i>	Maritime Soft Cliffs	Mosses
Bog Asphodel	<i>Narthecium ossifragum</i>	Bogs	Flowering Plants
Bog Germanderwort	<i>Riccardia latifrons</i>	Bogs	Liverworts
Bog Myrtle	<i>Myrica gale</i>	Bogs	Flowering Plants
Bog Pimpernel	<i>Anagallis tenella</i>	Bogs	Flowering Plants
Bog Pincerwort	<i>Cephalozia macrostachya</i>	Bogs	Liverworts
Bog Pondweed	<i>Potamogeton polygonifolius</i>	Bogs	Flowering Plants
Bogbean	<i>Menyanthes trifoliata</i>	Floodplain	Flowering Plants
Bottle Sedge	<i>Carex rostrata</i>	Floodplain	Flowering Plants
Brackish Water-crowfoot	<i>Ranunculus baudotii</i>	Lagoons	Flowering Plants
Brighton Sober	<i>Aproaerema vinella</i>	Lowland Meadow	Moths
Bristle Bent	<i>Agrostis curtisii</i>	Heath and Acid Grassland	Flowering Plants

Common Name	Scientific Name	Assemblage	Taxon
British Whorl Snail	<i>Truncatellina callicratis</i>	Maritime Soft Cliffs	Molluscs
Broad Scalewort	<i>Porella obtusata</i>	Maritime Soft Cliffs	Liverworts
Broad-faced Mining Bee	<i>Andrena proxima</i>	Maritime Soft Cliffs	Bees
Broad-fruited Cornsalad	<i>Valerianella ramosa</i>	Farm Mosaic	Flowering Plants
Broad-leaved Cudweed	<i>Filago pyramidata</i>	Chalk	Flowering Plants
Broad-leaved Helleborine	<i>Epipactis helleborine</i>	Maritime Soft Cliffs	Flowering Plants
Broad-nosed Pipefish	<i>Syngnathus typhle</i>	Beaches, Seafronts and Seashores	Fish
Brook Lamprey	<i>Lampetra planeri</i>	Rivers	Fish
Brown Hare	<i>Lepus europaeus</i>	Farm Mosaic	Mammals
Bulbous Foxtail	<i>Alopecurus bulbosus</i>	Saltmarsh	Flowering Plants
Bullfinch	<i>Pyrrhula pyrrhula</i>	Urban	Birds
Bullhead	<i>Cottus gobio</i>	Rivers	Fish
Bur Chervil	<i>Anthriscus caucalis</i>	Dune Shingle	Flowering
Buttoned Snout	<i>Hypena rostralis</i>	Urban	Moths
Canary Thread-moss	<i>Bryum canariense</i>	Maritime Soft Cliffs	Mosses
Carnation Sedge	<i>Carex panicea</i>	Floodplain	Flowering Plants
Carrot Mining Bee	<i>Andrena nitidiuscula</i>	Maritime Soft Cliffs	Bees
Cat Mint	<i>Nepeta cataria</i>	Trees and Woodland	Flowering Plants
Cauliflower Fungus	<i>Sparassis brevipes</i>	Trees and Woodland	Fungi
Ceperoi's Groundhopper	<i>Tetrix ceperoi</i>	Maritime Soft Cliffs	Grasshoppers and Crickets
Chaffweed	<i>Centunculus minimus</i>	Heath and Acid Grassland	Flowering Plants

Common Name	Scientific Name	Assemblage	Taxon
Chalk Carpet	<i>Scotopteryx bipunctaria cretata</i>	Chalk	Moths
Chalk Hill Blue	<i>Polyommatus coridon</i>	Chalk	Butterflies
Chalk Milkwort	<i>Polygala calcarea</i>	Chalk	Flowering Plants
Chalk Rock-bristle	<i>Seligeria calcarea</i>	Chalk	Mosses
Chalk Threadwort	<i>Cephaloziella baumgartneri</i>	Maritime Soft Cliffs	Liverworts
Chalk-hill Lance-Wing	<i>Epermenia insecurella</i>	Chalk	Moths
Chamomile	<i>Chamaemelum nobile</i>	Lowland Meadow	Flowering Plants
Chestnut Click Beetle	<i>Anostirus castaneus</i>	Maritime Soft Cliffs	Beetles
Chine Beetle	<i>Drypta dentata</i>	Maritime Soft Cliffs	Beetles
Cliff Furrow Bee	<i>Lasioglossum angusticeps</i>	Maritime Soft Cliffs	Bees
Cliff Stiletto Fly	<i>Thereva strigata</i>	Chalk	Flies
Cliff Tiger Beetle	<i>Cylindera germanica</i>	Maritime Soft Cliffs	Beetles
Clustered Clover	<i>Trifolium glomeratum</i>	Heath and Acid Grassland	Flowering Plants
Colin's Saw-wort Fly	<i>Terellia vectensis</i>	Lowland Meadow	Flies
Common Cottongrass	<i>Eriophorum angustifolium</i>	Bogs	Flowering Plants
Common Cow-wheat	<i>Melampyrum pratense</i>	Trees and Woodland	Flowering Plants
Common Frog	<i>Rana temporaria</i>	Urban	Amphibians
Common Lizard	<i>Zootoca vivipara</i>	Urban	Reptiles
Common Scurvy-grass	<i>Cochlearia officinalis</i>	Saltmarsh	Flowering Plants
Common Seal	<i>Phoca vitulina</i>	Beaches, Seafronts and Seashores	Mammals
Common Starling	<i>Sturnus vulgaris</i>	Urban	Birds



Common Name	Scientific Name	Assemblage	Taxon
Common Tern	<i>Sterna hirundo</i>	Beaches, Seafronts and Seashores	Birds
Common Toad	<i>Bufo bufo</i>	Urban	Amphibians
Constricted Feather-moss	<i>Hygroamblystegium humile</i>	Floodplain	Mosses
Corn Bunting	<i>Emberiza calandra calandra</i>	Farm Mosaic	Birds
Corn Marigold	<i>Glebionis segetum</i>	Farm Mosaic	Flowering Plants
Cornflower	<i>Centaurea cyanus</i>	Farm Mosaic	Flowering Plants
Creeping Forget-me-not	<i>Myosotis secunda</i>	Floodplain	Flowering Plants
Creeping Yellowcress	<i>Rorippa sylvestris</i>	Urban	Flowering Plants
Crescent Dart	<i>Agrotis trux</i>	Maritime Soft Cliffs	Moths
Cross-leaved Heath	<i>Erica tetralix</i>	Bogs	Flowering Plants
Curlew	<i>Numenius arquata</i>	Beaches, Seafronts and Seashores	Birds
Currant Clearwing	<i>Synanthedon tipuliformis</i>	Urban	Moths
Curve-stalked Feather-moss	<i>Rhynchostegiella curviseta</i>	Maritime Soft Cliffs	Mosses
Cyperus Sedge	<i>Carex pseudocyperus</i>	Floodplain	Flowering Plants
Dark Green Fritillary	<i>Argynnis aglaja</i>	Chalk	Butterflies
Dark-bellied Brent Goose	<i>Branta bernicla bernicla</i>	Beaches, Seafronts and Seashores	Birds
Dartford Warbler	<i>Curruca undata</i>	Chalk	Birds
Deadly Nightshade	<i>Atropa belladonna</i>	Trees and Woodland	Flowering Plants
Dense-flowered Fumitory	<i>Fumaria densiflora</i>	Farm Mosaic	Flowering Plants
Dew Moth	<i>Setina irrorella</i>	Chalk	Moths
Dodder	<i>Cuscuta epithymum</i>	Heath and Acid Grassland	Flowering Plants



Common Name	Scientific Name	Assemblage	Taxon
Dotted Hornwort	<i>Anthoceros punctatus</i>	Maritime Soft Cliffs	Hornworts
Dropwort	<i>Filipendula vulgaris</i>	Chalk	Flowering Plants
Dunlin	<i>Calidris alpina</i>	Beaches, Seafronts and Seashores	Birds
Dunnock	<i>Prunella modularis</i>	Urban	Birds
Dusky Cockroach	<i>Ectobius lapponicus</i>	Maritime Soft Cliffs	Cockroaches
Dwarf Eelgrass	<i>Zostera noltei</i>	Beaches, Seafronts and Seashores	Flowering Plants
Dwarf Mouse-ear	<i>Cerastium pumilum</i>	Chalk	Flowering Plants
Dwarf Sedge	<i>Carex humilis</i>	Chalk	Flowering Plants
Early Gentian	<i>Gentianella anglica</i>	Chalk	Flowering Plants
Early Spider Orchid	<i>Ophrys sphegodes</i>	Chalk	Flowering Plants
Eelgrass	<i>Zostera marina</i>	Beaches, Seafronts and Seashores	Flowering Plants
European Eel	<i>Anguilla anguilla</i>	Rivers	Fish
European Flat Oyster	<i>Ostrea edulis</i>	Beaches, Seafronts and Seashores	Molluscs
European Stingray	<i>Dasyatis pastinaca</i>	Beaches, Seafronts and Seashores	Sharks and Rays
European Water Vole	<i>Arvicola terrestris</i>	Rivers	Mammals
Fat Duckweed	<i>Lemna gibba</i>	Floodplain	Flowering Plants
Feathered Brindle	<i>Aporophyla australis pascuea</i>	Maritime Soft Cliffs	Moths
Feathery Bog-moss	<i>Sphagnum cuspidatum</i>	Bogs	Mosses
Few-flowered Fumitory	<i>Fumaria vaillantii</i>	Farm Mosaic	Flowering Plants
Field Cow-wheat	<i>Melampyrum arvense</i>	Farm Mosaic	Flowering Plants
Field Cricket	<i>Gryllus campestris</i>	Chalk	Grasshoppers and Crickets

Common Name	Scientific Name	Assemblage	Taxon
Field Garlic	<i>Allium oleraceum</i>	Chalk	Flowering
Field Hornwort	<i>Anthoceros agrestis</i>	Farm Mosaic	Hornworts
Fine-leaved Fumitory	<i>Fumaria parviflora</i>	Farm Mosaic	Flowering Plants
Flat-topped Bog-moss	<i>Sphagnum fallax</i>	Bogs	Mosses
Flea Sedge	<i>Carex pulicaris</i>	Heath and Acid Grassland	Flowering Plants
Floating Club-rush	<i>Eleogiton fluitans</i>	Floodplain	Flowering Plants
Floerke's Phascum	<i>Microbryum floerkeanum</i>	Farm Mosaic	Mosses
Foxtail Stonewort	<i>Lamprothamnium papulosum</i>	Lagoons	Green Algae
Frog Orchid	<i>Coeloglossum viride</i>	Chalk	Flowering Plants
Garden Tiger	<i>Arctia caja</i>	Urban	Moths
Gilded Bolete	<i>Aureoboletus gentilis</i>	Trees and Woodland	Fungi
Ginger Anemone	<i>Isozoanthus sulcatus</i>	Beaches, Seafronts and Seashores	Sea Anemones
Glanville Fritillary	<i>Melitaea cinxia</i>	Maritime Soft Cliffs	Butterflies
Glow Worm	<i>Lampyris noctiluca</i>	Lowland Meadow	Beetles
Golden Samphire Gall-fly	<i>Myopites eximius</i>	Saltmarsh	Flies
Golden-eye Lichen	<i>Teloschistes chrysophthalmus</i>	Chalk	Lichens
Golden-ringed Dragonfly	<i>Cordulegaster boltonii</i>	Floodplain	Dragonflies and Damselflies
Goldenrod	<i>Solidago virgaurea</i>	Trees and Woodland	Flowering Plants
Gorse Knot-horn	<i>Pempelia genistella</i>	Maritime Soft Cliffs	Moths
Grass Snake	<i>Natrix helvetica</i>	Urban	Reptiles
Grayling	<i>Hipparchia semele</i>	Chalk	Butterflies

Common Name	Scientific Name	Assemblage	Taxon
Great Black-backed Gull	<i>Larus marinus</i>	Urban	Birds
Great Crested Newt	<i>Triturus cristatus</i>	Urban	Amphibians
Greater Broomrape	<i>Orobanche rapum-genistae</i>	Trees and Woodland	Flowering Plants
Greater Butterfly Orchid	<i>Platanthera chlorantha</i>	Trees and Woodland	Flowering Plants
Greater Duckweed	<i>Spirodela polyrhiza</i>	Floodplain	Flowering Plants
Greater Horseshoe Bat	<i>Rhinolophus ferrumequinum</i>	Urban	Bats
Greater Spearwort	<i>Ranunculus lingua</i>	Floodplain	Flowering Plants
Green Blackwort	<i>Southbya nigrella</i>	Maritime Soft Cliffs	Liverworts
Green Field Speedwell	<i>Veronica agrestis</i>	Farm Mosaic	Flowering Plants
Green Hellebore	<i>Helleborus viridis</i>	Trees and Woodland	Flowering Plants
Greenfinch	<i>Chloris chloris</i>	Urban	Birds
Green-flowered Helleborine	<i>Epipactis phyllanthes</i>	Trees and Woodland	Flowering Plants
Greenweed Flat-body Moth	<i>Agonopterix atomella</i>	Lowland Meadow	Moths
Greenweed Pigmy Moth	<i>Trifurcula beirnei</i>	Lowland Meadow	Moths
Grey Bush-cricket	<i>Platycleis albopunctata</i>	Maritime Soft Cliffs	Grasshoppers and Crickets
Grey Long-eared Bat	<i>Plecotus austriacus</i>	Urban	Bats
Grey Partridge	<i>Perdix perdix</i>	Farm Mosaic	Birds
Grey Seal	<i>Halichoerus grypus</i>	Beaches, Seafronts and Seashores	Mammals
Grey Tooth Fungus	<i>Phellodon melaleucus</i>	Trees and Woodland	Fungi
Grizzled Skipper	<i>Pyrgus malvae</i>	Chalk	Butterflies
Hairy Dragonfly	<i>Brachytron pratense</i>	Floodplain	Dragonflies and Damselflies

Common Name	Scientific Name	Assemblage	Taxon
Hairy Rockcress	<i>Arabis hirsuta</i>	Chalk	Flowering Plants
Hairy-fruited Cornsalad	<i>Valerianella eriocarpa</i>	Chalk	Flowering Plants
Hampe's Threadwort	<i>Cephaloziella hampeana</i>	Maritime Soft Cliffs	Liverworts
Hard Fern	<i>Blechnum spicant</i>	Trees and Woodland	Ferns
Hard Shield-fern	<i>Polystichum aculeatum</i>	Trees and Woodland	Ferns
Hare's-foot Clover	<i>Trifolium arvense</i>	Dune Shingle	Flowering Plants
Harsh Downy Rose	<i>Rosa tomentosa</i>	Trees and Woodland	Flowering Plants
Harvest Mouse	<i>Micromys minutus</i>	Farm Mosaic	Mammals
Hazel Dormouse	<i>Muscardinus avellanarius</i>	Trees and Woodland	Mammals
Heath Dog Violet	<i>Viola canina</i>	Heath and Acid Grassland	Flowering Plants
Heath Milkwort	<i>Polygala serpyllifolia</i>	Heath and Acid Grassland	Flowering Plants
Heath Pearlwort	<i>Sagina subulata</i>	Heath and Acid Grassland	Flowering Plants
Henbane	<i>Hyoscyamus niger</i>	Dune Shingle	Flowering Plants
Herring Gull	<i>Larus argentatus</i>	Urban	Birds
Hoary Stock	<i>Matthiola incana</i>	Chalk	Flowering Plants
Hobby	<i>Falco subbuteo</i>	Trees and Woodland	Birds
House Martin	<i>Delichon urbicum</i>	Urban	Birds
House Sparrow	<i>Passer domesticus</i>	Urban	Birds
Imperial Anemone	<i>Capnea sanguinea</i>	Beaches, Seafronts and Seashores	Sea Anemones
Ivy-leaved Bellflower	<i>Wahlenbergia hederacea</i>	Bogs	Flowering Plants
Juniper	<i>Juniperus communis</i>	Chalk	Conifers

Common Name	Scientific Name	Assemblage	Taxon
Keeled Skimmer	<i>Orthetrum coerulescens</i>	Maritime Soft Cliffs	Dragonflies and Damselflies
Kingfisher	<i>Alcedo atthis</i>	Rivers	Birds
Knapweed Broomrape	<i>Orobanche elatior</i>	Chalk	Flowering Plants
Lagoon Sand Shrimp	<i>Gammarus insensibilis</i>	Lagoons	Crustaceans
Lapwing	<i>Vanellus vanellus</i>	Floodplain	Birds
Large Gold Case-bearer	<i>Coleophora vibicella</i>	Lowland Meadow	Moths
Latticed Heath	<i>Chiasmia clathrata</i>	Chalk	Moths
Lax-flowered Sea Lavender	<i>Limonium humile</i>	Saltmarsh	Flowering Plants
Lead-coloured Pug	<i>Eupithecia plumbeolata</i>	Trees and Woodland	Moths
Leisler's Bat	<i>Nyctalus leisleri</i>	Trees and Woodland	Bats
Lesne's Earwig	<i>Forficula lesnei</i>	Maritime Soft Cliffs	Earwigs
Lesser Cockroach	<i>Ectobius panzeri</i>	Maritime Soft Cliffs	Cockroaches
Lesser Marshwort	<i>Apium inundatum</i>	Floodplain	Flowering Plants
Lesser Quaking-grass	<i>Briza minor</i>	Heath and Acid Grassland	Flowering Plants
Lesser Striated Feather-moss	<i>Plasteurhynchium striatulum</i>	Urban	Mosses
Lesser Water-parsnip	<i>Berula erecta</i>	Floodplain	Flowering Plants
Lesser Water-plantain	<i>Baldellia ranunculoides</i>	Floodplain	Flowering Plants
Light Orange Underwing	<i>Archiearis notha</i>	Trees and Woodland	Moths
Linnet	<i>Linaria cannabina</i>	Farm Mosaic	Birds
Litmus	<i>Roccella phycopsis</i>	Urban	Lichens
Little Grebe	<i>Tachybaptus ruficollis</i>	Beaches, Seafronts and Seashores	Birds

Common Name	Scientific Name	Assemblage	Taxon
Little Ringed Plover	<i>Charadrius dubius</i>	Floodplain	Birds
Little Tern	<i>Sterna albifrons</i>	Beaches, Seafronts and Seashores	Birds
Lizard Orchid	<i>Himantoglossum hircinum</i>	Urban	Flowering Plants
Long-bracted Sedge	<i>Carex extensa</i>	Saltmarsh	Flowering Plants
Long-horned Cleg	<i>Haematopota grandis</i>	Saltmarsh	Flies
Long-horned Mining Bee	<i>Eucera longicornis</i>	Maritime Soft Cliffs	Bees
Long-stalked Orache	<i>Atriplex longipes</i>	Saltmarsh	Flowering Plants
Long-stalked Yellow Sedge	<i>Carex viridula</i>	Floodplain	Flowering Plants
Looping Snail	<i>Truncatella subcylindrica</i>	Saltmarsh	Molluscs
Long-snouted Seahorse	<i>Hippocampus guttulatus</i>	Beaches, Seafronts and Seashores	Fish
Loose Silky-bent	<i>Apera spica-venti</i>	Farm Mosaic	Flowering Plants
Lousewort	<i>Pedicularis sylvatica</i>	Heath and Acid Grassland	Flowering Plants
Lyme-grass	<i>Leymus arenarius</i>	Dune Shingle	Flowering Plants
MacKay's Pouncewort	<i>Marchesinia mackaii</i>	Maritime Soft Cliffs	Liverworts
Many-stalked Spike-rush	<i>Eleocharis multicaulis</i>	Bogs	Flowering Plants
Marestail	<i>Hippuris vulgaris</i>	Floodplain	Flowering Plants
Marsh Arrowgrass	<i>Triglochin palustre</i>	Floodplain	Flowering Plants
Marsh Cinquefoil	<i>Potentilla palustris</i>	Floodplain	Flowering Plants
Marsh Fern	<i>Thelypteris palustris</i>	Floodplain	Ferns
Marsh Harrier	<i>Circus aeruginosus</i>	Floodplain	Birds
Marsh Helleborine	<i>Epipactis palustris</i>	Maritime Soft Cliffs	Flowering Plants

Common Name	Scientific Name	Assemblage	Taxon
Marsh Oblique-barred	<i>Hyphenodes humidalis</i>	Heath and Acid Grassland	Moths
Marsh Pennywort	<i>Hydrocotyle vulgaris</i>	Floodplain	Flowering Plants
Marsh Valerian	<i>Valeriana dioica</i>	Floodplain	Flowering Plants
Marsh Violet	<i>Viola palustris</i>	Bogs	Flowering Plants
Martin's Ramping-fumitory	<i>Fumaria reuteri</i>	Farm Mosaic	Flowering Plants
Mat-grass	<i>Nardus stricta</i>	Heath and Acid Grassland	Flowering Plants
Meadow Thistle	<i>Cirsium dissectum</i>	Lowland Meadow	Flowering Plants
Mediterranean Gull	<i>Ichthyaelus melanocephalus</i>	Beaches, Seafronts and Seashores	Birds
Mistle Thrush	<i>Turdus viscivorus</i>	Urban	Birds
Mottled Grasshopper	<i>Myrmeleotettix maculatus</i>	Heath and Acid Grassland	Grasshoppers and Crickets
Mousetail	<i>Myosurus minimus</i>	Farm Mosaic	Flowering Plants
Narrow Buckler-fern	<i>Dryopteris carthusiana</i>	Floodplain	Ferns
Narrow-fruited Cornsalad	<i>Valerianella dentata</i>	Farm Mosaic	Flowering Plants
Narrow-leaved Lungwort	<i>Pulmonaria longifolia</i>	Trees and Woodland	Flowering Plants
Nathusius's Pipistrelle	<i>Pipistrellus nathusii</i>	Urban	Bats
New Forest Shieldbug	<i>Eysarcoris aeneus</i>	Trees and Woodland	Flies
Night-flowering Catchfly	<i>Silene noctiflora</i>	Farm Mosaic	Flowering Plants
Nightingale	<i>Luscinia megarhynchos</i>	Trees and Woodland	Birds
Nightjar	<i>Caprimulgus europaeus</i>	Trees and Woodland	Birds
Nit-grass	<i>Gastridium ventricosum</i>	Urban	Flowering Plants
Nodding Thistle Gall Fly	<i>Urophora solstitialis</i>	Chalk	Flies

Common Name	Scientific Name	Assemblage	Taxon
Norfolk Hawker	<i>Anaciaeschna isoceles</i>	Floodplain	Dragonflies and Damselflies
Nottingham Catchfly	<i>Silene nutans</i>	Maritime Soft Cliffs	Flowering Plants
Nursehound	<i>Scyliorhinus stellaris</i>	Beaches, Seafronts and Seashores	Sharks and Rays
Oak Lutestring	<i>Cymatophorina diluta</i>	Trees and Woodland	Moths
Oak-leaved Goosefoot	<i>Chenopodium glaucum</i>	Farm Mosaic	Flowering Plants
Oldrose Bolete	<i>Boletus rhodopurpureus</i>	Trees and Woodland	Fungi
Olive Earthtongue	<i>Microglossum olivaceum</i>	Lowland Meadow	Fungi
Opposite-leaved Pondweed	<i>Groenlandia densa</i>	Floodplain	Flowering Plants
Orange Coral	<i>Ramariopsis crocea</i>	Trees and Woodland	Fungi
Orange Foxtail	<i>Alopecurus aequalis</i>	Floodplain	Flowering Plants
Orpine	<i>Sedum telephium</i>	Trees and Woodland	Flowering Plants
Oval-leaved Pottia	<i>Pterygoneurum ovatum</i>	Maritime Soft Cliffs	Mosses
Oxtongue Broomrape	<i>Orobanche picridis</i>	Chalk	Flowering Plants
Oystercatcher	<i>Haematopus ostralegus</i>	Beaches, Seafronts and Seashores	Birds
Pale Butterwort	<i>Pinguicula lusitanica</i>	Bogs	Flowering Plants
Pale Dog Violet	<i>Viola lactea</i>	Heath and Acid Grassland	Flowering Plants
Papillose Bog-moss	<i>Sphagnum papillosum</i>	Bogs	Mosses
Peacock's Tail	<i>Padina pavonica</i>	Beaches, Seafronts and Seashores	Brown Algae
Pearl-bordered Fritillary	<i>Boloria euphrosyne</i>	Heath and Acid Grassland	Butterflies
Petty Whin	<i>Genista anglica</i>	Bogs	Flowering Plants
Pillwort	<i>Pilularia globulifera</i>	Heath and Acid Grassland	Ferns

Common Name	Scientific Name	Assemblage	Taxon
Pink Ballerina	<i>Porpolomopsis calyptriformis</i>	Lowland Meadow	Fungi
Plaice	<i>Pleuronectes platessa</i>	Beaches, Seafronts and Seashores	Fish
Plicate Sweet-grass	<i>Glyceria notata</i>	Floodplain	Flowering Plants
Pochard	<i>Aythya ferina</i>	Floodplain	Birds
Portland Ribbon Wave	<i>Idaea degeneraria</i>	Chalk	Moths
Portland Spurge	<i>Euphorbia portlandica</i>	Chalk	Flowering Plants
Potter Flower Bee	<i>Anthophora retusa</i>	Maritime Soft Cliffs	Bees
Prickly Poppy	<i>Papaver argemone</i>	Farm Mosaic	Flowering Plants
Purple Ramping-fumitory	<i>Fumaria purpurea</i>	Farm Mosaic	Flowering
Ray's Knotgrass	<i>Polygonum oxyspermum</i>	Dune Shingle	Flowering Plants
Red Bog-moss	<i>Sphagnum capillifolium</i>	Bogs	Mosses
Red Speckled Anemone	<i>Anthopleura ballii</i>	Beaches, Seafronts and Seashores	Sea Anemones
Red Squirrel	<i>Sciurus vulgaris</i>	Trees and Woodland	Mammals
Red Wood Ant	<i>Formica rufa</i>	Trees and Woodland	Ants
Reddish Buff	<i>Acosmetia caliginosa</i>	Heath and Acid Grassland	Moths
Red-legged Digger Wasp	<i>Cerceris ruficornis</i>	Heath and Acid Grassland	Wasps
Redshank	<i>Tringa totanus</i>	Floodplain	Birds
Rey's Planthopper	<i>Calligypona reyi</i>	Saltmarsh	True Bugs
Ringed Plover	<i>Charadrius hiaticula</i>	Beaches, Seafronts and Seashores	Birds
River Lamprey	<i>Lampetra fluviatilis</i>	Rivers	Fish
Rocky Mountain Sunburn	<i>Caloplaca atroflava</i>	Trees and Woodland	Lichens

Common Name	Scientific Name	Assemblage	Taxon
Roseate Tern	<i>Sterna dougallii</i>	Beaches, Seafronts and Seashores	Birds
Rossetti's Pouncewort	<i>Cololejeunea rossettiana</i>	Maritime Soft Cliffs	Liverworts
Rosy Wave	<i>Scopula emutaria</i>	Saltmarsh	Moths
Rough Poppy	<i>Papaver hybridum</i>	Farm Mosaic	Flowering Plants
Round-leaved Sundew	<i>Drosera rotundifolia</i>	Bogs	Flowering Plants
Royal Fern	<i>Osmunda regalis</i>	Maritime Soft Cliffs	Ferns
Ruddy Carpet	<i>Catarhoe rubidata</i>	Chalk	Moths
Rue-leaved Saxifrage	<i>Saxifraga tridactylites</i>	Urban	Flowering Plants
Rustyback Fern	<i>Asplenium ceterach</i>	Urban	Ferns
Saltmarsh Horsefly	<i>Atylotus latistriatus</i>	Saltmarsh	Flies
Saltmarsh Lacehopper	<i>Oliarus leporinus</i>	Saltmarsh	True Bugs
Saltmarsh Short-spur	<i>Anisodactylus poeciloides</i>	Saltmarsh	Beetles
Saltmarsh Spotwing	<i>Meliera picta</i>	Lagoons	Flies
Saltwort	<i>Salsola kali</i>	Dune Shingle	Flowering Plants
Sand Cat's-tail	<i>Phleum arenarium</i>	Dune Shingle	Flowering Plants
Sand Couch	<i>Elytrigia juncea</i>	Dune Shingle	Flowering Plants
Sand Dart	<i>Agrotis ripae</i>	Dune Shingle	Moths
Sand Pill-millipede	<i>Trachysphaera lobata</i>	Maritime Soft Cliffs	Millipedes
Sand Smelt	<i>Atherina presbyter</i>	Beaches, Seafronts and Seashores	Fish
Sanderling	<i>Calidris alba</i>	Beaches, Seafronts and Seashores	Birds
Sandwich Tern	<i>Thalasseus sandvicensis</i>	Beaches, Seafronts and Seashores	Birds

Common Name	Scientific Name	Assemblage	Taxon
Sandy Shorebug	<i>Saldula arenicola</i>	Maritime Soft Cliffs	Bugs
Sassari Crisp-moss	<i>Tortella inflexa</i>	Chalk	Mosses
Satan's Bolete	<i>Boletus satanas</i>	Trees and Woodland	Fungi
Saw-wort Fly	<i>Urophora spoliata</i>	Heath and Acid Grassland	Flies
Scabrous Feather-moss	<i>Rhynchostegiella litorea</i>	Maritime Soft Cliffs	Mosses
Scarce Blue-tailed Damselfly	<i>Ischnura pumilio</i>	Maritime Soft Cliffs	Dragonflies and Damselflies
Scarce Chaser	<i>Libellula fulva</i>	Floodplain	Dragonflies and Damselflies
Scarce Knapweed Fly	<i>Acinia corniculata</i>	Lowland Meadow	Flies
Scarce Merveille du Jour	<i>Moma alpium</i>	Trees and Woodland	Moths
Scrambled Egg Lichen	<i>Fulgensia fulgens</i>	Chalk	Lichens
Sea Bindweed	<i>Calystegia soldanella</i>	Dune Shingle	Flowering Plants
Sea Holly	<i>Eryngium maritimum</i>	Dune Shingle	Flowering Plants
Sea Knotgrass	<i>Polygoum maritimum</i>	Dune Shingle	Flowering Plants
Sea Lamprey	<i>Petromyzon marinus</i>	Rivers	Fish
Sea Spleenwort	<i>Asplenium marinum</i>	Urban	Ferns
Sea Spurge	<i>Euphorbia paralias</i>	Dune Shingle	Flowering Plants
Sea Trout	<i>Salmo trutta</i>	Rivers	Fish
Sea Wormwood	<i>Seriphidium maritimum</i>	Saltmarsh	Flowering Plants
Sea-aster Bee	<i>Colletes halophilus</i>	Saltmarsh	Bees
Sea-heath	<i>Frankenia laevis</i>	Saltmarsh	Flowering Plants
Sedge Warbler	<i>Acrocephalus schoenobaenus</i>	Floodplain	Birds

Common Name	Scientific Name	Assemblage	Taxon
Serotine	<i>Eptesicus serotinus</i>	Urban	Bats
Shaggy Mouse-Ear-Hawkweed	<i>Pilosella peleteriana</i>	Chalk	Flowering Plants
Sheep's-bit Scabious	<i>Jasione montana</i>	Heath and Acid Grassland	Flowering Plants
Short-snouted Seahorse	<i>Hippocampus hippocampus</i>	Beaches, Seafronts and Seashores	Fish
Shoveler	<i>Spatula clypeata</i>	Floodplain	Birds
Six-belted Clearwing	<i>Bembecia ichneumoniformis</i>	Chalk	Moths
Skylark	<i>Alauda arvensis</i>	Farm Mosaic	Birds
Slate Bolete	<i>Leccinum duriusculum</i>	Trees and Woodland	Fungi
Slender Beard-moss	<i>Didymodon acutus</i>	Chalk	Mosses
Slender Bird's-foot-trefoil	<i>Lotus angustissimus</i>	Floodplain	Flowering Plants
Slender Centaury	<i>Centaureum tenuiflorum</i>	Saltmarsh	Flowering Plants
Slender Club-rush	<i>Isolepis cernua</i>	Floodplain	Flowering Plants
Slender Hare's-ear	<i>Bupleurum tenuissimum</i>	Saltmarsh	Flowering Plants
Slender Spike-rush	<i>Eleocharis uniglumis</i>	Floodplain	Flowering Plants
Slender Tare	<i>Vicia parviflora</i>	Chalk	Flowering Plants
Slender Tufted Sedge	<i>Carex acuta</i>	Floodplain	Flowering Plants
Small Black Arches	<i>Meganola strigula</i>	Trees and Woodland	Moths
Small Cord Grass	<i>Spartina maritima</i>	Saltmarsh	Flowering Plants
Small Cudweed	<i>Filago minima</i>	Heath and Acid Grassland	Flowering Plants
Small Scabious Mining Bee	<i>Andrena marginata</i>	Chalk	Bees
Small Toadflax	<i>Chaenorhinum minus</i>	Farm Mosaic	Flowering Plants



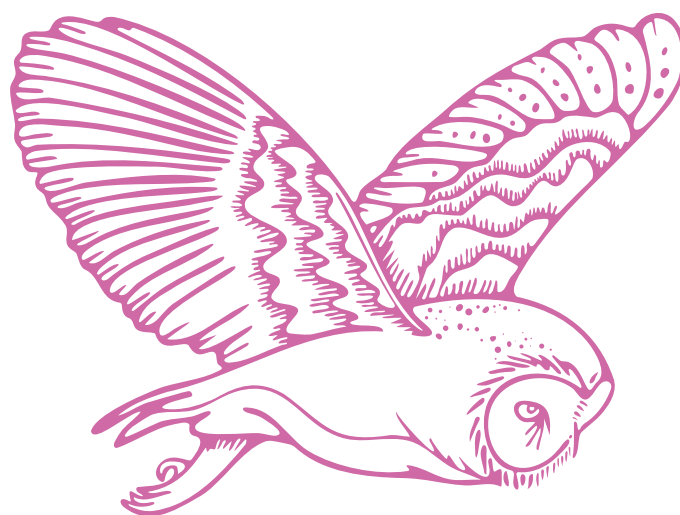
Common Name	Scientific Name	Assemblage	Taxon
Small Water-pepper	<i>Persicaria minor</i>	Floodplain	Flowering Plants
Small-flowered Catchfly	<i>Silene gallica</i>	Farm Mosaic	Flowering Plants
Smelt	<i>Osmerus eperlanus</i>	Beaches, Seafronts and Seashores	Fish
Smooth Hornwort	<i>Phaeoceros laevis</i>	Maritime Soft Cliffs	Lichens
Sneezewort	<i>Achillea ptarmica</i>	Heath and Acid Grassland	Flowering Plants
Snipe	<i>Gallinago gallinago</i>	Floodplain	Birds
Sole	<i>Solea solea</i>	Beaches, Seafronts and Seashores	Fish
Solomon's Seal	<i>Polygonatum multiflorum</i>	Trees and Woodland	Flowering Plants
Song Thrush	<i>Turdus philomelos</i>	Urban	Birds
Southern Polypody	<i>Polypodium cambricum</i>	Urban	Ferns
Spiral Tasselweed	<i>Ruppia cirrhosa</i>	Lagoons	Flowering Plants
Spotted Flycatcher	<i>Muscicapa striata</i>	Urban	Birds
Spreading Hedge Parsley	<i>Torilis arvensis</i>	Farm Mosaic	Flowering Plants
Spring Vetch	<i>Vicia lathyroides</i>	Heath and Acid Grassland	Flowering Plants
Stag Beetle	<i>Lucanus cervus</i>	Urban	Beetles
Stalked Jellyfish	<i>Haliclystus auricula</i>	Beaches, Seafronts and Seashores	Stalked Jellyfish
Star Sedge	<i>Carex echinata</i>	Bogs	Flowering Plants
Starke's Pottia	<i>Microbryum starckeanum</i>	Maritime Soft Cliffs	Mosses
Starlet Sea Anemone	<i>Nematostella vectensis</i>	Lagoons	Sea Anemones
Starry Thyme-moss	<i>Mnium stellare</i>	Chalk	Mosses
Sterile Beardless-moss	<i>Weissia sterilis</i>	Maritime Soft Cliffs	Mosses

Common Name	Scientific Name	Assemblage	Taxon
String-of-sausage Lichen	<i>Usnea articulata</i>	Trees and Woodland	Lichens
Suffocated Clover	<i>Trifolium suffocatum</i>	Heath and Acid Grassland	Flowering Plants
Swift	<i>Apus apus</i>	Urban	Birds
Tawny Cockroach	<i>Ectobius pallidus</i>	Chalk	Cockroaches
Teal	<i>Anas crecca</i>	Floodplain	Birds
Tentacled Lagoon-Worm	<i>Alkmaria romijni</i>	Lagoons	Segmented Worms
The Isle of Wight Hopper	<i>Mocuellus collinus</i>	Dune Shingle	True Bugs
Thick-lipped Grey Mullet	<i>Chelon labrosus</i>	Beaches, Seafronts and Seashores	Fish
Thin-lipped Mullet	<i>Liza ramada</i>	Beaches, Seafronts and Seashores	Fish
Thornback Ray	<i>Raja clavata</i>	Beaches, Seafronts and Seashores	Sharks and Rays
Thread-leaved Water-crowfoot	<i>Ranunculus trichophyllus</i>	Floodplain	Flowering Plants
Tiered Tooth Fungus	<i>Creolophus cirrhatus</i>	Trees and Woodland	Fungi
Toad-rush Case-bearer	<i>Coleophora lassella</i>	Dune Shingle	Moths
Tree Lungwort	<i>Lobaria pulmonaria</i>	Trees and Woodland	Lichens
Triangular Pygmy moss	<i>Acaulon triquetrum</i>	Maritime Soft Cliffs	Mosses
Tubular Water Dropwort	<i>Oenanthe fistulosa</i>	Floodplain	Flowering Plants
Turk's Earth-centipede	<i>Nothogeophilus turki</i>	Urban	Centipedes
Turtle Dove	<i>Streptopelia turtur</i>	Farm Mosaic	Birds
Twisting Thread-moss	<i>Bryum torquescens</i>	Maritime Soft Cliffs	Mosses
Twist-tip Feather-moss	<i>Oxyrrhynchium schleicheri</i>	Trees and Woodland	Mosses
Two-coloured Mimic Wasp	<i>Mimesa bicolor</i>	Chalk	Wasps



Common Name	Scientific Name	Assemblage	Taxon
Undulate Ray	<i>Raja undulata</i>	Beaches, Seafronts and Seashores	Sharks and Rays
Upright Chickweed	<i>Moenchia erecta</i>	Heath and Acid Grassland	Flowering
Upright Goosefoot	<i>Chenopodium urbicum</i>	Farm Mosaic	Flowering Plants
Vectis-moss	<i>Chenia leptophylla</i>	Farm Mosaic	Mosses
Venus's-looking-glass	<i>Legousia hybrida</i>	Farm Mosaic	Flowering Plants
Violet Crowncup	<i>Sarcosphaera coronaria</i>	Trees and Woodland	Fungi
Violet Helleborine	<i>Epipactis purpurea</i>	Trees and Woodland	Flowering Plants
Violet Webcap	<i>Cortinarius violaceus</i>	Trees and Woodland	Fungi
Wall Butterfly	<i>Lasiommata megera</i>	Urban	Butterflies
Water Dock	<i>Rumex hydrolapathum</i>	Floodplain	Flowering Plants
Weasel's-snout	<i>Misopates orontium</i>	Farm Mosaic	Flowering Plants
Wetted Thistle Fly	<i>Terellia winthemi</i>	Chalk	Flies
West European Hedgehog	<i>Erinaceus europaeus</i>	Urban	Mammals
Western Barbastelle	<i>Barbastella barbastellus</i>	Trees and Woodland	Bats
White Admiral	<i>Limenitis camilla</i>	Trees and Woodland	Butterflies
White Helleborine	<i>Cephalanthera damasonium</i>	Trees and Woodland	Flowering Plants
White-letter Hairstreak	<i>Satyrium w-album</i>	Trees and Woodland	Butterflies
White Sedge	<i>Carex canescens</i>	Bogs	Flowering Plants
White-striped Centipede	<i>Henia Vesuviana</i>	Maritime Soft Cliffs	Centipedes
Wild Clary	<i>Salvia verbenaca</i>	Chalk	Flowering Plants
Wild Liquorice	<i>Astragalus glycyphyllos</i>	Maritime Soft Cliffs	Flowering Plants

Common Name	Scientific Name	Assemblage	Taxon
Willow Warbler	<i>Phylloscopus trochilus</i>	Trees and Woodland	Birds
Winter Oak Groundling	<i>Carpatolechia decorella</i>	Trees and Woodland	Moths
Witches' Whiskers Lichen	<i>Usnea florida</i>	Trees and Woodland	Lichens
Wood Calamint	<i>Clinopodium menthifolium</i>	Trees and Woodland	Flowering Plants
Wood Cricket	<i>Nemobius sylvestris</i>	Trees and Woodland	Grasshoppers and Crickets
Wood Horsetail	<i>Equisetum sylvaticum</i>	Floodplain	Ferns
Woodcock	<i>Scolopax rusticola</i>	Trees and Woodland	Birds
Yarrow Broomrape	<i>Orobanche purpurea</i>	Heath and Acid Grassland	Flowering Plants
Yellow Bartsia	<i>Parentucellia viscosa</i>	Lowland Meadow	Flowering Plants
Yellow Bird's-nest	<i>Monotropa hypopitys</i>	Trees and Woodland	Flowering Plants
Yellow Water-lily	<i>Nuphar lutea</i>	Floodplain	Flowering Plants
Yellowhammer	<i>Emberiza citrinella</i>	Farm Mosaic	Birds
Zoned Tooth Fungus	<i>Hydnellum concrescens</i>	Trees and Woodland	Fungi

Illustration: Barn Owl (*Tyto alba*)Illustrations from left: Adonis Blue (*Polyommatus bellargus*); English Bluebell (*Hyacinthoides non-scripta*)

2. Species list – Organised by Assemblage

The assemblages provided here bring together all of the information listed above in Chapter 1, arranged according to the categories of habitat within which they best fit, with regard to their lifecycle requirements and Island ecology.

The 14 nominated assemblages have evolved through the work of species selection, using the definitions of habitat preference, territory distribution, commuting, foraging and migration ranges, monolecty, parasitism and other obligate and trophic dependencies.

The development of the assemblage list has been undertaken separately from the thematic and habitat prioritisation process in order to avoid unintended bias that could skew a data-based typology. The independence of these twin-track efforts has also meant that the significance of transitional habitats, a key concept in the IW LNRS, is better represented as there is no 1-to-1 mapping of the two, but instead a range of intersections.

Table 3 lists the priorities and measures that apply to each assemblage.

Tables 4-16 lists all priority species within their corresponding assemblage.

2.1. Assemblages

Table 3: Assemblages and Priorities/Measures

Assemblage	Relevant priorities and measure codes
	See Statement of Biodiversity Priorities: Part 2 for full details of priorities and measures (actions)
Trees and Woodland	<p>Recover lost sites in plantations and wooded matrix - measure(s): LGH3.1</p> <p>Apply the Lawton Principles of Bigger, Better, More, Joined-up to the Island - measure(s): LP1.1 LP1.2 LP1.3 LP1.5 LP1.8 LP1.9</p> <p>Island-wide culture of collaboration and meaningful landscape-scale working - measure(s): OV1.1 OV1.2 OV1.3 OV1.4</p> <p>Improving data and knowledge of Island Nature - measure(s): OV2.1</p> <p>Public engagement on the needs, value and future of Island Nature - measure(s): OV3.1 OV3.2</p> <p>Retain, improve, and extend the network of Island woodland mosaics - measure(s): TW1.1 TW1.10 TW1.2 TW1.3 TW1.4 TW1.5 TW1.6 TW1.7 TW1.8 TW1.9</p> <p>Increase the number of ecologically useful trees outside woodland settings - measure(s): TW2.1 TW2.2 TW2.3</p> <p>Enhance ecological quality and function in urban green and grey infrastructure - measure(s): UGG1.1</p>



Wood pasture and parkland at Nunwell, Brading. Photography by Daneen Cowling.

Illustrations: Royal Ferns (*Osmunda regalis*);
Brown Hare (*Lepus europaeus*)

Assemblage

Relevant priorities and measure codes

See Statement of Biodiversity Priorities: Part 2 for full details of priorities and measures (actions)

Chalk

Protecting and enhancing the health of chalk streams - measure(s): CR4.1

Enhance and recover calcareous and acid grassland and heath (conservation grasslands) - measure(s): LGH1.1 LGH1.2 LGH1.3 LGH1.4 LGH1.5 LGH1.7

Improve soil and water quality - measure(s): LGH2.1 LGH2.2

Recover lost sites in plantations and wooded matrix - measure(s): LGH3.1

Apply the Lawton Principles of Bigger, Better, More, Joined-up to the Island - measure(s): LP1.1 LP1.2 LP1.3 LP1.5

Island-wide culture of collaboration and meaningful landscape-scale working - measure(s): OV1.1 OV1.2 OV1.3 OV1.4

Improving data and knowledge of Island Nature - measure(s): OV2.1

Public engagement on the needs, value and future of Island Nature - measure(s): OV3.1 OV3.2

Retain, improve, and extend the network of Island woodland mosaics - measure(s): TW1.10

Enhance ecological quality and function in urban green and grey infrastructure - measure(s): UGG1.5 UGG1.7



Early Gentian on Tennyson Down, West Wight. Photography by Ian Boyd.

Assemblage

Relevant priorities and measure codes

See Statement of Biodiversity Priorities: Part 2 for full details of priorities and measures (actions)

Heath and Acid Grassland

Enhance and recover calcareous and acid grassland and heath (conservation grasslands) - measure(s): LGH1.1 LGH1.2 LGH1.3 LGH1.6 LGH1.7

Improve soil and water quality - measure(s): LGH2.1 LGH2.2

Recover lost sites in plantations and wooded matrix - measure(s): LGH3.1

Apply the Lawton Principles of Bigger, Better, More, Joined-up to the Island - measure(s): LP1.1 LP1.2 LP1.3 LP1.5

Island-wide culture of collaboration and meaningful landscape-scale working - measure(s): OV1.1 OV1.2 OV1.3 OV1.4

Improving data and knowledge of Island Nature - measure(s): OV2.1

Public engagement on the needs, value and future of Island Nature - measure(s): OV3.1 OV3.2

Retain, improve, and extend the network of Island woodland mosaics - measure(s): TW1.10

Enhance ecological quality and function in urban green, blue and grey infrastructure - measure(s): UGG1.5 UGG1.7



Heathland at Headon Warren, Totland. Photography by Daneen Cowling.

Assemblage	Relevant priorities and measure codes
	See Statement of Biodiversity Priorities: Part 2 for full details of priorities and measures (actions)
Lowland Meadows	<p>Enhance and recover calcareous and acid grassland and heath (conservation grasslands) - measure(s): LGH1.3 LGH1.6 LGH1.7</p> <p>Improve soil and water quality - measure(s): LGH2.1</p> <p>Recover lost sites in plantations and wooded matrix - measure(s): LGH3.1</p> <p>Restore, improve the condition of, and connect priority lowland meadows sites and fragments - measure(s): LGH4.1 LGH4.2</p> <p>Apply the Lawton Principles of Bigger, Better, More, Joined-up to the Island - measure(s): LP1.1 LP1.2 LP1.3</p> <p>Island-wide culture of collaboration and meaningful landscape-scale working - measure(s): OV1.1 OV1.2 OV1.3 OV1.4</p> <p>Improving data and knowledge of Island Nature - measure(s): OV2.1</p> <p>Public engagement on the needs, value and future of Island Nature - measure(s): OV3.1 OV3.2</p> <p>Retain, improve, and extend the network of Island woodland mosaics - measure(s): TW1.10 TW1.9</p> <p>Enhance ecological quality and function in urban green, blue and grey infrastructure - measure(s): UGG1.5 UGG1.7</p>



Lowland meadow with Ragged-robin, Yaverland. Photography by Claire Hector.

Assemblage	Relevant priorities and measure codes
	See Statement of Biodiversity Priorities: Part 2 for full details of priorities and measures (actions)
Bogs	<p>Protect, conserve and manage deep peat reserves and their big habitats and headwater stream environments - measure(s): CR5.1</p> <p>Improve soil and water quality - measure(s): LGH2.2</p> <p>Apply the Lawton Principles of Bigger, Better, More, Joined-up to the Island - measure(s): LP1.1, LP1.2, LP1.3</p> <p>Island-wide culture of collaboration and meaningful landscape-scale working - measure(s): OV1.1 OV1.2 OV1.3 OV1.4</p> <p>Improving data and knowledge of Island Nature - measure(s): OV2.1</p> <p>Public engagement on the needs, value and future of Island Nature - measure(s): OV3.1 OV3.2</p>



Bog after restoration work, Bohemia Bog. Photography by Claire Hector.

Assemblage

Relevant priorities and measure codes

See Statement of Biodiversity Priorities: Part 2 for full details of priorities and measures (actions)

Floodplain

- Improve ecological function, quality and resilience of rivers and their floodplain mosaics - measure(s): CR1.1 CR1.2 CR1.3 CR1.4 CR1.5
- Protect and ensure equitable sharing of water resources between people and wildlife - measure(s): CR2.1
- Improve catchment water quality - measure(s): CR3.1
- Protecting and enhancing the health of chalk streams - measure(s): CR4.1
- Protect, conserve and manage deep peat reserves and their big habitats and headwater stream environments - measure(s): CR5.1
- Protect and expand the coverage of the Island's pond network and associated foraging, commuting, shelter and hibernation habitats - measure(s): CR6.1
- Recover lost sites in plantations and wooded matrix - measure(s): LGH3.1
- Apply the Lawton Principles of Bigger, Better, More, Joined-up to the Island - measure(s): LP1.1 LP1.2 LP1.3
- Island-wide culture of collaboration and meaningful landscape-scale working - measure(s): OV1.1 OV1.2 OV1.3 OV1.4
- Improving data and knowledge of Island Nature - measure(s): OV2.1
- Public engagement on the needs, value and future of Island Nature - measure(s): OV3.1 OV3.2
- Retain, improve, and extend the network of Island woodland mosaics - measure(s): TW1.3 TW1.4
- Enhance ecological quality and function in urban green, blue and grey infrastructure - measure(s): UGG1.1



Eastern Yar river meander, Brading. Photography by Daneen Cowling.

Assemblage

Relevant priorities and measure codes

See Statement of Biodiversity Priorities: Part 2 for full details of priorities and measures (actions)

Rivers

- Improve ecological function, quality and resilience of rivers and their floodplain mosaics - measure(s): CR1.1 CR1.4 CR1.5
- Protect and ensure equitable sharing of water resources between people and wildlife - measure(s): CR2.1
- Improve catchment water quality - measure(s): CR3.1
- Protecting and enhancing the health of chalk streams - measure(s): CR4.1
- Apply the Lawton Principles of Bigger, Better, More, Joined-up to the Island - measure(s): LP1.1 LP1.2 LP1.3
- Island-wide culture of collaboration and meaningful landscape-scale working - measure(s): OV1.1 OV1.2 OV1.3 OV1.4
- Improving data and knowledge of Island Nature - measure(s): OV2.1
- Public engagement on the needs, value and future of Island Nature - measure(s): OV3.1 OV3.2
- Retain, improve, and extend the network of Island woodland mosaics - measure(s): TW1.3
- Enhance ecological quality and function in urban green, blue and grey infrastructure - measure(s): UGG1.1



Caul Bourne chalk stream in Winkle Street, Calbourne. Photography by Claire Hector.

Assemblage

Relevant priorities and measure codes

See Statement of Biodiversity Priorities: Part 2 for full details of priorities and measures (actions)

Farm Mosaic

Protect and ensure equitable sharing of water resources between people and wildlife - measure(s): CR2.1

Apply the Lawton Principles of Bigger, Better, More, Joined-up to the Island - measure(s): LP1.1 LP1.2 LP1.3 LP1.4 LP1.6 LP1.7 LP1.8 LP1.9

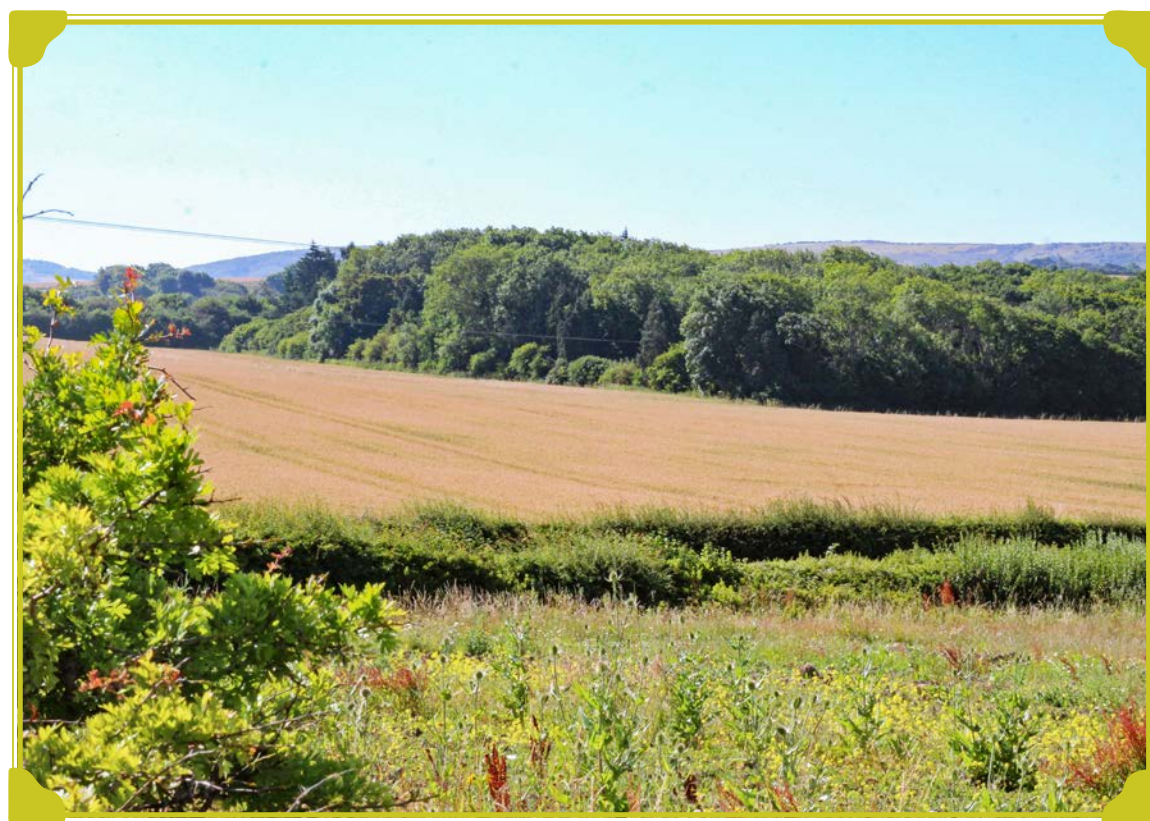
Island-wide culture of collaboration and meaningful landscape-scale working - measure(s): OV1.1 OV1.2 OV1.3 OV1.4

Improving data and knowledge of Island Nature - measure(s): OV2.1

Public engagement on the needs, value and future of Island Nature - measure(s): OV3.1 OV3.2

Protect, conserve, and supplement soft cliff habitats - measure(s): SC1.1

Retain, improve, and extend the network of Island woodland mosaics - measure(s): TW1.5 TW1.7 TW1.8 TW1.9



Arable field and habitat mosaic, Freshwater. Photography by Ian Boyd.

Assemblage

Relevant priorities and measure codes

See Statement of Biodiversity Priorities: Part 2 for full details of priorities and measures (actions)

Maritime Soft Cliffs

Apply the Lawton Principles of Bigger, Better, More, Joined-up to the Island - measure(s): LP1.1 LP1.2 LP1.3

Island-wide culture of collaboration and meaningful landscape-scale working - measure(s): OV1.1 OV1.2 OV1.3 OV1.4

Improving data and knowledge of Island Nature - measure(s): OV2.1

Public engagement on the needs, value and future of Island Nature - measure(s): OV3.1 OV3.2

Protect, conserve, and supplement soft cliff habitats - measure(s): SC1.1

Enhance ecological quality and function in urban green, blue and grey infrastructure - measure(s): UGG1.5



Sedimentary cliffs at Alum Bay. Photography by Kai Davis.

Assemblage

Relevant priorities and measure codes

See Statement of Biodiversity Priorities: Part 2 for full details of priorities and measures (actions)

Beaches, Seafronts and Seashores

- Protect and conserve species vulnerable to recreational disturbance - measure(s): BSS1.1 BSS1.2
- Protect, conserve, and extend intertidal nursery habitats - measure(s): BSS2.1
- Integrate habitat creation on hard infrastructure to support species threatened by coastal squeeze - measure(s): BSS3.1
- Improve the ecological function, resilience and quality of Estuary, Harbour, Transitional Water mosaics - measure(s): 2.1 EHT1.3
- Reduce the impacts of recreational and commercial disturbance to priority habitats and species - measure(s): EHT2.1
- Apply the Lawton Principles of Bigger, Better, More, Joined-up to the Island - measure(s): LP1.1 LP1.2 LP1.3
- Island-wide culture of collaboration and meaningful landscape-scale working - measure(s): OV1.1 OV1.2 OV1.3 OV1.4
- Improving data and knowledge of Island Nature - measure(s): OV2.1
- Public engagement on the needs, value and future of Island Nature - measure(s): OV3.1 OV3.2



Ventnor seafront. Photography by Kai Davis.

Assemblage

Relevant priorities and measure codes

See Statement of Biodiversity Priorities: Part 2 for full details of priorities and measures (actions)

Saltmarsh

- Protect and conserve species vulnerable to recreational disturbance - measure(s): BSS1.1
- Improve catchment water quality - measure(s): CR3.1
- Improve the ecological function, resilience and quality of Estuary, Harbour, Transitional Water mosaics - measure(s): EHT1.1 EHT1.2 EHT1.3
- Reduce the impacts of recreational and commercial disturbance to priority habitats and species - measure(s): EHT2.1
- Apply the Lawton Principles of Bigger, Better, More, Joined-up to the Island - measure(s): LP1.1 LP1.2 LP1.3
- Island-wide culture of collaboration and meaningful landscape-scale working - measure(s): OV1.1 OV1.2 OV1.3 OV1.4
- Improving data and knowledge of Island Nature - measure(s): OV2.1
- Public engagement on the needs, value and future of Island Nature - measure(s): OV3.1 OV3.2



Saltmarsh at St Helens. Photography by Daneen Cowling.

Assemblage

Relevant priorities and measure codes

See Statement of Biodiversity Priorities: Part 2 for full details of priorities and measures (actions)

Lagoons

Protect, manage and conserve scarce coastal habitats with very limited scope for natural spread or replacement - measure(s): LDS1.1

Support vulnerable habitats that have nowhere to go - measure(s): LDS2.1

Apply the Lawton Principles of Bigger, Better, More, Joined-up to the Island - measure(s): LP1.1 LP1.2 LP1.3

Island-wide culture of collaboration and meaningful landscape-scale working - measure(s): OV1.1 OV1.2 OV1.3 OV1.4

Improving data and knowledge of Island Nature - measure(s): OV2.1

Public engagement on the needs, value and future of Island Nature -measure(s): OV3.1 OV3.2



View of the lagoon behind the Duver, St Helens. Photography by Daneen Cowling.

Assemblage

Relevant priorities and measure codes

See Statement of Biodiversity Priorities: Part 2 for full details of priorities and measures (actions)

Dune and Shingle

Protect and conserve species vulnerable to recreational disturbance - measure(s): BSS1.2

Protect, manage and conserve scarce coastal habitats with very limited scope for natural spread or replacement - measure(s): LDS1.1

Support vulnerable habitats that have nowhere to go - measure(s): LDS2.1

Apply the Lawton Principles of Bigger, Better, More, Joined-up to the Island - measure(s): LP1.1 LP1.2 LP1.3

Island-wide culture of collaboration and meaningful landscape-scale working - measure(s): OV1.1 OV1.2 OV1.3 OV1.4

Improving data and knowledge of Island Nature - measure(s): OV2.1

Public engagement on the needs, value and future of Island Nature - measure(s): OV3.1 OV3.2



Sea rocket, Thorness. Photography by Ian Boyd.

Assemblage

Relevant priorities and measure codes

See Statement of Biodiversity Priorities: Part 2 for full details of priorities and measures (actions)

Urban

Improve ecological function, quality and resilience of rivers and their floodplain mosaics - measure(s): CR1.4 CR1.5

Protect and expand the coverage of the Island's pond network and associated foraging, commuting, shelter and hibernation habitats - measure(s): CR6.1

Reduce the impacts of recreational and commercial disturbance to priority habitats and species - measure(s): EHT2.1

Protect, manage and conserve scarce coastal habitats with very limited scope for natural spread or replacement - measure(s): LDS1.1

Support vulnerable habitats that have nowhere to go - measure(s): LDS2.1

Restore, improve the condition of, and connect priority lowland meadows sites and fragments - measure(s): LGH4.1

Apply the Lawton Principles of Bigger, Better, More, Joined-up to the Island - measure(s): LP1.1 LP1.2 LP1.3 LP1.8 LP1.9

Island-wide culture of collaboration and meaningful landscape-scale working - measure(s): OV1.1 OV1.2 OV1.3 OV1.4

Improving data and knowledge of Island Nature - measure(s): OV2.1

Public engagement on the needs, value and future of Island Nature - measure(s): OV3.1 OV3.2

Retain, improve, and extend the network of Island woodland mosaics - measure(s): TW1.1 TW1.6 TW1.7

Increase the number of ecologically useful trees outside woodland settings - measure(s): TW2.1 TW2.2 TW2.3

Enhance ecological quality and function in urban green, blue and grey infrastructure - measure(s): UGG1.1 UGG1.2 UGG1.3 UGG1.4 UGG1.5 UGG1.6 UGG1.7



Daisies on pavement edge, Cowes. Photography by Claire Hector.

2.2. Priority Species Grouped Within Assemblages

2.2.1. Trees and Woodland Assemblage

The measures proposed to support this assemblage generally focus on improving the habitat quality of larger Island woodlands and plantations by diversifying structure and age through, for example, restoring traditional coppice management; creating and maintaining open spaces where enclosed grassland, heath and scrub communities can persist; and by softening margins and boundaries where transitions into neighbouring habitats and links to adjacent woodlands, can develop. Ancient woodland, wood pasture, wet woodland and scrub communities are all identified for improvement and there are specific measures for boosting the Island's deadwood habitat resource, managing Ash Dieback and encouraging the establishment of new trees outside woodlands (such as hedgerow trees and urban street trees). There is renewed focus on individual ancient and veteran trees, and as components of woodland habitats.



Dormouse. Photography by Fiona and Chuck Eccleston.

Table 4: Species within the Trees and Woodland Assemblage

Scientific Name	Common Name	Taxon
<i>Bacidia incompta</i>	A Dot Lichen	Lichens
<i>Microrhagus pygmaeus</i>	A False Click Beetle	Beetles
<i>Chrysothrix chrysophthalma</i>	A Gold Dust Lichen	Lichens
<i>Cheilosia barbata</i>	A Hoverfly	Flies
<i>Enterographa soorediata</i>	A Lichen	Lichens
<i>Wadeana dendrographa</i>	A Lichen	Lichens
<i>Myotis alcathoe</i>	Alcathoe Bat	Mammals
<i>Amanita ovoidea</i>	Bearded Amanita	Fungi
<i>Myotis bechsteinii</i>	Bechstein's Bat	Mammals
<i>Neottia nidus-avis</i>	Bird's-nest Orchid	Flowering Plants
<i>Lathyrus linifolius</i>	Bitter-vetch	Flowering Plants
<i>Phellodon niger</i>	Black Tooth Fungus	Fungi
<i>Cantherellus melanoxeros</i>	Blackening Chanterelle	Fungi
<i>Nepeta cataria</i>	Cat Mint	Flowering Plants
<i>Sparassis brevipes</i>	Cauliflower fungus	Fungi
<i>Melampyrum pratense</i>	Common Cow-wheat	Flowering Plants
<i>Atropa belladonna</i>	Deadly Nightshade	Flowering Plants
<i>Aureoboletus gentilis</i>	Gilded Bolete	Fungi
<i>Solidago virgaurea</i>	Goldenrod	Flowering Plants

Scientific Name	Common Name	Taxon
<i>Orobanche rapum-genistae</i>	Greater Broomrape	Flowering Plants
<i>Platanthera chlorantha</i>	Greater Butterfly Orchid	Flowering Plants
<i>Helleborus viridis</i>	Green Hellebore	Flowering Plants
<i>Epipactis phyllanthes</i>	Green-flowered Helleborine	Flowering Plants
<i>Phellodon melaleucus</i>	Grey Tooth Fungus	Fungi
<i>Blechnum spicant</i>	Hard Fern	Ferns
<i>Polystichum aculeatum</i>	Hard Shield-fern	Ferns
<i>Rosa tomentosa</i>	Harsh Downy Rose	Flowering Plants
<i>Muscardinus avellanarius</i>	Hazel Dormouse	Mammals
<i>Falco subbuteo</i>	Hobby	Birds
<i>Eupithecia plumbeolata</i>	Lead-coloured Pug	Moths
<i>Nyctalus leisleri</i>	Leisler's Bat	Mammals
<i>Archiearis notha</i>	Light Orange Underwing	Moths
<i>Pulmonaria longifolia</i>	Narrow-leaved Lungwort	Flowering Plants
<i>Eysarcoris aeneus</i>	New Forest Shieldbug	Flies
<i>Luscinia megarhynchos</i>	Nightingale	Birds
<i>Caprimulgus europaeus</i>	Nightjar	Birds
<i>Cymatophorina diluta</i>	Oak Lutestring	Moths
<i>Boletus rhodopurpureus</i>	Oldrose Bolete	Fungi
<i>Ramariopsis crocea</i>	Orange Coral	Fungi

Scientific Name	Common Name	Taxon
<i>Sedum telephium</i>	Orpine	Flowering Plants
<i>Sciurus vulgaris</i>	Red Squirrel	Mammals
<i>Formica rufa</i>	Red Wood Ant	Ants
<i>Caloplaca atroflava</i>	Rocky Mountain Sunburn	Lichens
<i>Boletus satanas</i>	Satan's Bolete	Fungi
<i>Moma alpium</i>	Scarce Merveille du Jour	Moths
<i>Leccinum duriusculum</i>	Slate Bolete	Fungi
<i>Meganola strigula</i>	Small Black Arches	Moths
<i>Polygonatum multiflorum</i>	Solomon's Seal	Flowering Plants
<i>Usnea articulata</i>	String-of-sausage Lichen	Lichens
<i>Creolophus cirrhatus</i>	Tiered Tooth fungus	Fungi
<i>Lobaria pulmonaria</i>	Tree Lungwort	Lichens
<i>Oxyrrhynchium schleicheri</i>	Twist-tip Feather-moss	Mosses
<i>Sarcosphaera coronaria</i>	Violet Crowncup	Fungi
<i>Epipactis purpurea</i>	Violet Helleborine	Flowering Plants
<i>Cortinarius violaceus</i>	Violet Webcap	Fungi
<i>Barbastella barbastellus</i>	Western Barbastelle	Mammals
<i>Limenitis camilla</i>	White Admiral	Butterflies
<i>Cephalanthera damasonium</i>	White Helleborine	Flowering Plants
<i>Satyrion w-album</i>	White-letter Hairstreak	Butterflies

Scientific Name	Common Name	Taxon
<i>Phylloscopus trochilus</i>	Willow Warbler	Birds
<i>Carpatolechia decorella</i>	Winter Oak Groundling	Moths
<i>Usnea florida</i>	Witches' Whiskers Lichen	Lichens
<i>Clinopodium menthifolium</i>	Wood Calamint	Flowering Plants
<i>Nemobius sylvestris</i>	Wood Cricket	Crickets and Grasshoppers
<i>Scolopax rusticola</i>	Woodcock	Birds
<i>Monotropa hypopitys</i>	Yellow Bird's-nest	Flowering Plants
<i>Hydnellum concrescens</i>	Zoned Tooth Fungus	Fungi

2.2.2. Chalk Assemblage

This assemblage is supported by measures given under Lowland Grassland and Heath, prioritising large-scale recovery of habitat quality from chalk soils outside existing designations, through de-intensified agricultural practices, nutrient controls, grazing, seedbank management including the conservation management of chalk arable, and the development of transitional zones from sward to scrub, and from bare ground to sward. Excavated features such as quarries and chalk pits are identified as high value sites for key species and more open habitats are to be exposed within plantation woodland on chalk. The importance of bare chalk and skeletal sward is emphasised, on chalk cliffs, field margins, tracks and roadside verges, and in urban settings such as calcareous brownfield sites (e.g. crushed concrete). Remaining limestone grassland sites are to be actively searched for on the northern plateau.



Adonis Blue. Photography Lewis Hooper.



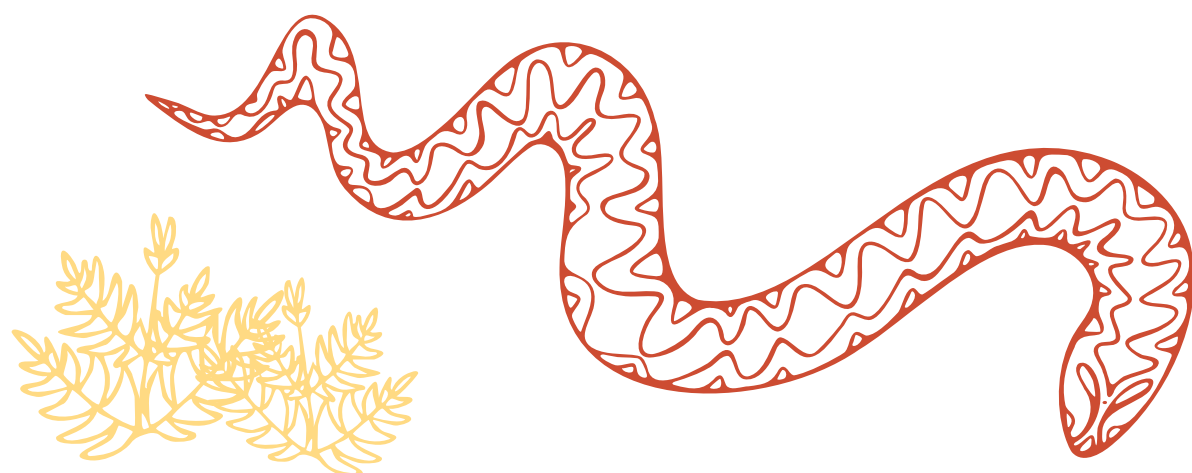
Illustrations: Dandelion (*Taraxacum*); White-letter Hairstreak (*Satyrus w-album*)

Table 5: Species within the Chalk Assemblage

Scientific Name	Common Name	Taxon
<i>Mecyna flavalis flaviculalis</i>	A Moth	Moths
<i>Physcia clementei</i>	A Rosette Lichen	Lichens
<i>Heterogaster artemisiae</i>	A Seed Bug	True Bugs
<i>Squamaria cartilaginea</i>	A Shield / Rim Lichen	Lichens
<i>Vipera berus</i>	Adder	Reptiles
<i>Polyommatus bellargus</i>	Adonis Blue	Butterflies
<i>Andrena alfkenella</i>	Alfken's Mini-miner	Bees
<i>Thesium humifusum</i>	Bastard Toadflax	Flowering Plants
<i>Puccinia thesii</i>	Bastard Toadflax Rust	Fungi
<i>Canthophorus impressus</i>	Bastard-toadflax Bug	True Bugs
<i>Scotopteryx bipunctaria crenata</i>	Chalk Carpet	Moths
<i>Polyommatus coridon</i>	Chalk Hill Blue	Butterflies
<i>Polygala calcarea</i>	Chalk Milkwort	Flowering Plants
<i>Seligeria calcarea</i>	Chalk Rock-bristle	Mosses
<i>Epermenia insecurella</i>	Chalk-hill Lance-Wing	Moths
<i>Thereva strigata</i>	Cliff Stiletto Fly	True Flies
<i>Argynnis aglaja</i>	Dark Green Fritillary	Butterflies
<i>Curruca undata</i>	Dartford Warbler	Birds
<i>Setina irrorella</i>	Dew Moth	Moths

Scientific Name	Common Name	Taxon
<i>Filipendula vulgaris</i>	Dropwort	Flowering
<i>Cerastium pumilum</i>	Dwarf Mouse-ear	Flowering Plants
<i>Carex humilis</i>	Dwarf Sedge	Flowering Plants
<i>Gentianella anglica</i>	Early Gentian	Flowering Plants
<i>Ophrys sphegodes</i>	Early Spider Orchid	Flowering
<i>Gryllus campestris</i>	Field Cricket	Crickets and Grasshoppers
<i>Allium oleraceum</i>	Field Garlic	Flowering Plants
<i>Coeloglossum viride</i>	Frog Orchid	Flowering Plants
<i>Teloschistes chrysophthalmus</i>	Golden-eye Lichen	Lichens
<i>Hipparchia semele</i>	Grayling	Butterflies
<i>Pyrgus malvae</i>	Grizzled Skipper	Butterflies
<i>Arabis hirsuta</i>	Hairy Rockcress	Flowering Plants
<i>Valerianella eriocarpa</i>	Hairy-fruited Cornsalad	Flowering Plants
<i>Matthiola incana</i>	Hoary Stock	Flowering Plants
<i>Juniperus communis</i>	Juniper	Conifers
<i>Orobancha elatior</i>	Knapweed Broomrape	Flowering Plants
<i>Chiasmia clathrata</i>	Latticed Heath	Moths
<i>Urophora solstitialis</i>	Nodding Thistle Gall Fly	Flies
<i>Orobancha picridis</i>	Oxtongue Broomrape	Flowering Plants
<i>Idaea degeneraria</i>	Portland Ribbon Wave	Moths

Scientific Name	Common Name	Taxon
<i>Euphorbia portlandica</i>	Portland Spurge	Flowering Plants
<i>Catarhoe rubidata</i>	Ruddy Carpet	Moths
<i>Tortella inflexa</i>	Sassari Crisp-moss	Mosses
<i>Fulgensia fulgens</i>	Scrambled Egg Lichen	Lichens
<i>Pilosella peleteriana</i>	Shaggy Mouse-Ear-Hawkweed	Flowering Plants
<i>Bembecia ichneumoniformis</i>	Six-belted Clearwing	Moths
<i>Didymodon acutus</i>	Slender Beard-moss	Mosses
<i>Vicia parviflora</i>	Slender Tare	Flowering Plants
<i>Andrena marginata</i>	Small Scabious Mining Bee	Bees
<i>Mnium stellare</i>	Starry Thyme-moss	Mosses
<i>Ectobius pallidus</i>	Tawny Cockroach	Cockroaches
<i>Mimesa bicolor</i>	Two-coloured Mimic Wasp	Wasps
<i>Terellia winthemi</i>	Wetted Thistle Fly	Flies
<i>Salvia verbenaca</i>	Wild Clary	Flowering Plants

Illustration: Adder (*Vipera berus*)

2.2.3. Heath and Acid Grassland Assemblage

This assemblage is covered by measures listed under Lowland Grassland and Heath, with similar specifications to the chalk assemblage, boosting ecological value by reducing nutrient impacts on grassland, recovering seedbanks through 'conservation arable', positive management of excavated landscape features such as quarries and sand pits, and through the creation of more diverse habitat mosaics, particularly on the Upper Greensand slopes where agricultural improvement is likely to be reduced and soil transitions more marked. Work to recover various heathland types (for example meadow heaths and mires, gravel cap heaths) from large plantation woodlands are prioritised, extending open space habitats in rides, glades and clearings.



Dodder. Photography by Ian Boyd.

Table 6: Species within the Heath and Acid Grassland Assemblage

Scientific Name	Common Name	Taxon
<i>Drymus latus</i>	A Ground Bug	True Bugs
<i>Scleranthus annuus</i>	Annual Knawel	Flowering Plants
<i>Vaccinium myrtillus</i>	Bilberry	Flowering Plants
<i>Erigeron acris</i>	Blue Fleabane	Flowering Plants
<i>Agrostis curtisii</i>	Bristle Bent	Flowering Plants
<i>Centunculus minimus</i>	Chaffweed	Flowering Plants
<i>Trifolium glomeratum</i>	Clustered Clover	Flowering Plants
<i>Cuscuta epithymum</i>	Dodder	Flowering Plants
<i>Carex pulicaris</i>	Flea Sedge	Flowering Plants
<i>Viola canina</i>	Heath Dog Violet	Flowering Plants
<i>Polygala serpyllifolia</i>	Heath Milkwort	Flowering Plants
<i>Sagina subulata</i>	Heath Pearlwort	Flowering Plants
<i>Briza minor</i>	Lesser Quaking-grass	Flowering Plants
<i>Pedicularis sylvatica</i>	Lousewort	Flowering Plants
<i>Hypenodes humidalis</i>	Marsh Oblique-barred	Moths
<i>Nardus stricta</i>	Mat-grass	Flowering Plants
<i>Myrmeleotettix maculatus</i>	Mottled Grasshopper	Grasshoppers and Crickets
<i>Viola lactea</i>	Pale Dog Violet	Flowering Plants
<i>Boloria euphrosyne</i>	Pearl-bordered Fritillary	Butterflies

Scientific Name	Common Name	Taxon
<i>Pilularia globulifera</i>	Pillwort	Ferns
<i>Acosmetia caliginosa</i>	Reddish Buff	Moths
<i>Cerceris ruficornis</i>	Red-legged Digger Wasp	Wasps
<i>Urophora spoliata</i>	Saw-wort Fly	Flies
<i>Jasione montana</i>	Sheep's-bit Scabious	Flowering Plants
<i>Filago minima</i>	Small Cudweed	Flowering Plants
<i>Achillea ptarmica</i>	Sneezewort	Flowering Plants
<i>Vicia lathyroides</i>	Spring Vetch	Flowering Plants
<i>Trifolium suffocatum</i>	Suffocated Clover	Flowering Plants
<i>Moenchia erecta</i>	Upright Chickweed	Flowering Plants
<i>Orobanche purpurea</i>	Yarrow Broomrape	Flowering Plants

Illustration: Mottled Grasshopper (*Myrmeleotettix maculatus*)



2.2.4. Lowland Meadows Assemblage

This small and specialised assemblage is from the complex variety of clay soils in the north of the Island, that produce heath, mire and meadow habitats, often within a surrounding woodland matrix. It includes the very rare invertebrate community associated with Dyers Greenweed. This assemblage is covered by measures within both the Trees and Woodland and the Lowland Grassland and Heath priorities. Specifications encourage a mix of cutting regimes, to widen and maintain rides, glades and clearings where these habitats appear in plantation woodlands, and to enhance the ecological value of churchyards, historic and military grounds where sympathetic management has conserved small fragments but where there is still scope for improvement and extension.



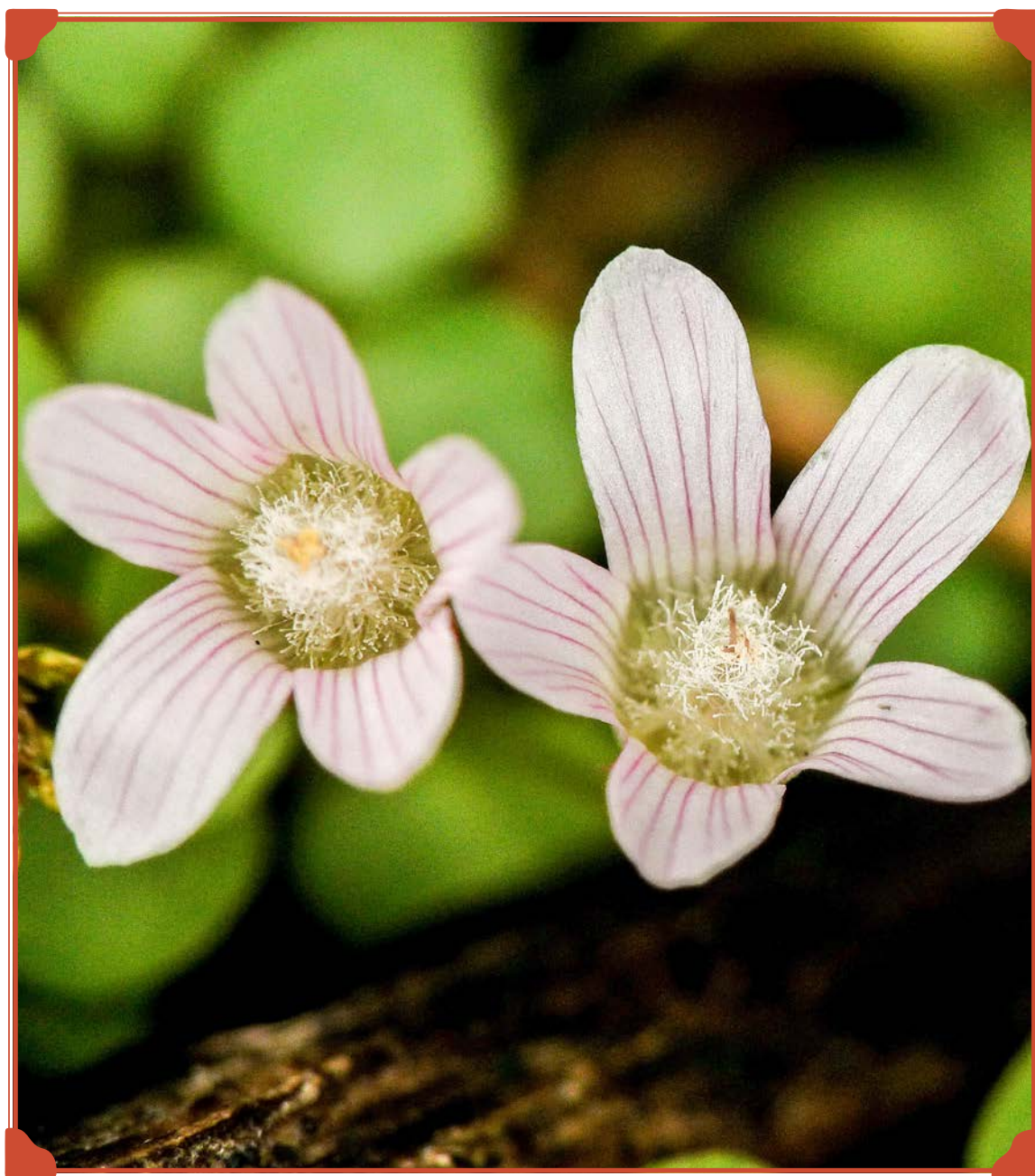
Adder's-Tongue and Common Orchid. Photography by Ian Boyd.

Table 7: Species within the Lowland Meadows Assemblage

Scientific Name	Common Name	Taxon
<i>Meligethes bidentatus</i>	A Pollen Beetle	Beetles
<i>Aulonia albimana</i>	A Wolf Spider	Spiders
<i>Aproaerema vinella</i>	Brighton Sober	Moths
<i>Chamaemelum nobile</i>	Chamomile	Flowering Plants
<i>Terellia vectensis</i>	Colin's Saw-wort Fly	Flies
<i>Lampyris noctiluca</i>	Glow Worm	Beetles
<i>Agonopterix atomella</i>	Greenweed Flat-body Moth	Moths
<i>Trifurcula beirnei</i>	Greenweed Pigmy Moth	Moths
<i>Coleophora vibicella</i>	Large Gold Case-bearer	Moths
<i>Cirsium dissectum</i>	Meadow Thistle	Flowering Plants
<i>Microglossum olivaceum</i>	Olive Earthtongue	Fungi
<i>Porpolomopsis calyptriformis</i>	Pink Ballerina	Fungi
<i>Acinia corniculata</i>	Scarce Knapweed Fly	Flies
<i>Parentucellia viscosa</i>	Yellow Bartsia	Flowering Plants

2.2.5. Bogs Assemblage

This rare assemblage is supported by measures given in Catchments and Rivers, specifically those focussing on headwater regions and peat soils. The key actions are to manage both water levels and water quality to ensure good underlying conditions for these habitats and species to survive. This requires preventing artificial nutrient flows into bog sites and ensuring ground and surface water flows can be sustained. Management of site vegetation is needed to prevent wholesale scrub encroachment, and this may involve cutting, grazing or mechanical excavation.



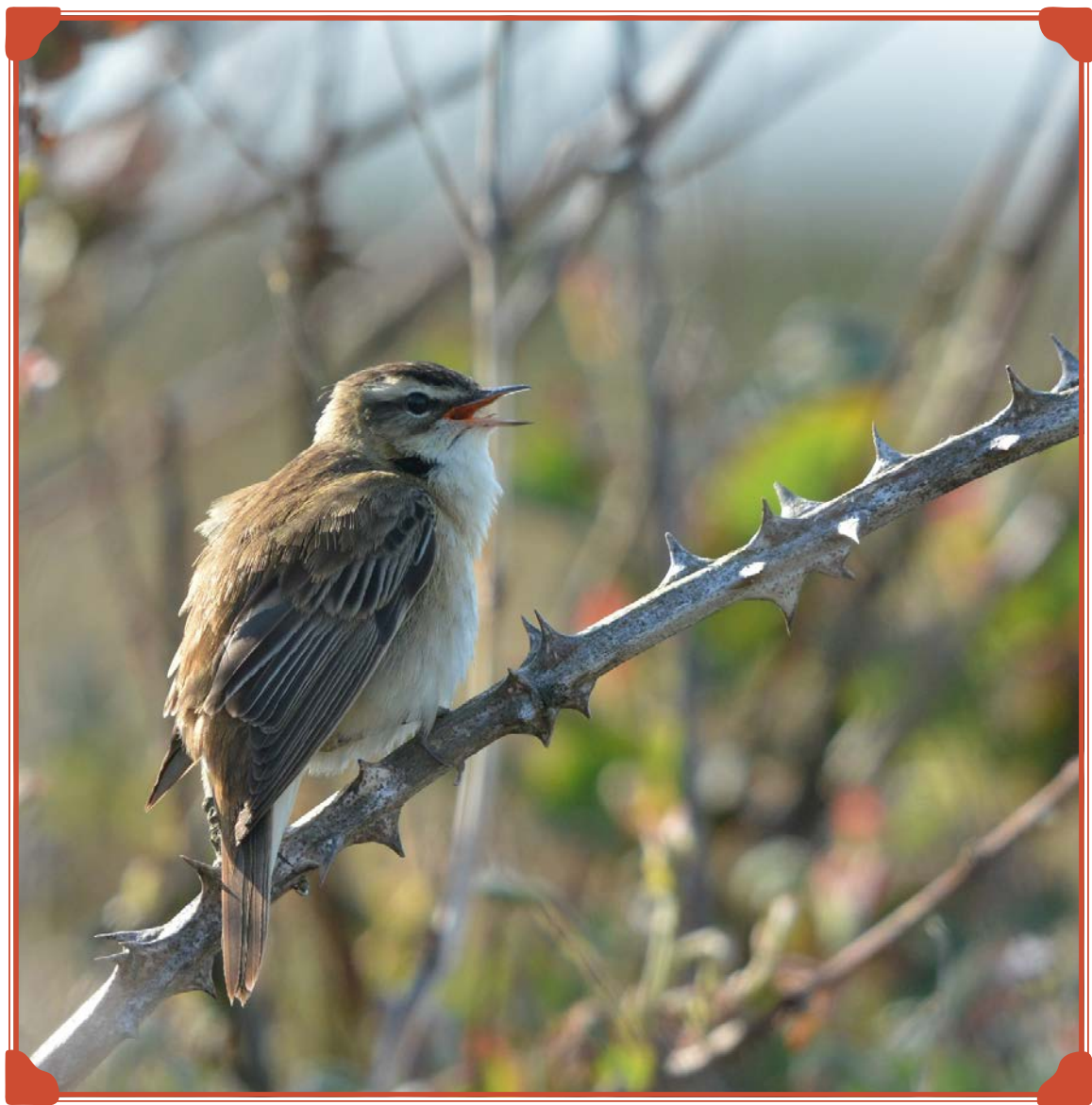
Bog Pimpernel. Photography by Ian Boyd.

Table 8: Species within the Bogs Assemblage

Scientific Name	Common Name	Taxon
<i>Narthecium ossifragum</i>	Bog Asphodel	Flowering Plants
<i>Riccardia latifrons</i>	Bog Germanderwort	Liverworts
<i>Myrica gale</i>	Bog Myrtle	Flowering Plants
<i>Anagallis tenella</i>	Bog Pimpernel	Flowering Plants
<i>Cephalozia macrostachya</i>	Bog Pincerwort	Liverworts
<i>Potamogeton polygonifolius</i>	Bog Pondweed	Flowering Plants
<i>Eriophorum angustifolium</i>	Common Cottongrass	Flowering Plants
<i>Erica tetralix</i>	Cross-leaved Heath	Flowering Plants
<i>Sphagnum cuspidatum</i>	Feathery Bog-moss	Mosses
<i>Sphagnum fallax</i>	Flat-topped Bog-moss	Mosses
<i>Wahlenbergia hederacea</i>	Ivy-leaved Bellflower	Flowering Plants
<i>Eleocharis multicaulis</i>	Many-stalked Spike-rush	Flowering Plants
<i>Viola palustris</i>	Marsh Violet	Flowering Plants
<i>Pinguicula lusitanica</i>	Pale Butterwort	Flowering Plants
<i>Sphagnum papillosum</i>	Papillose Bog-moss	Mosses
<i>Genista anglica</i>	Petty Whin	Flowering Plants
<i>Sphagnum capillifolium</i>	Red Bog-moss	Mosses
<i>Drosera rotundifolia</i>	Round-leaved Sundew	Flowering Plants
<i>Carex echinata</i>	Star Sedge	Flowering Plants
<i>Carex canescens</i>	White Sedge	Flowering Plants

2.2.6. Floodplain Assemblage

This assemblage is dominated by flowering plants favouring a variety of valley wetland habitat types within the mid and lower catchment mosaics, including ditch systems and ponds, reedbeds and fens, grazing marsh and rush pasture. The Catchment and River measures provide key actions to maintain and enhance these populations, by reconnecting rivers with their floodplains, restoring systems of ground and surface water flow, alongside the appropriate management of vegetation, through cutting, grazing, or excavation (for example new pond creation). Critical to the success of all of these measures, however, is the improvement of water quality through the reduction of excess nutrient enrichment as inundation of valuable conservation sites with contaminated water is likely to result in species loss.



Sedge Warbler. Photography by Lewis Hooper.

Table 9: Species within the Floodplain Assemblage

Scientific Name	Common Name	Taxon
<i>Microvelia pygmaea</i>	A Ripple Bug	True Bugs
<i>Telmatophilus brevicollis</i>	A Silken Fungus Beetle	Beetles
<i>Oxytelus piceus</i>	A Spiny-legged Rove Beetle	Beetles
<i>Myriophyllum alterniflorum</i>	Alternate Water Milfoil	Flowering Plants
<i>Calopteryx virgo</i>	Beautiful Demoiselle	Dragonflies and Damselflies
<i>Botaurus stellaris</i>	Bittern	Birds
<i>Sedina buettneri</i>	Blair's Wainscot	Moths
<i>Callitriche obtusangula</i>	Blunt-fruited Water Starwort	Flowering Plants
<i>Potamogeton obtusifolius</i>	Blunt-leaved Pondweed	Flowering Plants
<i>Menyanthes trifoliata</i>	Bogbean	Flowering Plants
<i>Carex rostrata</i>	Bottle Sedge	Flowering Plants
<i>Carex panicea</i>	Carnation Sedge	Flowering Plants
<i>Hygroamblystegium humile</i>	Constricted Feather-moss	Mosses
<i>Myosotis secunda</i>	Creeping Forget-me-not	Flowering Plants
<i>Carex pseudocyperus</i>	Cyperus Sedge	Flowering Plants
<i>Lemna gibba</i>	Fat Duckweed	Flowering Plants
<i>Eleogiton fluitans</i>	Floating Club-rush	Flowering Plants
<i>Cordulegaster boltonii</i>	Golden-ringed Dragonfly	Dragonflies and Damselflies

Scientific Name	Common Name	Taxon
<i>Spirodela polyrhiza</i>	Greater Duckweed	Flowering Plants
<i>Ranunculus lingua</i>	Greater Spearwort	Flowering Plants
<i>Brachytron pratense</i>	Hairy Dragonfly	Dragonflies and Damselflies
<i>Vanellus vanellus</i>	Lapwing	Birds
<i>Apium inundatum</i>	Lesser Marshwort	Flowering Plants
<i>Berula erecta</i>	Lesser Water-parsnip	Flowering Plants
<i>Baldellia ranunculoides</i>	Lesser Water-plantain	Flowering Plants
<i>Charadrius dubius</i>	Little Ringed Plover	Birds
<i>Carex viridula subsp brachyrryncha</i>	Long-stalked Yellow Sedge	Flowering Plants
<i>Hippuris vulgaris</i>	Marestail	Flowering Plants
<i>Triglochin palustre</i>	Marsh Arrowgrass	Flowering Plants
<i>Potentilla palustris</i>	Marsh Cinquefoil	Flowering Plants
<i>Thelypteris palustris</i>	Marsh Fern	Ferns
<i>Circus aeruginosus</i>	Marsh Harrier	Birds
<i>Hydrocotyle vulgaris</i>	Marsh Pennywort	Flowering Plants
<i>Valeriana dioica</i>	Marsh Valerian	Flowering Plants
<i>Dryopteris carthusiana</i>	Narrow Buckler-fern	Ferns
<i>Anaciaeschna isoceles</i>	Norfolk Hawker	Dragonflies and Damselflies
<i>Groenlandia densa</i>	Opposite-leaved Pondweed	Flowering Plants

Scientific Name	Common Name	Taxon
<i>Alopecurus aequalis</i>	Orange Foxtail	Flowering Plants
<i>Glyceria notata</i>	Plicate Sweet-grass	Flowering Plants
<i>Aythya ferina</i>	Pochard	Birds
<i>Tringa totanus</i>	Redshank	Birds
<i>Libellula fulva</i>	Scarce Chaser	Dragonflies and Damselflies
<i>Acrocephalus schoenobaenus</i>	Sedge Warbler	Birds
<i>Spatula clypeata</i>	Shoveler	Birds
<i>Lotus angustissimus</i>	Slender Bird's-foot-trefoil	Flowering Plants
<i>Isolepis cernua</i>	Slender Club-rush	Flowering Plants
<i>Eleocharis uniglumis</i>	Slender Spike-rush	Flowering Plants
<i>Carex acuta</i>	Slender Tufted Sedge	Flowering Plants
<i>Persicaria minor</i>	Small Water-pepper	Flowering Plants
<i>Gallinago gallinago</i>	Snipe	Birds
<i>Anas crecca</i>	Teal	Birds
<i>Ranunculus trichophyllus</i>	Thread-leaved Water-crowfoot	Flowering Plants
<i>Oenanthe fistulosa</i>	Tubular Water Dropwort	Flowering Plants
<i>Rumex hydrolapathum</i>	Water Dock	Flowering Plants
<i>Equisetum sylvaticum</i>	Wood Horsetail	Ferns
<i>Nuphar lutea</i>	Yellow Water-lily	Flowering Plants

2.2.7. Rivers Assemblage

As for floodplains, this assemblage is supported by measures in the Catchment and River priority. Key to these is the removal of obstructions to fish passage, especially affecting migratory species moving upstream from estuaries, but also reducing the dispersal of resident populations of freshwater fish and invertebrates. Good management of in-stream and bankside habitats is set



European Eel. Photography by Theo Vickers.

out, to create riparian corridors with wide herbaceous margins, patchy tree and scrub cover, clean aggregate and sediment beds, woody debris and tree roots, cattle-poached margins and river cliffs. Improving water quality in Island rivers is fundamental to all of this.

Table 10: Species within the Rivers Assemblage

Scientific Name	Common Name	Taxon
<i>Lampetra planeri</i>	Brook Lamprey	Fish
<i>Cottus gobio</i>	Bullhead	Fish
<i>Anguilla anguilla</i>	European Eel	Fish
<i>Arvicola terrestris</i>	European Water Vole	Mammals
<i>Alcedo atthis</i>	Kingfisher	Birds
<i>Lampetra fluviatilis</i>	River Lamprey	Fish
<i>Petromyzon marinus</i>	Sea Lamprey	Fish
<i>Salmo trutta</i>	Sea Trout	Fish

2.2.8. Farm Mosaic Assemblage

This assemblage relates to a mixed lowland farm landscape, with intact hedgerow networks, small farm woodlands, semi-natural grasslands, ditches and ponds spread through a wider matrix of agriculturally improved and cultivated ground. The management measures seek to maximise the value of habitat fragments and corridors, improving their quality and connectivity, whilst at the same time combining farm production of food, energy and minerals with ecological enhancement, 'land sparing' on grassland and arable headlands, allowing scrub mosaics and habitat transitions to develop, and conserving bare ground and early successional features (quarried fields for example).



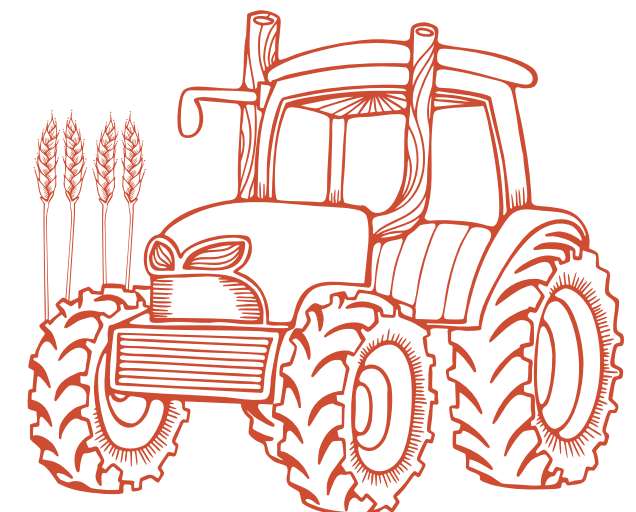
Dense-flowered Fumitory. Photography by Ian Boyd.

Table 11: Species within the Farm Mosaic Assemblage

Scientific Name	Common Name	Taxon
<i>Tyto alba</i>	Barn Owl	Birds
<i>Valerianella rimosa</i>	Broad-fruited Cornsalad	Flowering Plants
<i>Lepus europaeus</i>	Brown Hare	Mammals

Scientific Name	Common Name	Taxon
<i>Emberiza calandra</i>	Corn Bunting	Birds
<i>Glebionis segetum</i>	Corn Marigold	Flowering Plants
<i>Centaurea cyanus</i>	Cornflower	Flowering Plants
<i>Fumaria densiflora</i>	Dense-flowered Fumitory	Flowering Plants
<i>Fumaria vaillantii</i>	Few-flowered Fumitory	Flowering Plants
<i>Melampyrum arvense</i>	Field Cow-wheat	Flowering Plants
<i>Anthoceros agrestis</i>	Field Hornwort	Hornworts
<i>Fumaria parviflora</i>	Fine-leaved Fumitory	Flowering Plants
<i>Microbryum floerkeanum</i>	Floerke's Phascum	Mosses
<i>Veronica agrestis</i>	Green Field Speedwell	Flowering Plants
<i>Perdix perdix</i>	Grey Partridge	Birds
<i>Micromys minutus</i>	Harvest Mouse	Mammals
<i>Linaria cannabina</i>	Linnet	Birds
<i>Apera spica-venti</i>	Loose Silky-bent	Flowering Plants
<i>Fumaria reuteri</i>	Martin's Ramping-fumitory	Flowering Plants
<i>Valerianella dentata</i>	Narrow-fruited Cornsalad	Flowering Plants
<i>Silene noctiflora</i>	Night-flowering Catchfly	Flowering Plants
<i>Chenopodium glaucum</i>	Oak-leaved Goosefoot	Flowering Plants
<i>Papaver argemone</i>	Prickly Poppy	Flowering Plants
<i>Fumaria purpurea</i>	Purple Ramping-fumitory	Flowering Plants

Scientific Name	Common Name	Taxon
<i>Papaver hybridum</i>	Rough Poppy	Flowering Plants
<i>Alauda arvensis</i>	Skylark	Birds
<i>Chaenorhinum minus</i>	Small Toadflax	Flowering Plants
<i>Silene gallica</i>	Small-flowered Catchfly	Flowering Plants
<i>Torilis arvensis</i>	Spreading Hedge Parsley	Flowering Plants
<i>Myosurus minimus</i>	Mousetail	Flowering Plants
<i>Streptopelia turtur</i>	Turtle Dove	Birds
<i>Chenopodium urbicum</i>	Upright Goosefoot	Flowering Plants
<i>Chenia leptophylla</i>	Vectis-moss	Mosses
<i>Legousia hybrida</i>	Venus's-looking-glass	Flowering Plants
<i>Misopates orontium</i>	Weasel's-snout	Flowering Plants
<i>Emberiza citrinella</i>	Yellowhammer	Birds





2.2.9. Maritime Soft Cliffs Assemblage

Advocating for continuing natural coastal process is essential to this assemblage, allowing for the continuing renewal of the complex mosaic of geology, aspect, vegetated and bare ground, seasonal pools and seepages. The positive conservation management of wide cliff-top margins is promoted, creating space for cliff retreat and adding supplementary nesting, feeding and overwintering habitats; this includes the role of cultivated ground. This idea is taken further by considering other hinterland zones which might provide expansion capacity for some species, creating combinations of bare ground, temporary pools, and mixed geology.



Dusky Cockroach. Photography by Ian Boyd.

Table 12: Species within the Maritime Soft Cliffs Assemblage

Scientific Name	Common Name	Taxon
<i>Cathormiocerus socius</i>	A Broad-nosed Weevil	Beetles
<i>Otiorhynchus ligustici</i>	A Broad-nosed Weevil	Beetles
<i>Crossidium squamiferum</i>	A Bryophyte	Mosses
<i>Agriotes sordidus</i>	A Click Beetle	Beetles
<i>Hypera ononidis</i>	A Cocoon Weevil	Beetles
<i>Dicranomyia goritiensis</i>	A Crane Fly	Flies
<i>Dicranomyia lackschewitzi</i>	A Crane Fly	Flies
<i>Baris analis</i>	A Flower Weevil	Beetles
<i>Trupanea amoena</i>	A Fruit Fly	Flies
<i>Bembidion andreae</i>	A Ground Beetle	Beetles
<i>Elaphrus uliginosus</i>	A Ground Beetle	Beetles
<i>Ophonus cordatus</i>	A Ground Beetle	Beetles
<i>Ophonus parallelus</i>	A Ground Beetle	Beetles
<i>Philorhizus vectensis</i>	A Ground Beetle	Beetles
<i>Polistichus connexus</i>	A Ground Beetle	Beetles
<i>Callilepis nocturna</i>	A Ground Spider	Spiders
<i>Cryptolechia carneolutea</i>	A Lichen	Lichens
<i>Myrmecoris gracilis</i>	A Plant Bug	True Bugs
<i>Halobrecta princeps</i>	A Rove Beetle	Beetles

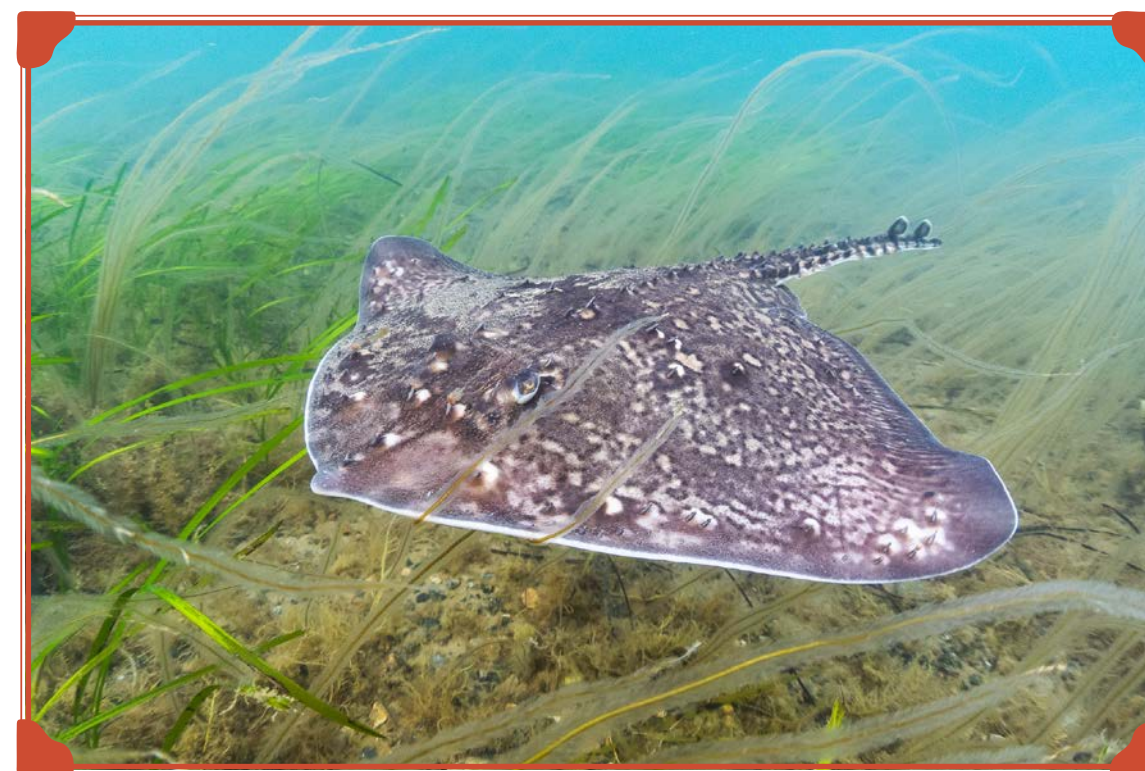
Scientific Name	Common Name	Taxon
<i>Medon pocofer</i>	A Rove Beetle	Beetles
<i>Bledius crassicolis</i>	A Spiny-legged Rove Beetle	Beetles
<i>Thinobius brevipennis</i>	A Spiny-legged Rove Beetle	Beetles
<i>Tachysphex unicolor sens. str.</i>	A Square-headed Wasp	Wasps
<i>Heterocerus fuscus</i>	A Variegated Mud-loving Beetle	Beetles
<i>Mimumesa atratina</i>	An Aphid Wasp	Wasps
<i>Mimumesa unicolor</i>	An Aphid Wasp	Wasps
<i>Pterogonium gracile</i>	Birds-foot Wing-moss	Mosses
<i>Andrena pilipes</i>	Black Mining Bee	Bees
<i>Odynerus melanocephalus</i>	Black-headed Mason-wasp	Wasps
<i>Collema nigrescens</i>	Blistered Jelly Lichen	Lichens
<i>Philonotis marchica</i>	Bog Apple-moss	Mosses
<i>Truncatellina callicratis</i>	British Whorl Snail	Molluscs
<i>Porella obtusata</i>	Broad Scalewort	Liverworts
<i>Andrena proxima</i>	Broad-faced Mining Bee	Bees
<i>Epipactis helleborine</i>	Broad-leaved Helleborine	Flowering Plants
<i>Bryum canariense</i>	Canary Thread-moss	Mosses
<i>Andrena nitidiuscula</i>	Carrot Mining Bee	Bees

Scientific Name	Common Name	Taxon
<i>Tetrix ceperoi</i>	Ceperoi's Groundhopper	Grasshoppers and Crickets
<i>Cephaloziella baumgartneri</i>	Chalk Threadwort	Liverworts
<i>Anostirus castaneus</i>	Chestnut Click Beetle	Beetles
<i>Drypta dentata</i>	Chine Beetle	Beetles
<i>Lasioglossum angusticeps</i>	Cliff Furrow Bee	Bees
<i>Cylindera germanica</i>	Cliff Tiger Beetle	Beetles
<i>Agrotis trux</i>	Crescent Dart	Moths
<i>Rhynchostegiella curviseta</i>	Curve-stalked Feather-moss	Mosses
<i>Anthoceros punctatus</i>	Dotted Hornwort	Hornworts
<i>Ectobius lapponicus</i>	Dusky Cockroach	Cockroaches
<i>Aporophyla australis pascuea</i>	Feathered Brindle	Moths
<i>Melitaea cinxia</i>	Glanville Fritillary	Butterflies
<i>Pempelia genistella</i>	Gorse Knot-horn	Moths
<i>Southbya nigrella</i>	Green Blackwort	Liverworts
<i>Platycleis albopunctata</i>	Grey Bush-cricket	Grasshoppers and Crickets
<i>Cephaloziella hampeana</i>	Hampe's Threadwort	Liverworts
<i>Orthetrum coerulescens</i>	Keeled Skimmer	Dragonflies and Damselflies
<i>Forficula lesnei</i>	Lesne's Earwig	Earwigs
<i>Ectobius panzeri</i>	Lesser Cockroach	Cockroaches

Scientific Name	Common Name	Taxon
<i>Eucera longicornis</i>	Long-horned Mining Bee	Bees
<i>Marchesinia mackaii</i>	MacKay's Pouncewort	Liverworts
<i>Epipactis palustris</i>	Marsh Helleborine	Flowering Plants
<i>Silene nutans</i>	Nottingham Catchfly	Flowering Plants
<i>Pterygoneurum ovatum</i>	Oval-leaved Pottia	Mosses
<i>Anthophora retusa</i>	Potter Flower Bee	Bees
<i>Cololejeunea rossettiana</i>	Rossetti's Pouncewort	Liverworts
<i>Osmunda regalis</i>	Royal Fern	Ferns
<i>Trachysphaera lobata</i>	Sand Pill-millipede	Millipedes
<i>Saldula arenicola</i>	Sandy Shorebug	True Bugs
<i>Rhynchostegiella litorea</i>	Scabrous Feather-moss	Mosses
<i>Ischnura pumilio</i>	Scarce Blue-tailed Damselfly	Dragonflies and Damselflies
<i>Phaeoceros laevis</i>	Smooth Hornwort	Lichens
<i>Microbryum starckeanum</i>	Starke's Pottia	Mosses
<i>Weissia sterilis</i>	Sterile Beardless-moss	Mosses
<i>Acaulon triquetrum</i>	Triangular Pygmy moss	Mosses
<i>Bryum torquescens</i>	Twisting Thread-moss	Mosses
<i>Henia Vesuviana</i>	White-striped Centipede	Centipedes
<i>Astragalus glycyphyllos</i>	Wild Liquorice	Flowering Plants

2.2.10. Beaches, Seafronts and Seashores Assemblage

This assemblage is provided for by the set of measures under the same name but there is also cross-over with measures for Estuaries, Harbours and Transition Waters particularly for wintering waders and wildfowl and shallow-water fish species. Priority actions include better control and management of recreational disturbance to habitats and species, especially near bird nest and roost sites, and the development of new constructed habitats as part of the maintenance and renewal of marine infrastructures.



Thornback Ray. Photography by Theo Vickers.

Table 13: Species within the Beaches, Seafronts and Seashores Assemblage

Scientific Name	Common Name	Taxon
<i>Dercitus bucklandi</i>	A Demosponge	Sponges
<i>Stelletta grubii</i>	A Demosponge	Sponges

Scientific Name	Common Name	Taxon
<i>Chroicocephalus ridibundus</i>	Black-headed Gull	Birds
<i>Limosa limosa</i>	Black-tailed Godwit	Birds
<i>Raja brachyura</i>	Blonde Ray	Sharks and Rays
<i>Syngnathus typhle</i>	Broad-nosed Pipefish	Fish
<i>Phoca vitulina</i>	Common Seal	Mammals
<i>Sterna hirundo</i>	Common Tern	Birds
<i>Numenius arquata</i>	Curlew	Birds
<i>Branta bernicla bernicla</i>	Dark-bellied Brent Goose	Birds
<i>Calidris alpina</i>	Dunlin	Birds
<i>Zostera noltei</i>	Dwarf Eelgrass	Flowering Plants
<i>Zostera marina</i>	Eelgrass	Flowering Plants
<i>Ostrea edulis</i>	European Flat Oyster	Molluscs
<i>Dasyatis pastinaca</i>	European Stingray	Sharks and Rays
<i>Isozoanthus sulcatus</i>	Ginger Anemone	Sea Anemones

Scientific Name	Common Name	Taxon
<i>Halichoerus grypus</i>	Grey Seal	Mammals
<i>Capnea sanguinea</i>	Imperial Anemone	Sea Anemones
<i>Tachybaptus ruficollis</i>	Little Grebe	Birds
<i>Sterna albifrons</i>	Little Tern	Birds
<i>Hippocampus guttulatus</i>	Long-snouted Seahorse	Fish
<i>Rissoides desmaresti</i>	Mantis Shrimp	Crustaceans
<i>Ichthyæus melanocephalus</i>	Mediterranean Gull	Birds
<i>Scyliorhinus stellaris</i>	Nursehound	Sharks and Rays
<i>Haematopus ostralegus</i>	Oystercatcher	Birds
<i>Padina pavonica</i>	Peacock's Tail	Brown Algae
<i>Pleuronectes platessa</i>	Plaice	Fish
<i>Anthopleura ballii</i>	Red Speckled Anemone	Sea Anemones
<i>Charadrius hiaticula</i>	Ringed Plover	Birds
<i>Sterna dougallii</i>	Roseate Tern	Birds



Scientific Name	Common Name	Taxon
<i>Atherina presbyter</i>	Sand Smelt	Fish
<i>Calidris alba</i>	Sanderling	Birds
<i>Thalasseus sandvicensis</i>	Sandwich Tern	Birds
<i>Hippocampus hippocampus</i>	Short-snouted Seahorse	Fish
<i>Osmerus eperlanus</i>	Smelt	Fish
<i>Solea solea</i>	Sole	Fish
<i>Halicystus auricula</i>	Stalked Jellyfish	Stalked Jellyfish
<i>Calvadosia campanulata</i>	Stalked Jellyfish	Stalked Jellyfish
<i>Chelon labrosus</i>	Thick-lipped Grey Mullet	Fish
<i>Liza ramada</i>	Thin-lipped Mullet	Fish
<i>Raja clavata</i>	Thornback Ray	Sharks and Rays
<i>Anas penelope</i>	Wigeon	Birds
<i>Raja undulata</i>	Undulate Ray	Sharks and Rays

2.2.11. Saltmarsh Assemblage

This assemblage is particularly focussed on plant communities restricted to saltmarsh habitats, and the invertebrates that depend on them. Measures set out in the priority section for Estuaries, Harbours and Transitional Waters relate to saltmarshes, the main task is to make space for the habitat to expand and extend upstream, and across the floodplain, under conditions of sea level rise and coastal squeeze, and to promote opportunities to actively facilitate managed retreat and tidal incursion into areas where new saltmarsh can form.



Sea Heath. Photography by Ian Boyd.

Table 14: Species within the Saltmarsh Assemblage

Scientific Name	Common Name	Taxon
<i>Aleochara obscurella</i>	A Rove Beetle	Beetles
<i>Aphrodes aestuarinus</i>	A Typical Leafhopper	True Bugs
<i>Macrosteles fieberi</i>	A Typical Leafhopper	True Bugs
<i>Macrosteles sordidipennis</i>	A Typical Leafhopper	True Bugs
<i>Alopecurus bulbosus</i>	Bulbous Foxtail	Flowering Plants
<i>Cochlearia officinalis</i>	Common Scurvy-grass	Flowering Plants
<i>Myopites eximius</i>	Golden Samphire Gall-fly	Flies
<i>Limonium humile</i>	Lax-flowered Sea Lavender	Flowering Plants
<i>Carex extensa</i>	Long-bracted Sedge	Flowering Plants
<i>Haematopota grandis</i>	Long-horned Cleg	Flies
<i>Atriplex longipes</i>	Long-stalked Orache	Flowering Plants

Scientific Name	Common Name	Taxon
<i>Truncatella subcylindrica</i>	Looping Snail	Molluscs
<i>Calligypona reyi</i>	Rey's Planthopper	True Bugs
<i>Scopula emutaria</i>	Rosy Wave	Moths
<i>Atylotus latistriatus</i>	Saltmarsh Horsefly	Flies
<i>Oliarus leporinus</i>	Saltmarsh Lacehopper	True Bugs
<i>Anisodactylus poeciloides</i>	Saltmarsh Short-spur	Beetles
<i>Seriphidium maritimum</i>	Sea Wormwood	Flowering Plants
<i>Colletes halophilus</i>	Sea-aster Colletes Bee	Bees
<i>Frankenia laevis</i>	Sea-heath	Flowering Plants
<i>Centaurium tenuiflorum</i>	Slender Centaury	Flowering Plants
<i>Bupleurum tenuissimum</i>	Slender Hare's-ear	Flowering Plants
<i>Spartina maritima</i>	Small Cord Grass	Flowering Plants



2.2.12. Lagoons Assemblage

This small assemblage features highly specialised taxa adapted to the fluctuating salinities of coastal lagoons and is supported by the measures listed under priority section Lagoons, Dunes and Shingle Banks, a suite of habitats that often occur together and share some features. The management actions proposed are firstly to better protect and enhance the existing habitat resource, which is scarce and vulnerable, and then to actively manage retreat spaces, for species in the assemblage, and for the whole habitat, within a defined radius of action.



Starlet Sea Anemone. Photography by Robert Aguilar, Smithsonian Environmental Research Center.

Table 15: Species within the Lagoons Assemblage

Scientific Name	Common Name	Taxon
<i>Paracymus aeneus</i>	A Water Scavenger Beetle	Beetles
<i>Ruppia maritima</i>	Beaked Tasselweed	Flowering Plants
<i>Ranunculus baudotii</i>	Brackish Water-crowfoot	Flowering Plants
<i>Lamprothamnium papulosum</i>	Foxtail Stonewort	Green Algae
<i>Gammarus insensibilis</i>	Lagoon Sand Shrimp	Crustaceans
<i>Meliera Picta</i>	Saltmarsh Spotwing	Flies
<i>Ruppia cirrhosa</i>	Spiral Tasselweed	Flowering Plants
<i>Nematostella vectensis</i>	Starlet Sea Anemone	Sea Anemones
<i>Alkmaria romijni</i>	Tentacled Lagoon-Worm	Segmented Worms

2.2.13. Dune and Shingle Assemblage

These species are managed for by the Lagoons, Dunes and Shingle Banks measures covering similar proposed nature recovery works, the protection and enhancement of the core habitat resource (including better management and control of recreational disturbance) and the design and potentially construction of sites where natural or facilitated migration, expansion, and duplication of dune and shingle niches suitable for species from the assemblage to colonise might be developed.



Henbane. Photography by Ian Boyd.

Table 16: Species within the Dune and Shingle Assemblage

Scientific Name	Common Name	Taxon
<i>Apion matricela</i>	A Pear-shaped Weevil	Beetles
<i>Trigonotylus psammaecolor</i>	A Plant Bug	True Bugs
<i>Medon ripicola</i>	A Rove Beetle	Beetles

Scientific Name	Common Name	Taxon
<i>Thereva fulva</i>	A Stiletto Fly	Flies
<i>Mocuellus collinus</i>	The Isle of Wight Hopper	True Bugs
<i>Scilla autumnalis</i>	Autumn Squill	Flowering Plants
<i>Vulpia ciliata subsp. ambigua</i>	Bearded Fescue	Flowering Plants
<i>Anthriscus caucalis</i>	Bur Chervil	Flowering Plants
<i>Trifolium arvense</i>	Hare's-foot Clover	Flowering Plants
<i>Hyoscyamus niger</i>	Henbane	Flowering Plants
<i>Leymus arenarius</i>	Lyme-grass	Flowering Plants
<i>Polygonum oxyspermum</i>	Ray's Knotgrass	Flowering Plants
<i>Salsola kali</i>	Saltwort	Flowering Plants
<i>Phleum arenarium</i>	Sand Cat's-tail	Flowering Plants
<i>Elytrigia juncea</i>	Sand Couch	Flowering Plants
<i>Agrotis ripae</i>	Sand Dart	Moths
<i>Calystegia soldanella</i>	Sea Bindweed	Flowering Plants
<i>Eryngium maritimum</i>	Sea Holly	Flowering Plants
<i>Polygoum maritimum</i>	Sea Knotgrass	Flowering Plants
<i>Euphorbia paralias</i>	Sea Spurge	Flowering Plants
<i>Coleophora lassella</i>	Toad-rush Case-bearer	Moths

2.2.14. Urban Assemblage

This diverse assemblage is supported by measures listed under the Urban Green and Grey priority. There is an important focus on the use of the Enhanced Biodiversity Duty as it applies to local councils to vary public greenspace maintenance contracts in favour of creating and accumulating improved conditions for wildlife, greater habitat variety, wider niche provision, greater forage value, the right mix of native and ornamental planting alongside hard landscaping and built environment that is intentionally enhanced with fixtures, fittings, renders and extensions that support key urban species.



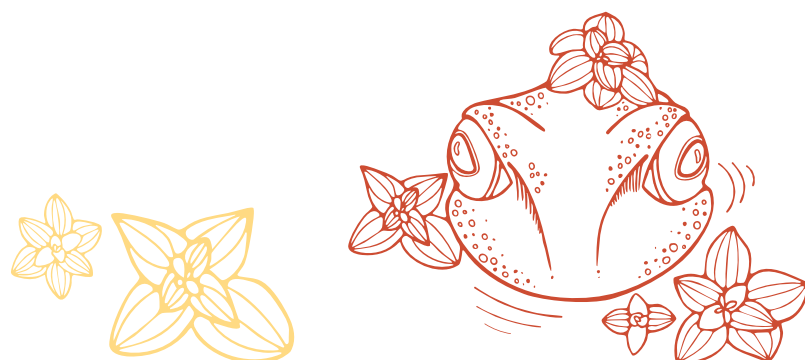
Starlings. Photography by Claire Hector.

Table 17: Species within the Urban Assemblage

Scientific Name	Common Name	Taxon
<i>Leptobarbula berica</i>	Beric Beard-moss	Mosses
<i>Pyrrhula pyrrhula</i>	Bullfinch	Birds

Scientific Name	Common Name	Taxon
<i>Hypena rostralis</i>	Buttoned Snout	Moths
<i>Zootoca vivipara</i>	Common Lizard	Reptiles
<i>Sturnus vulgaris</i>	Common Starling	Birds
<i>Bufo bufo</i>	Common Toad	Amphibians
<i>Rorippa sylvestris</i>	Creeping Yellowcress	Flowering Plants
<i>Synanthedon tipuliformis</i>	Currant Clearwing	Moths
<i>Prunella modularis</i>	Dunnock	Birds
<i>Rana temporaria</i>	Common Frog	Amphibians
<i>Arctia caja</i>	Garden Tiger	Moths
<i>Natrix helvetica</i>	Grass Snake	Reptiles
<i>Larus marinus</i>	Great Black-backed Gull	Birds
<i>Triturus cristatus</i>	Great Crested Newt	Amphibians
<i>Rhinolophus ferrumequinum</i>	Greater Horseshoe Bat	Mammals
<i>Chloris chloris</i>	Greenfinch	Birds
<i>Plecotus austriacus</i>	Grey Long-eared Bat	Mammals
<i>Larus argentatus</i>	Herring Gull	Birds
<i>Delichon urbicum</i>	House Martin	Birds
<i>Passer domesticus</i>	House Sparrow	Birds
<i>Plasteurhynchium striatulum</i>	Lesser Striated Feather-moss	Mosses
<i>Roccella phycopsis</i>	Litmus	Lichens

Scientific Name	Common Name	Taxon
<i>Himantoglossum hircinum</i>	Lizard Orchid	Flowering Plants
<i>Turdus viscivorus</i>	Mistle Thrush	Birds
<i>Pipistrellus nathusii</i>	Nathusius's Pipistrelle	Mammals
<i>Gastridium ventricosum</i>	Nit-grass	Flowering Plants
<i>Saxifraga tridactylites</i>	Rue-leaved Saxifrage	Flowering Plants
<i>Asplenium ceterach</i>	Rustyback Fern	Ferns
<i>Asplenium marinum</i>	Sea Spleenwort	Ferns
<i>Eptesicus serotinus</i>	Serotine	Mammals
<i>Turdus philomelos</i>	Song Thrush	Birds
<i>Polypodium cambricum</i>	Southern Polypody	Fungi
<i>Muscicapa striata</i>	Spotted Flycatcher	Birds
<i>Lucanus cervus</i>	Stag Beetle	Beetles
<i>Apus apus</i>	Swift	Birds
<i>Nothogeophilus turki</i>	Turk's Earth-centipede	Centipedes
<i>Lasiommata megera</i>	Wall Butterfly	Butterflies
<i>Erinaceus europaeus</i>	West European Hedgehog	Mammals

Illustration: Common Frog (*Rana temporaria*)

With Thanks to the Isle of Wight LNRS Steering Group

Published by IWC as Responsible Authority in conjunction with Natural England following appointment by Defra





Island Nature

www.islandnature.org

Written for the Isle of Wight Council
by the Island Nature Team:

Ian Boyd
Daneen Cowling
Sam Buck
Claire Hector

PUBLISHED MAY 2025

Design and Illustration by MooksGoo
www.mooksgoo.co.uk

