

# Drinking Control Area



## NEWPORT ISLE OF WIGHT

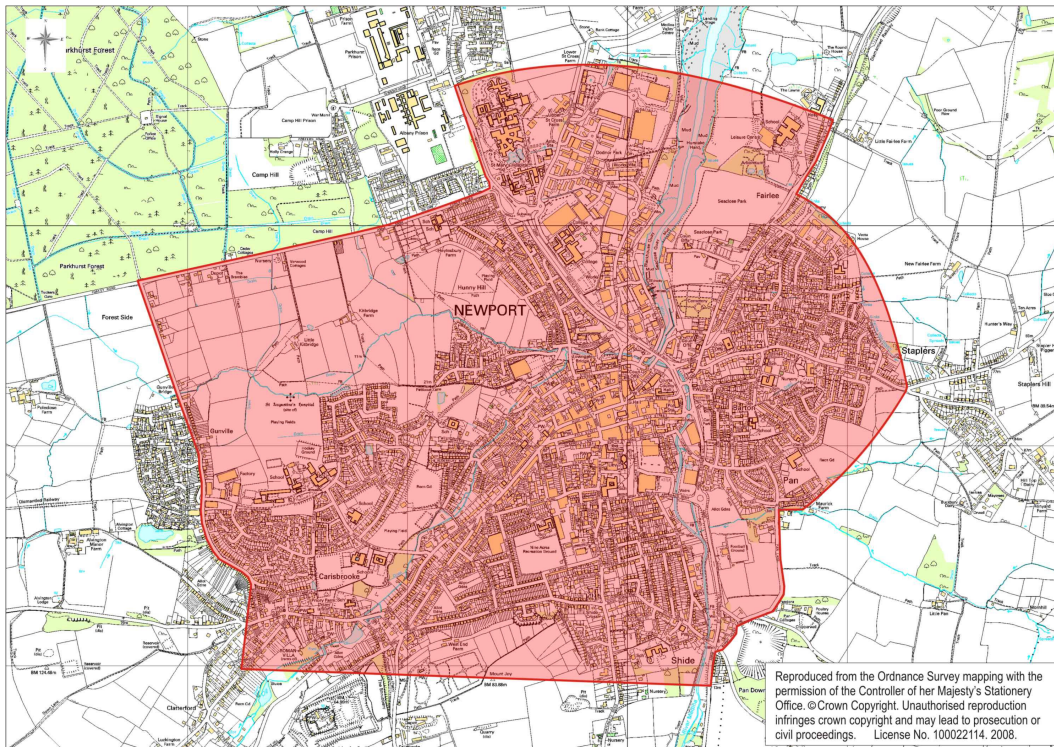
The Criminal Justice and Police Act 2001 introduced the power for Local Authorities to designate public places in which it will become an offence to drink alcohol after being requested not to do so by a Police Officer.

### **How will this affect me?**

In the designated area shown overleaf a Police Officer or a Police Community Support Officer may require you to stop drinking alcohol or anything he reasonably believes is alcohol in the public place and can confiscate and dispose of the alcohol and its container.

Failure to comply with the Police Officers request without reasonable excuse is an offence for which a person can be arrested and liable on conviction to a **maximum fine of £500**.

# The Isle of Wight Council Alcohol Consumption in Designated Public Places Order (Newport) (No 2) 2008



- This order does not apply on licensed premises while they are open for the sale of alcohol and for 30 minutes after.

For more information:

[www.iwight.com/licensing](http://www.iwight.com/licensing)



ISLE of  
WIGHT  
COUNCIL