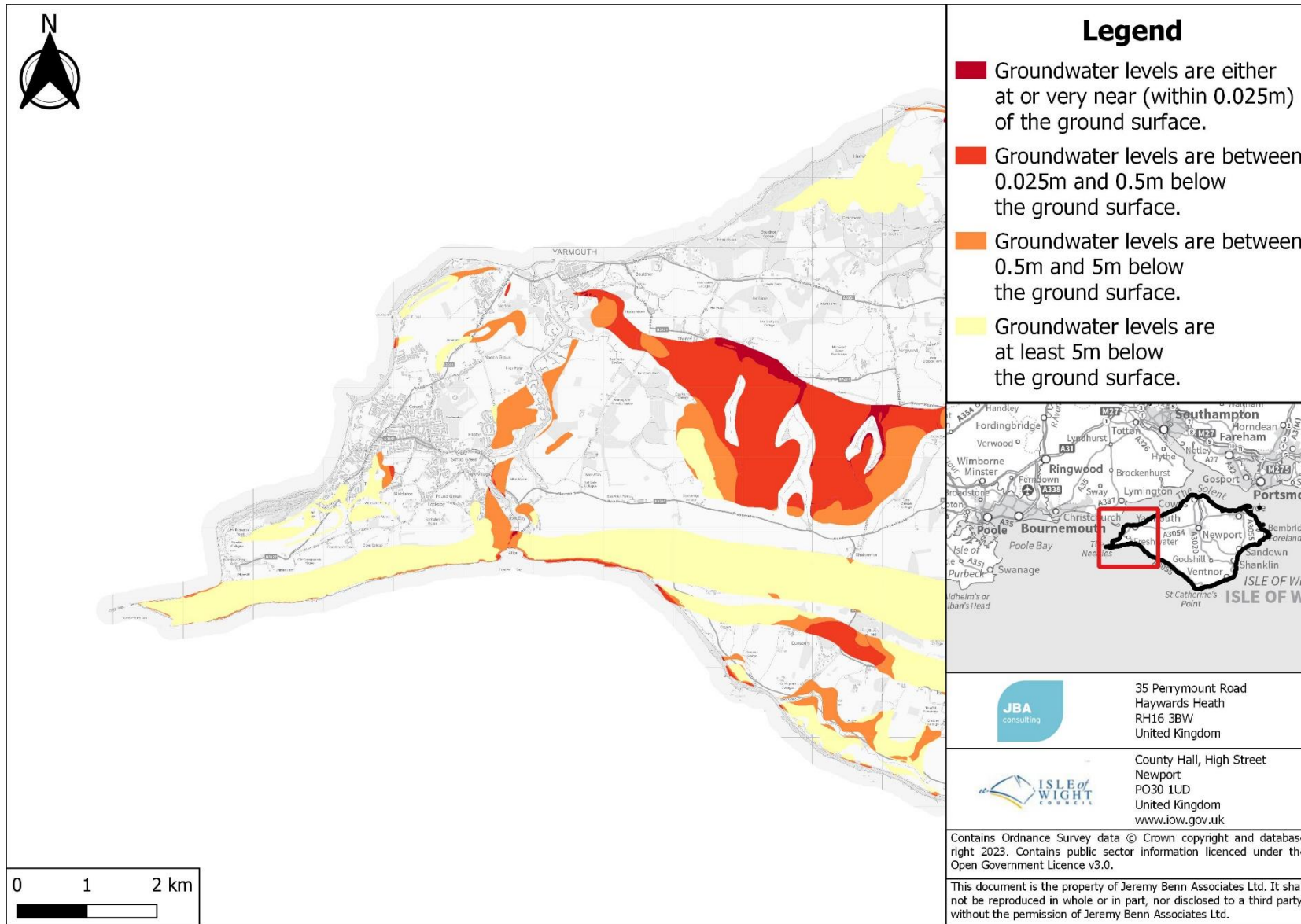
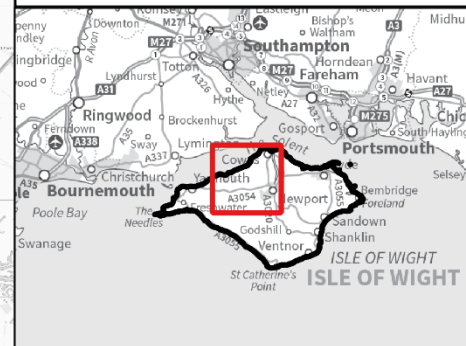
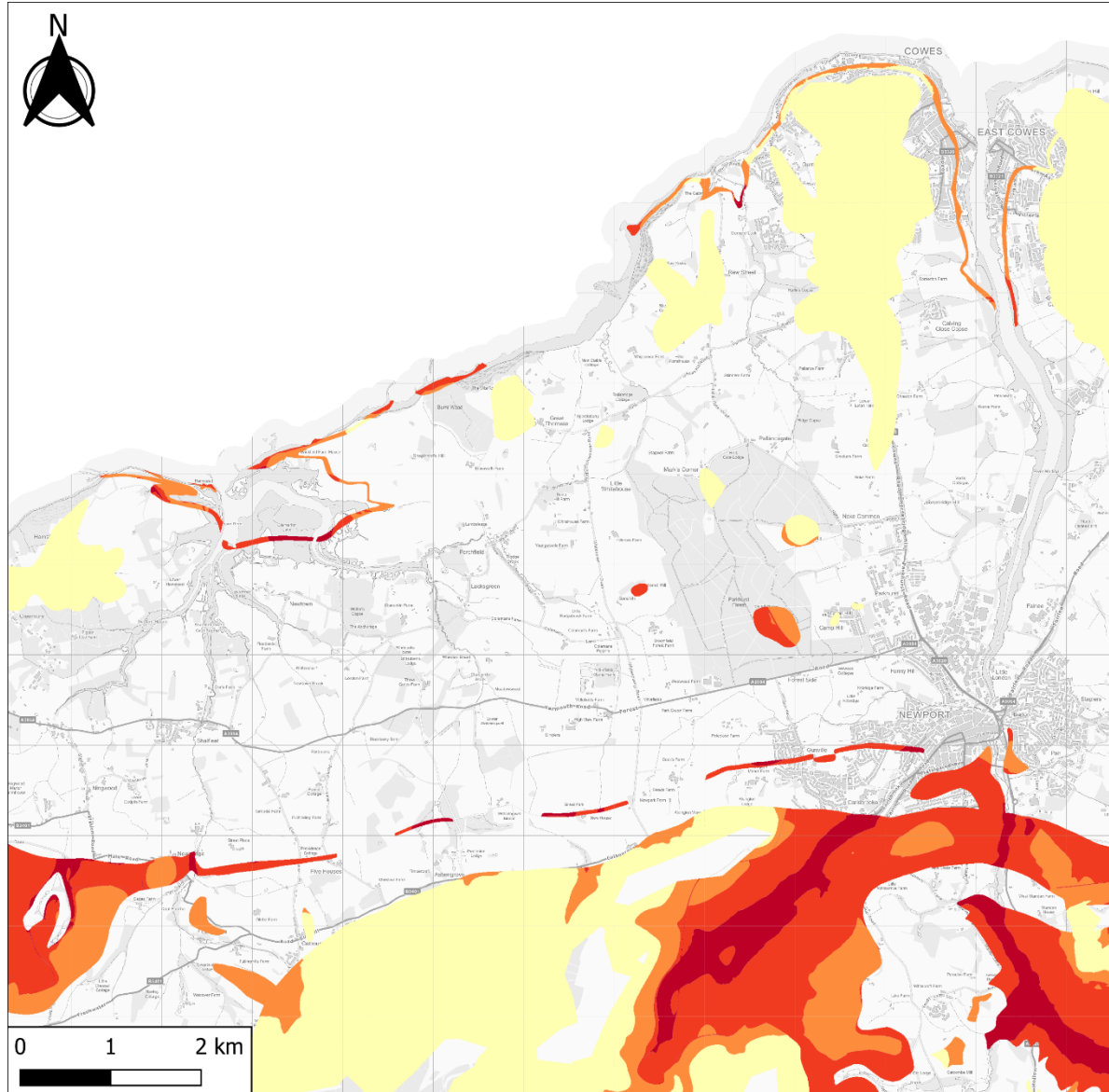


# Appendix C.3 – Groundwater flood risk



## Legend

- Groundwater levels are either at or very near (within 0.025m) of the ground surface.
- Groundwater levels are between 0.025m and 0.5m below the ground surface.
- Groundwater levels are between 0.5m and 5m below the ground surface.
- Groundwater levels are at least 5m below the ground surface.



35 Perrymount Road  
Haywards Heath  
RH16 3BW  
United Kingdom



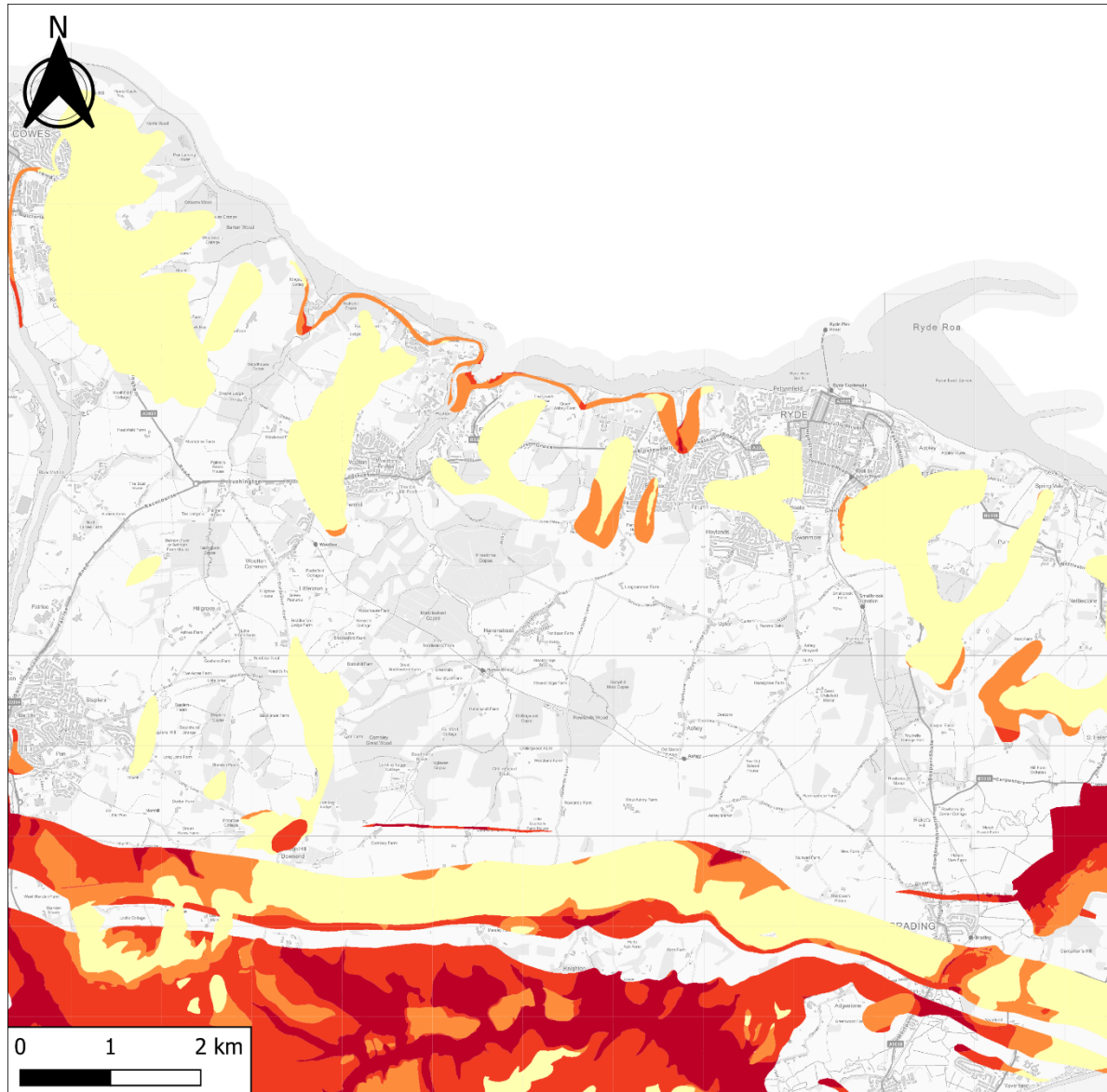
County Hall, High Street  
Newport  
PO30 1UD  
United Kingdom  
[www.iow.gov.uk](http://www.iow.gov.uk)

Contains Ordnance Survey data © Crown copyright and database right 2023. Contains public sector information licenced under the Open Government Licence v3.0.

This document is the property of Jeremy Benn Associates Ltd. It shall not be reproduced in whole or in part, nor disclosed to a third party, without the permission of Jeremy Benn Associates Ltd.

## Legend

- Groundwater levels are either at or very near (within 0.025m) of the ground surface.
- Groundwater levels are between 0.025m and 0.5m below the ground surface.
- Groundwater levels are between 0.5m and 5m below the ground surface.
- Groundwater levels are at least 5m below the ground surface.



35 Perrymount Road  
Haywards Heath  
RH16 3BW  
United Kingdom



County Hall, High Street  
Newport  
PO30 1UD  
United Kingdom  
[www.iow.gov.uk](http://www.iow.gov.uk)

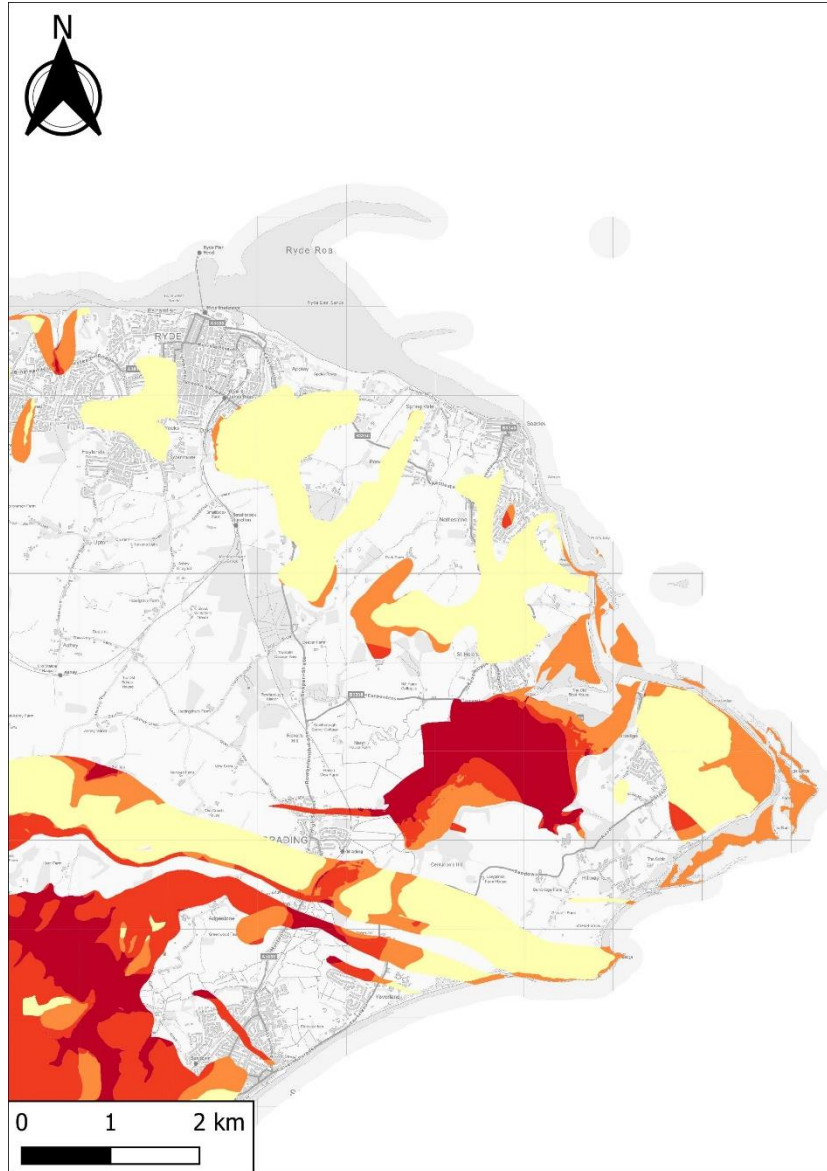
Contains Ordnance Survey data © Crown copyright and database right 2023. Contains public sector information licenced under the Open Government Licence v3.0.

This document is the property of Jeremy Benn Associates Ltd. It shall not be reproduced in whole or in part, nor disclosed to a third party, without the permission of Jeremy Benn Associates Ltd.

0 1 2 km

## Legend

- Groundwater levels are either at or very near (within 0.025m) of the ground surface.
- Groundwater levels are between 0.025m and 0.5m below the ground surface.
- Groundwater levels are between 0.5m and 5m below the ground surface.
- Groundwater levels are at least 5m below the ground surface.



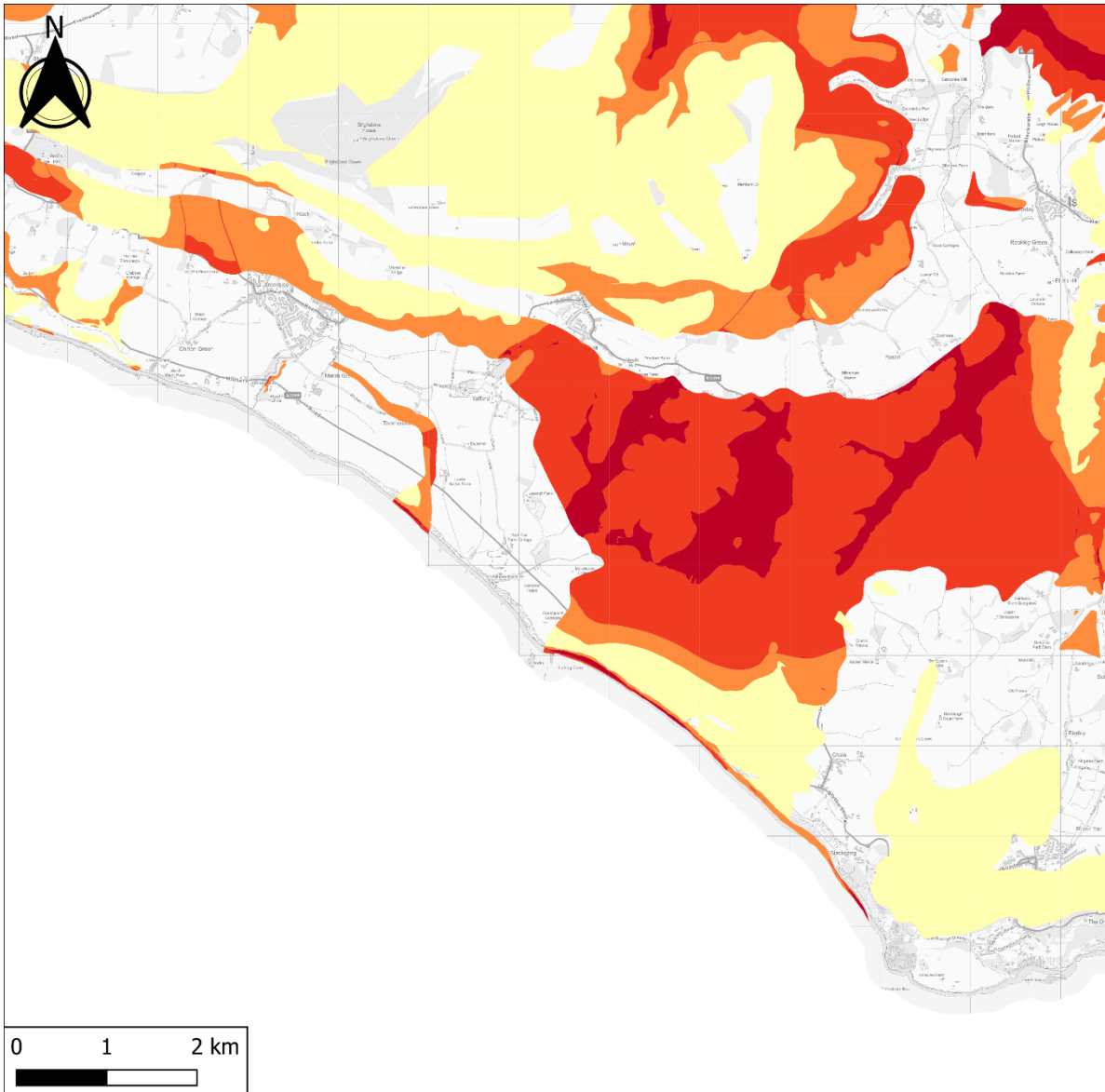
35 Perrymount Road  
Haywards Heath  
RH16 3BW  
United Kingdom



County Hall, High Street  
Newport  
PO30 1UD  
United Kingdom  
[www.iow.gov.uk](http://www.iow.gov.uk)

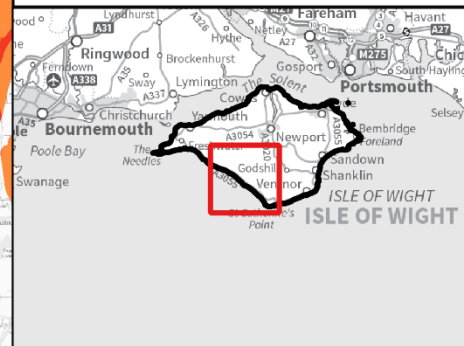
Contains Ordnance Survey data © Crown copyright and database right 2023. Contains public sector information licenced under the Open Government Licence v3.0.

This document is the property of Jeremy Benn Associates Ltd. It shall not be reproduced in whole or in part, nor disclosed to a third party, without the permission of Jeremy Benn Associates Ltd.



### Legend

- Groundwater levels are either at or very near (within 0.025m) of the ground surface.
- Groundwater levels are between 0.025m and 0.5m below the ground surface.
- Groundwater levels are between 0.5m and 5m below the ground surface.
- Groundwater levels are at least 5m below the ground surface.



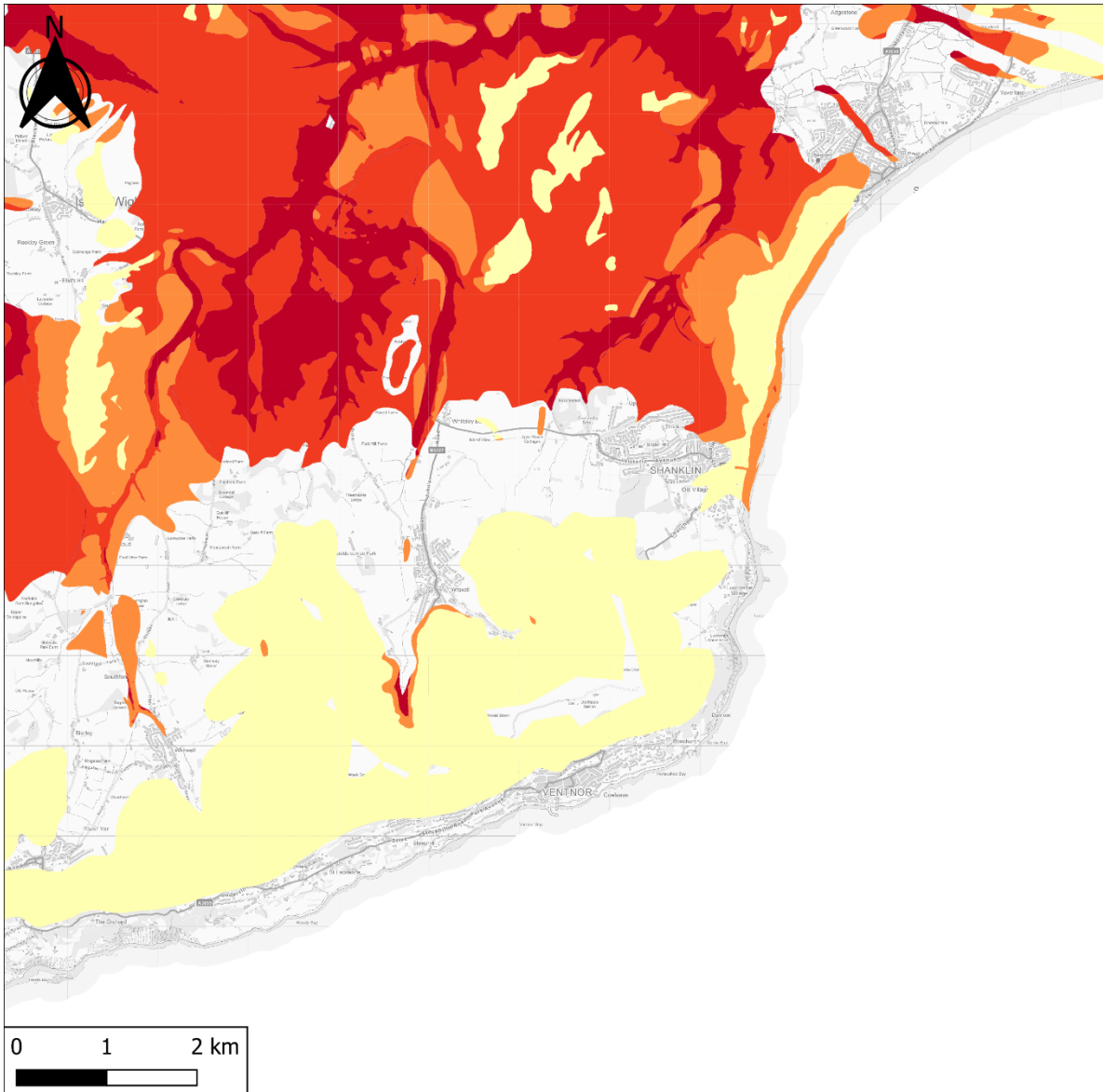
35 Perrymount Road  
Haywards Heath  
RH16 3BW  
United Kingdom



County Hall, High Street  
Newport  
PO30 1UD  
United Kingdom  
[www.iow.gov.uk](http://www.iow.gov.uk)

Contains Ordnance Survey data © Crown copyright and database right 2023. Contains public sector information licenced under the Open Government Licence v3.0.

This document is the property of Jeremy Benn Associates Ltd. It shall not be reproduced in whole or in part, nor disclosed to a third party, without the permission of Jeremy Benn Associates Ltd.



### Legend

- Groundwater levels are either at or very near (within 0.025m) of the ground surface.
- Groundwater levels are between 0.025m and 0.5m below the ground surface.
- Groundwater levels are between 0.5m and 5m below the ground surface.
- Groundwater levels are at least 5m below the ground surface.



35 Perrymount Road  
Haywards Heath  
RH16 3BW  
United Kingdom



County Hall, High Street  
Newport  
PO30 1UD  
United Kingdom  
[www.iow.gov.uk](http://www.iow.gov.uk)

Contains Ordnance Survey data © Crown copyright and database right 2023. Contains public sector information licenced under the Open Government Licence v3.0.

This document is the property of Jeremy Benn Associates Ltd. It shall not be reproduced in whole or in part, nor disclosed to a third party, without the permission of Jeremy Benn Associates Ltd.