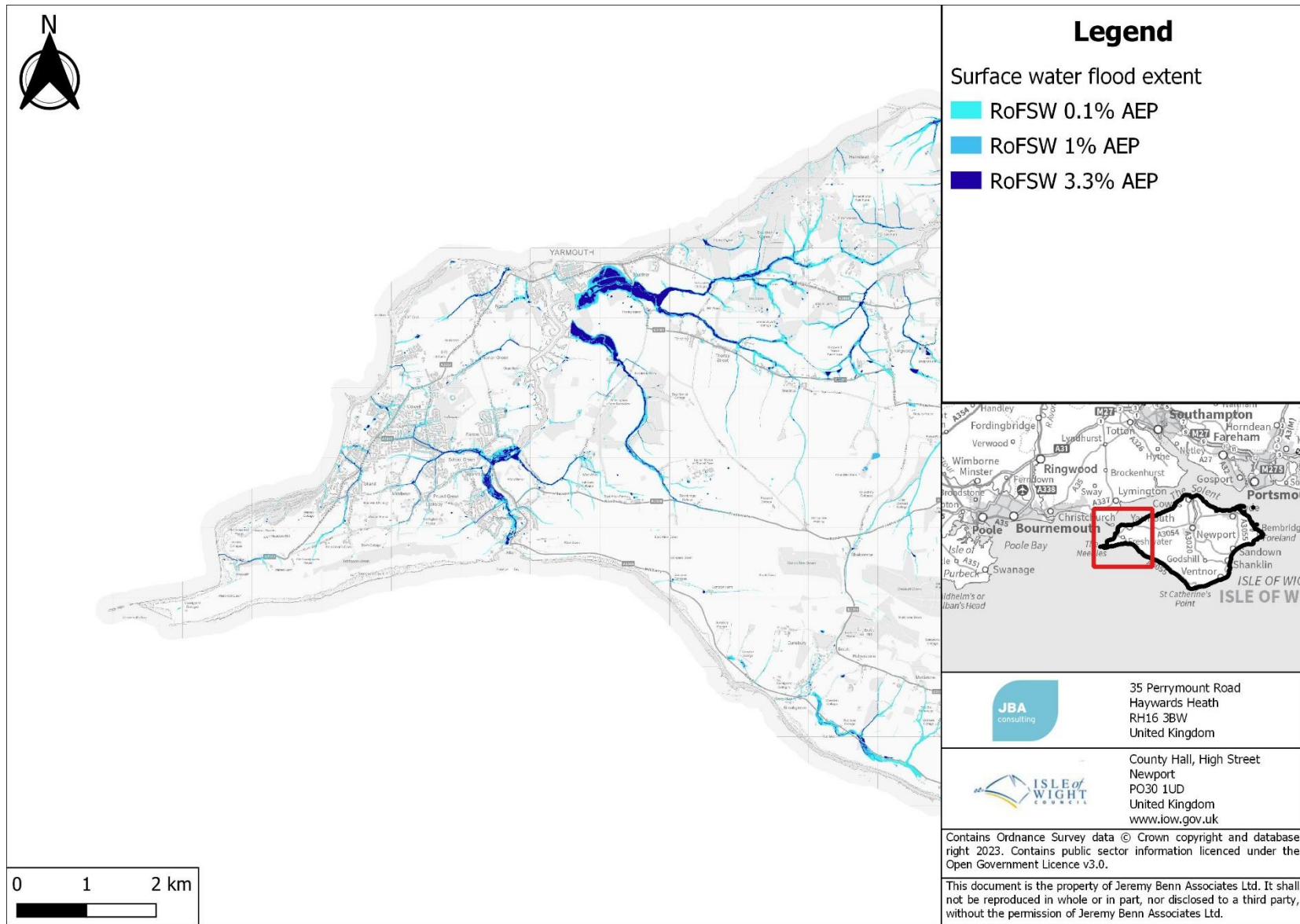
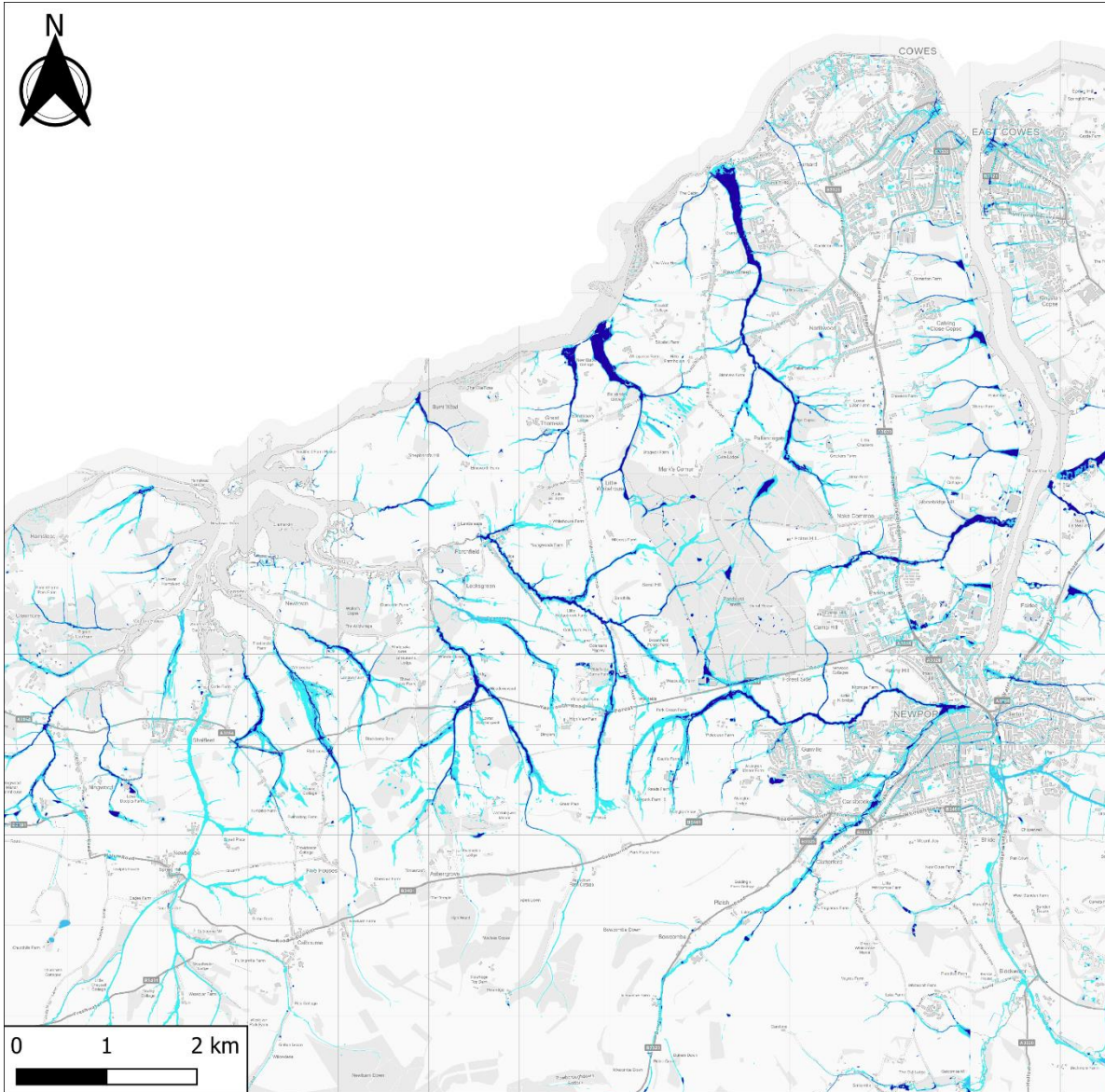


Appendix C.2 Surface water flood risk





Legend

Surface water flood extent

- RoFSW 0.1% AEP
- RoFSW 1% AEP
- RoFSW 3.3% AEP



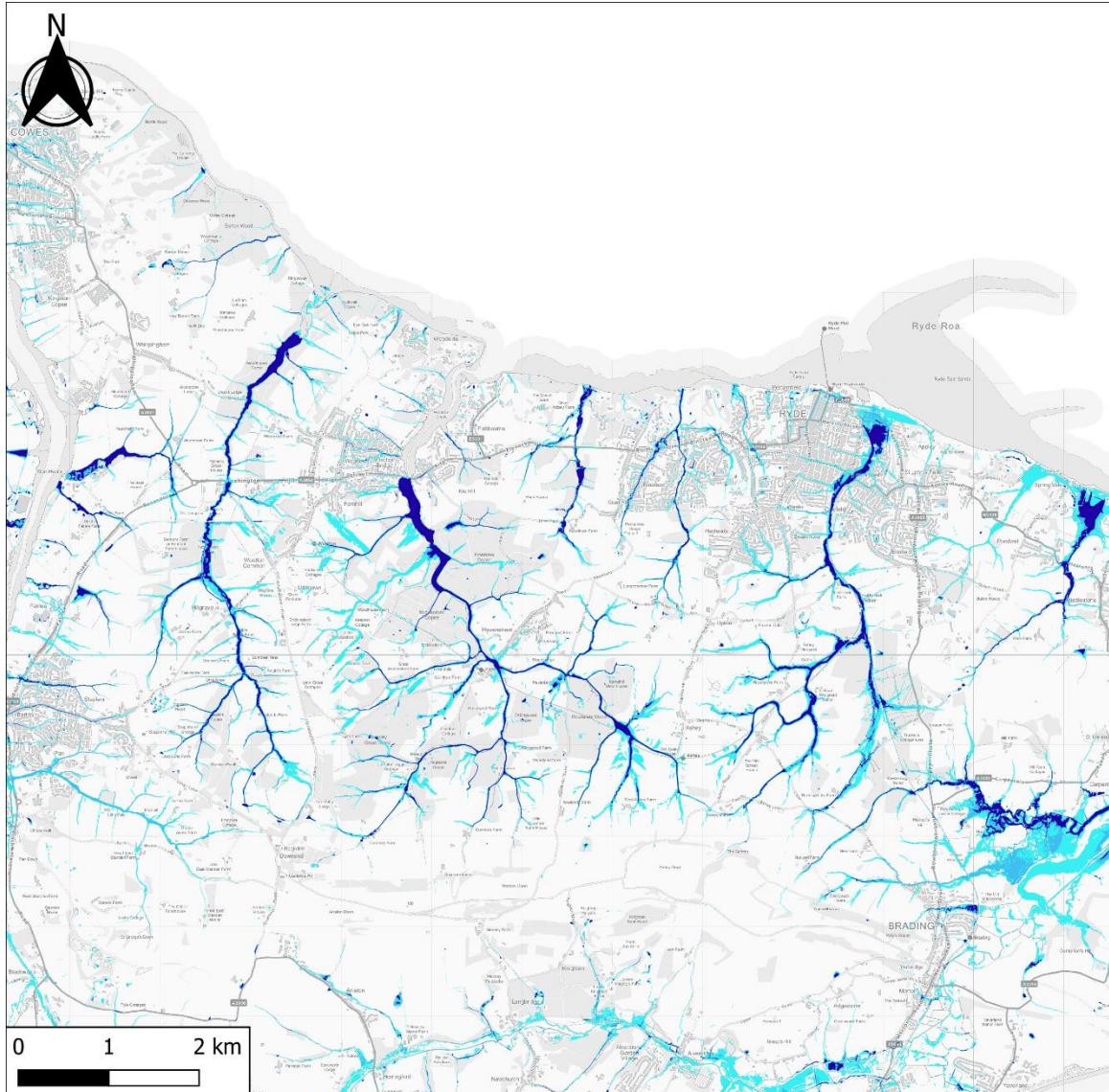
35 Perrymount Road
Haywards Heath
RH16 3BW
United Kingdom



County Hall, High Street
Newport
PO30 1UD
United Kingdom
www.iow.gov.uk

Contains Ordnance Survey data © Crown copyright and database right 2023. Contains public sector information licenced under the Open Government Licence v3.0.

This document is the property of Jeremy Benn Associates Ltd. It shall not be reproduced in whole or in part, nor disclosed to a third party, without the permission of Jeremy Benn Associates Ltd.



Legend

Surface water flood extent

- RoFSW 0.1% AEP
- RoFSW 1% AEP
- RoFSW 3.3% AEP



35 Perrymount Road
Haywards Heath
RH16 3BW
United Kingdom



County Hall, High Street
Newport
PO30 1UD
United Kingdom
www.iow.gov.uk

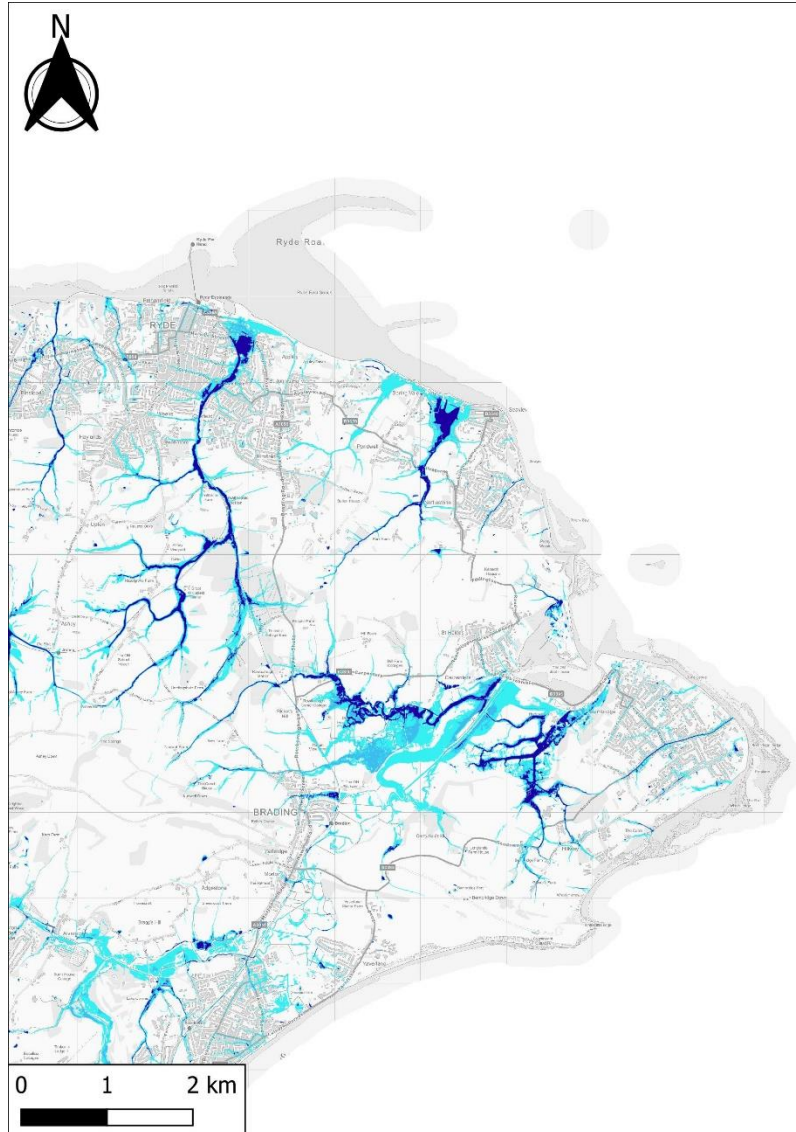
Contains Ordnance Survey data © Crown copyright and database right 2023. Contains public sector information licenced under the Open Government Licence v3.0.

This document is the property of Jeremy Benn Associates Ltd. It shall not be reproduced in whole or in part, nor disclosed to a third party, without the permission of Jeremy Benn Associates Ltd.

Legend

Surface water flood extent

- RoFSW 0.1% AEP
- RoFSW 1% AEP
- RoFSW 3.3% AEP



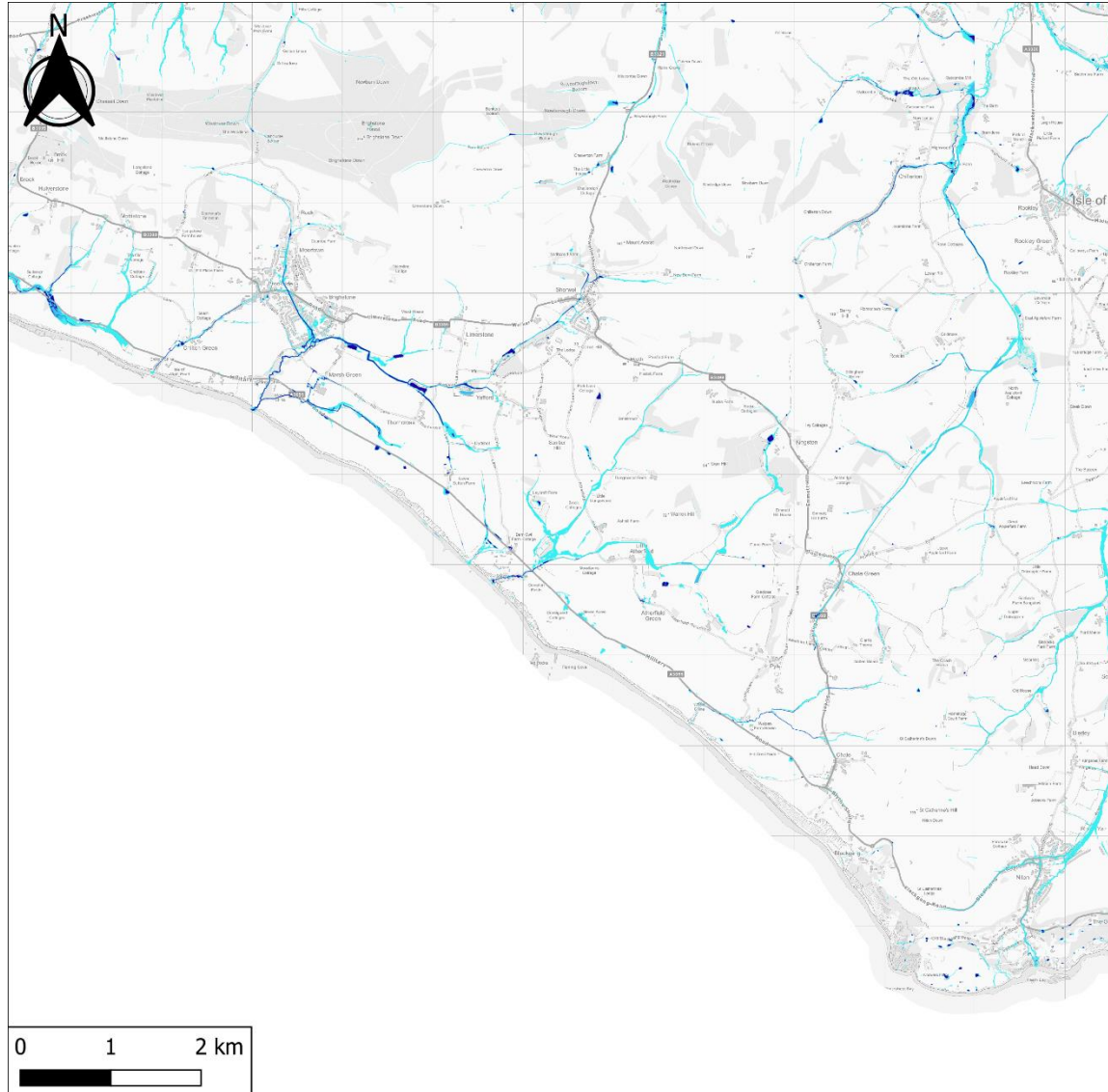
35 Perrymount Road
Haywards Heath
RH16 3BW
United Kingdom



County Hall, High Street
Newport
PO30 1UD
United Kingdom
www.iow.gov.uk

Contains Ordnance Survey data © Crown copyright and database right 2023. Contains public sector information licenced under the Open Government Licence v3.0.

This document is the property of Jeremy Benn Associates Ltd. It shall not be reproduced in whole or in part, nor disclosed to a third party, without the permission of Jeremy Benn Associates Ltd.



Legend

Surface water flood extent

■ RoFSW 0.1% AEP

■ RoFSW 1% AEP

■ RoFSW 3.3% AEP



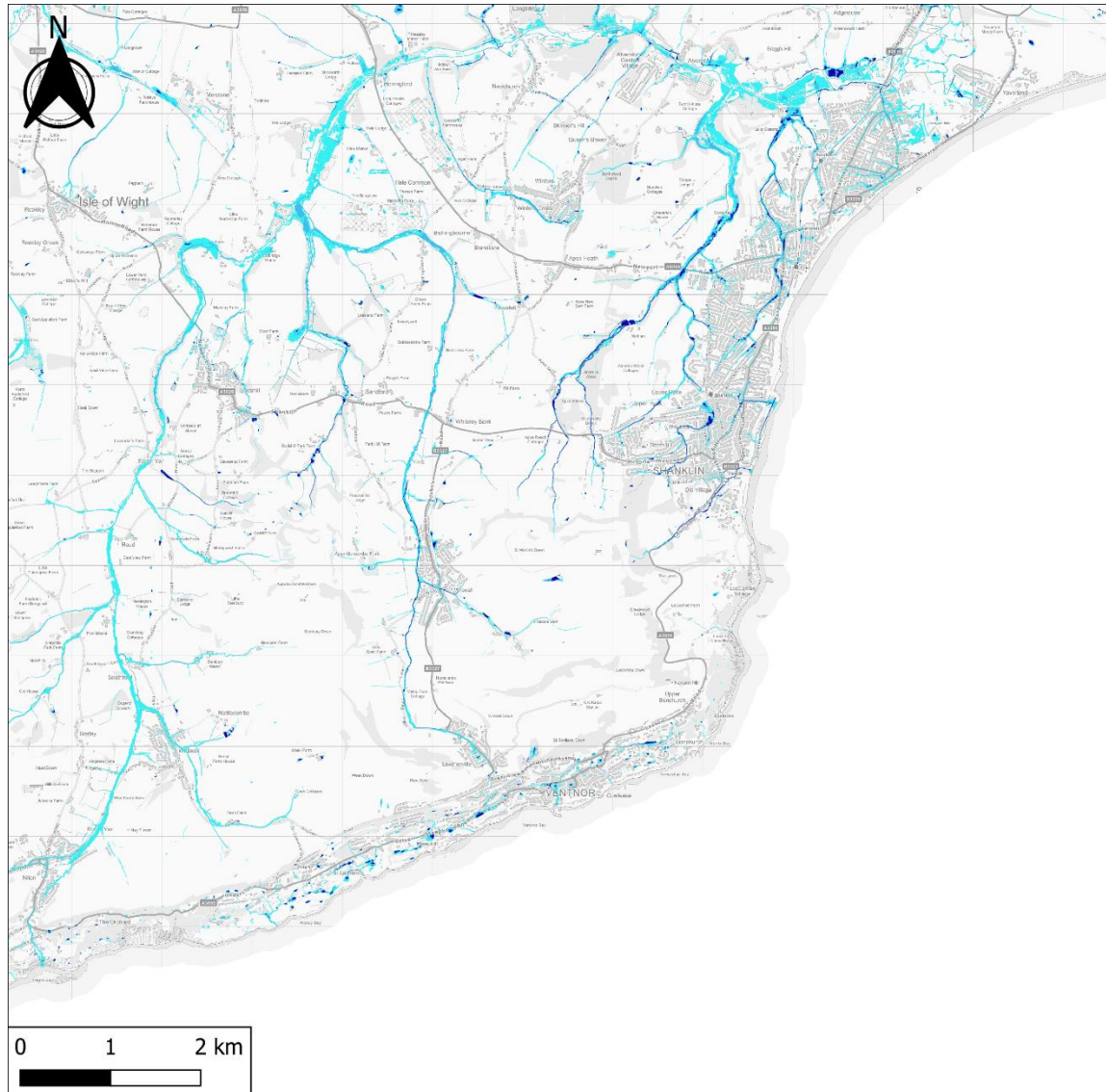
35 Perrymount Road
Haywards Heath
RH16 3BW
United Kingdom



County Hall, High Street
Newport
PO30 1UD
United Kingdom
www.iow.gov.uk

Contains Ordnance Survey data © Crown copyright and database right 2023. Contains public sector information licenced under the Open Government Licence v3.0.

This document is the property of Jeremy Benn Associates Ltd. It shall not be reproduced in whole or in part, nor disclosed to a third party, without the permission of Jeremy Benn Associates Ltd.



Legend

Surface water flood extent

- RoFSW 0.1% AEP
- RoFSW 1% AEP
- RoFSW 3.3% AEP



35 Perrymount Road
Haywards Heath
RH16 3BW
United Kingdom



County Hall, High Street
Newport
PO30 1UD
United Kingdom
www.iow.gov.uk

Contains Ordnance Survey data © Crown copyright and database right 2023. Contains public sector information licenced under the Open Government Licence v3.0.

This document is the property of Jeremy Benn Associates Ltd. It shall not be reproduced in whole or in part, nor disclosed to a third party, without the permission of Jeremy Benn Associates Ltd.