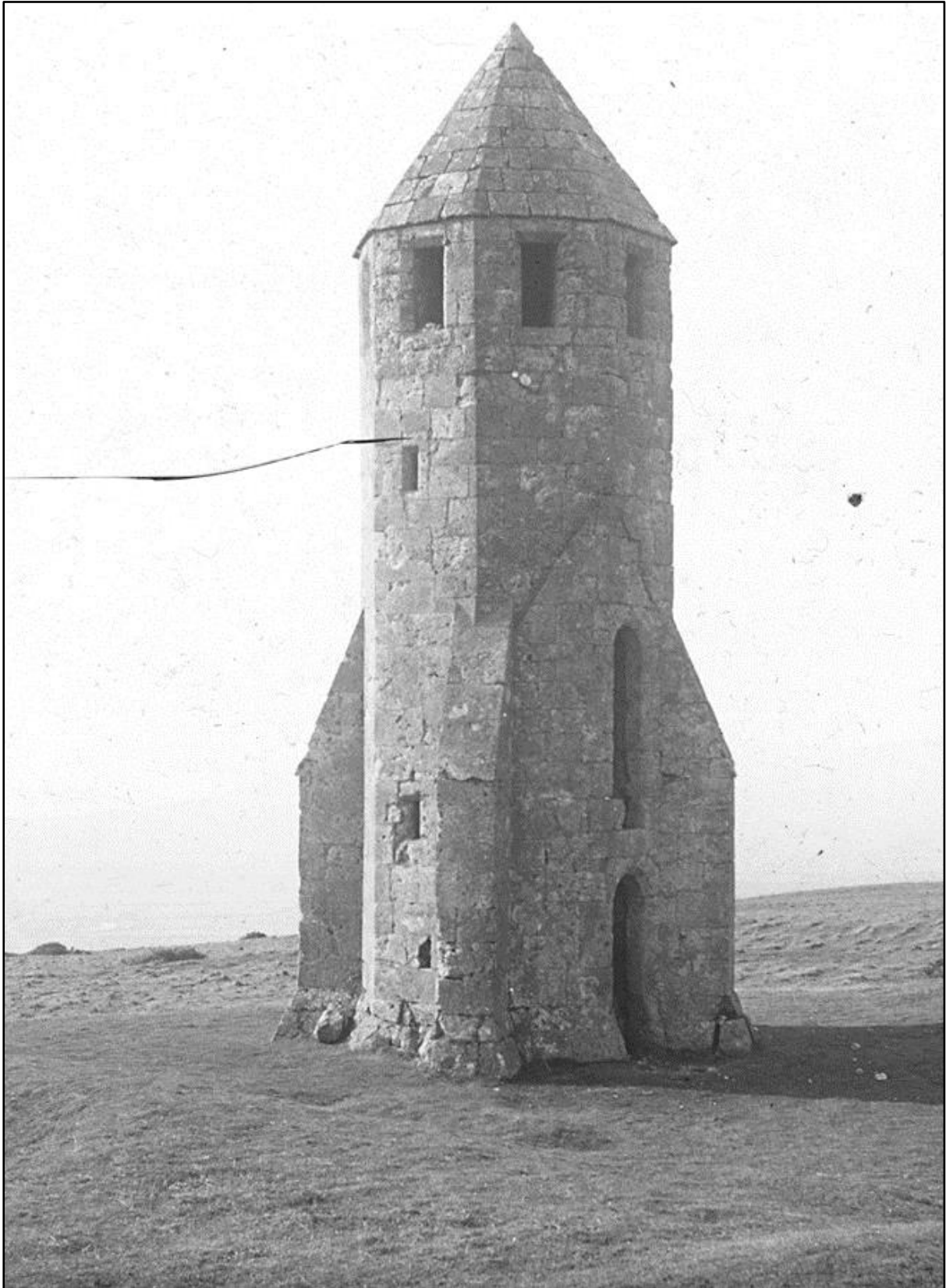


# Buildings



***Ruins of Chantry, Chale. I of W. St Catherine's Oratory known locally as the 'Pepperpot'. The last of Britain's medieval lighthouses. Built in 1321 the tower stands on the top of St Catherine's Down. Circa. 1890-1914***

IWCMS.2012.746



***Osborne House from N.E. rear view. View of Osborne House and the Terrace. Circa. 1900-1910***

IWCMS.2012.363



***Osborne House - From the West. Osborne House viewed from the west. Circa. 1900-1910***

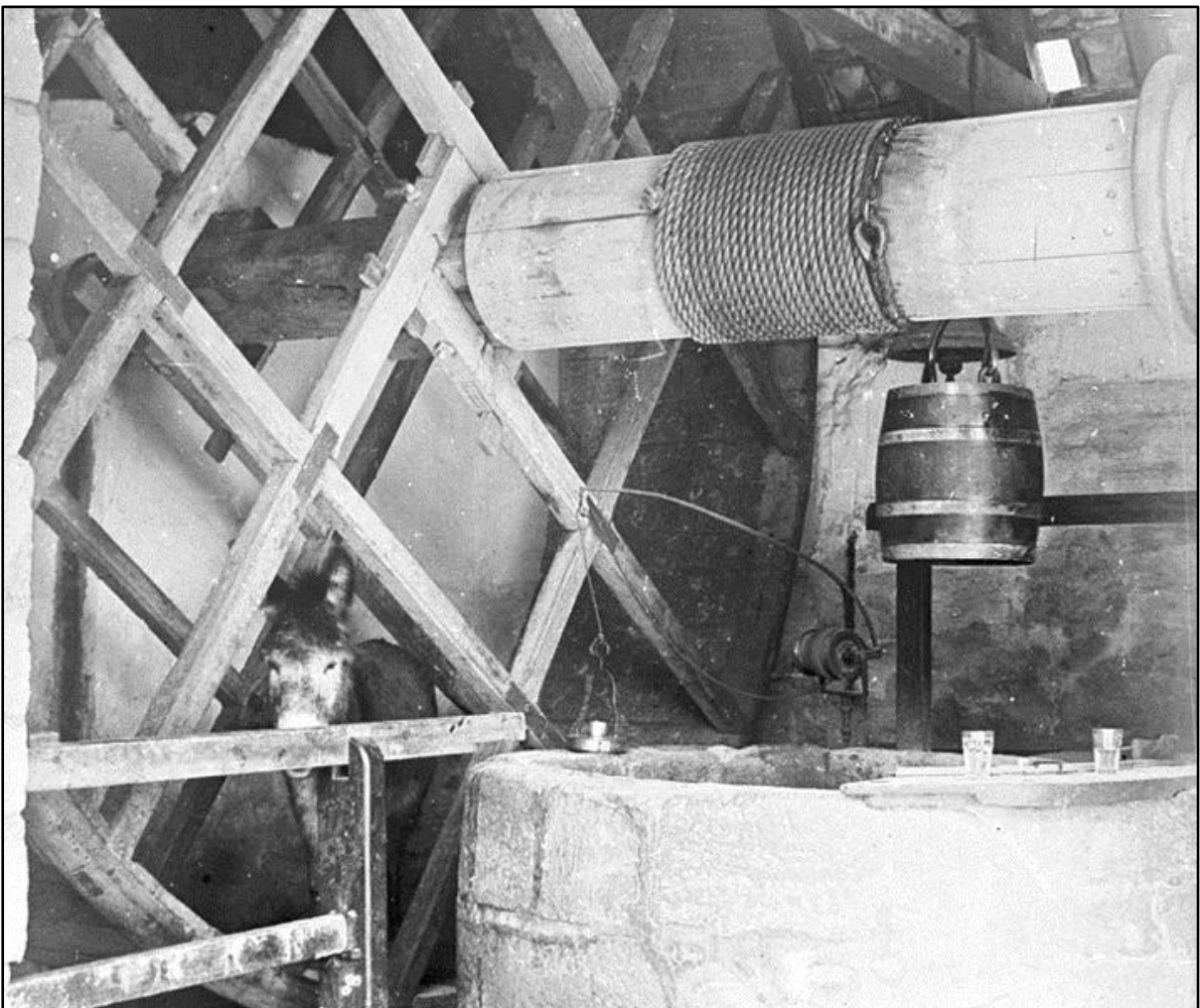
IWCMS.2012.264





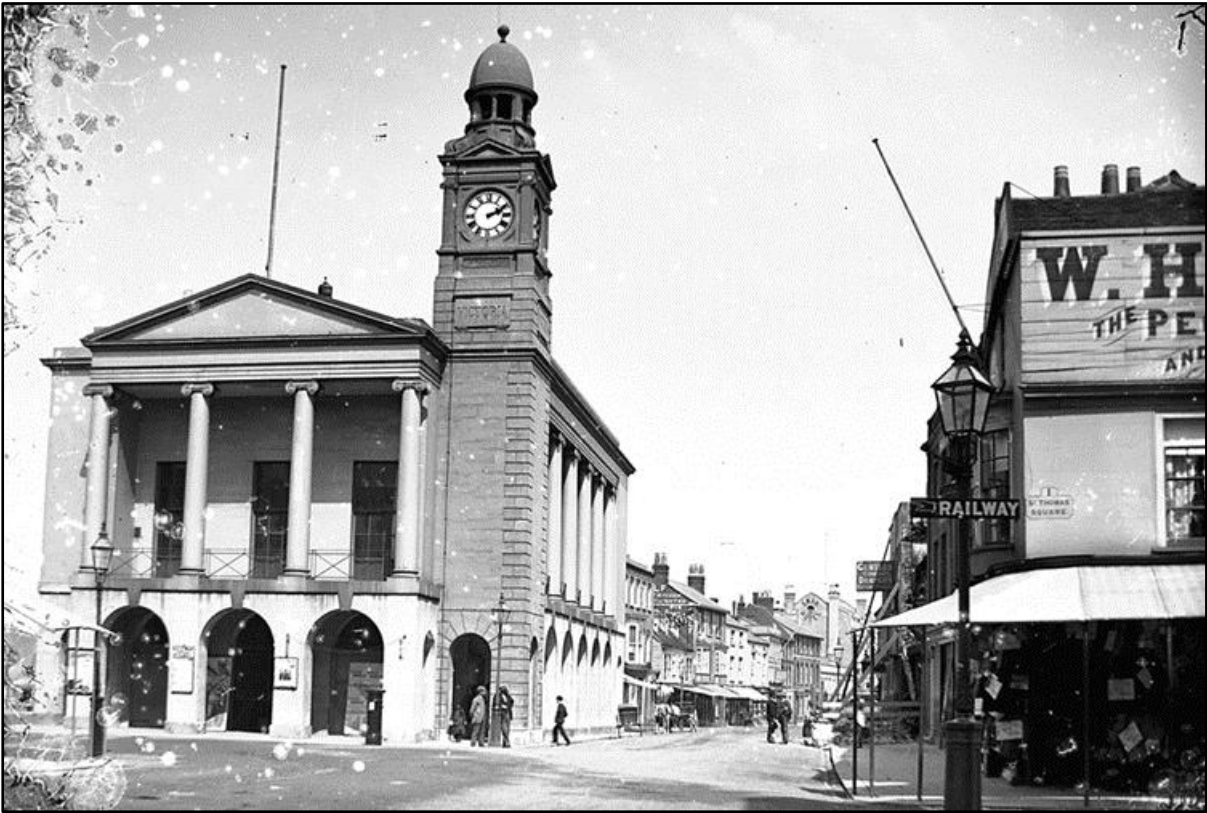
**Carisbrooke Castle. The tower and gatehouse entrance at Carisbrooke Castle. Circa. 1890-1914**

IWCMS.2012.337



**Carisbrooke Castle - Well, Wheel and Donkey. A donkey on the well house water wheel at Carisbrooke Castle. Circa. 1890-1914**

IWCMS.2012.240



**The Guildhall, High Street, Newport. Notice the post box in front of the building. Circa. Early 1900s**

IWCMS.1995.561



**Ryde Appley (sic) Tower. A view of Appley Tower and Ryde pier. Circa. 1890-1914**

IWCMS.2012.407





***St. Catherine's Lighthouse.*** A view of St. Catherine's Lighthouse situated at Niton Undercliff. The white octagonal tower has 94 steps up to the lantern. Circa. 1890-1914

IWCMS.2012.427



***Sandown Free Library.*** Sandown Library viewed from Culver Parade. Bathers cross the road. Circa. 1920s

IWCMS.2010.83



**Sandown - Hotel and Jubilee Memorial. The Sandown Hotel and Jubilee Memorial. Circa. 1890-1914** IWCMS.2012.542



**Bonchurch Old Church. Dedicated to the Saxon monk St Boniface. Circa. 1890-1914** IWCMS.2012.17



**Two women and a man standing by the wall of Arreton Church.  
Circa. 1890-1914**

IWCMS.2012.535



**Brading Church. A view of Brading Church and its graveyard.  
Circa. 1890-1914**

IWCMS.2012.422





**St Mary Church, Carisbrooke. Circa. 1890-1914**

IWCMS.2012.319



**The Wesleyan Methodist Church, Garfield Road, Ryde.  
Circa. 1884-1914**

IWCMS.2012.273





**Newchurch church. Circa. 1890-1914** IWCMS.2012.268



**IWLA 1914. Ladies dancing round a maypole at Whitecroft Psychiatric Hospital, Newport. 1914**

IWCMS.1995.550



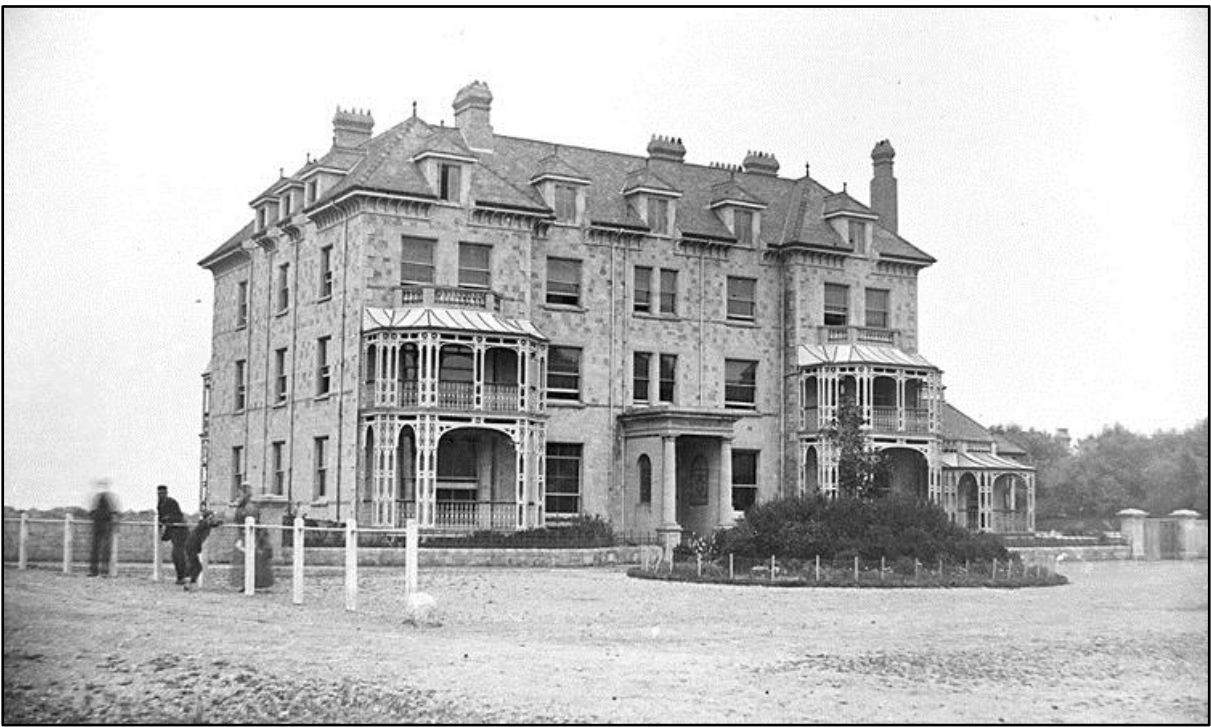
**The Capital and Counties Bank (possibly Shanklin)  
decorated for the Coronation of George V. 1911**

IWCMS.2012.45



**Little Jane's Cottage Brading. Circa. 1890-1914**

IWCMS.2012.283



***Bembridge Spithead Hotel.* A view of the Royal Spithead Hotel at Bembridge. Circa. 1890-1914**

IWCMS.2012.433



**A view of Yaverland Manor built in 1620. Circa. 1914**

IWCMS.2012.8