

**1** Go through the kissing-gate and turn right across the field. After half-way, you have a view to your right stretching across Brading with the school in the forefront and the 12th century church beyond. Young trees planted mainly by children in 2005 are forming new woodland in this area. To find out more, visit [www.brading.co.uk/bettys\\_copse.aspx](http://www.brading.co.uk/bettys_copse.aspx)

**2** The woodland path starts at the far side of the field. Go through the gateway and follow the path, past the upturned tree **3**. The first narrow path you meet on the left has a sheer drop, so carry on for about 300 yards/274 metres until a second, much better path cuts back at an acute angle **4**. The climb is quite steep, but not too long to go to Brading Down!

[www.brading.co.uk/bettys\\_copse.aspx](http://www.brading.co.uk/bettys_copse.aspx)



## Enjoy Walking Safely!

Allow 1 hour from Brading Station to the Roman Villa with children aged 7-9.

Distance about 1.86 miles/3 kilometres one way.

### Be aware:

- Brading's main roads are often busy.
- Pavements may be lacking in places.
- Paths can be narrow needing single-file.
- Water-filled ditches can be overgrown.
- Woodland paths have very muddy patches.
- Some have a steep slope on one side.
- Surfaces can be uneven, with exposed roots.
- Nettles and brambles may be close to paths.
- Wooden stiles and gates may cause splinters.
- Berries can be poisonous.

### Be prepared:

- Ensure enough adults accompany children.
- Wear wellies, walking boots or tough shoes.
- Protect heads, arms, legs and hands.
- Check weather reports.
- Take drinks and something to eat.
- Carry a small first-aid kit.

### Follow the Countryside Code:

- Be safe – plan ahead and follow any signs.
- Leave gates and property as you find them.
- Protect plants and animals.
- Take your litter home.
- Keep dogs under close control.
- Consider other people.
- Visit [www.countrysideaccess.gov.uk](http://www.countrysideaccess.gov.uk)

## Welcome to Brading, Eastern Gateway to the Isle of Wight Area of Outstanding Natural Beauty

Your Welly Walk takes you through shady

woodland slopes to the top of Brading Down, then descends through the enchanting Butterfly Walk to the historic remains of the Roman Villa.

You will see outstanding views of the countryside from the Viewing Area at the top: over to Sandown Bay in one direction; and in another direction over Brading to the St. Helens and Bembridge coast.

Remember to look down too! Notice the differences between the thick carpet of wild flowers and plants in the woods and the plainer grassland of the upper slopes.

Notice also that where the soil has been worn away from paths, you can see chalk and flint – a reminder that Brading Down is part of the chalk backbone of the Island, and that at one time, millions of years ago, where you are walking was under the sea!

You can find out how chalk and flint are formed; what makes downland so different from woodland; and why certain blue butterflies have ants as nannies, by following the **web links** on the back page.



## Map A

You are here at Brading Station Visitor Centre. The Map shows routes to the Beech Grove Starting Point **1** for your illustrated walk.



### Key

Traffic lights Toilets (West St.) Information Board

Recommended route from the Station Car Park for school parties. Keep to the right side of roads, cross at the lights, then left up The Mall (cross to pavement), turn right into Beech Grove, past the Car Park to Starting Point **1** on the left.

Other route from Station platform: single-file lane with ditch one side; unassisted New Road crossing to Wrax Road, across The Mall, up Bridleway B39, through the kissing-gate on the right, and straight down the field to Starting Point **1**.

## from Brading Station to the Roman Villa



# MONDROFUL WELLY WALK

## Brading Church of England Primary School's

### Discover more about Brading Down:

Visit [www.brading.gov.uk/leaflets.aspx](http://www.brading.gov.uk/leaflets.aspx) These leaflets provide fascinating information on the character of the downland, its history, geology, the ancient downland field system, its ecosystem and butterflies.



This leaflet is part of Brading Gateways – Walks and Interpretation Project, co-ordinated by Brading Town Council [www.brading.gov.uk](http://www.brading.gov.uk) and assisted by the Isle of Wight AONB Partnership [www.wightaonb.org.uk](http://www.wightaonb.org.uk)

The walk was charted by Brading C.of E. Primary School's children and teachers.

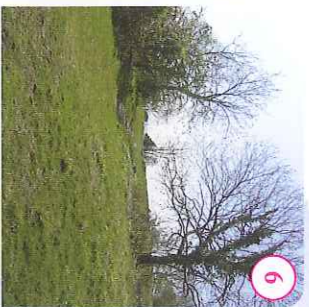


Produced on recycled paper by Crossprint, Newport, Isle of Wight.





5



6



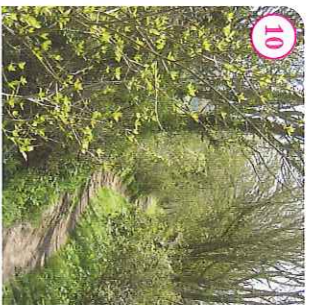
8



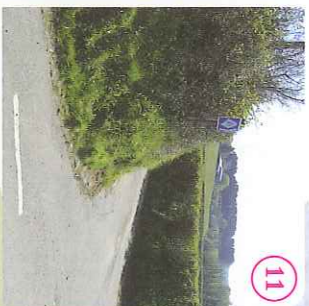
9

5 When you reach open ground at the top of the path, go to the right hand side where the path leads to a gap in the hedgerow 6. You have reached the main road to Newport so great care must be taken here.

There is a small parking area on the opposite side of the road 7 **Map B**. Go through the gate in the top left hand corner and follow the path around 8 (Bridleway B41) until you reach another gate – return route 18, which brings you to Upper Adgestone Road. Take care here again – although this is a quiet road, it has no pavement. Do not cross. You will be correctly facing oncoming traffic for the few steps on the right to the Butterfly Walk entrance 9.



10



11



12



13

By the wooden bench, you can take the left hand path down the steps with mosaics on. However, for a longer walk, continue along the path which winds narrowly uphill. After the steps where the path ends, turn left along the wider downhill path 10. This is part of Bridleway B42 which meets the Upper Adgestone Road, where you will see the Adgestone Vineyard on your right and a junction ahead – take the left turn 11. Take care on this very narrow road.

At the next junction 12, turn left and look for Footpath B63 on your right. Over the stile, with the Roman Villa now in view, follow the path ahead, then take the first path left back to a stile in the corner of the field 13 to meet Footpath B48 which will give you access to the Roman Villa 14 **Map B**.



15



16



17



18

To vary the return walk\*, retrace your steps but this time continue to the bottom of B48 down the steps and turn right to rejoin the Lower Adgestone Road. Walk along the road 15 until you see the narrow entrance to Footpath B65 on the left hand side 16.

At the end of this uphill path, you will meet the Upper Adgestone Road. Turn right and a few steps on your left is the other unmarked entrance to the Butterfly Walk 17. Look out for the mosaics on the steps. Turn to the right at the bench and come back through the gate, where you turn left for the short walk along the Upper Adgestone Road to the B41, and go through the gate you came through earlier 18.

\* The shorter B46 opp. B63 is unsuitable for school parties.



19



20



21

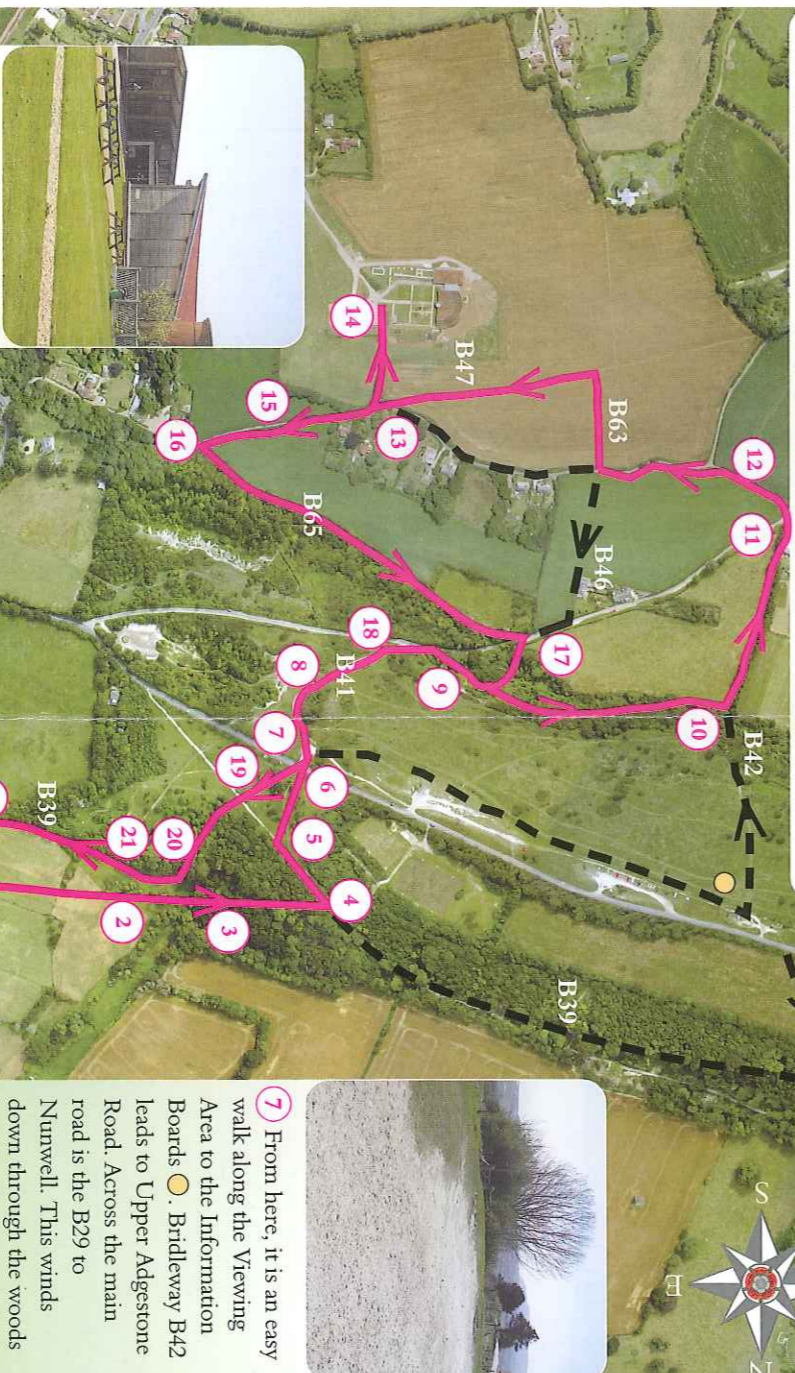


22

Continue to retrace your steps round to the parking area 7 **Map B** and cross the main road carefully again. This time veer to the right 19 across and down the field towards the woodland until you reach a downward path with a wooden bench to its right 20. At the end of the path, turn right (into B39) 21 and carry on for about 500 yards/457 metres, until you see a metal kissing-gate on your left 22.

Here you may wish to consult **Map A** for the most suitable route for you back to the Station. The safest route for school parties is via the kissing-gate across the field back to Beech Grove Starting Point 1.

**Map B** From Beech Grove Starting Point 1 via Brading Down 7 to the Roman Villa 14, with varied return route 14-22, and other options.



14 The Roman Villa

makes special arrangements for school parties if pre-booked: [www.bradingromanvilla.org.uk](http://www.bradingromanvilla.org.uk) or phone 01983 401579 or 01983 406223. Entry to the Café and use of the outside picnic area is free to the public.



7 From here, it is an easy walk along the Viewing Area to the Information Boards. Bridleway B42 leads to Upper Adgestone Road. Across the main road is the B29 to Nunwell. This winds down through the woods to meet the B39 back to Brading.

WONDERFUL  
WELLY  
WALK

**Key**  
— Main illustrated route    - - - Optional routes  
▲ Brading Station Visitor Centre    ○ Information Board

Cities Revealed  
photography copyright  
The Geographical  
Group 2006