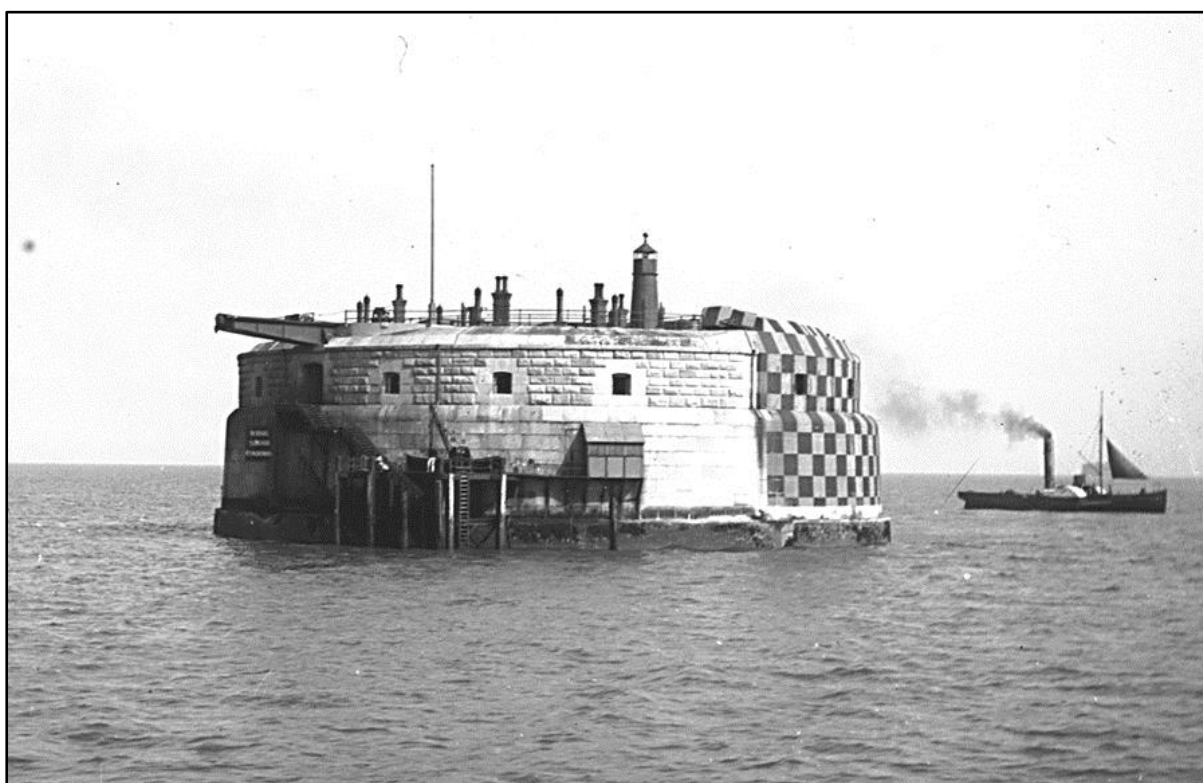


Around the coast



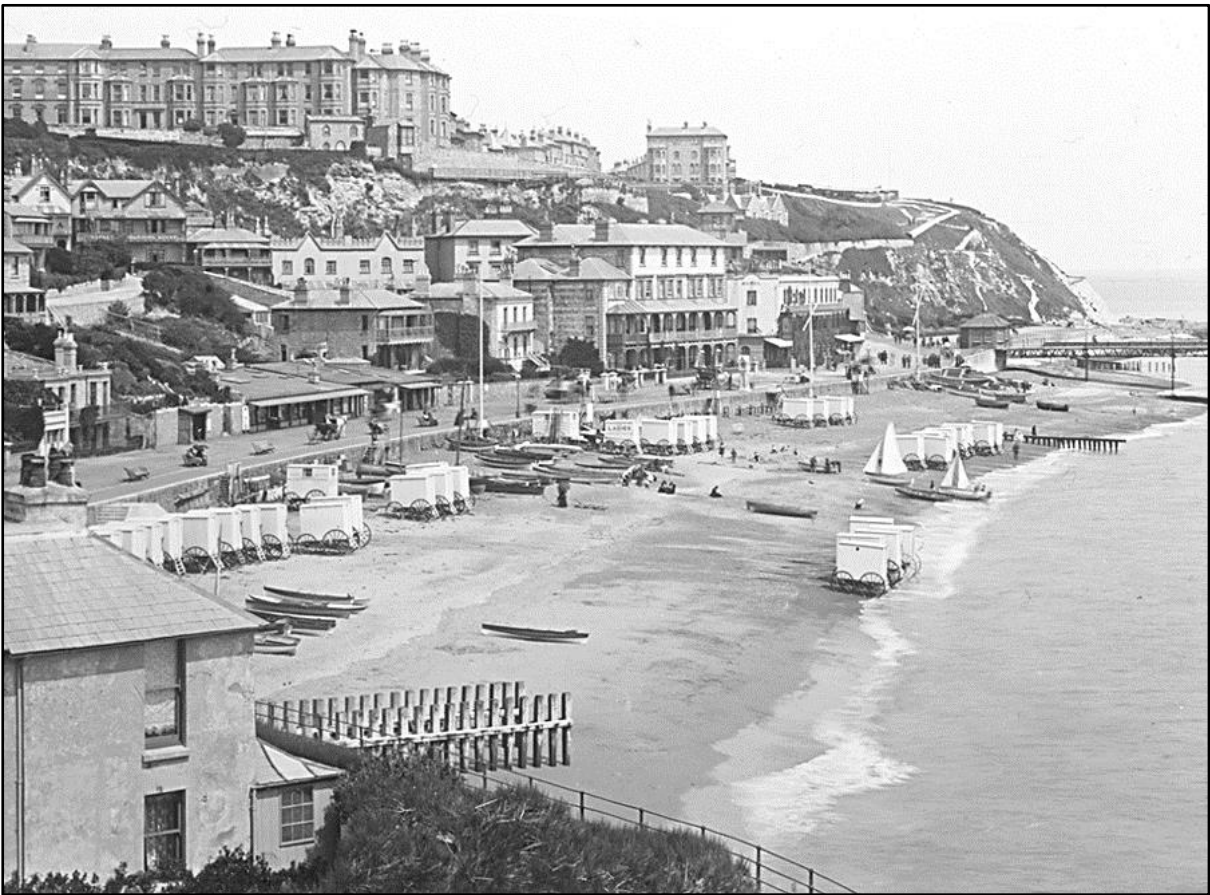
Lorna Doone Sandown IW. The Paddle Steamer Lorna Doone in Sandown Bay, Culver Cliff can be seen in the background. Circa. 1907-1914

IWCMS.2010.64



Hors...Fort Spithead. Horse Sand Fort in the Solent. A steamer can be seen in the water at the side of the fort. Circa. 1890-1914

IWCMS.2010.71



Ventnor from the West. A view across Ventnor from the western cliffs looking across the town and beach. There are many bathing huts and boats on the beach. Circa. 1900-1910

IWCMS.2010.63



A view of Ventnor and its beach viewed from the pier. Queen's Hotel and Esplanade Hotel can be seen. Circa. 1890-1914

IWCMS.2010.79



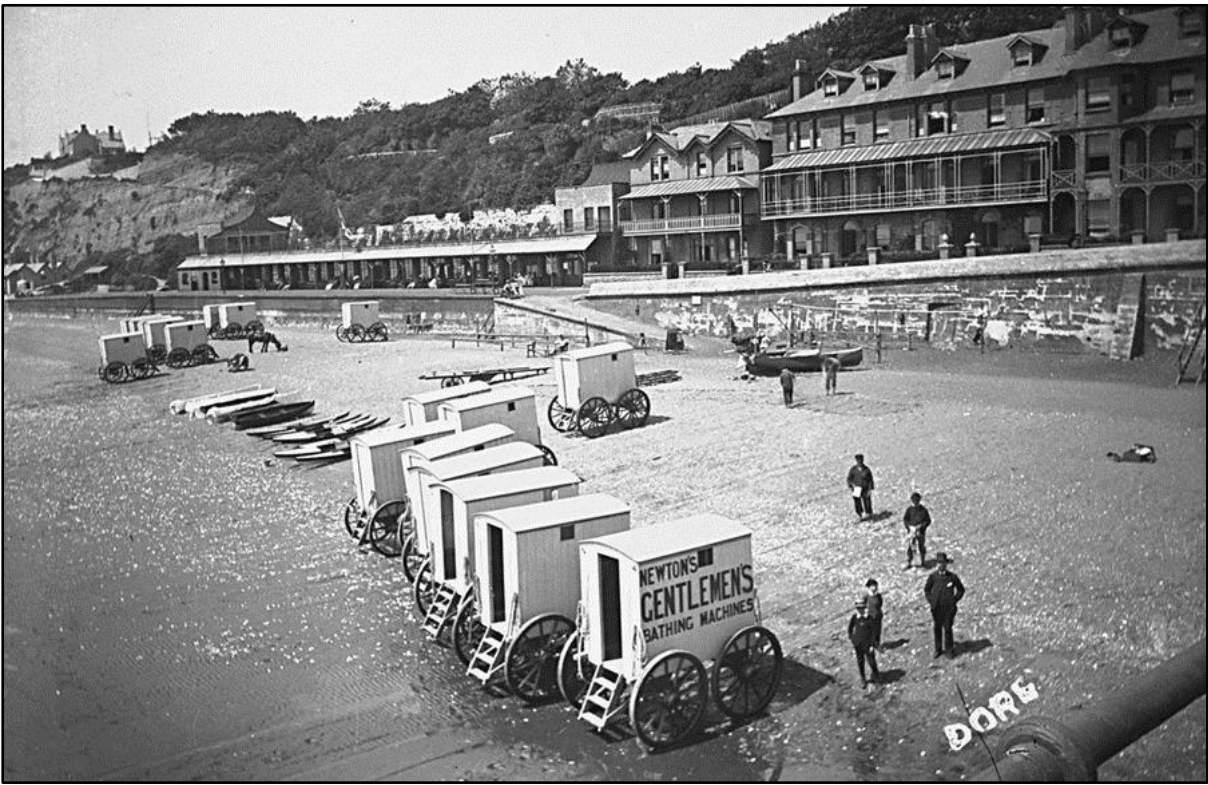
Freshwater Gate IW. A view of Freshwater Bay. The area was also known as Freshwater Gate. Numerous crab pots can be seen in the foreground. Circa. 1890-1910

IWCMS.2010.80



Cowes, The Pontoon. A view from Cowes pontoon looking out over the pontoon and harbour with East Cowes in the background. Circa. 1880-1890

IWCMS.2010.72



***Sandown from Pier.* Sandown beach with beach huts and Newton's Gentlemen's Bathing Machines. Circa. 1890-1910**

IWCMS.2010.70



***Cowes on the Parade.* A busy crowd on the parade, looking toward the Gloster Hotel at Cowes. Circa. 1890-1914**

IWCMS.1995.565



Children playing on the beach at Sandown. A young boy plays with a toy sailing boat in foreground. Circa. 1890-1914 IWCMS.1995.689

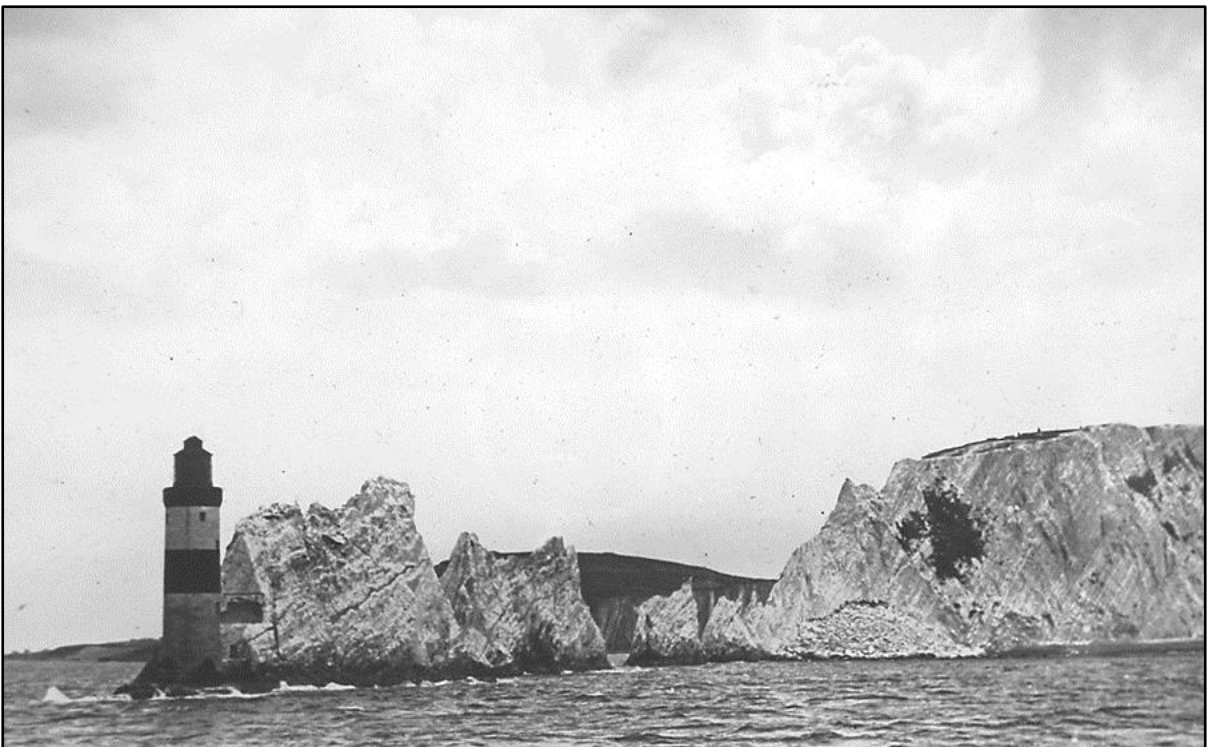


***Shanklin from the Cliffs.* A view of Shanklin from the cliffs. The view is from the Hope Road end showing the Esplanade and lift with Luccombe in the background. Circa. 1891-1914** IWCMS.2010.81



Steephill Bay. A view of houses and fishing boats at Steephill Cove. Circa. 1891-1914

IWCMS.2012.493



Needles Rocks and Lighthouse. A view of the Needles rocks and Lighthouse. Circa. 1891-1914

IWCMS.2012.51



Making Crab Pots. An Island fisherman sitting making crab pots.
Circa. 1880-1910

IWCMS.2010.68



The Ratter. A dog with a rat in its mouth stands between two fishermen on the beach at Shanklin. Circa. 1880-1910

IWCMS.1995.590



**Fishermen gather nets full of mackerel on the beach at Shanklin.
Circa. 1880-1910**

IWCMS.1995.686



***Diver descends.* A diver descends into the sea, while the crew look on from a boat called 'Solent'. Circa. 1880-1914**

IWCMS.1995.687



Four young women on an Island beach. A fisherman stands nearby. Circa. 1880-1910

IWCMS.1995.696