

Annex A

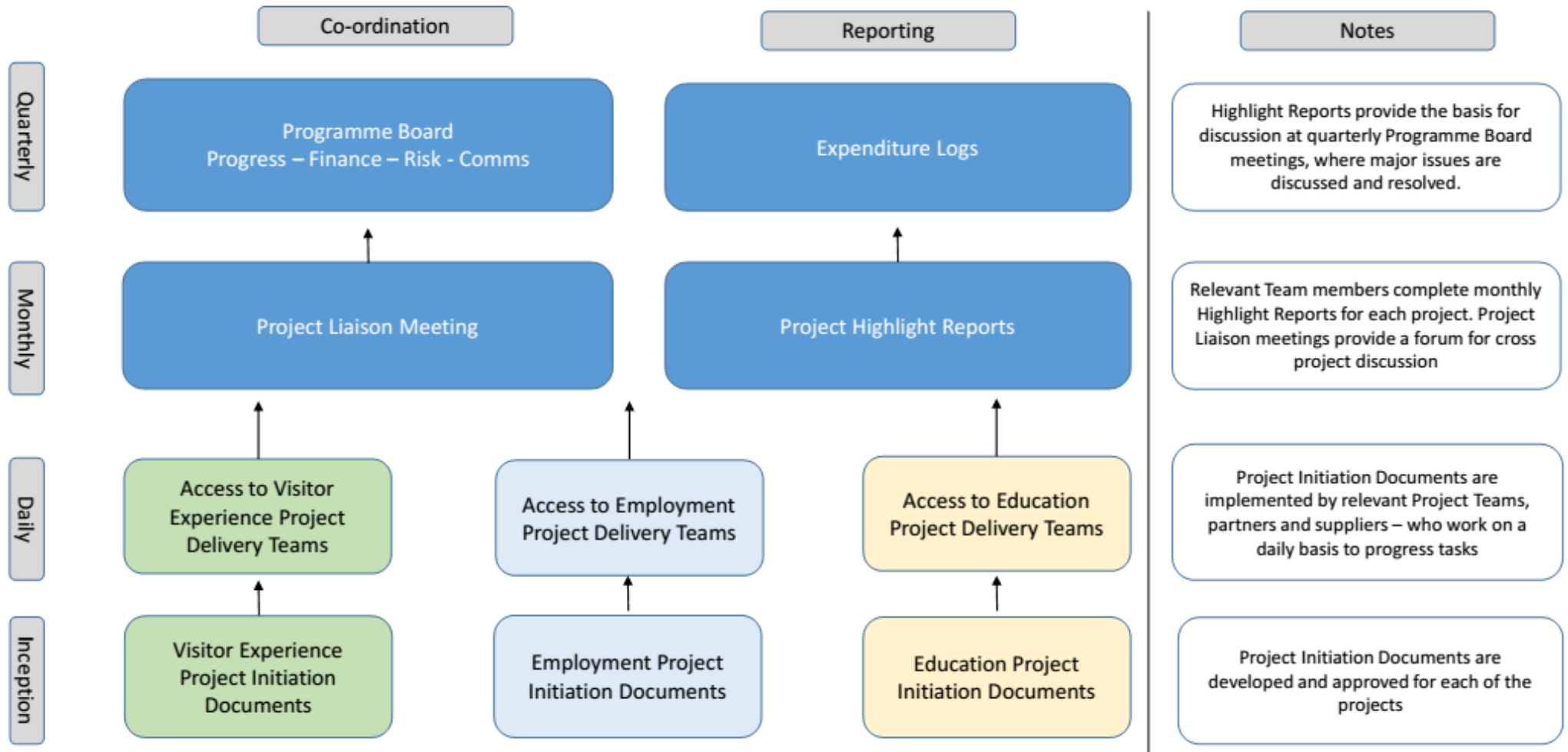
Isle of Wight Council Access Fund for Sustainable Travel: Project Plan

		16/17		17/18				18/19				19/20				20/21	Resources (FTE Days)	Delivery Lead	
		Q3	Q4	Q1	Q2	Q3	Q4	Q1	Q2	Q3	Q4	Q1	Q2	Q3	Q4	Q1			
Access to Visitor Experiences																			
1A	Tourism Business Engagement Programme																	666	Visit IoW
1B	Destination Walking and Cycling																	666	Visit IoW
Access to Employment, Training and Skills																			
2A	Sustainable Transport Broker Programme																	532	IW Council
2B	Workplace Engagement Programme																	865	Chamber
2C	Cycle Service Delivery																	133	IW Council
2D	SMART Cycling Corridor phases 2 and 3																	133	IW Council
2E	Apprenticeships and Traineeships																	133	IW Council/VIoW
Access to Education and Active Communities																			
3A	School and FE Engagement Programme																	1198	IW Council/Sustrans
3B	Isle be Active																	666	IW Council
Aiming for Excellence																			
4A	Programme Management and Comms																	666	IW Council
4B	Monitoring and Evaluation																	333	IW Council
4C	Transport Innovation Grant Fund																	112	IW Council

Planning, Design and Procurement	
Transition Year (STTY) Delivery	
Access Fund Delivery	
Monitoring and Evaluation	
Legacy	

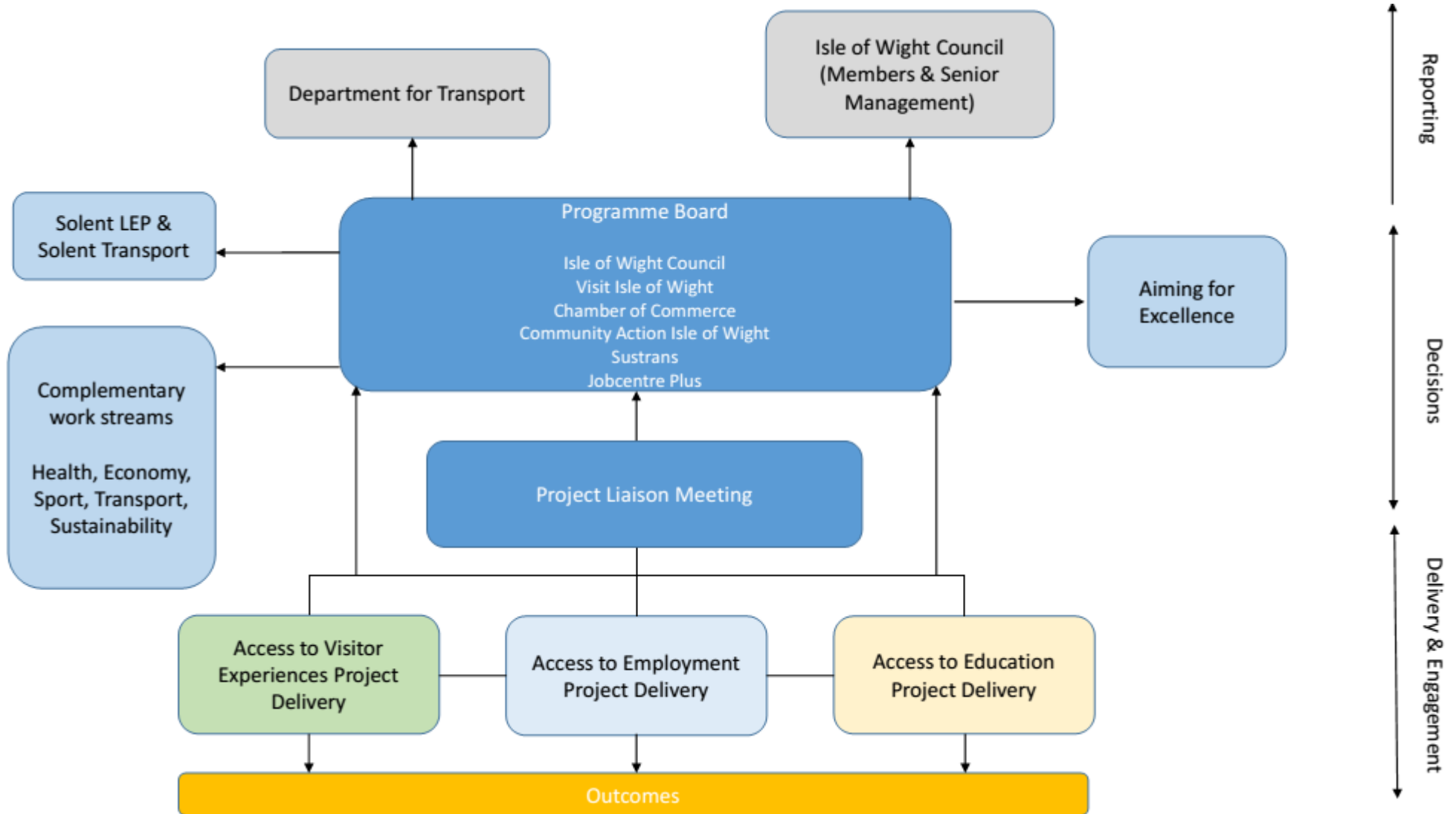
Annex C

Isle of Wight Council Access Fund for Sustainable Travel: Programme Management Processes



Annex D

Isle of Wight Council Access Fund for Sustainable Travel: Programme Governance



Annex E

Isle of Wight Council Access Fund for Sustainable Travel: Letters of Support



Solent LEP Office
Second Floor
1000 Lakeside
Western Road
Portsmouth
PO6 3EN

Wendy Perera
Head of Planning and Housing Services
Planning & Housing Services
Isle of Wight Council
Seaclose Offices
Fairlee Road
Newport
Isle of Wight, PO30 2QS

6th September 2016

Dear Wendy,

Re: Isle of Wight Council Application to Access Fund for Sustainable Travel

Thank you for sharing your draft application to the above Fund, with Solent LEP.

The Solent LEP is a partnership organisation between the business community, the Higher Education sector, three unitary authorities (including the Isle of Wight Council), eight district councils and one county council, all of whom are actively working together to secure a more prosperous and sustainable future for the Solent area. These make up a fully-elected Board of 15 directors.

LEPs have a strategic role as the lead bodies for economic development in their areas. Accordingly, the Solent LEP is the key interface and lead for economic development in the Solent, and has set out its evidence-based strategy to deliver transformational economic growth within the area in its Strategic Economic Plan (SEP), published in 2014.

In order for the Solent to reach its economic potential transformational change is required in a number of areas, and most notably in transport. Businesses consistently identify transport as a key challenge to their growth, securing investment and attracting the skills they need. The Solent suffers from an all-mode transport deficit, which is exacerbated by a complex geography, which includes 290 miles of coastline with three islands and two peninsulas, very high population density levels and a polycentric settlement distribution.

The Solent LEP welcomes the bid from the Isle of Wight Council and is supportive of its objectives to promote sustainable transport projects that seek to grow the Island economy by boosting levels of cycling and walking, and by improving access to jobs, skills, training and education.

Through the two Solent Growth Deals that the LEP has agreed with Government, to date, the LEP has emphasised the importance of transport connectivity in supporting economic growth and raising productivity levels within the Solent. Connectivity of the Island with the mainland Solent LEP area is of particular importance to the Island economy, and it is important to ensure that cross-Solent services are fully integrated within the wider transport offer.

The Island Infrastructure Task Force has been established following a request by Andrew Turner MP for a holistic consideration of Island transport. Solent LEP is supporting this work and commissioning an Island Transport Plan.

Within the Solent LEP's proposal to Local Growth Deal round 3, there is a request for £15m to support the creation of an Island Infrastructure Fund. This will provide targeted investment to help overcome the specific barriers to growth that impact the Island economy. The LEP will prioritise infrastructure schemes that have the potential to unlock new development sites for employment and housing.

The measures to support walking and cycling on the Island are welcomed and we wish you well with your application.

Yours sincerely,



Russell Kew
Business Board Director, Solent LEP

TOGETHER.STRONGER

Wendy Perera
Head of Place
Isle of Wight Council
High Street
Newport
PO30 1UD

8 September 2016

Dear Wendy

I am writing to offer the support of the Isle of Wight College for the Isle of Wight Council's submission to the Access Fund for Sustainable Travel.

The Isle of Wight College has a reputation for providing excellent teaching and learning and has been inspected by Ofsted and graded as 'outstanding'. With support from the Solent LEP, the Isle of Wight College is investing in a £12 million specialist centre for engineering, composites, advanced manufacturing and marine, offering specialised education and training for around 600 students. The new centre will create a highly skilled, world-class workforce and help to assure sustainable long term economic success for local people and the island as a whole.

Your Access Fund bid contains an ambitious range of interventions which will contribute to economic growth and increased levels of cycling and walking. Access to sustainable, affordable transport has been identified as a barrier for many of our students and apprentices therefore the support offered through the Sustainable Transport Broker Programme is welcomed. The short distance between our Newport site and the town centre offers a significant opportunity to increase levels of cycling and walking amongst staff and students; we welcome the proposal to introduce a shared e-bike scheme for local journeys.

Good luck with the bid, the Isle of Wight College looks forward to working with you on its implementation.

Yours sincerely



Roland White
Assistant Principal
Teaching, Learning and Students



31 August 2016

Dear Wendy,

I am writing to you on behalf of Sustrans to express our support for the Isle of Wight Council's bid to the Department for Transport's Access Fund from 2017/18, which we feel meets the key criteria for the fund.

The Isle of Wight Council aims to provide a package of sustainable transport initiatives which we strongly believe will:

- improve access to jobs, skills, training and education;
- seek to grow the economy by boosting levels of cycling and walking; and
- demonstrate an alignment to health, air quality and reduced vehicle emissions

The outlined proposal will provide the resources required to enable and promote the use of the sustainable transport options available to residents, commuters, students and visitors in the Isle of Wight.

We have a long and successful history of working in partnership with the Isle of Wight Council. Sustrans recognises that this work must continue if we are to maintain the momentum for active travel across the Isle of Wight.

We are fully supportive of the bid and assuming the bid is successful we look forward to working with you to implement the measures.

Yours Sincerely



James Cleeton
England Director, South
Sustrans

Island Healthcare

Wendy Perera
Head of Place
Isle of Wight Council
High Street
Newport
PO30 1UD

09 September 2016

Dear Wendy,

RE: DfT Access Fund for Sustainable Travel

Thank you for sharing a copy of the Isle of Wight Council submission to the Department for Transport Access Fund for Sustainable Travel. Island Healthcare fully support the proposals set out in the bid and recognise the important role which sustainable transport can play in transforming access to care services.

As you'll be aware, Island Healthcare has recently launched its Hub initiative, which is piloting cycling as the preferred mode for domiciliary care service delivery within a fixed radius of Westview House. The Hub is already realising health and wellbeing benefits for our staff, and creating cost and carbon savings for our business. The Access Fund will support an ambitious expansion of this service and believe we can create a scalable model which will generate wide interest.

Good luck with the bid; Island Healthcare looks forward to working with you during the implementation phase.

Yours sincerely,



Ian Bennett
Operations Director

Wendy Perera
Isle of Wight Council
Newport

8th September 2016

ADDRESS Visit Isle of Wight Ltd, The Guildhall,
High Street, Newport, Isle of Wight PO30 1TY

TELEPHONE (01983) 521555

CONSUMER WEBSITE visitisleofwight.co.uk

INDUSTRY RESOURCES visitwight.org

BID WEBSITE isleofwightbid.com

Dear Wendy

Access Fund for Sustainable Travel

Visit Isle of Wight Ltd is pleased to offer its support for Isle of Wight Councils application to the Access Fund for Sustainable Travel.

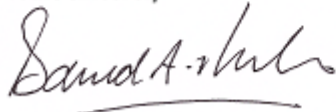
As you'll be aware, Visit Isle of Wight Ltd has worked closely with the Council on the implementation of projects arising from two rounds of LSTF funding since 2012, as well as the current Sustainable Travel Transition Year programme. This funding has made a significant difference to the way our visitors experience the Island, with data from our quarterly monitoring indicating that the proportion of private car journeys generated by visitors have reduced in recent years, while visitor trips via sustainable modes are increasing, particularly cycling and walking. Our e-Bike hire scheme – Red Squirrel Bikes – funded separately by the Department for Transport via CarPlus, is also contributing to levels of modal shift and providing a further opportunity for sustainable exploration on two wheels.

The establishment of the Isle of Wight Business Improvement District – WIGHT BID – offers numerous opportunities to further boost the Island's visitor economy over the next five years; we forecast an additional 220,000 visits over the three year Access Fund implementation period. Cycling and walking promotion will continue to play a key role in our off Island marketing, and we will maximise the unique opportunities that foot passenger ferry services play in supporting car-free Island exploration.

Subject to approval by our Board of Directors and the Wight BID levy marketing panel (who hold responsibilities for confirming the resources deployed within our marketing plan), Visit Isle of Wight Ltd will contribute £70,000 of match funding toward the implementation phase of the programme, as well as additional added value achieved through of the delivery of our core marketing activities.

We look forward to working with you on the implementation of the Access Fund programme.

Yours sincerely



David Thornton
CEO
Visit Isle of Wight LTD



www.cyclewight.org.uk

72 Clatterford Road
Newport
Isle of Wight
PO30 1NZ
01/09/2016
01983 520529

Wendy Perera
Head of Planning and Housing
Isle of Wight Council
Newport
Isle of Wight
PO30 2QS

Dear Wendy,

On behalf of CycleWight I am writing a letter of support of the submission of funding, "Access Fund for Sustainable Transport."

As a group we feel that the Island has benefited enormously from the recent sustainable transport funding awards. This bid allows the local community to build on the success that has already been achieved.

CycleWight has been an integral part of the previous projects and relishes the opportunity to continue to be a supporter and participant of these proposed developments.

Yours sincerely,

Tim Thorne

Chair

ISLE OF WIGHT CHAMBER OF COMMERCE
MILL COURT FURLONGS
NEWPORT ISLE OF WIGHT
PO30 2AA UNITED KINGDOM

T+44 (0) 1983 520777
F+44 (0) 1983 554555
chamber@iwchamber.co.uk
www.iwchamber.co.uk

Wendy Perera
Deputy Head of Planning Services (Policy)
Isle of Wight Council
Seaclose Offices
Fairlee Road, Newport
Isle of Wight
PO30 2QS

5th September 2016

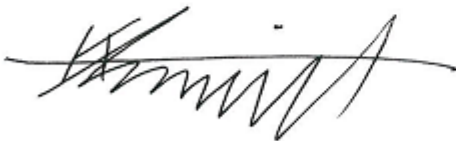
Dear Wendy

ISLE OF WIGHT COUNCIL – Application to the Access Fund for Sustainable Travel

The Isle of Wight Chamber of Commerce supports the Isle of Wight Council's bid for Local Sustainable Transport Funding to deliver an innovative transport programme to support sustainable economic prosperity and provide transport solutions for our residents and visitors.

The Isle of Wight Chamber is pleased to support and work in partnership with the IW Council in order to help build and develop the local economy and will provide an element of in-kind support, based on the participation of the business community in future activity, with businesses volunteering their time in support of the Chamber. This in-kind support would be to the value of £15,000 over the duration of the project.

Yours sincerely



Kevin Smith
Chief Executive



Department
for Work &
Pensions

Newport Jobcentre Plus
Broadlands House
Newport
Isle of Wight
PO30 2HX

www.gov.uk

Telephone: 01983273166

05 Sept 2016

Re IOW Councils Bid to the Access Fund

Dear Wendy

I am writing to set out the support in principle of Jobcentre Plus for the Isle of Wight Councils Access Fund bid.

As you'll be aware, we have been working with the Council on the Sustainable Transport Fund which will support our customers in to work. A recent transport survey of jobseekers showed clear results that issues around cost, accessibility and confidence to use sustainable transport are unique barriers to accessing employment opportunities. 4 in 5 of our customers could benefit from the new Sustainable Transport Broker Programme.

In partnership with the Council and third sector, Jobcentre Plus will support the project delivery, including:

- Up skilling work coaches to enable them to have a greater understanding of sustainable transport options on the Island, so that they are better placed to advise jobseekers on the various options available to them.
- Offering a base at our Newport offices for the Sustainable Transport Broker Project Team,.
- Considering your applications to our Flexible Support Fund to further reduce the cost of transport for jobseekers. (We would offer other potential bidders the same support).

Jobcentre Plus looks forward to working with Isle of Wight Council on delivery of this important project.

Yours sincerely

(signed via email)

Kerrie Honey
Business Development Manager, Isle of Wight, Portsmouth and Cosham

Wendy Perera
Head of Place
Isle of Wight Council
High Street
Newport
PO30 1UD

5th September 2016

Dear Wendy

Access Fund for Sustainable Travel

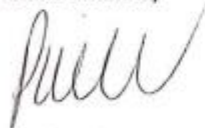
I am writing to confirm the support of Southern Vectis for Isle of Wight Councils application to the Access Fund for Sustainable Travel.

Southern Vectis provides the network of scheduled bus services on the Isle of Wight and is contracted by the Council to deliver home to school transport. We have a successful track record of working with the Council on the delivery of projects arising from the recent Local Sustainable Transport Fund and current Sustainable Travel Transition Year programmes.

We recognise the important role which buses provide in supporting access to employment, skills, training and education, and fully support the proposals within the Council's Access Fund for Sustainable Travel application. In particular we welcome to proposal to extend the reach of the Sustainable Transport Broker Programme to include apprentices as well as active jobseekers. Southern Vectis will continue its commitment to offering a 30% discount to jobseekers and apprentices attending interviews and training using scheduled bus services. Based on projected trip volumes, we estimate the cumulative value of this discount to be in the region of £26k over the three year programme.

We wish you well with the application, and look forward to working with you on its implementation.

Yours sincerely



Paul Walker
Strategic Development Manager



**Community
Action
Isle of Wight**
at the Riverside

Riverside, The Quay
Newport PO30 2QR
Tel: 01983 524058
Email: hello@actioniw.org.uk
www.communityactioniw.org.uk

Wendy Perera
Head of Place
Isle of Wight Council
High Street
Newport
PO30 1UD

7 September 2016

Dear Wendy,

IWC Access Fund Application

I am pleased to hear that IW Council is making an application to the Access Fund to build on the success of existing sustainable transport initiatives. It has been good to hear about your future plans of working with communities across the Island to improve our green infrastructure.

We are happy to supply a letter of support for inclusion in your submission the Department of Transport.

As you know Community Action is the local support body for the voluntary and community sector on the Island and also runs the Island's Volunteer Centre service and we'll be happy to work with you to further develop initiatives which will help to get the community engaged and adopting sustainable transport.

Yours sincerely

A handwritten signature in black ink, appearing to read 'M. Bulpitt'. The signature is written in a cursive style.

Michael Bulpitt
Chief Executive
Community Action Isle of Wight

The Island's Council for Voluntary Service

Registered Charity No. 1063737

Company Limited by Guarantee Registration No. 3340032

Directorate of Children's Services
Director Steve Crocker

Mrs W Perera
Head of Place
Isle of Wight Council
High Street
Newport
Isle of Wight
PO30 1UD

Contact
Island Futures
Floor 4
County Hall
Newport
Isle of Wight PO30 1UD

Tel: (01983) 823888
Web: www.iwight.com/islandfutures
Email: island.futures@iow.gov.uk
Facebook: www.facebook.com/IslandFutures

8 September 2016

Dear Wendy,

Department for Transport Access Fund 2017-2020 - Letter of support

Thank you for sharing the Isle of Wight Council application to the Access Fund for Sustainable Travel. I write in support of the bid on behalf of the 'Island Futures'.

Island Futures is the service responsible for Post 16 education, covering a broad range of strategic objectives and programmes including young peoples duty to participate in education (RPA, and strategic review and development of the island's learning offer. Working in partnership with island secondary schools, it provides impartial careers information, advice and guidance to support young peoples' transition to further education, employment and training, and provides qualified professionals to (re)engage young people who are not in education, employment, or training (NEET).

Many of our programmes support young people not engaging in mainstream education, the most vulnerable young people often with multiple barriers. It is clear that access to affordable public and sustainable transport is a major barrier to participation in education and training. Sustainable travel options, advice, and financial support are vital to support progression, particularly in relation to traineeships and apprenticeships, accessibility to training venues and employer placements.

Island Futures welcomes the proposed interventions set out in the bid, there is clear added value, and fully supports the expansion of the Sustainable Transport Broker Programme to include apprentices. We are committed to working with you to ensure that better quality sustainable transport solutions are delivered, that can provide access to employment, education and skills, support economic growth, and encourage more active travel within the bid area.

I confirm that Island Futures will work with you to deliver the key objectives of the Access Fund if the bid is successful, and can donate staff time, leaflets, marketing support and office space as required. I look forward to working with you to support the delivery of this project.

Yours sincerely,



Phillip Walker
Head of Service, Island Futures



ISLE OF WIGHT

7 September 2016

Dear Chris

Isle of Wight Council Application- IslebeActive Access Fund

I am writing in support of the local authority application to the DFT Access Fund.

The Isle of Wight Duke of Edinburgh forum currently supports the delivery of activities for young people across a number of licensed centres. Training and development opportunities for young people is one our key focus areas, along with increasing walking and cycling activities through the Charity's awards systems.

The Forum is fully supportive of the Access Fund application and objectives to be delivered over the next three years.

Yours sincerely

Carol Taverner
DofE Coordinator
Isle of Wight



Wendy Perera |

Head of Planning and Housing Services
Planning & Housing Services
Isle of Wight Council
Seaclose Offices
Fairlee Road
Newport
Isle of Wight
PO30 2QS

Directorate of Place

From

Name Lee Matthews
Title Recreation and Open Spaces Manager
County Hall, Newport
Isle of Wight PO30 1UD

Tel (01983) 821000 x 8735
Email lee.matthews@low.gov.uk
DX 56361 Newport (Isle of Wight)
Web iwight.com

2nd September 2016

Dear Wendy

Sport and Physical Activity Alliance support: Access Fund

On behalf of our local Sport and Physical Activity Alliance (SPAA) we fully support the Isle of Wight Council's bid for revenue funding to support the Access Fund. The proposal to deliver a programme that will inspire our residents to build active, sustainable modes of travel into everyday journeys fits perfectly with a number of strategic plans the group aligns itself too.

The SPAA is multi agency partnership that helps coordinate and deliver a number of projects in partnership across the Island. We will deliver through proven partnerships with the education, business and tourism sectors, delivering a series of shared outcomes and creating a legacy which is sustainable for the future.

We strongly support this innovative programme of education and school engagement, which will be both, be creative and ambitious. We will be looking to develop and expand our excellent partnerships with Island Schools, Area of Outstanding Natural Beauty and Town and Parish Council's to continue to drive forward the cultural shift around sustainable travel.

The Isle of Wight Council's proposals will improve and promote the health of inactive people from wards across the Isle of Wight, therefore reducing inequalities. The benefits of physical activity are well known and this programme will certainly benefit the health of Island residents.

Isle of Wight Council is pleased to support the Access Fund by offering the following in kind partnership funding across the three years of the programme:-

Year 1	Year 2	Year 3	Total
£25,000	£25,000	£25,000	£75,000

Yours sincerely

Lee Matthews
Recreation & Open Spaces Manager
Isle of Wight Council
(Chair of Isle of Wight SPAA Partnership)



[Sent by email]

Wendy Perera
Head of Place
Isle of Wight Council
High Street
Newport
PO30 1UD

Phil Marshall
Principal Transport Planner
Solent Transport

*Economy, Transport and Environment Department
The Castle
Winchester
Hampshire
SO23 8UD*

www.solent-transport.com

Enquiries to Phil Marshall
Direct Line 07551 152754
Date 8 September 2016

My reference
Your reference
E-mail philip.marshall@hants.gov.uk

Dear Wendy

Re: Access Fund Bid – Transforming Travel on the Isle of Wight: Realised and Normalised

Thank you for sharing a copy of Isle of Wight Council's draft application to the Department for Transport's Access Fund for Sustainable Travel.

Solent Transport offers its full support for the objectives of the programme and the package of interventions, which will significantly improve access to employment, skills, training and education on the Island.

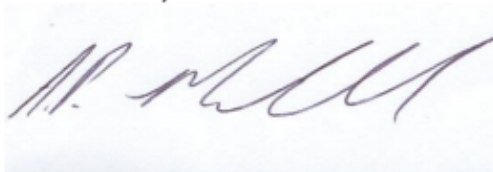
Solent Transport works strategically with businesses, key stakeholders and other agencies to deliver improved transport infrastructure, networks and systems crucial to keeping the region moving and supporting sustainable economic growth. As you'll be aware, Solent Transport is a member of the Island Infrastructure Task Force which is identifying a programme of targeted capital investment to help overcome the specific barriers to growth that impact the Island economy. To support the work of the Task Force, we note that Solent LEP's proposal to the Local Growth Deal round 3 includes a request for £15m to support the creation of an Island Infrastructure Fund. We note that your Access Fund proposals have been carefully designed to align with future transport capital schemes coming forward through the Infrastructure Task Force, and welcome this approach.

Outputs from Solent Transport's Sub Regional Transport Model shows that planned economic growth will significantly increase travel demand over the next 20 years. It is important that walking and cycling play increasingly important role to sustainably accommodate this growth, without significantly increasing traffic congestion and the adverse impacts associated with this, such as poor air quality. The need for the type of investment proposed in this bid was identified in the Transport Delivery Plan and builds on work delivered through the Local Sustainable Transport Fund.

Solent Transport welcomes the open dialogue between its four constituent authorities to determine the best approach to bid competitively for the Access Fund. Collectively the Solent Transport authorities are submitting a strong package of bids to Government, which shows a clear distinctiveness in bidding strategy. This acknowledges the variety and commonality of issues and challenges faced across the Solent to deliver economic growth and increasing physical activity through cycling and walking that supports specific local priorities.

Looking forwards, the Solent Transport partnership provides an opportunity for Isle of Wight Council and the other Solent Transport authorities to look at opportunities to collaborate on the delivery of Access Fund programmes and associated strategies, where we can demonstrate betterment and value for money.

Yours sincerely

A handwritten signature in dark ink, appearing to read 'P. Marshall', is written over a light blue rectangular background.

Phil Marshall
Principal Transport Planner
Solent Transport



PUBLIC HEALTH
Jubilee Stores
The Quay
Newport
Isle of Wight PO30 2EH
Telephone 01983 821000 ext 6512

Rida Elkheir
Director of Public Health
Email: Rida.Elkheir@iow.gov.uk

8th September 2016

Wendy Perera
Head of Place
Isle of Wight Council
High Street
Newport
Isle of Wight
PO30 1UD

Dear Wendy

I am writing to offer the support of Public Health to the Isle of Wight Council submission to the Department for Transport Access Fund for Sustainable Travel. The bid contains creative initiatives that will contribute towards economic growth, levels of cycling and walking and population health and wellbeing.

The second primary objective of the Access Fund, *'To actively promote increased levels of physical activity through walking and cycling'* aligns particularly well with Public Health priorities. The Access Fund explicitly contributes towards actualising three domains of PHE's (2014) Everybody Active, Everyday framework; Active Environments, Active Society and Moving Professionals. The proposals respond to the Joint Strategic Needs Assessment (JSNA) for the Isle of Wight, particularly needs relating to overcoming physical inactivity, improving child health and development, education and economy.

The interventions set out in the bid will compliment a full range of Public Health initiatives including:

- Commissioning a Workplace Health Improvement Programme designed to support lifestyle behaviour change for employees;
- Supporting the introduction of EduMove within Island Schools, to promote a physically active curriculum that has multiple proven benefits for children;
- Provision of physical activity advice and referrals provided by our team of Local Area Coordinators and Health Trainers;
- Delivering a comprehensive programme of health walks.

I would assign a minimum in kind contribution from Public Health of £100k across each of the three Access Fund implementation years.

Good luck with the bid and I look forward to working with you on its implementation.

Yours sincerely

A handwritten signature in black ink, appearing to read 'Rida Elkheir', written over a dotted horizontal line.

Rida Elkheir
Director of Public Health