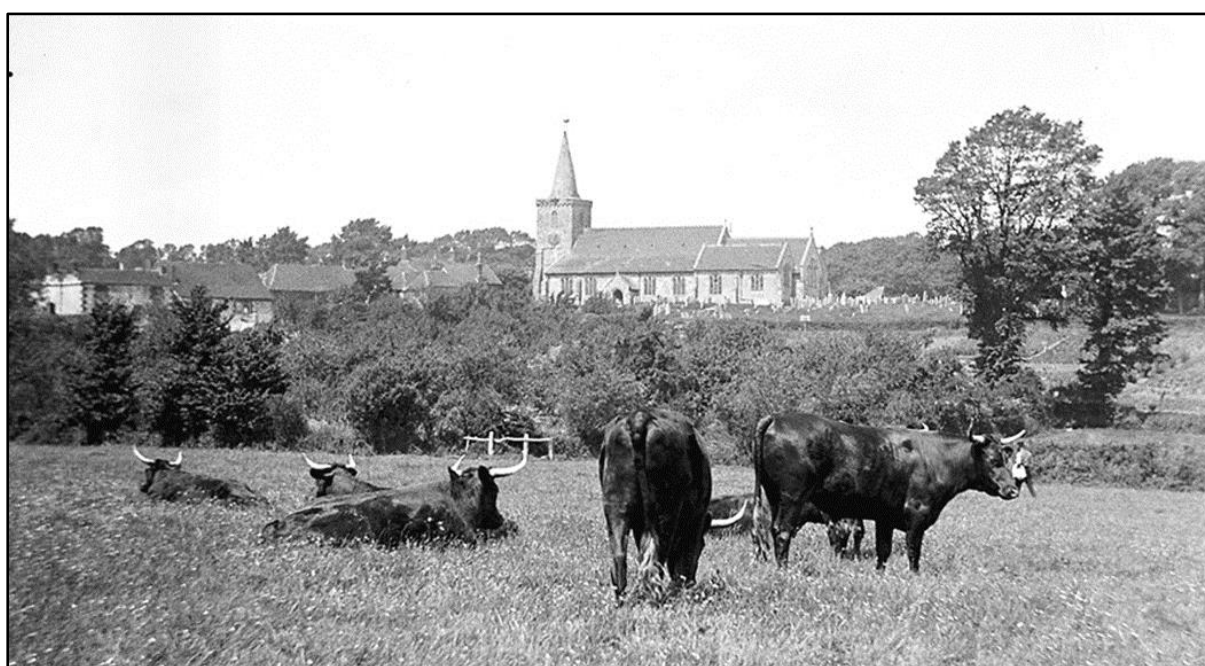


Farming



Ploughing. Cart horses pulling a plough at Yaverland.
Circa. 1890-1914

IWCMS.2010.61



Brading Church - Distant View. A view of Brading Church with a field of longhorn cattle in the foreground. Circa. 1890-1914

IWCMS.2012.333



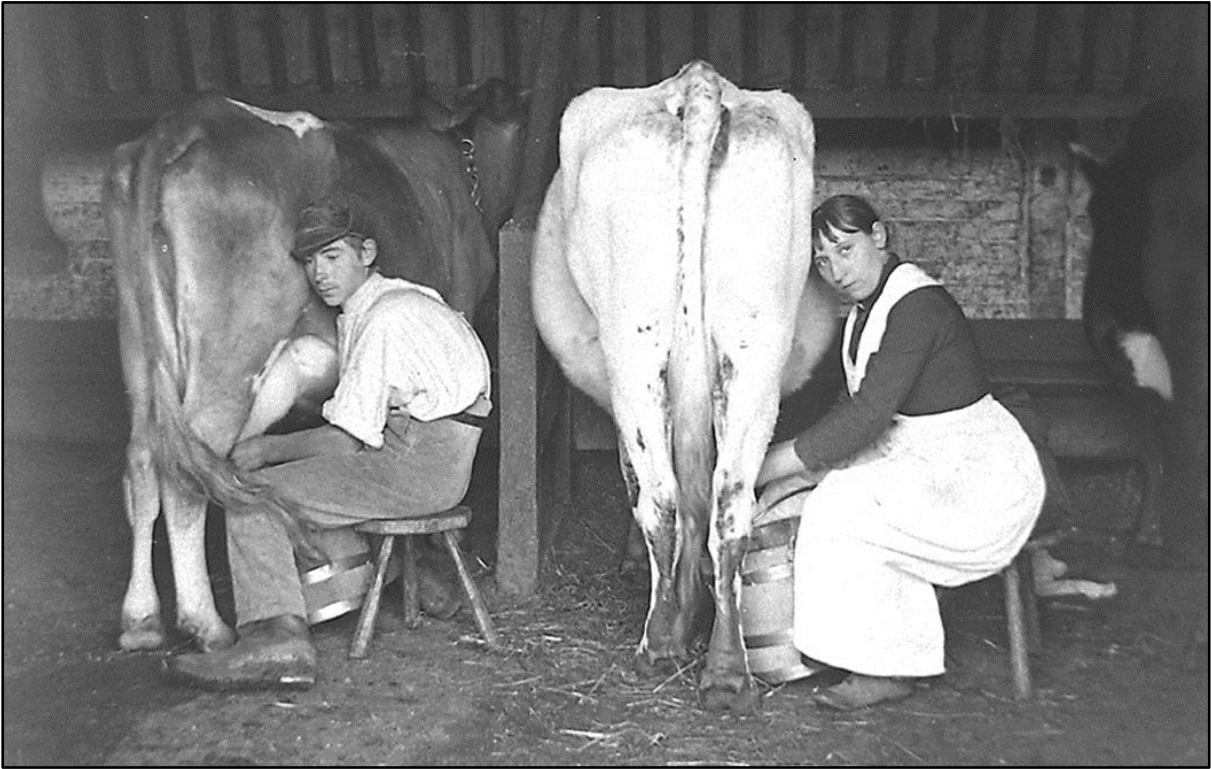
The Brook. Cattle and ducks in a pond. Circa. 1890-1914

IWCMS.2012.441



Jersey Cows. A herd of Jersey cows.

IWCMS.2012.514



***Milking Time.* Farm workers milking cows by hand.
Circa. 1890-1914**

IWCMS.1995.528



**A woman (possibly a servant) feeds assorted poultry in front of a
large house. Circa. 1890-1914**

IWCMS.2012.322



A horse drawn rake in front of Yaverland Manor, geese graze on the grass in the foreground. Circa. 1888-1914

IWCMS.1995.579



A horse drawn carriage in front of Yaverland Manor, pigs and geese graze on the grass in the foreground. Circa. 1890-1914

IWCMS.2012.292



Lambs and Shepherd. A Shepherd with his flock of sheep which appear to be grazing a cabbage field. Circa. 1890-1914

IWCMS.2012.454



A man appears to be dipping sheep in a river. Circa. 1890-1914

IWCMS.2012.279



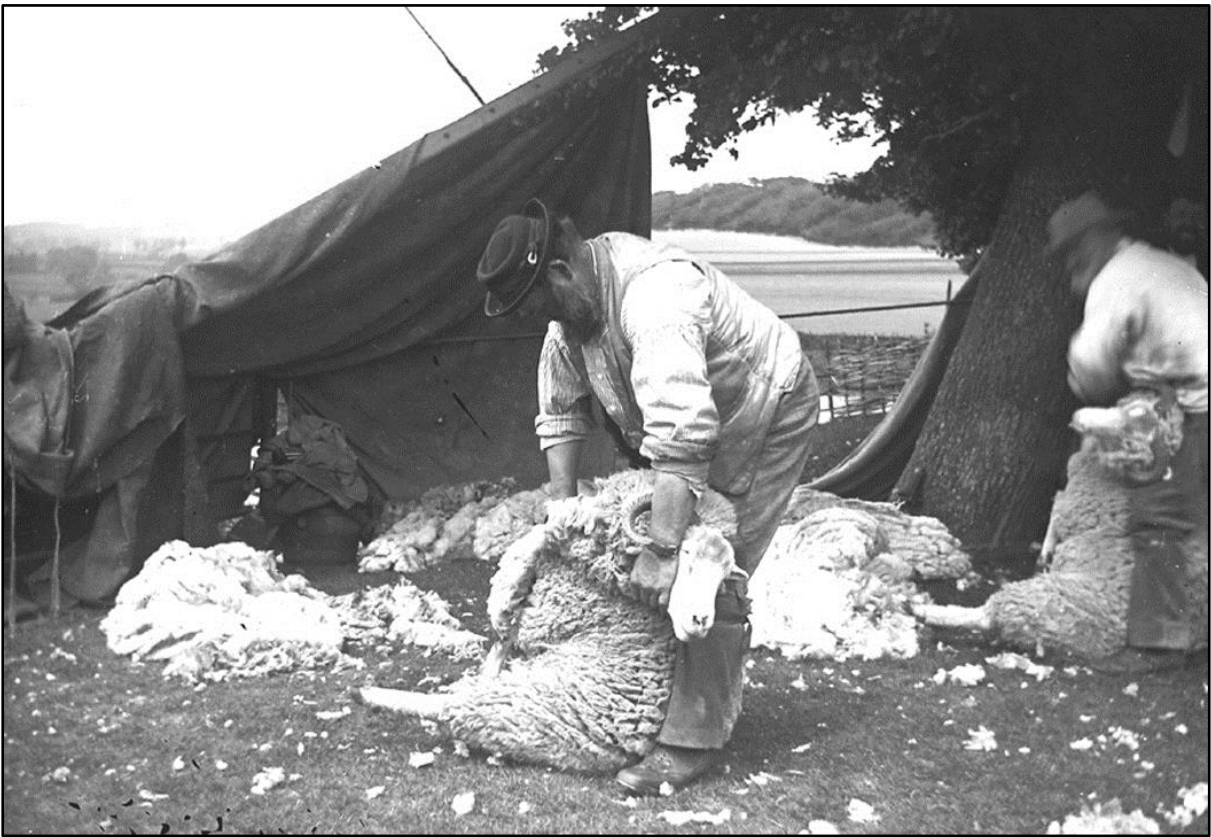
Sheep Washing. Four men are working to wash sheep in a river, probably at Alverstone. Circa. 1890-1914

IWCMS.2010.65



Sheepshearers on Interval. A group of sheepshearers taking a break in front of Yaverland Manor. Circa. 1890-1914

IWCMS.2012.452



**A Sheep Shearer. Two farm worker shearing sheep.
Circa. 1890-1914**

IWCMS.1995.518



**Market Day at St James' Square. Local farmers surveying livestock
at Newport Market. Circa. 1890-1914**

IWCMS.1996.52