

**Scotchells Brook is a tributary of the East Yar, the largest river on the Isle of Wight. It flows north from the pasture fields of St Martins and Shanklin Downs to the flat valley bottom where they meet at Alverstone.**

This 4.29 mile link to the Yar River Trail starts at Shanklin railway station and dips in and out of the course of the brook and its tributaries to join the Trail near Alverstone. It can also be used to create a 7.8 mile circular walk returning to Shanklin.



Exiting Shanklin railway station right (1) descend the steps and cross to the footpath alongside the holiday park road. Continue for  $\frac{3}{4}$  mile until soon after the second bridge and turn right onto an access drive to the main road. Cross and descend into America Woods (NC37a) where you will shortly see Scotchells Brook for the first time. Follow the bridleway until it turns sharp right towards a stone cottage. At the cottage turn left



(NC37a) and follow path over a bridge to a gate exiting the woodland.

On your left see Scotchells Brook flowing through the meadow. Continue to pass a pond in front of Ninham Farm (2).

Bear left between two ponds and immediately right at a fingerpost SS20 onto a path through meadows alongside Scotchells Brook to the main road. Cross and turn left taking the airfield access road right. Take NC23 at the holiday park (3) and continue alongside Borthwood Copse until you meet Alverstone Road. Turn right onto the road and walk on the right-hand side taking care of oncoming traffic for about  $\frac{1}{2}$  mile and turn into Burnt House Lane (NC44). Follow Burnt House Lane for a further  $\frac{1}{2}$  mile before coming to the entrance to Alverstone Bird Hide on your left (4). Alverstone Hide is one of the best places to see red squirrels on the Isle of Wight. It is also excellent for woodland and water birds, overlooking Alverstone Mead. These meadows with their old ditch drainage systems are hunted by barn owls, kingfishers and herons, with other wintering wildfowl, eg snipe and teal.

As the track curves sharply to the right (5) a footpath on your left passes through 3 kissing gates to join the Yar River Trail which you can

follow right to reach Sandown railway station. Alternatively, for a circular route continue along the track and through a gate, crossing Scotchells Brook.

You may wish to take a short detour and explore pretty Benstead's Marsh along a series of boardwalks through a gate on the right (6). These take you along the fringes of Scotchells Brook. Return back to the trail.

Continue along the track until it meets a road. You might wish to visit the community orchard on your left (7). Here you will find picnic tables and a boardwalk taking you over a series of ponds and watercourses that feed into the Eastern Yar. This was the garden area of the old water-work's cottages, now long gone, but you are welcome to pick the fruit including the Alverstone Apple. Return to the trail.

Turn right along the road and then right through the Golf Club entrance (SS46). Follow this long bridleway/track through the golf course, then pass through trees and bushes to Lake Common (8). Properties soon appear on the left. In a short distance look to the right for a path through the thicket. Turn right and then almost immediately fork left and exit onto the golf course by a fingerpost (SS30). Cross the fairway to a waymark post in the trees ahead and then to a post with a white board.





Sandown Airport



Scotchells Brook at Ninham

Follow the path down through the trees, across the bridge and straight across the meadow. Cross the footbridge over a tributary of Scotchells Brook, through a small copse and into a meadow with airport buildings in the distance. Follow the left edge of the meadow on a distinct path. Shortly before reaching a gate a path crosses by a waymark post. Turn left (9). Follow the path over a stile, through a marshy area and then a bridge over Scotchells Brook. Take the stony path with bushes on the left. This leads to the main road (10).

Turn right along the main road, cross on a crossing. Continue right, past another roundabout, to reach a wide track (SS18 The Old Highway) on the left (11). Follow the track. Cross a tributary of Scotchells Brook, ignore a cross track and go through a gate into the Lower Hyde Holiday complex (12). Pass a car park below on the left and then fork left (SS18) between the chalets. Bear left across a water-course (your final view of the Brook!) into a bridleway leaving the site.

This path emerges onto the road by Lidl supermarket. Cross on the pedestrian crossing to find the steps up to the railway station.

Scotchells Brook Trail is one of three beautiful walks through the largest river catchment on the Isle of Wight. It starts at Shanklin Station and can be a one way walk to the Yar River Trail (4.29 miles) and Sandown, or return along an alternative route to form a circular walk (7.8 miles).

More information about the trail and maps can be found at [islandrivers.org.uk/yar](http://islandrivers.org.uk/yar)



# Scotchells Brook Trail

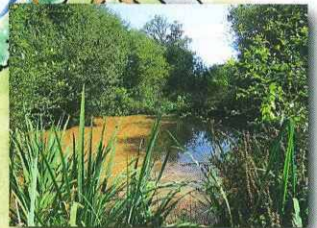
# Scotchells Brook Trail



Alverstone Mead



Community Orchard



Red Squirrel



Sandown Airport

Keep a look out for...



Banded Damoiselle



Ninham Farm Water Meadow

